

Company: **Esso Australia Pty Ltd**

Well: **WEST KINGFISH W8B**

Field: **WEST KINGFISH**

Rig: **Nabors Rig 175**

Country: **Australia**

Junk Basket with 6" Gauge Ring

MaxR Setting Record

18-Jan-2010

Nabors Rig 175

WEST KINGFISH

Bass Strait

WEST KINGFISH W8B

Esso Australia Pty Ltd

LOCATION

Bass Strait

Gippsland

Permanent Datum:

M.S.L.

Log Measured From:

D.F.

Drilling Measured From:

D.F.

Elev.:

K.B.

G.L.

D.F.

41.70 m

-77.00 m

41.73 m

State:

Victoria

Max. Well Deviation

67.08 deg

Longitude

148 06 19.93 E.

Latitude

038 35 34.84 S.

PVT DATA			
Oil Density	Run 1	Run 2	Run 3
Water Salinity			
Gas Gravity			
Bo			
Bw			
1/Bq			
Bubble Point Pressure			
Bubble Point Temperature			
Solution GOR			
Maximum Deviation	67.08 deg		
CEMENTING DATA			
Primary/Squeeze	Primary		
Casing String No			
Lead Cement Type			
Volume			
Density			
Water Loss			
Additives			
Tail Cement Type			
Volume			
Density			
Water Loss			
Additives			
Expected Cement Top			

Logging Date

18-Jan-2010

Run Number

1 - 3

Depth Driller

3657 m

Schlumberger Depth

3624 m

Bottom Log Interval

3621 m

Top Log Interval

3471.2 m

Casing Fluid Type

Brine

Salinity

Density

8.55 g/cm3

Fluid Level

0 m

BIT/CASING/TUBING STRING

Bit Size

8.500 in

From

732 m

To

3657 m

Casing/Tubing Size

7.000 in

Weight

26 lbm/ft

Grade

L-80

From

20.3 m

To

3657 m

Maximum Recorded Temperatures

Logger On Bottom

18-Jan-2010

Time

4:19

Unit Number

3829

Location

AUSL

Recorded By

O. Darby & M.Pratt

Witnessed By

Dan D & Andrew C

Logging Date			
Run Number			
Depth Driller			
Schlumberger Depth			
Bottom Log Interval			
Top Log Interval			
Casing Fluid Type			
Salinity			
Density			
Fluid Level			
BIT/CASING/TUBING STRING			
Bit Size			
From			
To			
Casing/Tubing Size			
Weight			
Grade			
From			
To			
Maximum Recorded Temperatures			
Logger On Bottom			
Unit Number			
Recorded By			
Witnessed By			

DEPTH SUMMARY LISTING

Date Created: 21-JAN-2010 23:44:46

Depth System Equipment

Depth Measuring Device		Tension Device		Logging Cable	
Type:	IDW-H	Type:	CMTD-B/A	Type:	7-46ZV XS
Serial Number:	796	Serial Number:	2268	Serial Number:	708145
Calibration Date:	26-Sep-2009	Calibration Date:	6-Jan-2010	Length:	6650 M
Calibrator Serial Number:	30	Calibrator Serial Number:	1173	Conveyance Method: Wireline Rig Type: Offshore Fixed	
Calibration Cable Type:	7-46V XS	Number of Calibration Points:	10		
Wheel Correction 1:	-4	Calibration RMS:	22		
Wheel Correction 2:	-1	Calibration Peak Error:	41		

Depth Control Parameters

Log Sequence:	Subsequent Log In the Well
Reference Log Name:	SLB LWD log
Reference Log Run Number:	
Reference Log Date:	17-Jan-2010

Depth Control Remarks

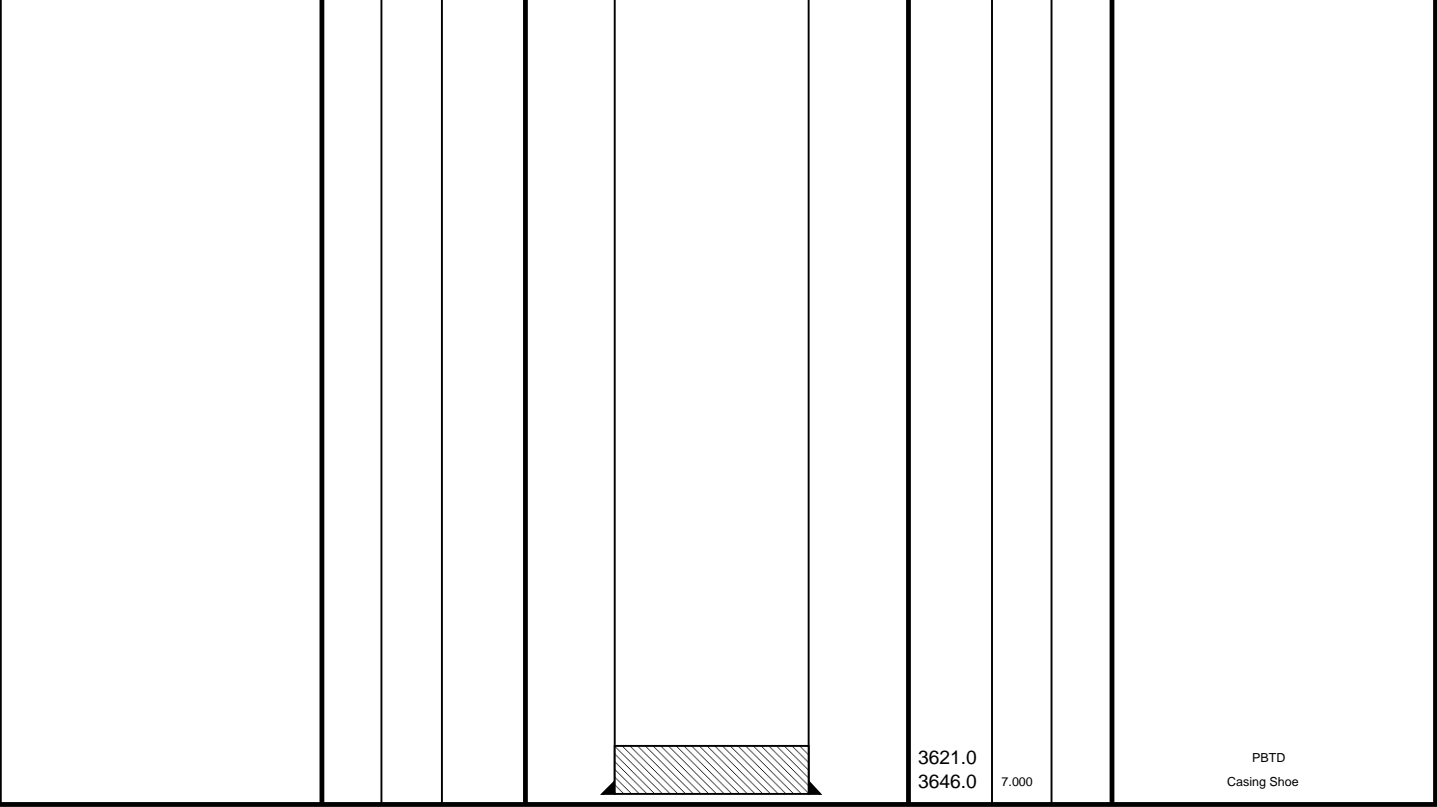
1. IDW used as primary depth control
2. Z-chart used as secondary depth control
3. All depths are MDKB
4. Correlated to LWD log provided by client
- 5.
- 6.

DISCLAIMER

THE USE OF AND RELIANCE UPON THIS RECORDED-DATA BY THE HEREIN NAMED COMPANY (AND ANY OF ITS AFFILIATES, PARTNERS, REPRESENTATIVES, AGENTS, CONSULTANTS AND EMPLOYEES) IS SUBJECT TO THE TERMS AND CONDITIONS AGREED UPON BETWEEN SCHLUMBERGER AND THE COMPANY, INCLUDING: (a) RESTRICTIONS ON USE OF THE RECORDED-DATA; (b) DISCLAIMERS AND WAIVERS OF WARRANTIES AND REPRESENTATIONS REGARDING COMPANY'S USE OF AND RELIANCE UPON THE RECORDED-DATA; AND (c) CUSTOMER'S FULL AND SOLE RESPONSIBILITY FOR ANY INFERENCE DRAWN OR DECISION MADE IN CONNECTION WITH THE USE OF THIS RECORDED-DATA.

OTHER SERVICES1	OTHER SERVICES2
OS1: None	OS1:
OS2:	OS2:
OS3:	OS3:
OS4:	OS4:
OS5:	OS5:
REMARKS: RUN NUMBER 1	REMARKS: RUN NUMBER 2
Log correlated to LWD log provided by client	
Objective # 1:	
RIH with junk basket / 6" Gauge ring to HUD, ensure access for MaxR	
Objective # 2 :	
Make up toolstring incorporating GR/CCL with MaxR assembly, RIH, correlate on depth using LWD log provided by client, set MaxR with gun over required	

RUN 1		RUN 2	
SURFACE EQUIPMENT		SURFACE EQUIPMENT	
DOWNHOLE EQUIPMENT		DOWNHOLE EQUIPMENT	
PEH-A 11 PEH-A 11	4.49	PEH-A 11 PEH-A 11	17.65
AH-64 6404 AH-64 6404	3.95	AH-64 6404 AH-64 6404	17.11
PGGT-D PGGC 156 PGGH-D 156	3.54	PGGT-D PGGC 156 PGGH-D 156	16.70
Gamma Ray	1.07	Gamma Ray	1.07
Casing Co Tension	TOOL ZERO	Casing Co Tension	TOOL ZERO
		AH-283 3-3/8" 6001 AH-CPST-AA AH-CPST-AA	14.92 14.76
		AH-7" MaxR assembly AH-7" MaxR assembly	11.85



Schlumberger

MaxR with 4–1/2" HSD Gun
Setting Pass

MAXIS Field Log

Company: Esso Australia Pty Ltd Well: WKF W8B

Output DLIS Files

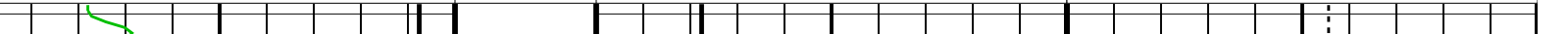
DEFAULT PERFO_049LUP FN:48 PRODUCER 21–Jan–2010 14:18 3546.0 M 3481.6 M

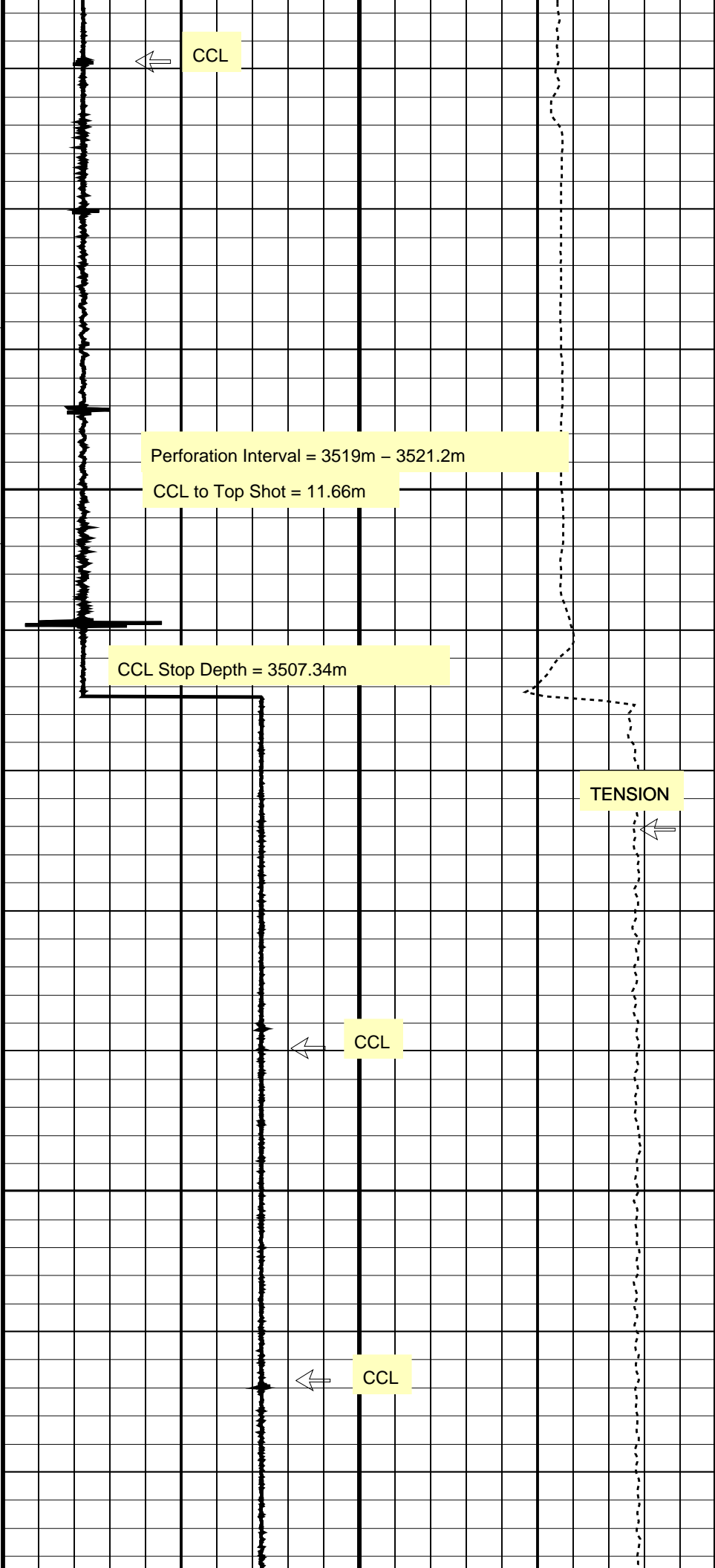
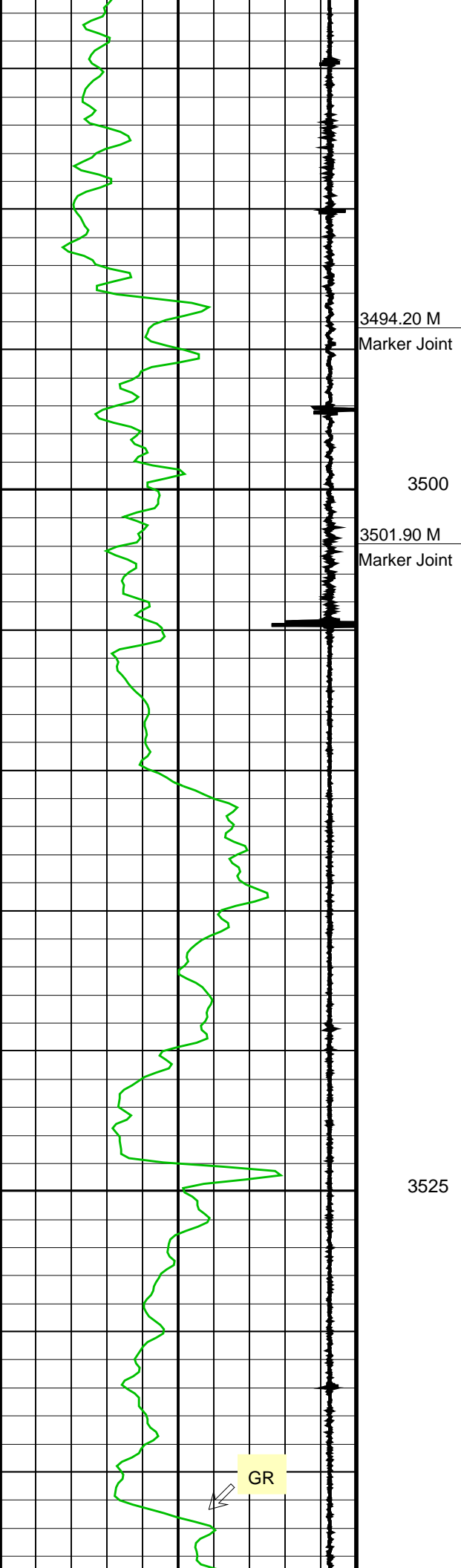
OP System Version: 17C0–154

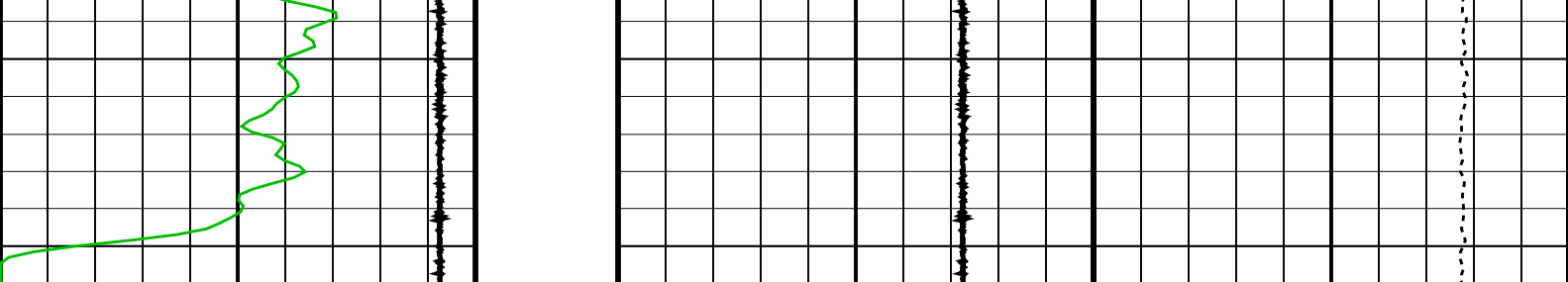
SHM_GUN 17C0–154 PGGT–D 17C0–154

Casing Collar Locator (CCL)			Shifted Casing Collar Locator (SCCL)			Tension (TENS)		
–19	(----	1	–10	(----	10	0	(LBF)	6000

Gamma Ray (GR) (GAPI) 150







Gamma Ray (GR)			Shifted Casing Collar Locator (SCCL)			Tension (TENS)		
0	(GAPI)	150	-10	(----	10	0	(LBF)	6000
Casing Collar Locator (CCL)								
-19	(----	1						


Format: CORRELATION Vertical Scale: 1:200 Graphics File Created: 21-Jan-2010 14:18

OP System Version: 17C0-154

SHM_GUN 17C0-154 PGGT-D 17C0-154

Output DLIS Files

DEFAULT PERFO_049LUP FN:48 PRODUCER 21-Jan-2010 14:18



MaxR with 4-1/2" HSD Gun
Correlation Pass

MAXIS Field Log

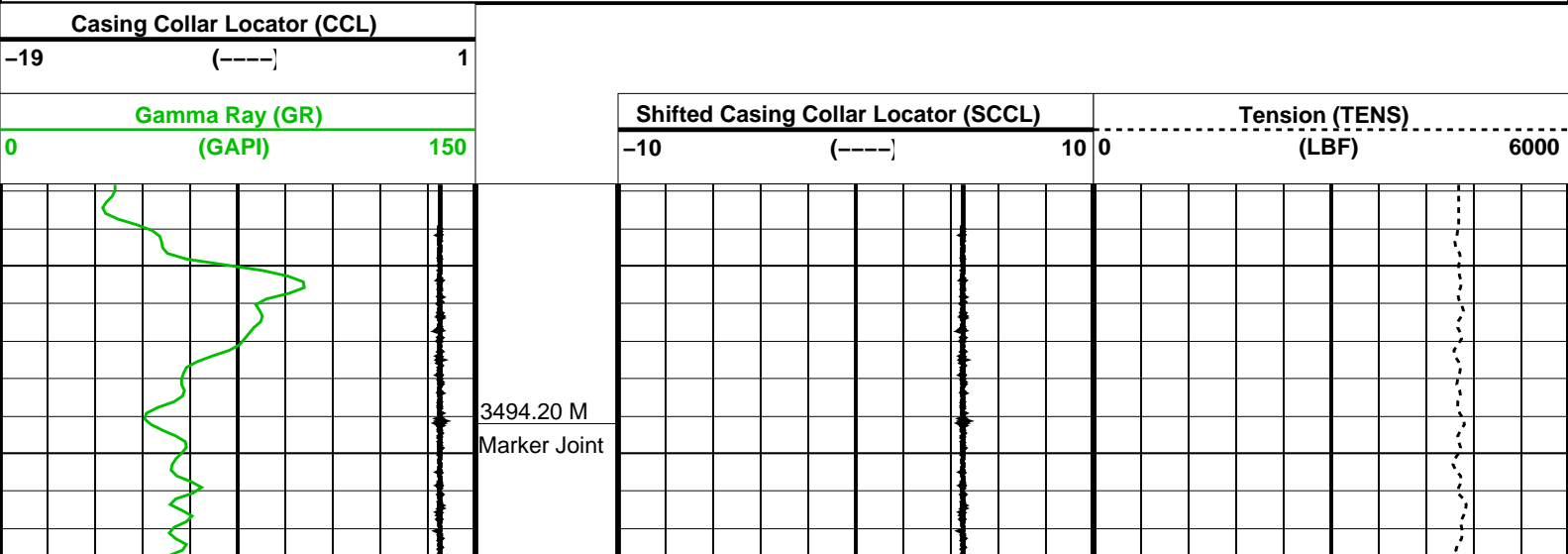
Company: Esso Australia Pty Ltd Well: WKF W8B

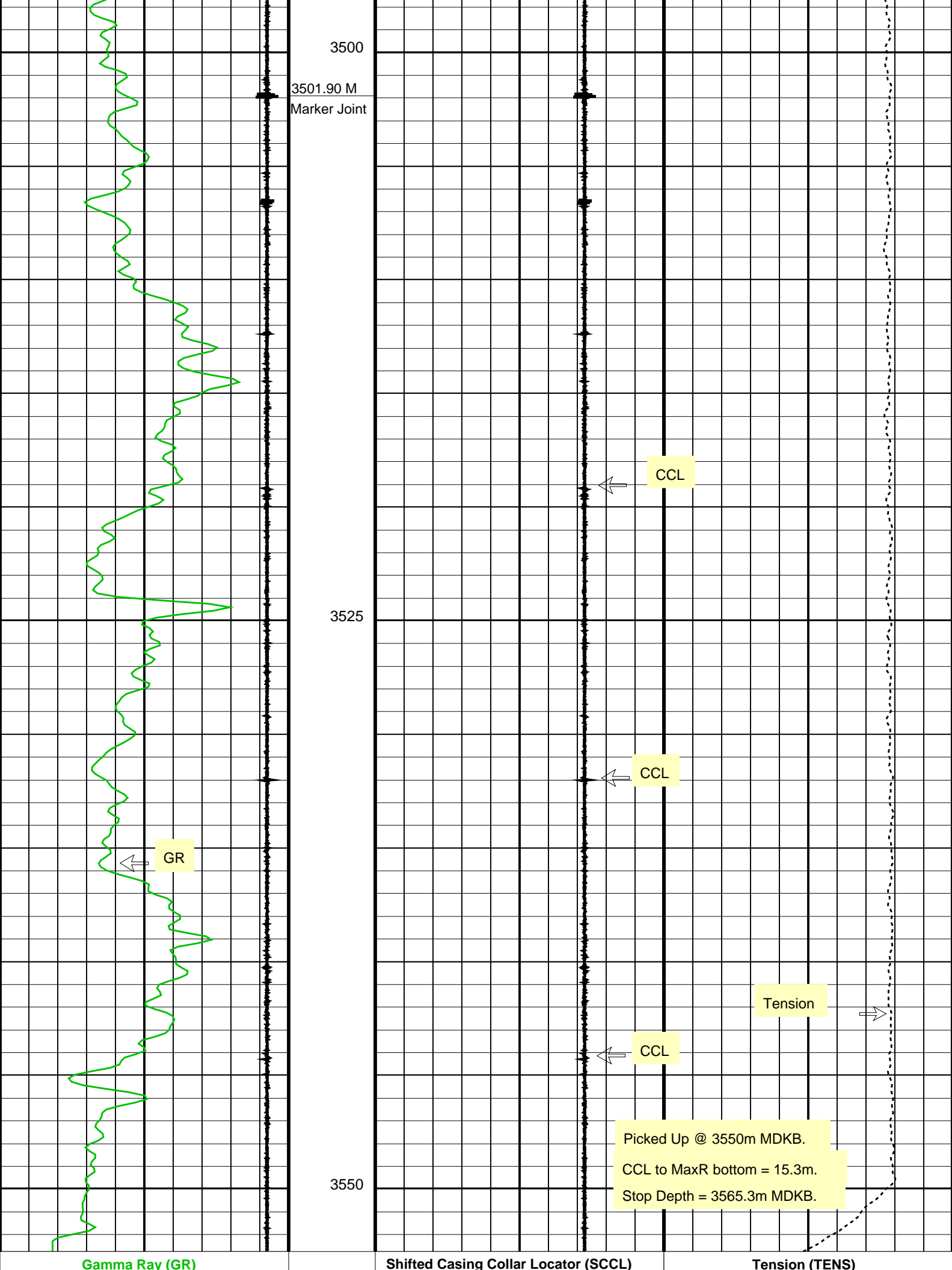
Output DLIS Files

DEFAULT PERFO_047LUP FN:46 PRODUCER 21-Jan-2010 14:02 3552.7 M 3487.7 M


OP System Version: 17C0-154

SHM_GUN 17C0-154 PGGT-D 17C0-154





0	(GAPI)	150	-10	(----]	10	0	(LBF)	6000
Casing Collar Locator (CCL)								
-19	(----]	1						
Format: CORRELATION Vertical Scale: 1:200 Graphics File Created: 21-Jan-2010 14:02								
OP System Version: 17C0-154								
SHM_GUN	17C0-154		PGGT-D		17C0-154			
Output DLIS Files								
DEFAULT	PERFO_047LUP		FN:46	PRODUCER	21-Jan-2010 14:02			

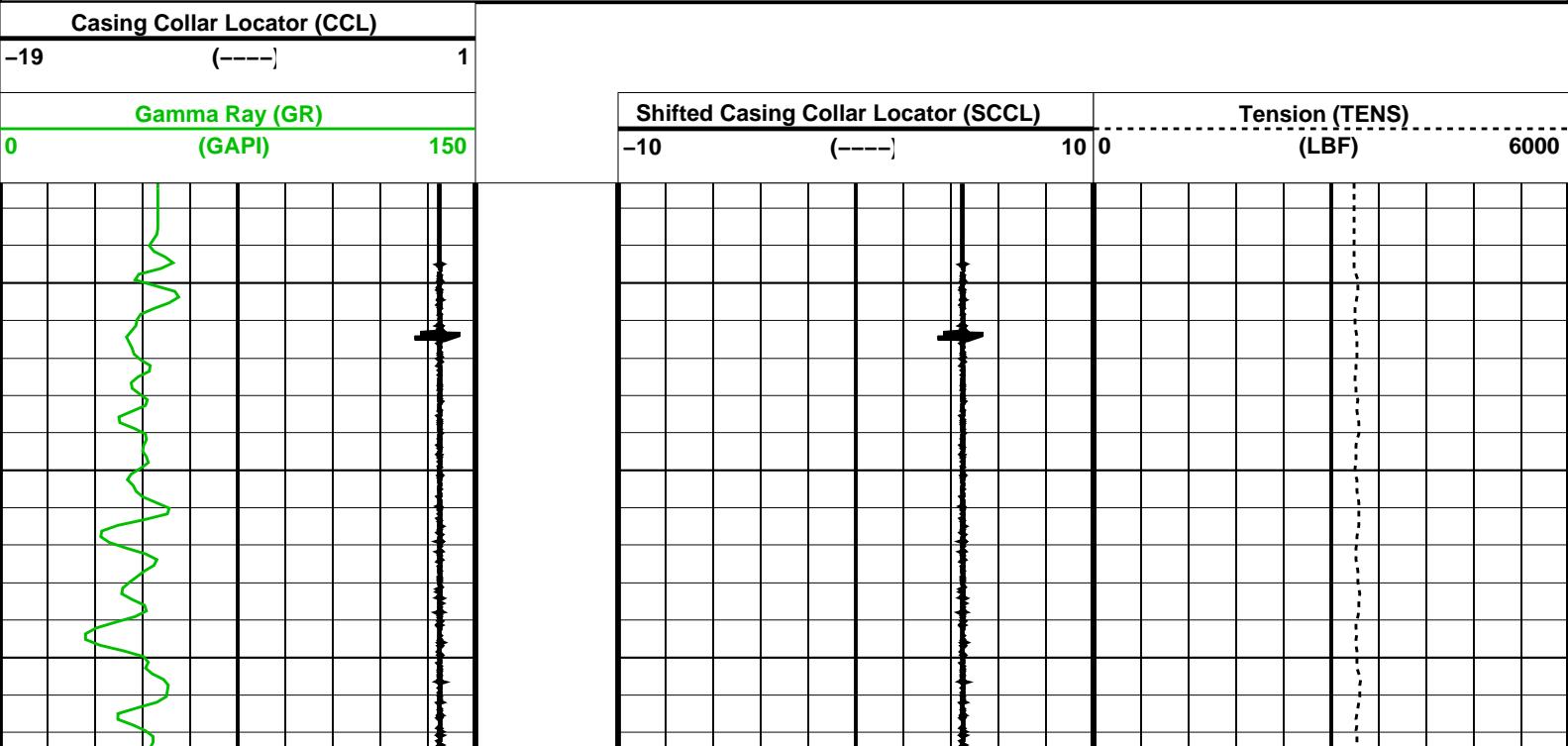


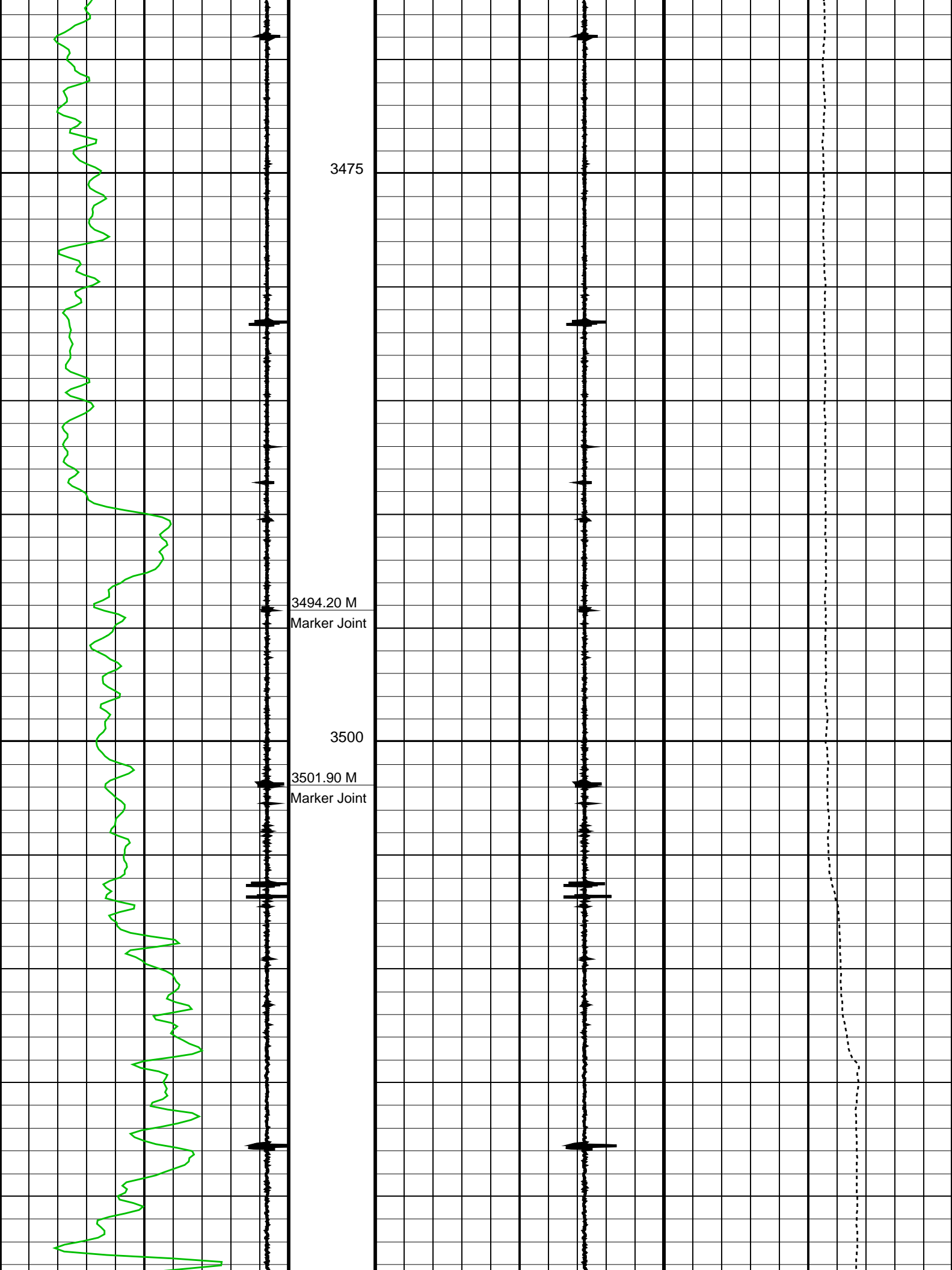
Junk Basket with 6" Gauge Ring
Depth Determination Pass 2

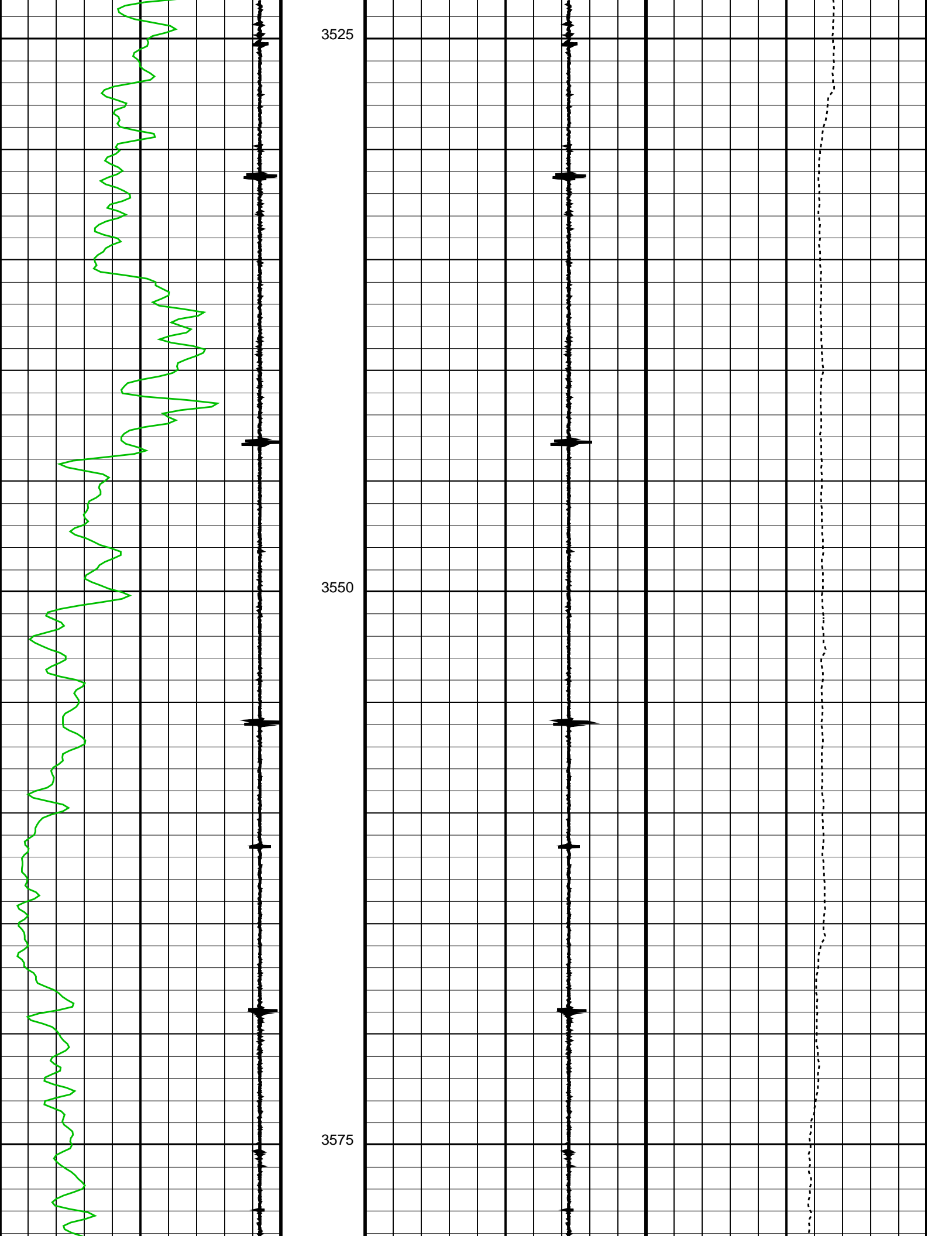
MAXIS Field Log

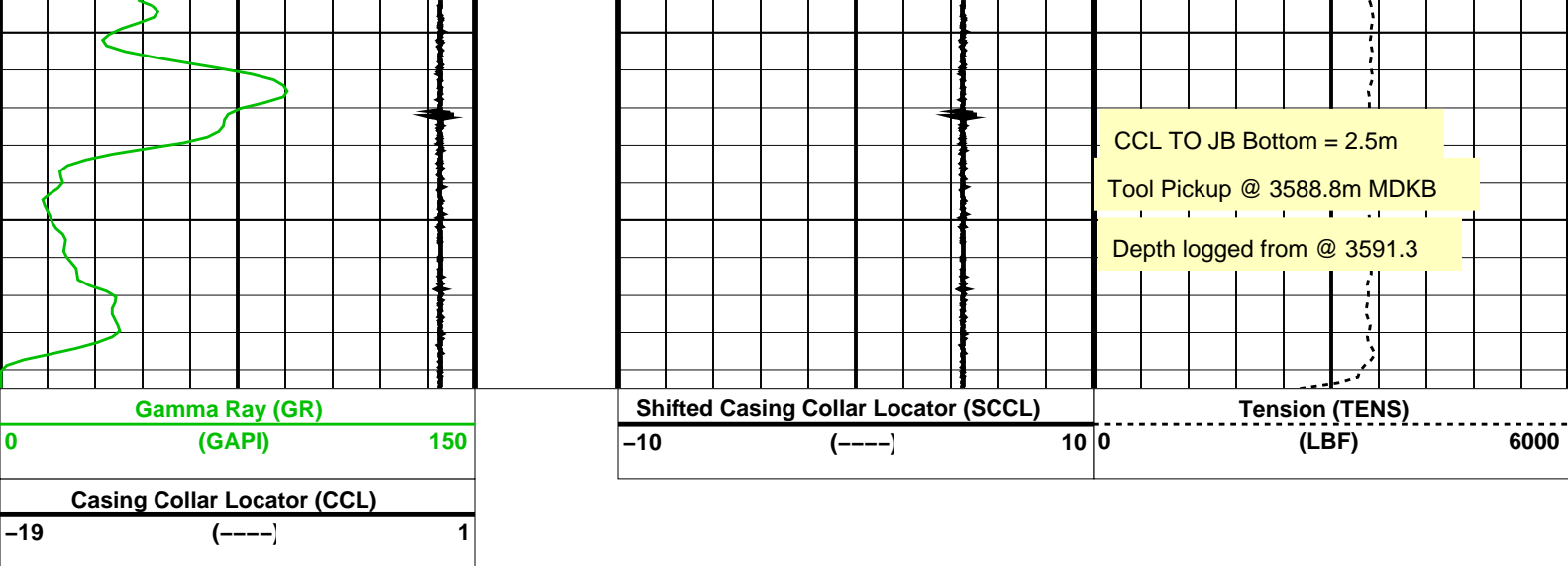
Company: Esso Australia Pty Ltd						Well: WKF W8B	
Input DLIS Files							
DEFAULT	PERFO_034LUP	FN:33	PRODUCER	21-Jan-2010 09:32	3591.5 M	3455.4 M	
Output DLIS Files							
DEFAULT	PERFO_035PUP	FN:34	PRODUCER	21-Jan-2010 09:43	3589.5 M	3452.2 M	

OP System Version: 17C0-154								
SHM_GUN	17C0-154		PGGT-D		17C0-154			










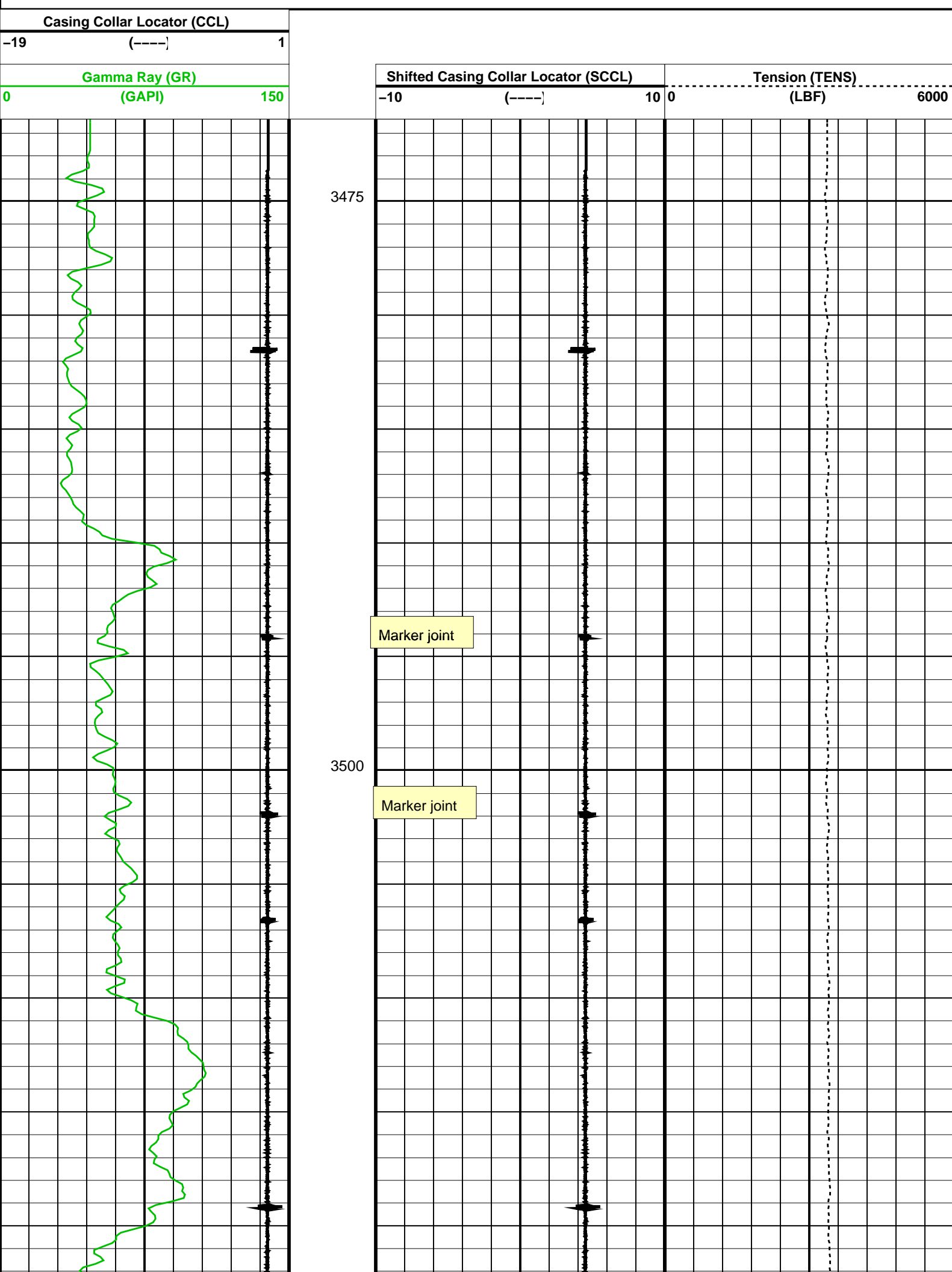
Parameters						
DLIS Name		Description			Value	
System and Miscellaneous						
DO		Depth Offset for Playback			-2.0	M
PP		Playback Processing			NORMAL	
Format: CORRELATION		Vertical Scale: 1:200			Graphics File Created: 21-Jan-2010 09:43	
OP System Version: 17C0-154						
SHM_GUN	17C0-154	PGGT-D		17C0-154		
Input DLIS Files						
DEFAULT	PERFO_034LUP	FN:33	PRODUCER	21-Jan-2010 09:32	3591.5 M	3455.4 M
Output DLIS Files						
DEFAULT	PERFO_035PUP	FN:34	PRODUCER	21-Jan-2010 09:43		

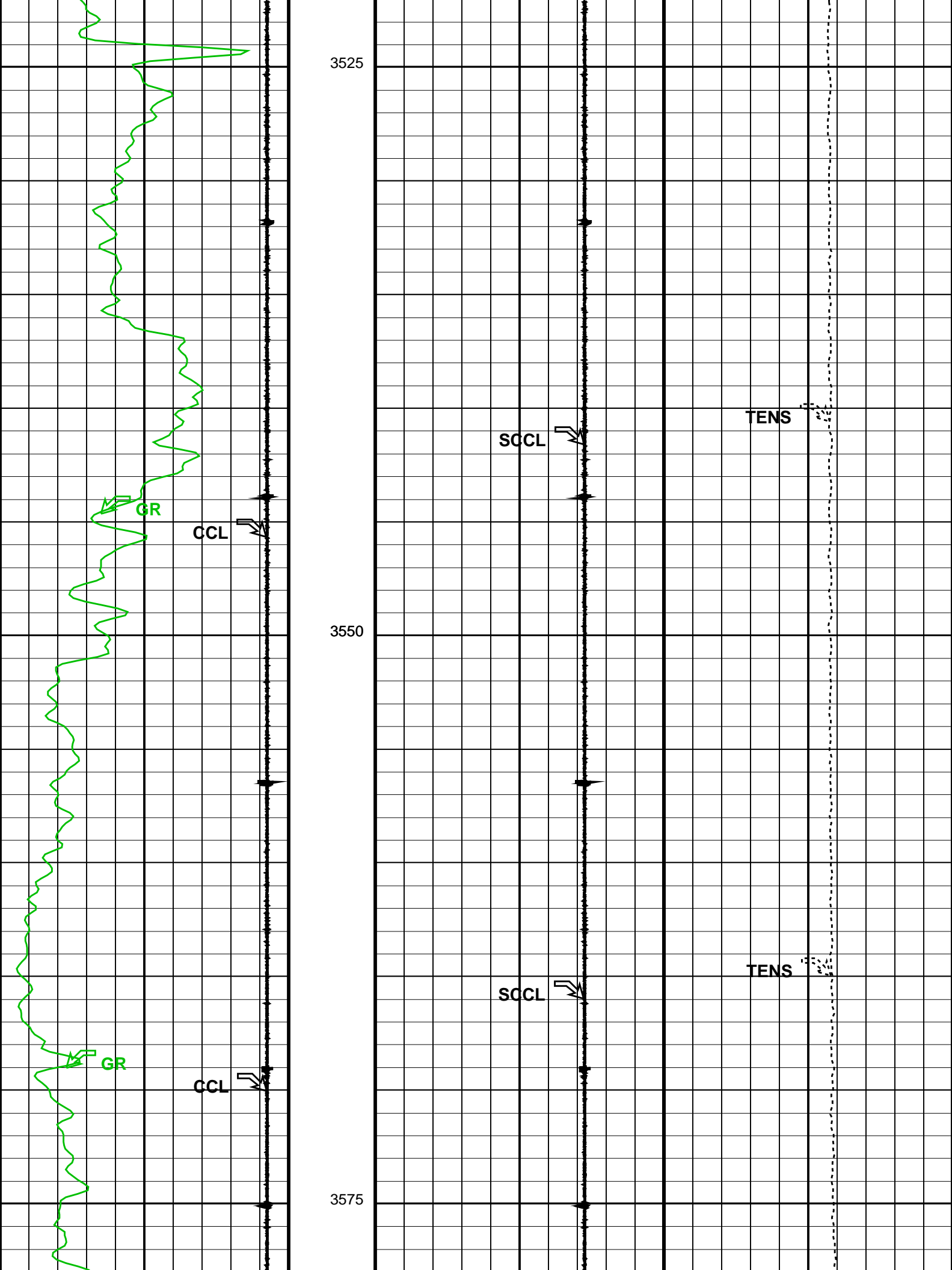


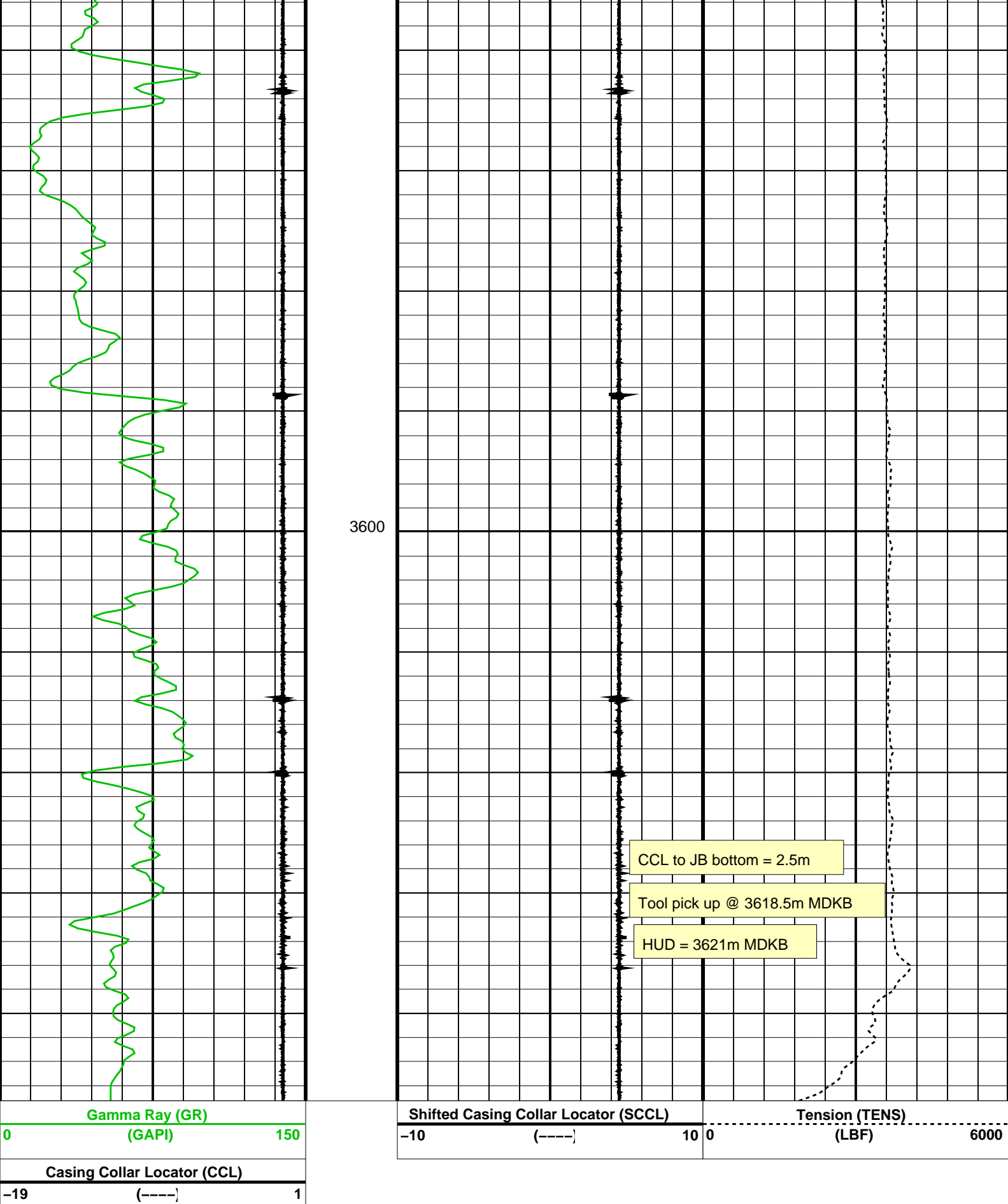
Junk Basket with 6" Gauge Ring
Depth Determination Pass 1

MAXIS Field Log

Company: Esso Australia Pty Ltd					Well: WKF W8B	
Input DLIS Files						
DEFAULT	PERFO_018LUP	FN:17	PRODUCER	19-Jan-2010 03:31	3625.0 M	3473.8 M
Output DLIS Files						
DEFAULT	PERFO_019PUP	FN:18	PRODUCER	19-Jan-2010 03:47	3623.6 M	3471.2 M
OP System Version: 17C0-154						
SHM GUN	17C0-154	PGGT-D		17C0-154		







Parameters		
DLIS Name	Description	Value
System and Miscellaneous		
DO	Depth Offset for Playback	-1.4 M
PS	Playback Processing	NORMAL

OP System Version: 17C0-154

SHM_GUN	17C0-154	PGGT-D	17C0-154
---------	----------	--------	----------

Input DLIS Files

DEFAULT	PERFO_018LUP	FN:17	PRODUCER	19-Jan-2010 03:31	3625.0 M	3473.8 M
---------	--------------	-------	----------	-------------------	----------	----------

Output DLIS Files

DEFAULT	PERFO_019PUP	FN:18	PRODUCER	19-Jan-2010 03:47
---------	--------------	-------	----------	-------------------

Company: **Esso Australia Pty Ltd**

Schlumberger

Well: **WEST KINGFISH W8B**

Field: **WEST KINGFISH**

Rig: **Nabors Rig 175**

Country: **Australia**

Junk Basket with 6" Gauge Ring
MaxR Seting Record
18-Jan-2010