

COMPANY S.A.O.G.C.  
 RIG ATCO-APM RIG A-3  
 WELL ROBINVALE 1 W.C.R.  
 FIELD WILDCAT  
 COUNTRY VICTORIA AUSTRALIA  
 CO-ORDINATES 34°09'13.44"S, 141°41'04.16"E (SUBJECT TO SURVEY)

DEPTH LOGGED FROM SURFACE  
 TO 245.67m  
 DATE LOGGED FROM 28.6.83  
 TO 30.6.83

**GEARHART PTY. LTD.**  
**Geodata Services**  
 AUSTRALIA Telephone: (08) 46 9333  
 No. AH1500100 Telex: AA87137

**OIL and GAS DIVISION**

LITHOLOGY

Sand	Salt	Coal	Marl
Conglomerate	Clays tone	Dolomite	Fossils: general (Ø if fragmented)
Anhydrite or Gypsum	Shale	Chert, cherty	Pyrite, pyritic
Limestone	Metamorphic (general)	Siltstone	Glaucouitic

LOGGING ENGINEERS

1 M. LAMB  
 2 S. OSTLER  
 3  
 4

CHROMATOGRAPH

TOTAL GAS RECORDER CONTINENTAL LABS 900 SERIES

H<sub>2</sub>S RECORDER

INSTRUMENTS CHECKED DAILY

24 HRS. LOGGING SERVICE

SCALE 1:500

ABBREVIATIONS

Z NB New bit	PP Pump pressure	POH Pull out of hole
NCB New core bit	SPM Strokes per minute	RIH Run in hole
Coring	CR Circulated returns	WOW Wait on weather
CS Casing shoe	PR Poor returns	LAT Logged after trip
SWC Sidewall cores	NR No returns	LCM Lost circulation material
EL Electric log	TG Trip gas	DC Depth connection
RRB Rerun bit	CG Connection gas	DST Drill stem test
WOB Weight on bit	DS Directional survey	
RPM Revolutions per minute	WT Wiper trip	

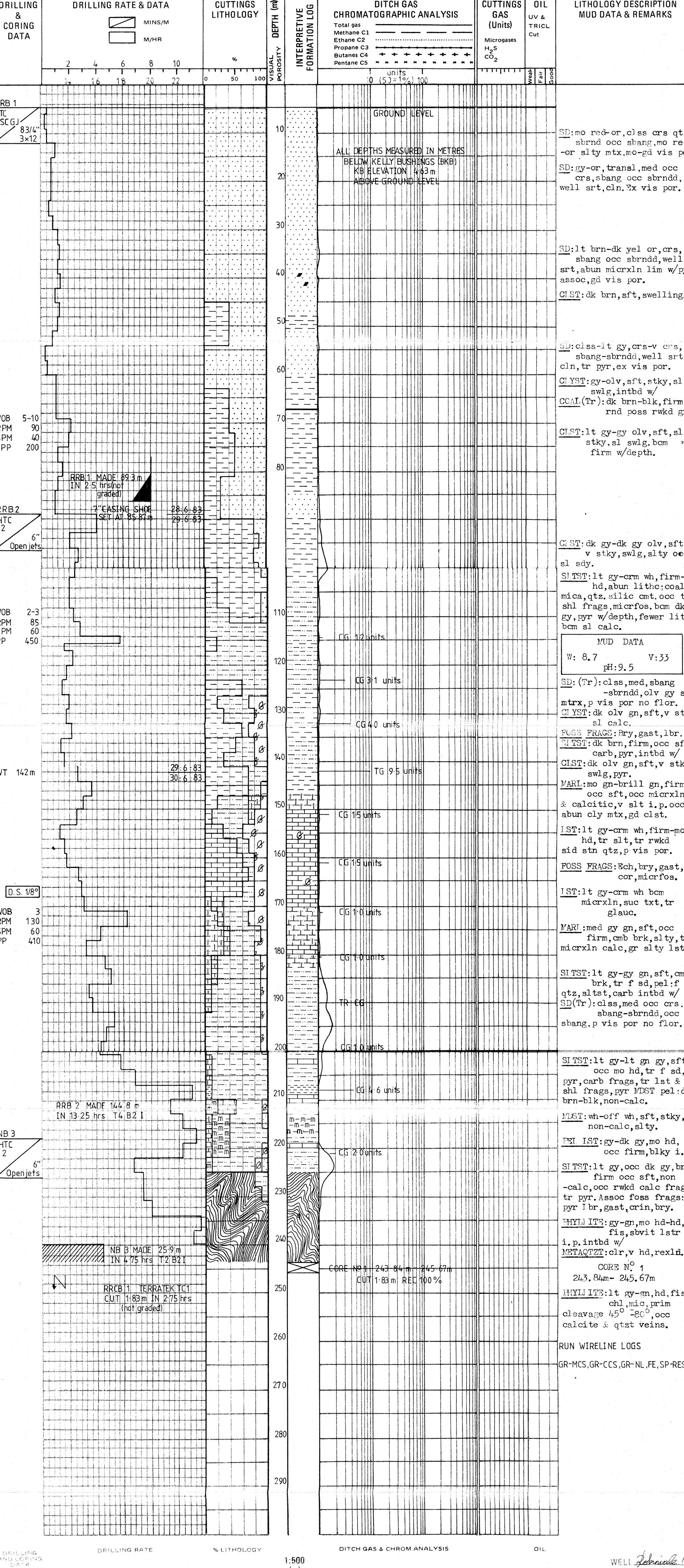
MUD TYPE Variable details specified in drilling rate column

MUD DATA

W Weight lb/gal	CK Cake thickness 32nd inch
MG Mud gradient psi/1000 ft	S Salinity gm/lt Cl
V Funnel viscosity sec/qt	SD Sand content % by volume
PV Plastic viscosity cps	O Oil content % by volume
YP Yield point lbs/100 ft	WL Water loss % by volume
GEL Gel strength lbs/100 ft	SOL Solids content % by volume
PH	PI Alkalinity of filtrate
F Filtrate API ml/30 minutes	GYP Gypsum total/dissolved

CASING AND HOLE DATA

BIT SIZE	HOLE DEPTH	CASING SIZE	CASING SHOE
8 3/4"	89.31m	7"	85.87m
6"	245.67m		



DRILLING RATE & DATA, % LITHOLOGY, DITCH GAS & CHROM ANALYSIS, OIL, SCALE 1:500 (m)

No. AC1500100

WELL *Johanna*  
 PAGE 3

COMPANY S.A.O.G.C.  
 RIG ATCO-APM RIG A-3  
 WELL ROBINVALE 1  
 FIELD WILDCAT  
 COUNTRY VICTORIA AUSTRALIA  
 CO-ORDINATES 34°09'13.44"S, 141°41'04.16"E (SUBJECT TO SURVEY)

DEPTH LOGGED FROM SURFACE  
 TO 245.67m  
 DATE LOGGED FROM 28.6.83  
 TO 30.6.83

**GEARHART PTY. LTD.**  
**Geodata Services**  
 AUSTRALIA Telephone: (08) 46 9333  
 No. AH1500100 Telex: AA87137

**OIL and GAS DIVISION**

LITHOLOGY

Sand	Salt	Coal	Marl
Conglomerate	Clays tone	Dolomite	Fossils: general (Ø if fragmented)
Anhydrite or Gypsum	Shale	Chert, cherty	Pyrite, pyritic
Limestone	Metamorphic (general)	Siltstone	Glaucouitic

LOGGING ENGINEERS

1 M. LAMB  
 2 S. OSTLER  
 3  
 4

CHROMATOGRAPH

TOTAL GAS RECORDER CONTINENTAL LABS 900 SERIES

H<sub>2</sub>S RECORDER

INSTRUMENTS CHECKED DAILY

24 HRS. LOGGING SERVICE

SCALE 1:500

ABBREVIATIONS

Z NB New bit	PP Pump pressure	POH Pull out of hole
NCB New core bit	SPM Strokes per minute	RIH Run in hole
Coring	CR Circulated returns	WOW Wait on weather
CS Casing shoe	PR Poor returns	LAT Logged after trip
SWC Sidewall cores	NR No returns	LCM Lost circulation material
EL Electric log	TG Trip gas	DC Depth connection
RRB Rerun bit	CG Connection gas	DST Drill stem test
WOB Weight on bit	DS Directional survey	
RPM Revolutions per minute	WT Wiper trip	

MUD TYPE Variable details specified in drilling rate column

MUD DATA

W Weight lb/gal	CK Cake thickness 32nd inch
MG Mud gradient psi/1000 ft	S Salinity gm/lt Cl
V Funnel viscosity sec/qt	SD Sand content % by volume
PV Plastic viscosity cps	O Oil content % by volume
YP Yield point lbs/100 ft	WL Water loss % by volume
GEL Gel strength lbs/100 ft	SOL Solids content % by volume
PH	PI Alkalinity of filtrate
F Filtrate API ml/30 minutes	GYP Gypsum total/dissolved

CASING AND HOLE DATA

BIT SIZE	HOLE DEPTH	CASING SIZE	CASING SHOE
8 3/4"	89.31m	7"	85.87m
6"	245.67m		

