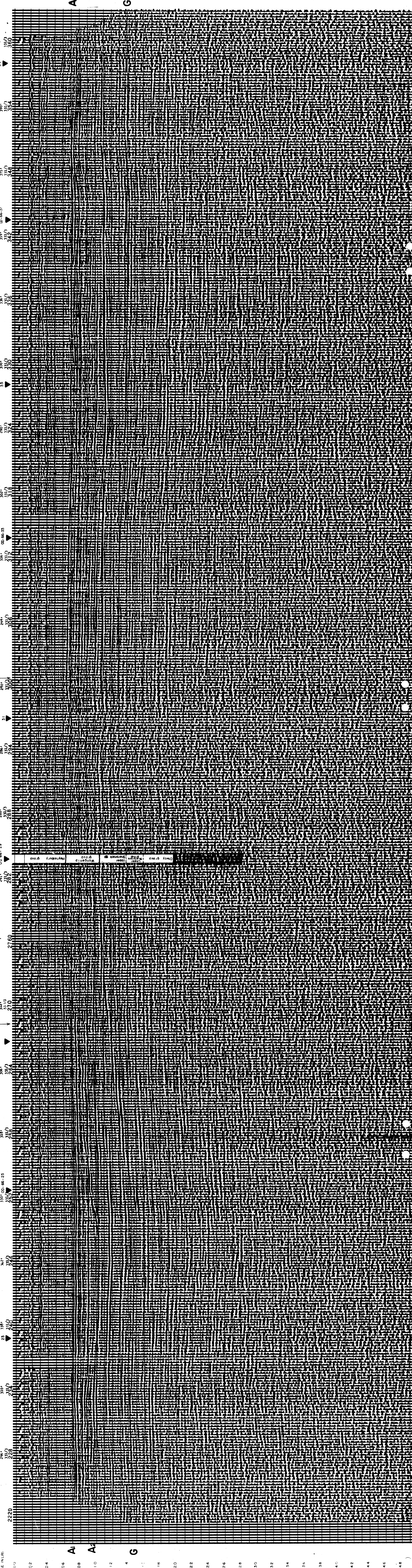


NOTE: WATER DEPTH CORRECTIONS
 --026-- ASSUMED 8000' PER SECOND



0.0
0.2
0.4
0.6
0.8
1.0
1.2
1.4
1.6
1.8
2.0
2.2
2.4
2.6
2.8
3.0
3.2
3.4
3.6
3.8
4.0
4.2
4.4
4.6
4.8
5.0

0.0
0.2
0.4
0.6
0.8
1.0
1.2
1.4
1.6
1.8
2.0
2.2
2.4
2.6
2.8
3.0
3.2
3.4
3.6
3.8
4.0
4.2
4.4
4.6
4.8
5.0

SHELL DEVELOPMENT (AUSTRALIA)
 PROPRIETARY LIMITED

LINE OD-66-B SP220 TO SP288
 PROCESS DIGITAL 600% DBS TIME VARIANT FILTER
 NORTHWEST

RECORDING
 FILTER 10-62 MIX NO
 A.V. GANGED AMPLIFIER FA 50
 SAMPLE RATE 2 MILS DATE 11-66
 PLAYBACK
 DIRECT MIX NO 411 NO
 AMPLIFIER NO 10-50 SEC
 AUTO CORR INT 8-33 SEC APR 0-400
 SAMPLE RATE 2 MILS DATE 12-15-66 REVISIONS 4

VELOCITY AADT 3925 (S.P. 360-202)
 WESTERN
 GEOPHYSICAL
 PROPRIETARY LIMITED

SHELL DEVELOPMENT (AUSTRALIA)
 PROPRIETARY LIMITED

LINE OD-66-B SP294 TO SP360
 PROCESS DIGITAL 600% DBS TIME VARIANT FILTER
 NORTHWEST

RECORDING
 FILTER 10-62 MIX NO
 A.V. GANGED AMPLIFIER FA 50
 SAMPLE RATE 2 MILS DATE 11-66
 PLAYBACK
 DIRECT MIX NO 411 NO
 AMPLIFIER NO 10-50 SEC
 AUTO CORR INT 8-33 SEC APR 0-400
 SAMPLE RATE 2 MILS DATE 12-15-66 REVISIONS 4

VELOCITY AADT 3925 (S.P. 360-202)
 WESTERN
 GEOPHIICAL
 PROPRIETARY LIMITED

SHELL DEVELOPMENT (AUSTRALIA)
 PROPRIETARY LIMITED