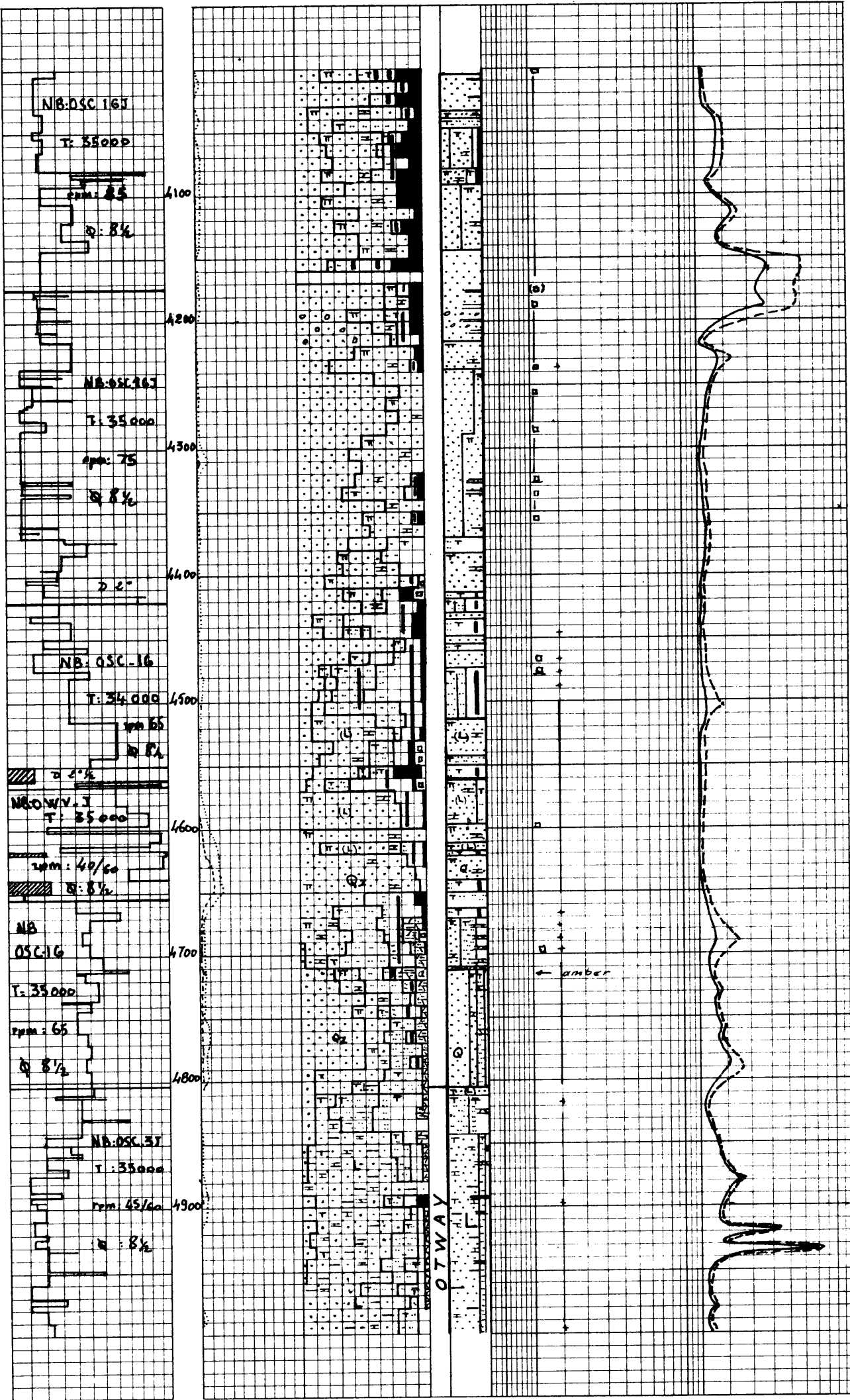


22 - 7 - 67

23 - 7 - 67

24 - 7 - 67



4005-4092:  
Sst as 3730-3705 and Clst & C as above  
At 4040-50: Sst, brn ocre (red)  
(Fri), (carb), (mic)

4092-4247:  
Sst, wh, crs-crs, ang clear Qz,  
(cl), minor weathered F, (mic)  
lithic brn & sh brn, py, in a  
cmt of Qz silt, Dol and possibly  
translucent zeolite - (por)

Qz S, crs-crs, ang (rnd) srt,  
clear, slightly interlocked.  
(Probably originates from pro-  
ca deal sst or zoned sec-  
ondary cementation).  
- minor clst & C as above

4247-4370:  
Sst & Qz S as above

4370-4385:  
Clst, beige earthy, fri, sst  
4385-4410:  
Sst, lt gy, f-m, (ang) srt Qz, (cons)  
lithic brn, (carb), in a cmt of  
Qz silt, dol. (Por)

4410-4515:  
Interbedded:  
Sst, lt gy, f-m, ang-(ang) clear Qz,  
(fros), (carb), (blk brn) in a cmt  
of Dol & kaolinite. Por - (por)  
Qz S, crs, (rnd), srt  
Clst, brn-beige, earthy, fri, carb-  
carb, silt grading to sst  
Sst, lt gy, occa beige, earthy, cl  
carb, mic.

4515-4805:  
At top: Sst, (Lit), lt gy, hd, cont,  
f-m, ang-(ang), (srt), (carb), (mic)  
yel weathered F, (chlorite), occa py,  
in a cmt of Qz silt & Dol with proba-  
ble secondary zeolite. Tight

Below 4600: Sst becoming,  
Qz Sst, minor to rare lit grn, dir-  
ty wh, f-m, ang clear Qz, srt,  
cmt of Qz, Dol, zeolite, cl. (por),  
becoming at 4710  
m-crs, poorly consolidated with  
possible no cemented zones por.  
These sst interbedded with  
Sst, dk gy-gy beige, blk, earthy  
cl, (carb), mic, frequent yel small  
brn  
Clst, gy beige & (brn), silt, (carb)  
minor

Note: Below 4670, presence of sec-  
ondary brn ocre Sid, in cmt of sst, and  
stringers of Sid, brn ocre, silt, cl, gra-  
ding to sid cl.

4805-4842:  
Sst, gy gn & gy beige, earthy, (cons)  
mic, cl, wh brn,  
sh, gy gn, cont, sst-sst grading to sst  
Sst, gy gn, lit (cons) f-m, ang  
(rnd), fros Qz, (srt), mic,  
chloritic, yel org zeolite,  
kaolinite, weathered F, in an  
abd cmt of zeolite, calc, lit mat.  
(Por)