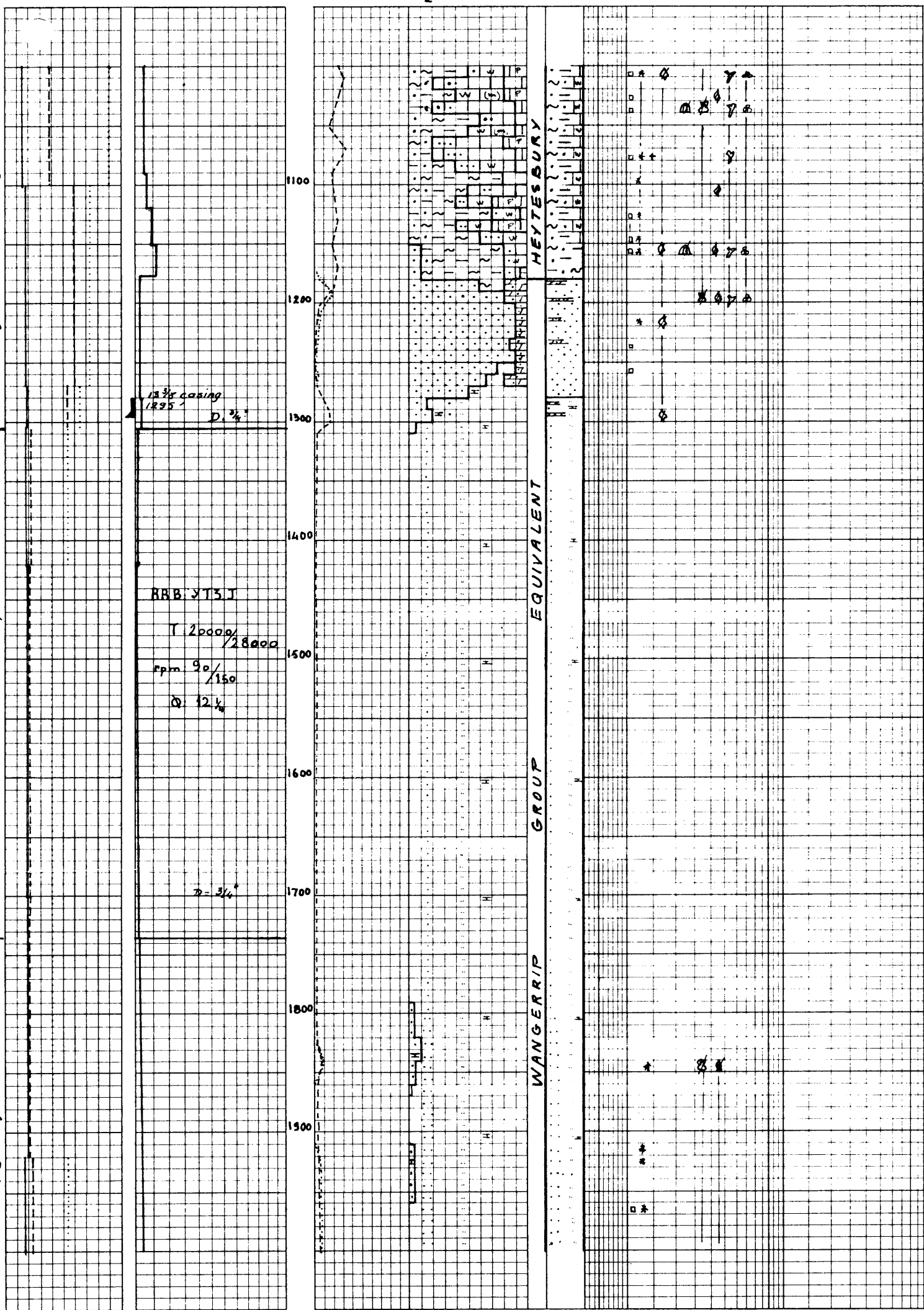


NERITA-1.

2/77

9 - 7 - 67
15 - 7 - 1967
16 - 7 - 67



970-1180: Interbedded:
cl Mrl, gy, silt-s, bcl, py, abundant microfauna.
- Wkst, gy, bcl, gl, py, micro fauna; in part grading to Mdst
At 1030, Wkst become gy-(brn) more silt, s, (gl), (py)
Minor Pkst

1180-1280:
Qz S, crs, (rnd)-(ang), clear, minor milky, srt, Por
Presence of streaks of Ankerite? and ankeritic Conc. brn ocre, minor Bcl & Gcl, s

1280-2090
Cl, dk brn-(blk), plastic, (calc), (s), (silt), becoming plastic to lumpy below 1790 and more silt & s
Minor:
Sst, brn ocre, f, ang-(ang) srt-srt Qz, in a cl Cmt, (calc) (Por)
Presence of Lbr & Gast debris, minor to trace of GLC and Ty