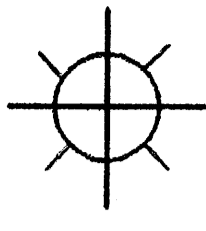


# Log Interpretation LA-BELLA-1



Operator: BHP Petroleum  
 Permit: VIC P30  
 State: Victoria  
 Location: 30°00'14.2"S  
 142°41'42.9"E  
 Log measured from KB  
 Permanent datum MSL  
 Elevations: KB: 25.3m  
 DF: 25.0m  
 GL: -95.0m



ABANDONED  
GAS WELL

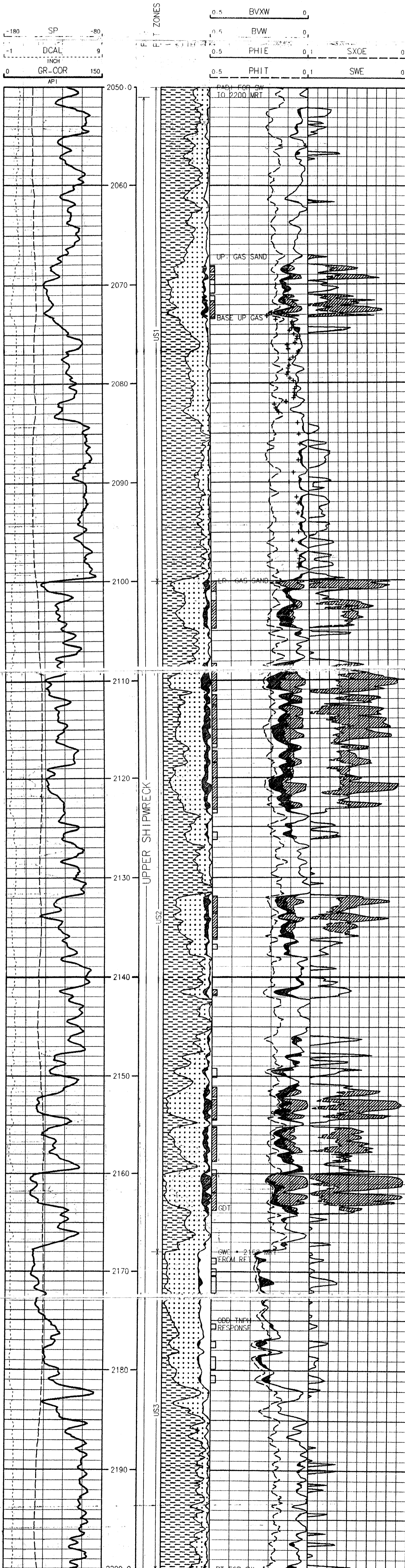
Drilling Mud:  
 Rm: 0.089 • 25 deg C  
 Rmf: 0.072 • 25 deg C  
 Rmc: 0.128 • 25 deg C  
 Mud SG: 1.22 g/cc  
 BHT: 104 deg C

Remarks:  
 PEF baryte affected and not used  
 Unusual TNPH response immediatly  
 below gas-water contact  
 refer to text for more details

Logs Used:  
 LLD LLS MSFL GR CALI SP  
 RHOB TNPH DRHO DT  
 RADI from MWD to 2200 nRT  
 Analyst: Andy Calcraft

Interpretation Intervals:

Top	2050	2100	2168	2200	2285	2295	2597
Bottom	2100	2168	2200	2285	2295	2597	2715
Name	US1	US2	US3	US4	US5	LS1	OT
Rw25 C	0.292	0.659	0.659	0.385	0.385	0.385	0.385



## LA-BELLA-1

Mnemonic Nomenclature

LLD	Resistivity, Laterolog Deep	BVW		SXOE • PHIE
LLS	Resistivity, Laterolog Shallow	BVXW		SWE • PHIE
RXO	Invaded Zone Resistivity, MSFL	Rw25	Rw converted to 25 °C	
PHIT	Total Porosity, incl. bound water	DCAL	Differential Caliper	
PHIE	Effective Porosity	PEF	Photoelectric Log	
SWE	Water Saturation, Eff Por System	RHOB	Bulk Density	
SXOE	Filtrate invaded zone SW	GR-COR	Env Cor Gamma Ray	
RADI	Inverted Resistivity from MWD	TNPH	Neutron Porosity	
RT	True Resistivity	DRHO	Density Correction	
		DT	Sonic Travel Time	