



CEMENT BOND LOG

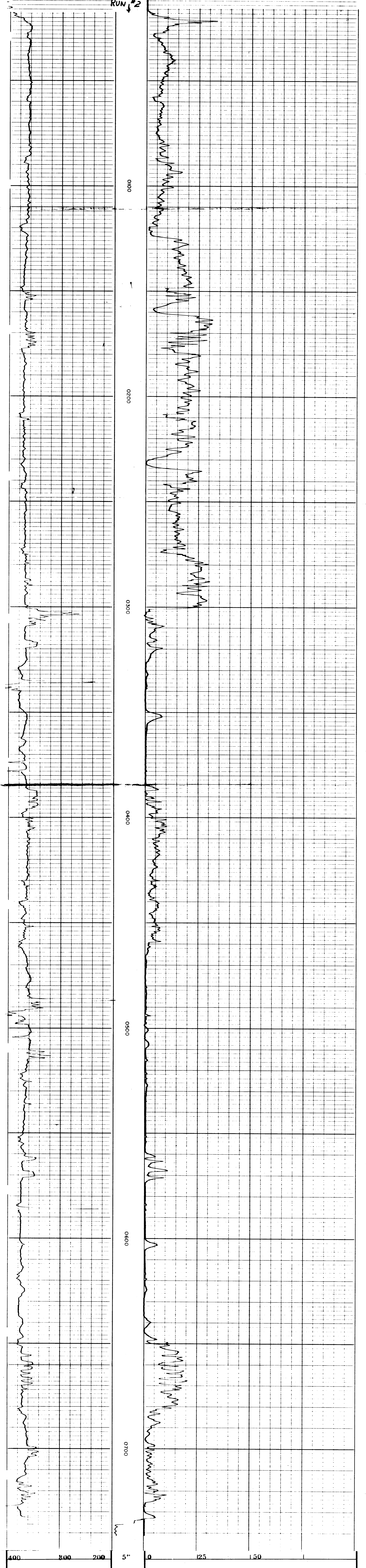
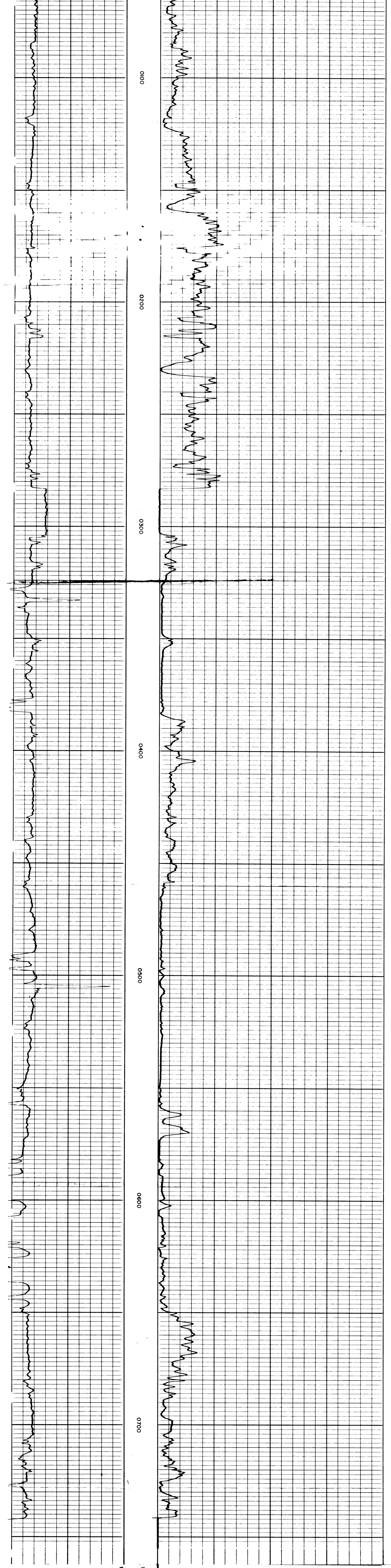
SPRINT AND REFLECTOR
P602840

COUNTRY	AUSTRALIA	COMPANY	ALLIANCE OIL DEVELOPMENT
FIELD	WILDCAT	WELL	CAROLINE #1
WELL	CAROLINE #1	FIELD	WILDCAT
COMPANY	ALLIANCE	COUNTRY	AUSTRALIA
		STATE	S.A.
Location	37° 56' 30" S 140° 54' 30" E	Other Services	IES
Permanent Datum	EL. 210	Ref. No.	
Log Measured From	16.3 Ft Above Perm Datum	D. F.	
Drilling Measured From	16.3 Ft Above Perm Datum	G. I. 210	
Run No. 1 Depth Scale	ONE	5"	
Date	1-13-66		
Interval Measured	7100		
Gaing Schlumberger	7432		
Gaing Driller	7413		
Bottom Receiver	7410		
Bottom Driller	7390		
Density Viscosity	9.4	57	
BHT	270		
Casing Size	13 1/8"	8	7.46
Casing Weight	2		
Casing Thickness	2		
Bit Size	17 1/2"	761	
Operating Rig Time	2	1027	
Case No.	4322		
Case Made by	GREAF		
Wellbore	LEBLANC-STUART		

REMARKS :

CEMENTING DATA				RECORDING DATA			
Date	Hour	DEPTH	Nb of Sacks	Type of Cement	RUN No	CBL Cartridge	1
						Centralizer	VAC-D 74
						GR Sensitivity Top	YES
GAMMA RAY CALIBRATION DATA				GR Time Constant		GR Cartridge	
RUN No				GR Detector		Recording Speed	4000' H
Background	cps	cps	cps				
+ Test Source	cps						
Galva Increase	div.						
Sensitivity Top							

TRANSIT TIME			SONIC AMPLITUDE		
from transmitter to receiver microseconds			millivolts		
400	1200	200	0	25	150



COMPANY	ALLIANCE OIL DEVELOPMENT	AUSTRALIA N.L.	Run No	2	SCHL. F.R.	740
WELL	CAROLINE #1				SCHL. T.D.	
FIELD	WILDCAT				DRLR. T.D.	2590
COUNTRY	AUSTRALIA	STATE	S.A.			

CALIBRATION FILMS

