

# VERTICAL SEISMIC PROFILE

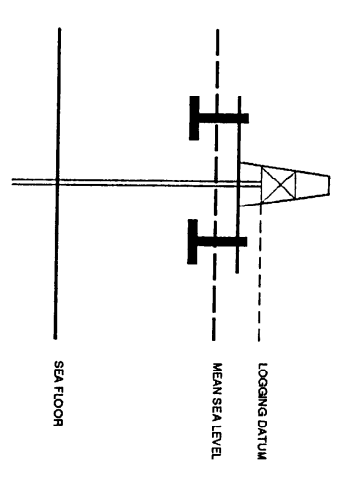


ZERO OFFSET VSP  
STACKED DATA  
PLOT 1

Company: BHP PETROLEUM PTY LTD  
Well: CONAN-1  
Field: WILDCAT  
Country: AUSTRALIA

Reference No: SY-561137/561138 Interval: 1955.00 to 6500.00  
Date Logged: 2 AUG 1995 Date Processed: 7 AUG 1995  
Location: 038 S2 14.097' S 142 48 S2 022' E  
Elevations: KB: 25.30 DF: 25.00 QI: -70.00  
Permanent Datum: MSL Depth Units: METRES

FIELD RECORDING: Equipment: FLORESON Location: Program Version: 729/427  
CONTRACTOR: Analyst: STORCHMEYER Camera: 571 Machine: 203  
Logging Datum: 25.30  
ELEVATION ABOVE MEAN SEA LEVEL  
Seismic Reference Datum: 0.00



Total Number of Levels: 55  
Depth Reference: SPD  
Time Reference: SPD

Run	Date	Tool Type	BR Start Depth	CRINGE START	Top Depth	Bottom Depth
1	5-29-95	LOG	7225.74	123.80	1071.00	1940.00
VSP	Date	Run	Time	Event	Time	Event
1	1-24-95	50 M	50 M	5 M BELOW HBL	50 M	5 M BELOW HBL

REMARKS

FOLD HERE

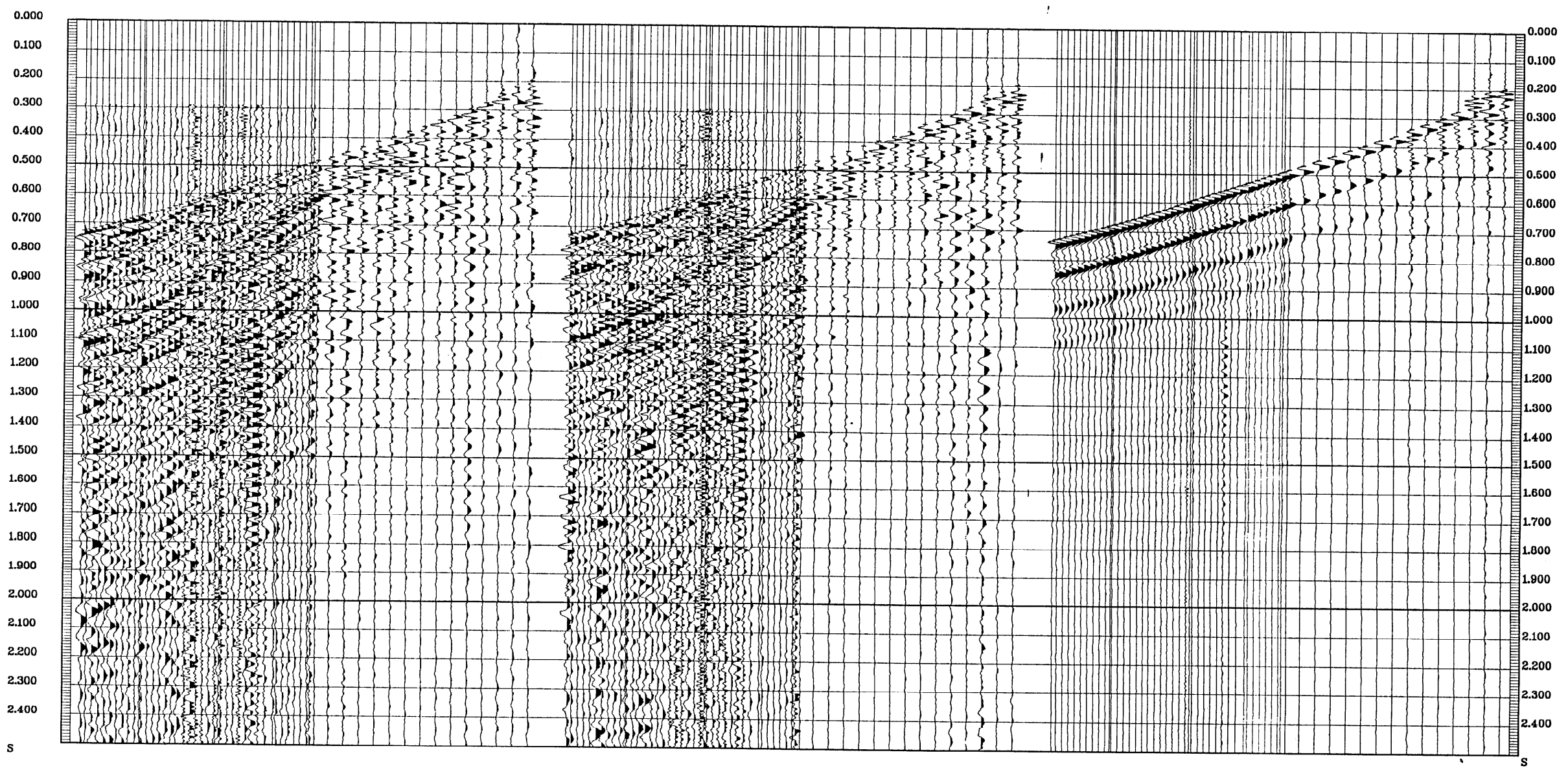
All interpretations are opinions based on inferences from electrical or other measurements and we cannot, and do not guarantee the accuracy or correctness of any interpretations, and we shall not be held responsible for any loss, costs, damages or expenses incurred or sustained by anyone resulting from any interpretations made by any of our officers, agents or employees. These interpretations are also subject to Clause 4 of our General Terms and Conditions as set out in our current Price Schedule.

**\*\* MEDIAN STACK \*\***  
(DOWNHOLE DATA)  
MEDIAN COHERENCY STACK OF THE  
DOWNHOLE VERTICAL COMPONENT  
PROCESSING SEQUENCE:  
MEDIAN STACK APPLIED  
BANDPASS FILTER : 4 - 120 HZ  
VERTICAL SCALE : 10 CM/SEC  
POLARITY (S.E.G.) : REVERSE  
TIMES REFERENCED TO HYDROPHONE

**\*\* MEDIAN STACK \*\***  
(DOWNHOLE DATA)  
MEDIAN COHERENCY STACK OF THE  
DOWNHOLE 2 HORIZONTAL COMPONENT  
PROCESSING SEQUENCE:  
MEDIAN STACK APPLIED  
BANDPASS FILTER : 4 - 120 HZ  
VERTICAL SCALE : 10 CM/SEC  
POLARITY (S.E.G.) : REVERSE  
TIMES REFERENCED TO HYDROPHONE

**\*\* MEDIAN STACK \*\***  
(DOWNHOLE DATA)  
MEDIAN COHERENCY STACK OF THE  
DOWNHOLE 1 HORIZONTAL COMPONENT  
PROCESSING SEQUENCE:  
MEDIAN STACK APPLIED  
BANDPASS FILTER : 4 - 120 HZ  
VERTICAL SCALE : 10 CM/SEC  
POLARITY (S.E.G.) : REVERSE  
TIMES REFERENCED TO HYDROPHONE

RAW DEPTH M	TRANSIT TIME S	LEVEL NO	MAX AMPLITUDE	MIN AMPLITUDE
500.1	0.197	56	567.262	-620.732
500.2	0.202	57	597.868	-590.126
500.3	0.205	58	144.839	-790.160
500.4	0.209	59	146.829	-787.173
500.5	0.210	60	290.072	-632.929
500.6	0.210	61	124.323	-812.610
500.7	0.217	62	44.996	-863.420
500.8	0.217	63	14.724	-873.802
500.9	0.218	64	127.222	-143.209
501.0	0.218	65	96.922	-143.209
501.1	0.214	66	17.615	-424.524
501.2	0.212	67	62.321	-417.111
501.3	0.212	68	53.296	-412.000
501.4	0.212	69	71.222	-424.524
501.5	0.212	70	67.922	-424.524
501.6	0.212	71	67.922	-424.524
501.7	0.212	72	67.922	-424.524
501.8	0.212	73	67.922	-424.524
501.9	0.212	74	67.922	-424.524
502.0	0.212	75	67.922	-424.524
502.1	0.212	76	67.922	-424.524
502.2	0.212	77	67.922	-424.524
502.3	0.212	78	67.922	-424.524
502.4	0.212	79	67.922	-424.524
502.5	0.212	80	67.922	-424.524
502.6	0.212	81	67.922	-424.524
502.7	0.212	82	67.922	-424.524
502.8	0.212	83	67.922	-424.524
502.9	0.212	84	67.922	-424.524
503.0	0.212	85	67.922	-424.524
503.1	0.212	86	67.922	-424.524
503.2	0.212	87	67.922	-424.524
503.3	0.212	88	67.922	-424.524
503.4	0.212	89	67.922	-424.524
503.5	0.212	90	67.922	-424.524
503.6	0.212	91	67.922	-424.524
503.7	0.212	92	67.922	-424.524
503.8	0.212	93	67.922	-424.524
503.9	0.212	94	67.922	-424.524
504.0	0.212	95	67.922	-424.524
504.1	0.212	96	67.922	-424.524
504.2	0.212	97	67.922	-424.524
504.3	0.212	98	67.922	-424.524
504.4	0.212	99	67.922	-424.524
504.5	0.212	100	67.922	-424.524
504.6	0.212	101	67.922	-424.524
504.7	0.212	102	67.922	-424.524
504.8	0.212	103	67.922	-424.524
504.9	0.212	104	67.922	-424.524
505.0	0.212	105	67.922	-424.524



COMPANY BHP PETROLEUM PTY LTD  
FIELD WILDCAT  
WELL CONAN-1  
COUNTRY AUSTRALIA

