

COMPANY : BHPP Pty Ltd.
 RIG : OCEAN BOUNTY
 AREA : OFFSHORE OTWAY BASIN, VICTORIA
 COUNTRY : AUSTRALIA
 LOCATION : 38 Deg 32' 33.5" SOUTH, 142 Deg 23' 17.86" EAST
 ELEVATION : Air Gap 25.00 m (RT-MSL)
 Water Depth 77.80 m (MSL-SB)

SPUD DATE : 09/08/95
 TO DATE : 14/08/95
 TO DRILLER : 1882 m (1882 m TVD)
 TO WIRELINE : 1859 m (1859 m TVD)
 LOGGED FROM : 09/08/95 @ 78 m
 LOGGED TO : 15/08/95 @ 1882 m
 STATUS : PLUGGED AND ABANDONED

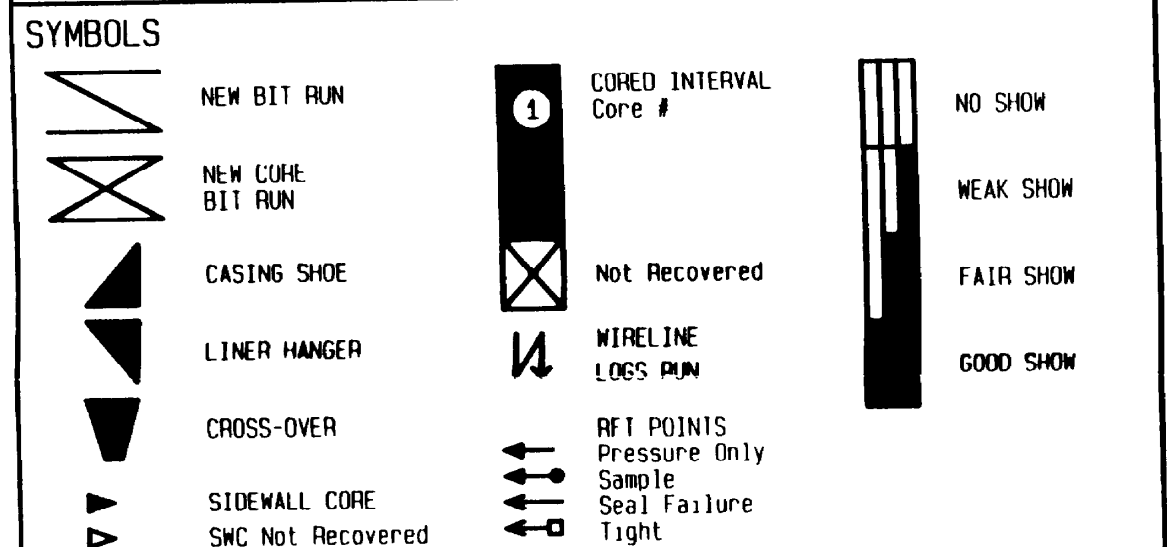
WELL CONFIGURATION

BIT SIZE in	HOLE DEPTH m	CASING SIZE in	SHOE DEPTH m
36	120	20	119
17 1/2	1225	13 3/8	1216
12 1/4	1882		

LOGGING ENGINEERS

A FORD
 A JAMES
 T GEDDES
 R JONES

DEPTH SCALE
 1:2500



ABBREVIATIONS

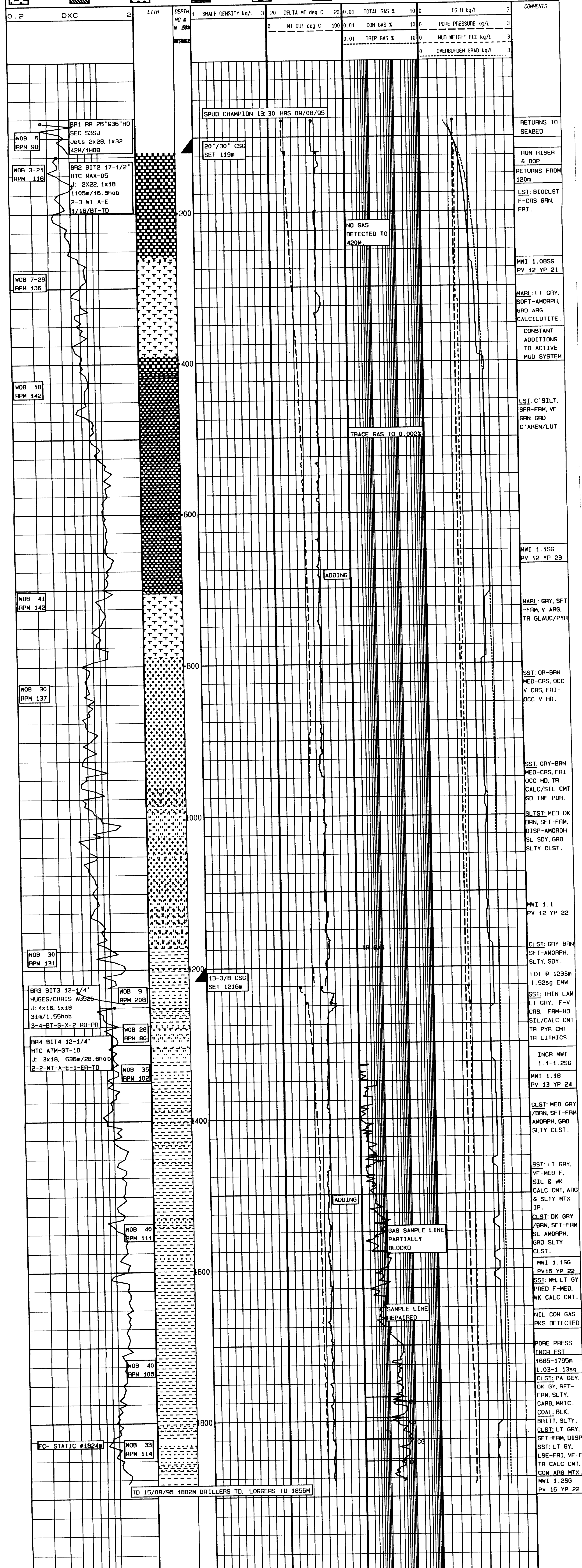
DS DIRECTIONAL SURVEY
 MT WIPER TRIP
 PPH PULL OUT OF HOLE
 RIN RUN IN TO HOLE
 NWI NUT ON WEATHER
 LAT LOGGED AFTER TRIP
 LCM LOST CIRCULATION MATERIAL
 DC DEPTH CORRECTION
 DST DRILL STEM TEST
 RMG REAMING
 NL NIP LOSSES
 FR FLOW RATE
 FC FLOW CHECK
 BR BIT RUN

MUD DATA

M WEIGHT kg/L
 MG MUD GRADIENT ps/ft
 V FUNNEL VISCOSITY s/100
 PV PLASTIC VISCOSITY cP
 YP YIELD POINT lb/cf2
 GEL GEL STRENGTH lb/cf2
 pH ACIDITY
 F FILTRATE ml/30m
 CX CAKE THICKNESS in/32
 S SALINITY mg/L
 SD SANDY CONTENT %
 O OIL CONTENT %
 WL WATER LOSS ml/30m
 SOL SOLIDS CONTENT %
 PF FILTRATE ALKALINITY c3/c3
 GYP GYPSUM CONTENT kg/m3

LITHOLOGY LEGEND

AMPHIBOLITE	CALCARENITE	CLAYSTONE	DOL. LIMESTONE	HALLITE	SANDSTONE	SHALE	GLAUCONITIC	GRANULITE
BASALT	CALCULITE	CLAYSTONE	DOL. CALCARENITE	INTERBEDDED CALC. CLAYSTONE AND SANDSTONE	SANDSTONE (MED)	SILTSTONE	BIVALVE	GASTROPOD
MELTILLITE	CALCISILTITE	COAL	DOLERITE	LIMESTONE	SANDSTONE (CRS)	RECRYSTALLISED	RADIOLARITES	INDETERMINATE
CALC. CLAYSTONE	CEMENT	CONGLOMERATE	DOLOMITE	MARL	SANDSTONE (V. CRS)	PELOSOPHIC	BRYOZOA	PLANT REMAINS



0.2 DXC 2 LITH DEPTH

SHALE DENSITY kg/L	DELTA MT deg C	TOTAL GAS %	FG D kg/L
0	0	0	0
0	0	0	0
0	0	0	0
0	0	0	0

0.2 DXC 2 LITH DEPTH

SHALE DENSITY kg/L	DELTA MT deg C	TOTAL GAS %	FG D kg/L
0	0	0	0
0	0	0	0
0	0	0	0
0	0	0	0