

REMARKS

DRILLING CONTRACTOR
O.D.E.

RIG NO.
11

SPUD DATE
9 AM, 18-4-72

TYPE MUDS
FRESHWATER/GEL: 228'-5900'

CASING RECORD

13 3/8" AT 212'

9 5/8" AT 2485'

HOLE SIZE

12 1/4" TO 2500'

8 1/2" TO 5900'

OIL: Based on live oil in unwashed cuttings and percentage staining of washed cuttings.

ABBREVIATIONS

NB NEW BIT
RRB RERUN BIT
CB CORE BIT
CR CIRCUULATE RETURNS
NR NO RETURNS
PR POOR RETURNS
LAT LOGGED AFTER TRIP
TG TRIP GAS
CG CONNECTION GAS
C CARBIDE
DST DRILL STEM TEST
J DST INTERVAL
I CORE INTERVAL

W MUD WEIGHT
V MUD VISCOSITY
F MUD FILTRATE CC/30 MIN
FC FILTER CAKE
SC SAND CONTENT
S SALINITY G/G
PPM CL
R RESISTIVITY OF MUD
RF RESISTIVITY MUD FILTRATE

LITHOLOGY SYMBOLS

LINE DOLO- GYPSUM SALT COAL
STONE MITE AND ANHYDRITE LIGNITE

CLAY SHALE SILT- SANDY SAND CONGL. CHEST VOL. CARBON INTRU. MARL

COMPANYSHELL DEVELOPMENT (AUST) PTY. LTD.

WELL "ROWANS" 1

FIELD OTWAY BASIN

LOCATION 38°27'34.86S; 142°47'19.26E

COUNTY, STATE VICTORIA, AUSTRALIA

API WELL INDEX NO.

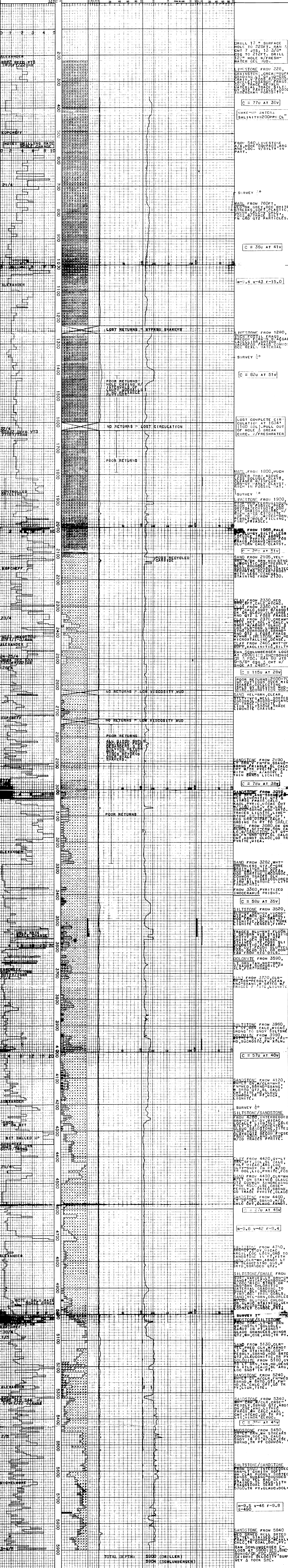
ELEVATION 218' (66) 232' (KB)

DATE FROM 20-4-72 TO 4-5-72

DEPTH FROM 228' TO 5900'

UNIT NO. 8

LOGGING GEOLOGISTS
JOHN KOPCHEFF
HARRY ALEXANDER
TOM MITCHELMORE



SHELL DEVELOPMENT (AUSTRALIA) PTY. LTD.

OTWAY BASIN
"ROWANS" 1
CUTTINGS AND MUD LOG

Scale 1:1200

Author Exploration Logging Date July 1972
W.C.R. S.D.A. 131 End: 5 Draw No 5505