

GEOGRAM*

(Synthetic Seismogram)

A Mark of Schlumberger

Company: BRIDGE OIL LTD.
Well: MYLOR #1
Field: EXPLORATION
Country: AUSTRALIA
Reference No: SYL561023/561024 Interval: 1920.00 to 2922.00
Date Logged: 26 JUN 1994 Date Processed: 30 JUN 1994
Location: 038 31' 50.75" S 142 55' 27.80" E
Elevations: KB: 103.20 DF: 102.90 GL: 97.40
Permanent Datum: MSL Depth Units: METRES

LOG INFORMATION

FIELD RECORDING: Engineer: J.GARICA Location: GDA Program Version: 40.2
COMPUTATION: Analyst: ANIBOSCO Centre: SYD Baseline: 20.5
Logging Datum: ELEVATION ABOVE MEAN SEA LEVEL
103.20
Sismic Reference Datum: 0.00
Sonic Calibration By Check Shots: YES Sonic Edited By Analyst: YES
Two-Way Time Sample Interval: 2 ms Environment:

True Vertical Depth Corrections Applied:
Source of True Vertical Depth Data:
Maximum Hole Deviation: 0

Run	Date	Tool Type	Bit Size	Depth	Casing Size	Top Depth	Bottom Depth
1	26-06-94	DLL-DLH	6.5 IN			0 M	1922 M

GEOGRAM MODEL ASSUMPTIONS

Equal time slice model of horizontal plane layers.
Plane acoustic waves at normal incidence.
No intrinsic attenuation.
POLARITY
An upgoing wave, reflected by an increase in acoustic impedance with depth, is displayed as a white trough under normal polarity.
SIGNATURES
All signatures displayed in the Geogram results correspond to a wavelet convolved with a reflection coefficient of 0.5 (A decrease in acoustic impedance with depth).
REMARKS

The well name, location and borehole reference data were furnished by the customer.

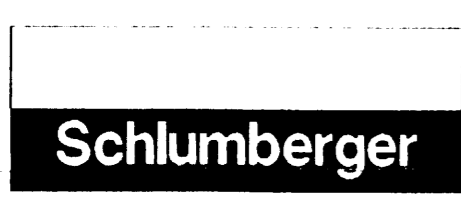
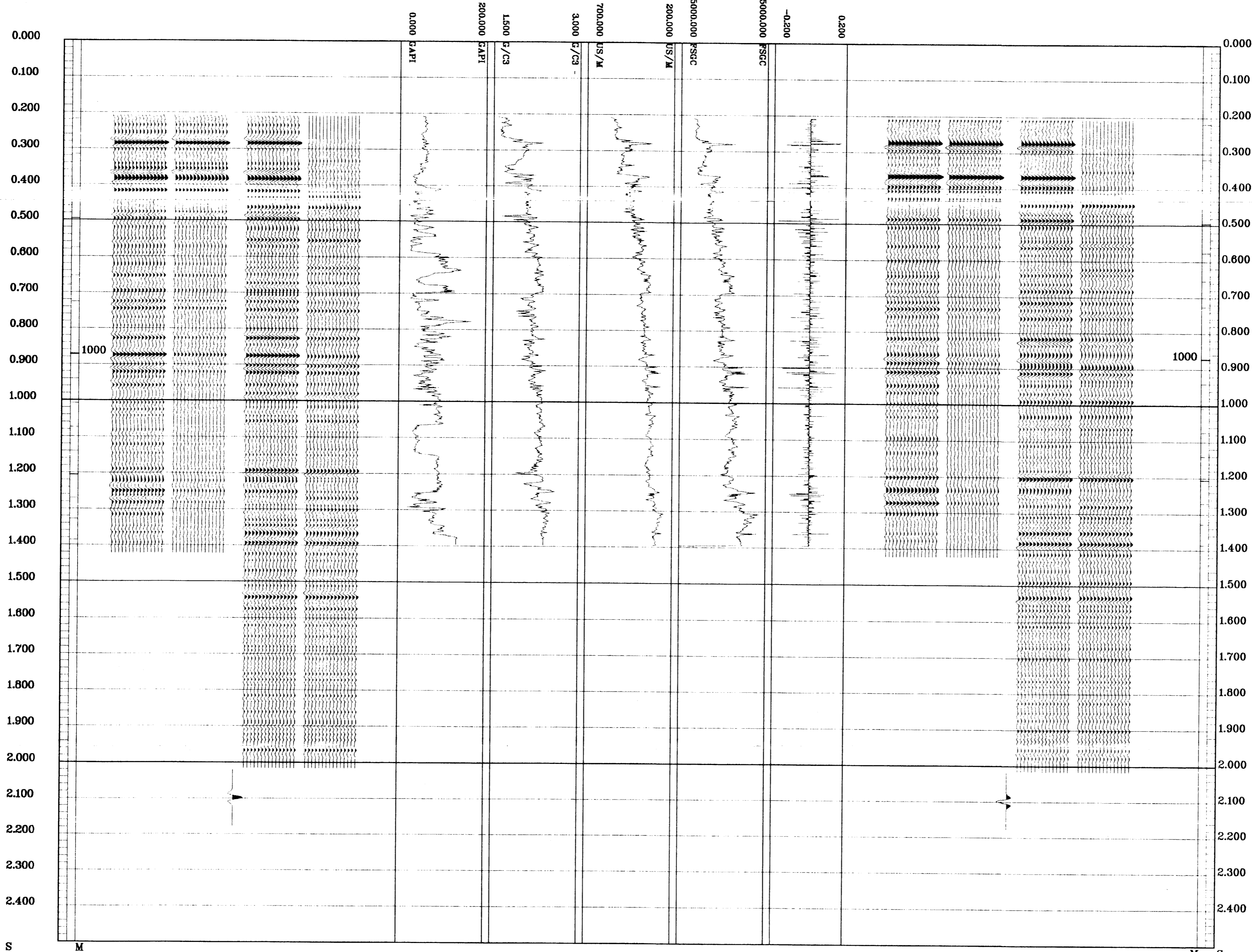
All interpretations are opinions based on inferences from electrical or other measurements and we cannot, and do not guarantee the accuracy or correctness of any interpretations, and we shall not, except in the case of gross or willful negligence on our part, be liable or responsible for any loss, costs, damages or expenses incurred or sustained by anyone resulting from any interpretations made by any of our officers, agents or employees. These interpretations are also subject to Clause 4 of our General Terms and Conditions as set out in our current Price Schedule.

**** GEOGRAM ****

35 HERTZ ZERO PHASE RICKER WAVELET

VERTICAL SCALE = 5 IN/SEC

MULTIPLES ONLY REVERSE POLARITY
PRIMARYS AND MULTIPLES REVERSE POLARITY
PRIMARYS WITH TRANSMISSION LOSS REVERSE POLARITY
PRIMARYS REVERSE POLARITY
REFLECTION
ACOUSTIC IMPEDANCE
SONIC
DENSITY
GAMMA RAY
MULTIPLES ONLY NORMAL POLARITY
PRIMARYS AND MULTIPLES NORMAL POLARITY
PRIMARYS WITH TRANSMISSION LOSS NORMAL POLARITY
PRIMARYS NORMAL POLARITY



COMPANY BRIDGE OIL LTD.
FIELD EXPLORATION
WELL MYLOR #1
COUNTRY AUSTRALIA