

SEISMIC CALIBRATION LOG

(Adjusted Continuous Velocity Log)

DEPT. MGT. RES. & ENV. PEO4204

Company: BRIDGE OIL LTD.
 Well: MYLOR #1
 Field: EXPLORATION
 Country: AUSTRALIA

Reference No: SYJ-961023/961024 Interval: 1920.00 to 292.00

Date Logged: 26-JUN-1994 Date Processed: 30-JUN-1994

Location: 038 31' 50.75" S 142 55' 27.80" E
 Elevations: KB: 103.20 DF: 102.90 GL: 97.40

Permanent Datum: MSL Depth Units: METRES

FIELD RECORDING: Engineer: J. GARCIA Location: CEA Program Version: 40.2
 COMPUTATION: Analyst: A. MIBSONO Centre: SVI Baseline: 20.5

Logging Datum: 103.20
 Seismic Reference Datum: 0.00

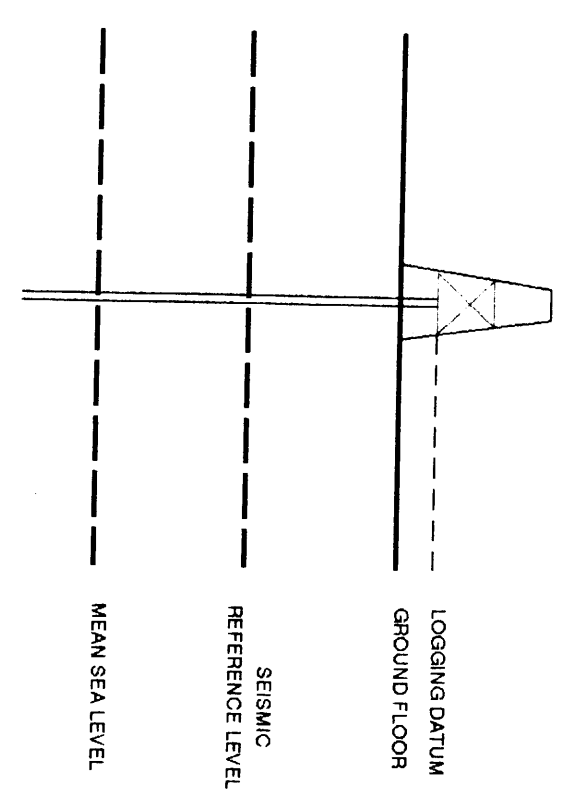
ELEVATION ABOVE MEAN SEA LEVEL

Total Number of Levels: 57
 Depth Reference: SRD

Run	Date	Tool Type	Bit Size Depth	Casing Size/Depth	Top Depth	Bottom Depth
1	26-06-94	DLL-LDL	8.5 IN		0 M	1822 M

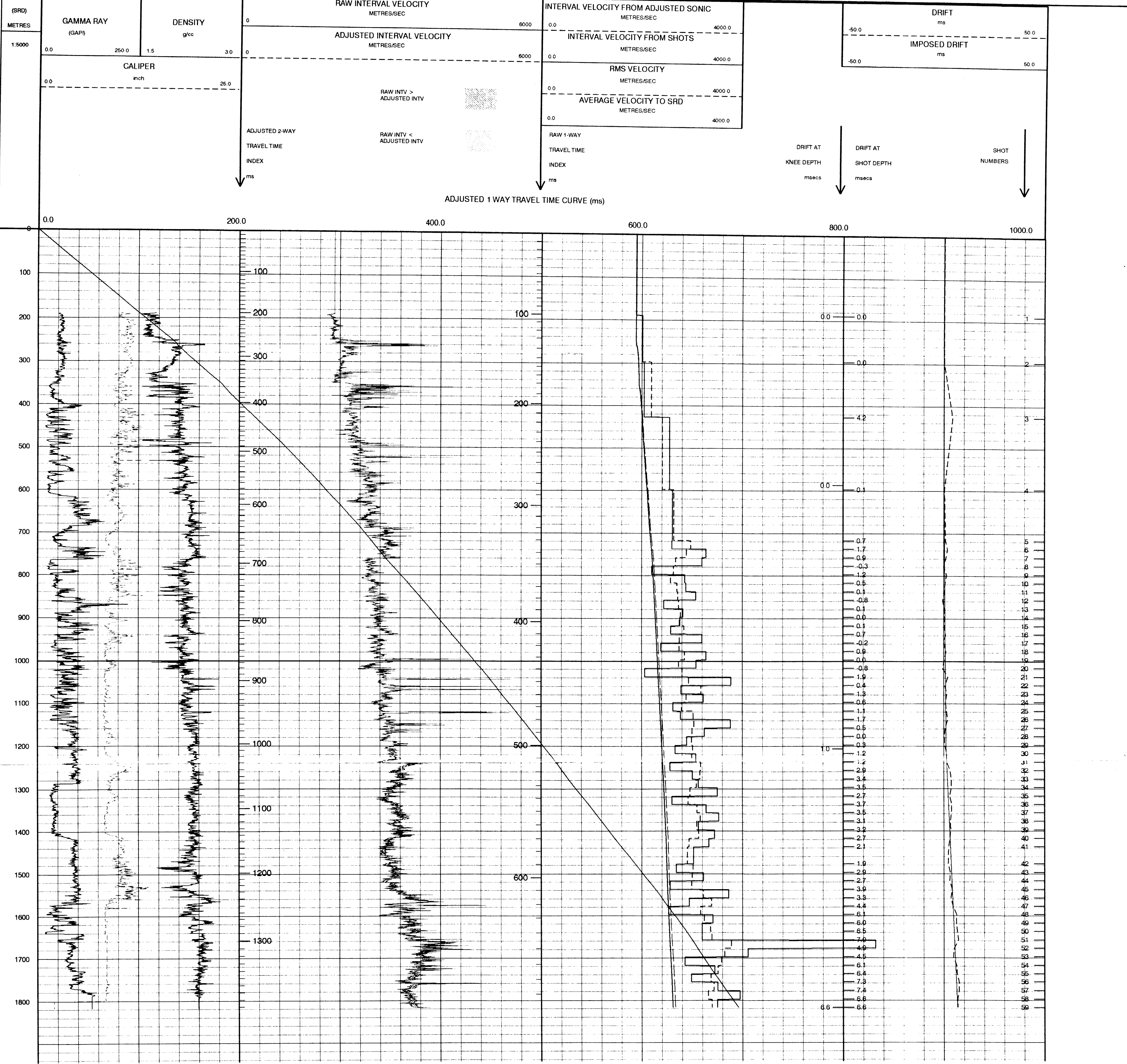
VSP Run Date Gun Core Accel Gun Elevation Gun Accel Gun Azimuth
 1 26-06-94 65 AND 27 M 65 AND 27 M 2.6 AND 2.0 M BELOW GL 2.6 AND 2.0 M BELOW GL 0 AND 140 DEGREE AND 140 DEGREE

REMARKS



The well name, location and borehole reference data were furnished by the customer.

All interpretations are opinions based on inferences from electrical or other measurements and we cannot, and do not guarantee the accuracy or correctness of any interpretations, and we shall not, except in the case of gross or willful negligence on our part, be liable or responsible for any loss, costs, damages or expenses incurred or sustained by anyone resulting from any interpretations made by any of our officers, agents or employees. These interpretations are also subject to Clause 4 of our General Terms and Conditions as set out in our current Price Schedule.



COMPANY BRIDGE OIL LTD.
 FIELD EXPLORATION
 WELL MYLOR #1
 COUNTRY AUSTRALIA