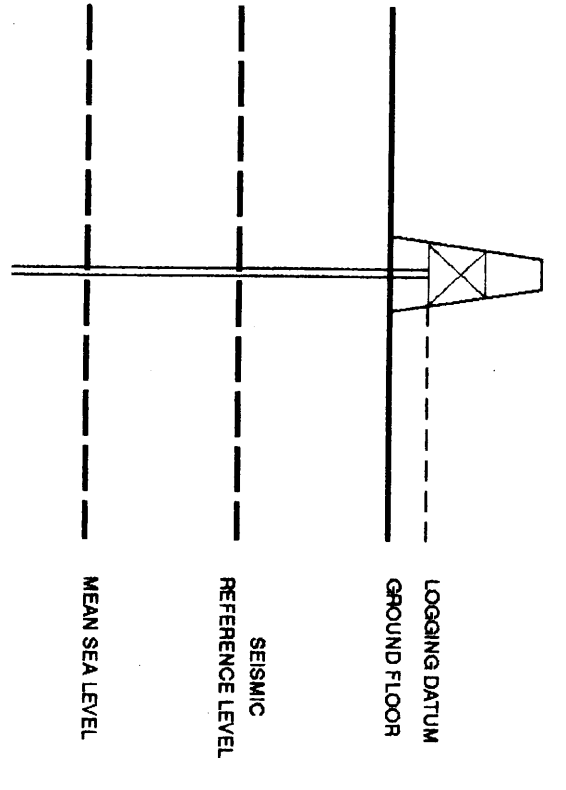


VERTICAL SEISMIC PROFILE

ZERO OFFSET VSP
 REVERSE POLARITY
 VSP AND GEOGRAM COMPOSITE
PLOT 7



Company: BRIDGE OIL LTD.
 Well: MYLOR #1
 Field: EXPLORATION
 Country: AUSTRALIA
 Reference No: SY/561029591024 Interval: 1920.00 to 2920.00
 Date Logged: 26-JUN-1994 Date Processed: 30-JUN-1994
 Location: 038 31 50 75' S 142 55 27 30' E
 Elevations: NB: 103.20 DF: 102.90 GL: 97.40
 Permanent Datum: MSL
 FIELD RECORDING: Engineer: J GARICA Location: GEA Program Version: 4.2
 COMPUTATION: Analyst: A WISSONQ Operator: SYJ Software: 20.1



ELEVATION ABOVE MEAN SEA LEVEL
 Logging Datum: 103.20
 Seismic Reference Datum: 0.00

Run	Date	Tool Type	SHD		Casing Str		Top		Bottom	
			Depth	SHD	Depth	SHD	Depth	SHD	Depth	SHD
1	26-06-94	DLL/DLH	6.5 IN				0 M		1922 M	

The well name, location and borehole reference data were furnished by the customer.
 All interpretations are opinions based on inferences from electrical or other measurements and we cannot, and do not guarantee the accuracy or correctness of any interpretations, and we shall not, except in the case of gross or willful negligence on our part, be liable or responsible for any loss, costs, damages or expense incurred or sustained by anyone resulting from any interpretations made by any of our officers, agents or employees. These interpretations are also subject to Clause 4 of our General Terms and Conditions as set out in our current Price Schedule.

WAVESHAPING
 WAVESHAPING DECONVOLUTION
 ZERO PHASE (5-60 HZ)
 ENHANCED UPGOING WAVEFIELD
 VERTICAL SCALE : 5 IN/SEC
 POLARITY (SEG.) : REVERSE

TRANSPROSED VSP + AGC
 500 MS AGC WINDOW

CORRIDOR STACK

CORRIDOR STACK + AGC
 800 MS AGC WINDOW

GEOGRAM 35 HZ. + AGC
 ZERO PHASE - REVERSE POLARITY

GEOGRAM 25 HZ. + AGC
 ZERO PHASE - REVERSE POLARITY

GEOGRAM 45 HZ. + AGC
 ZERO PHASE - REVERSE POLARITY

FORMATION MARKERS

INVERTED IMPEDANCE

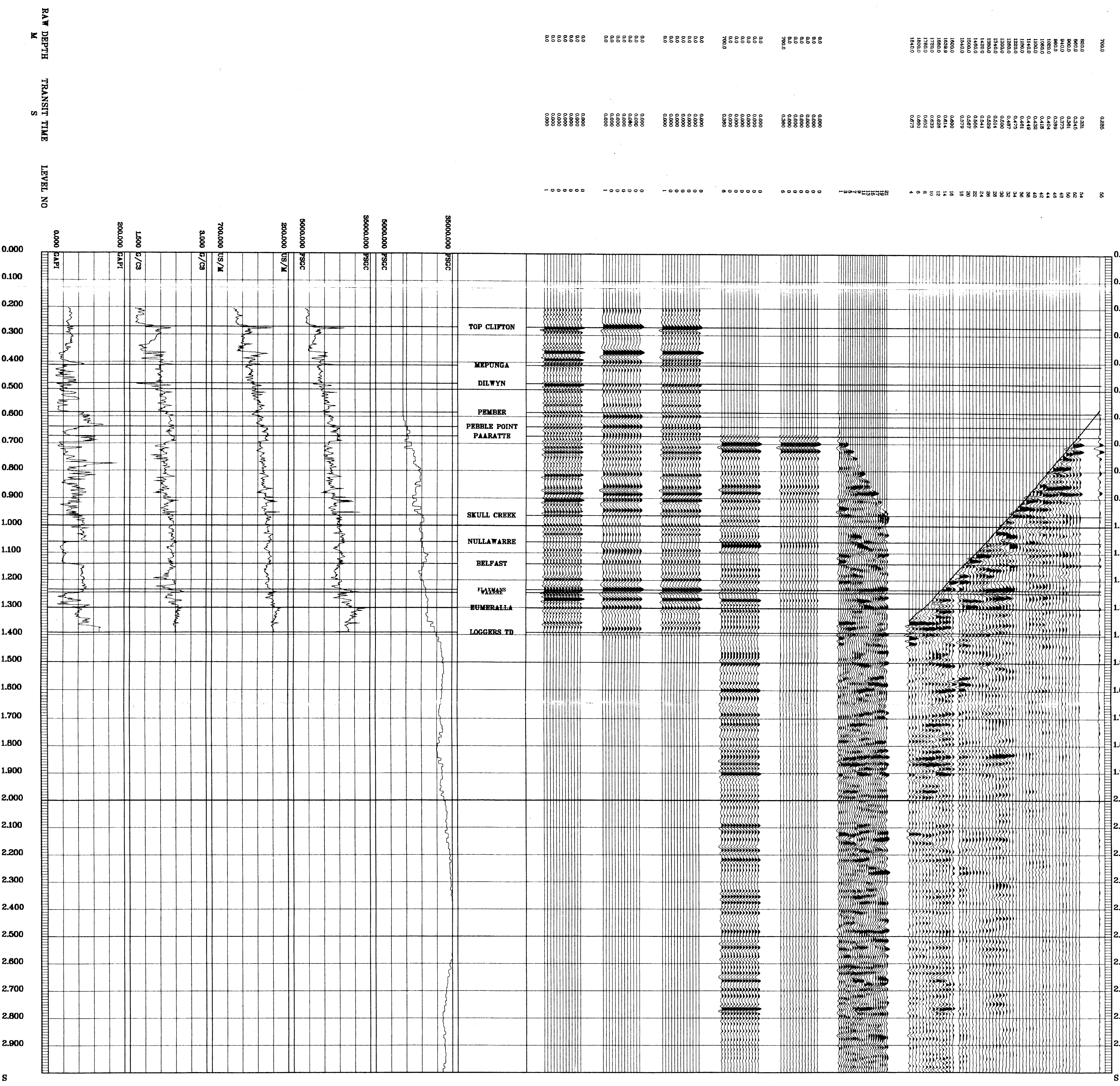
LOGGED IMPEDANCE

SONIC

DENSITY

GAMMA RAY

7000	0.285	95
8020	0.281	34
8000	0.281	35
7980	0.281	36
7960	0.281	37
7940	0.281	38
7920	0.281	39
7900	0.281	40
7880	0.281	41
7860	0.281	42
7840	0.281	43
7820	0.281	44
7800	0.281	45
7780	0.281	46
7760	0.281	47
7740	0.281	48
7720	0.281	49
7700	0.281	50
7680	0.281	51
7660	0.281	52
7640	0.281	53
7620	0.281	54
7600	0.281	55
7580	0.281	56
7560	0.281	57
7540	0.281	58
7520	0.281	59
7500	0.281	60
7480	0.281	61
7460	0.281	62
7440	0.281	63
7420	0.281	64
7400	0.281	65
7380	0.281	66
7360	0.281	67
7340	0.281	68
7320	0.281	69
7300	0.281	70
7280	0.281	71
7260	0.281	72
7240	0.281	73
7220	0.281	74
7200	0.281	75
7180	0.281	76
7160	0.281	77
7140	0.281	78
7120	0.281	79
7100	0.281	80
7080	0.281	81
7060	0.281	82
7040	0.281	83
7020	0.281	84
7000	0.281	85



COMPANY BRIDGE OIL LTD.
 FIELD EXPLORATION
 WELL MYLOR #1
 COUNTRY AUSTRALIA

