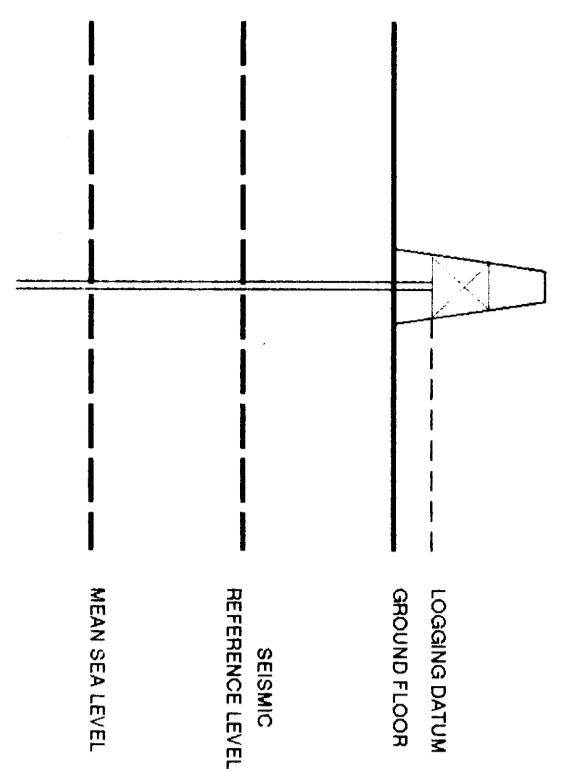


VERTICAL SEISMIC PROFILE

ZERO OFFSET VSP
NORMAL POLARITY
VSP AND GEORAM COMPOSITE
PLOT 6

Company: BRIDGE OIL LTD
Well: MYLOR #1
Field: EXPLORATION
Country: AUSTRALIA
Reference No: SJV561029561024
Interval: 1920.00 to 2920.00
Date Logged: 26-JUN-1994
Date Processed: 30-JUN-1994
Location: O38 31 50.75" S 142 55 27.80" E
Elevations: KB: 103.20 DF: 102.90 QL: 97.40
Permanent Datum: MSL
Depth Units: METERS
FIELD RECORDING: Engineer: J. GARCIA Location: OEA Program Version: 4.2
COMPUTATION: Analyst: A. BISSONO Chart: SVJ Bander: 215



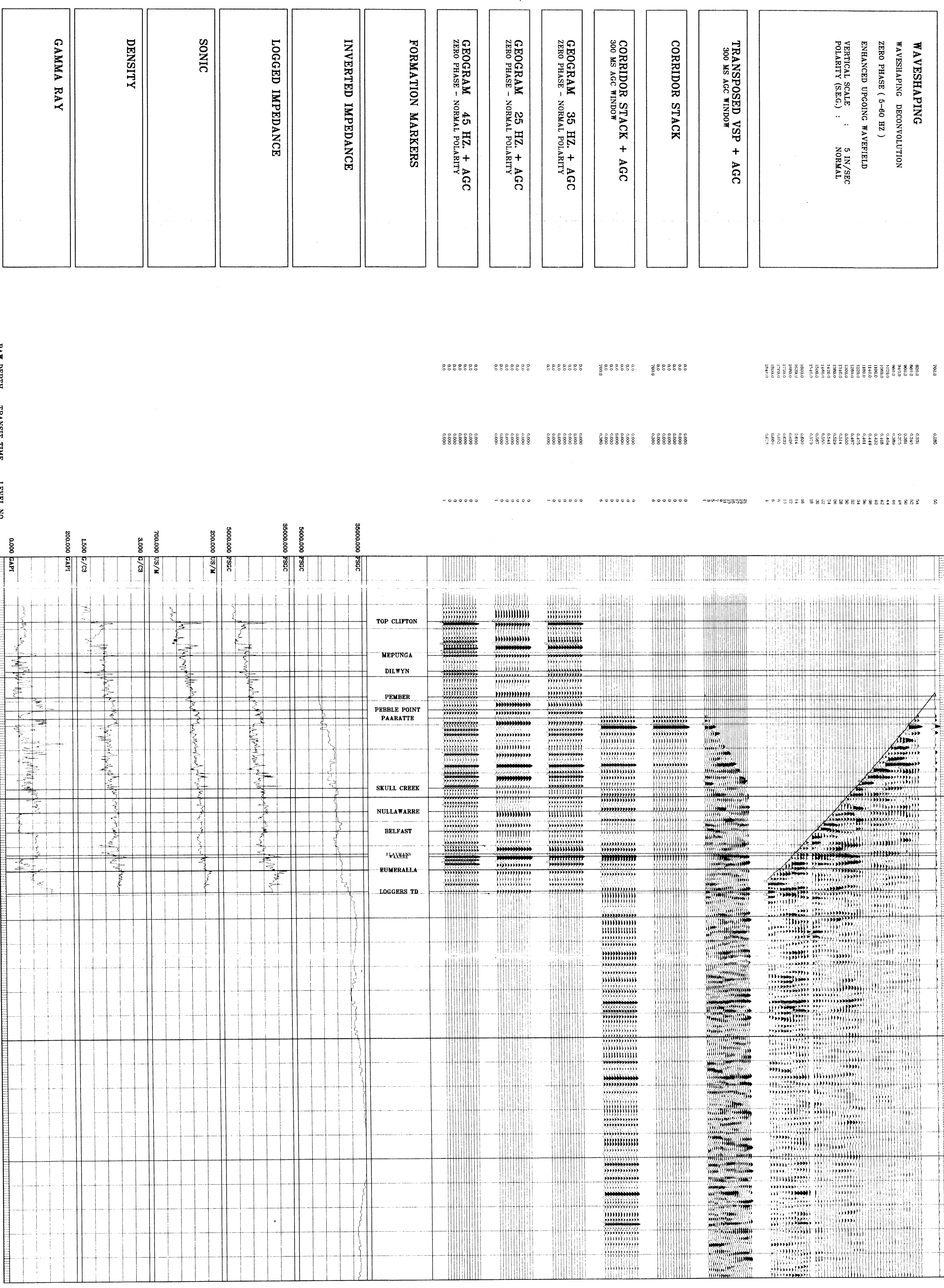
Total Number of Levels: 57
Depth Reference: SRD
Time Reference: SRD

Run	Date	Tool Type	Bit Size	Depth	Casing Size	Top Depth	Bottom Depth
1	26-06-94	DLL-DLL	8.5 IN	0 M	0 M	0 M	1822 M

FOLD HERE

The well name, location and borehole reference data were furnished by the customer

All interpretations are opinions based on inferences from electrical or other measurements and we cannot, and do not guarantee the accuracy or correctness of any interpretations, and we shall not, except in the case of gross or willful negligence on our part be liable or responsible for any loss, costs, damages or expenses incurred or sustained by anyone resulting from any interpretations made by any of our officers, agents or employees. These interpretations are also subject to Clause 4 of our General Terms and Conditions as set out in our current Price Schedule.



COMPANY BRIDGE OIL LTD.
FIELD EXPLORATION
WELL MYLOR #1
COUNTRY AUSTRALIA

