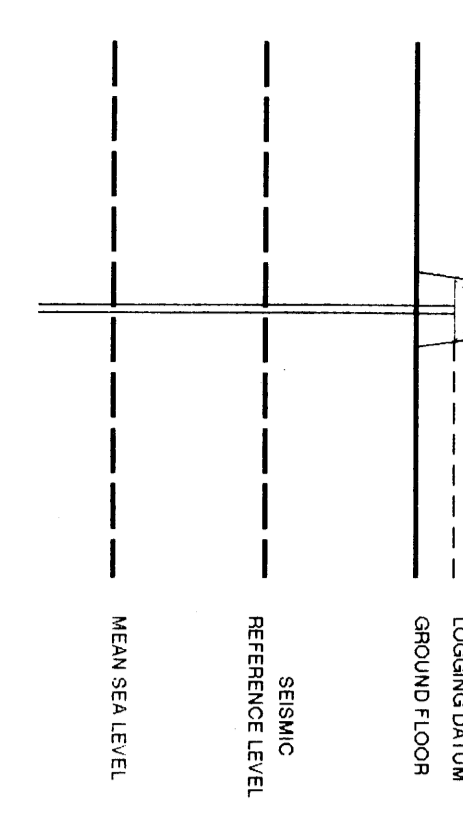


VERTICAL SEISMIC PROFILE

ZERO OFFSET VSP
WAVESHAPING AND CORRIDOR STACK
PLOT 5

Company: BRIDGE OIL LTD.
Well: MYLOR #1
Field: EXPLORATION
Country: AUSTRALIA
Reference No: SYL561023561024 Interval: 1920.00 to 2920.00
Date Logged: 26-JUN-1994 Date Processed: 30-JUN-1994
Location: 028 31' 50.75" S 142 55' 27.80" E
Elevations: KB: 103.20 DF: 102.90 QI: 97.40
Permanent Datum: MSL Depth Units: METRES
FIELD RECORDING: Logtype: J GARDON Location: GSA Program Version: 42.2
COMPUTATION: Analyst: A WISSBROCK Centre: SYD Station: 20.5
ELEVATION ABOVE MEAN SEA LEVEL



Total Number of Levels: 57

Depth Reference: SRD

Run	Date	Tool	Type	BR Size	Depth	Clearing Size	Top Depth	Bottom Depth
1	26-06-94	DL-LCL		8.5 IN		0 M	182.1 M	

Time Reference: SRD

VSP Run	Date	Gain	Offset	Elevation	Gain	Offset	Asym	Asym
1	26-06-94	66 AND 27 M	66 AND 27 M	2.6 AND 2.0 M BELOW QL	2.6 AND 2.0 M BELOW QL	0 AND 180	AND 180	AND 180

REMARKS

The well name, location and borehole reference data were furnished by the customer.

All interpretations are opinions based on references from electrical or other measurements and we cannot, and do not guarantee the accuracy or correctness of any interpretations, and we shall not, except in the case of gross or willful negligence on our part, be liable or responsible for any loss, costs, damages or expenses incurred or sustained by anyone resulting from any interpretations made by any of our officers, agents or employees. These interpretations are also subject to Clause 4 of our General Terms and Conditions as set out in our current Price Schedule.

*** TRANSPPOSED VSP + AGC ***
POLARITY (S.E.G.) : REVERSE

*** CORRIDOR STACK + AGC ***
AGC WINDOW : 300 MS
POLARITY (S.E.G.) : REVERSE

*** CORRIDOR STACK ***
VARYING - SELECTED CORRIDOR WINDOW
POLARITY (S.E.G.) : REVERSE

**** WAVESHAPING ****
WAVESHAPING DECONVOLUTION
ZERO PHASE
ENHANCED UPGOING WAVEFIELD
PROCESSING SEQUENCE:
MEDIAN STACK APPLIED
STATIC CORRECTION TO MSL: APPLIED
BAND PASS FILTER : 5-65 HZ
NORMALISATION GATE : 7/100 MS
TIME VARYING GAIN : 7/10**1.00
DOWNGOING WAVEFIELD SUBTRACTION
WAVESHAPING DECONVOLUTION:
5-60 HZ ZERO PHASE WAVELET
OPERATOR LENGTH : 1.00 S
PREWHITENING : 2 %
5 LEVEL ENHANCED UPGOING WAVEFIELD
VERTICAL SCALE : 5 IN/SEC
POLARITY (S.E.G.) : REVERSE

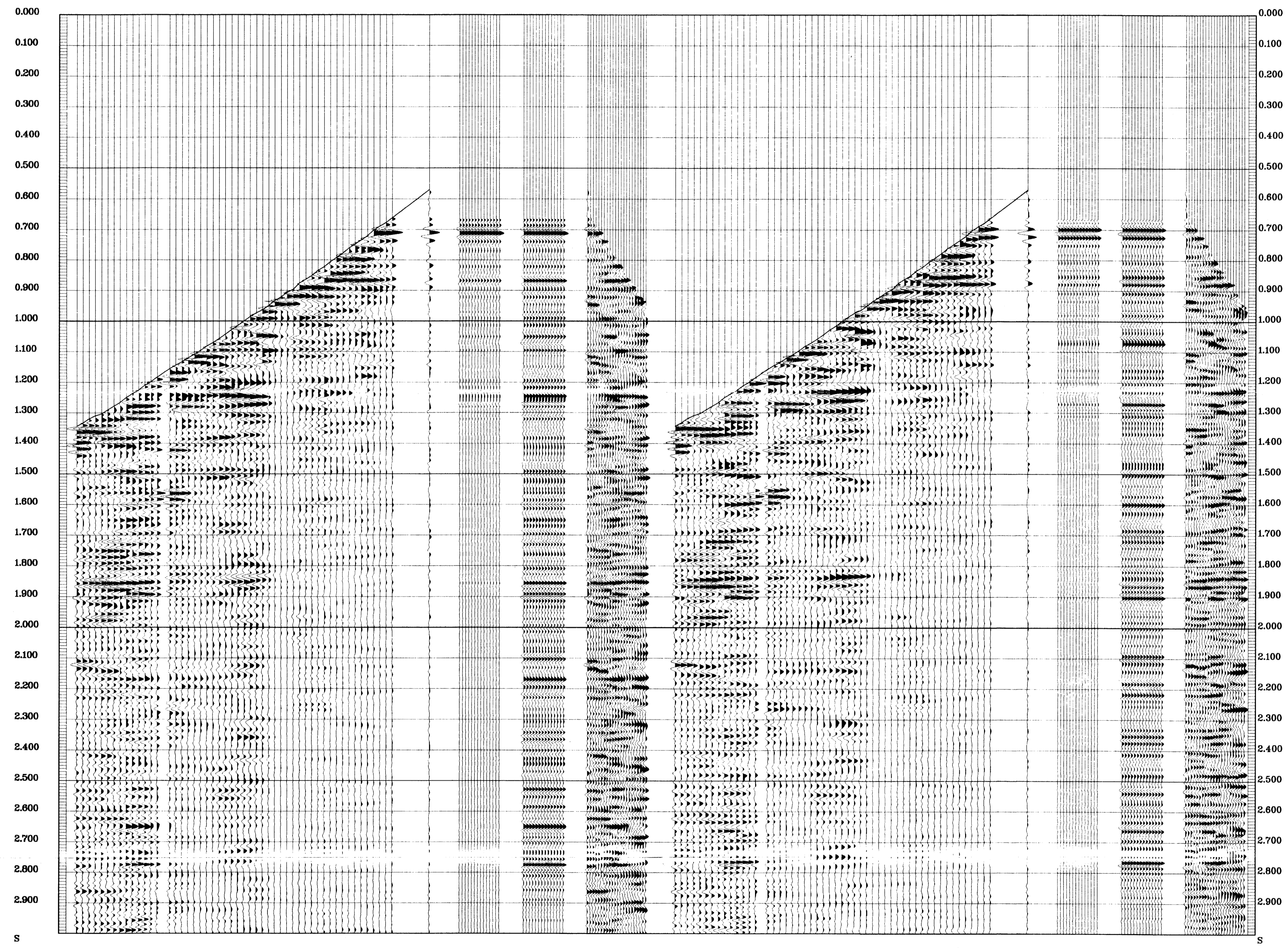
*** TRANSPPOSED VSP + AGC ***
POLARITY (S.E.G.) : NORMAL

*** CORRIDOR STACK + AGC ***
AGC WINDOW : 300 MS
POLARITY (S.E.G.) : NORMAL

*** CORRIDOR STACK ***
VARYING - SELECTED CORRIDOR WINDOW
POLARITY (S.E.G.) : NORMAL

**** WAVESHAPING ****
WAVESHAPING DECONVOLUTION
ZERO PHASE
ENHANCED UPGOING WAVEFIELD
PROCESSING SEQUENCE:
MEDIAN STACK APPLIED
STATIC CORRECTION TO MSL: APPLIED
BAND PASS FILTER : 5-65 HZ
NORMALISATION GATE : 7/100 MS
TIME VARYING GAIN : 7/10**1.00
DOWNGOING WAVEFIELD SUBTRACTION
WAVESHAPING DECONVOLUTION:
5-60 HZ ZERO PHASE WAVELET
OPERATOR LENGTH : 1.00 S
PREWHITENING : 2 %
5 LEVEL ENHANCED UPGOING WAVEFIELD
VERTICAL SCALE : 5 IN/SEC
POLARITY (S.E.G.) : NORMAL

RAW DEPTH M	TRUE VERTICAL DEPTH MSL	TRANSIT TIME S	LEVEL NO
794.0	794.0	0.286	50
800.0	798.8	0.291	49
810.0	793.6	0.296	48
820.0	788.4	0.301	47
830.0	783.2	0.306	46
840.0	778.0	0.311	45
850.0	772.8	0.316	44
860.0	767.6	0.321	43
870.0	762.4	0.326	42
880.0	757.2	0.331	41
890.0	752.0	0.336	40
900.0	746.8	0.341	39
910.0	741.6	0.346	38
920.0	736.4	0.351	37
930.0	731.2	0.356	36
940.0	726.0	0.361	35
950.0	720.8	0.366	34
960.0	715.6	0.371	33
970.0	710.4	0.376	32
980.0	705.2	0.381	31
990.0	700.0	0.386	30
1000.0	694.8	0.391	29
1010.0	689.6	0.396	28
1020.0	684.4	0.401	27
1030.0	679.2	0.406	26
1040.0	674.0	0.411	25
1050.0	668.8	0.416	24
1060.0	663.6	0.421	23
1070.0	658.4	0.426	22
1080.0	653.2	0.431	21
1090.0	648.0	0.436	20
1100.0	642.8	0.441	19
1110.0	637.6	0.446	18
1120.0	632.4	0.451	17
1130.0	627.2	0.456	16
1140.0	622.0	0.461	15
1150.0	616.8	0.466	14
1160.0	611.6	0.471	13
1170.0	606.4	0.476	12
1180.0	601.2	0.481	11
1190.0	596.0	0.486	10
1200.0	590.8	0.491	9
1210.0	585.6	0.496	8
1220.0	580.4	0.501	7
1230.0	575.2	0.506	6
1240.0	570.0	0.511	5
1250.0	564.8	0.516	4
1260.0	559.6	0.521	3
1270.0	554.4	0.526	2
1280.0	549.2	0.531	1



COMPANY BRIDGE OIL LTD.
FIELD EXPLORATION
WELL MYLOR #1
COUNTRY AUSTRALIA

