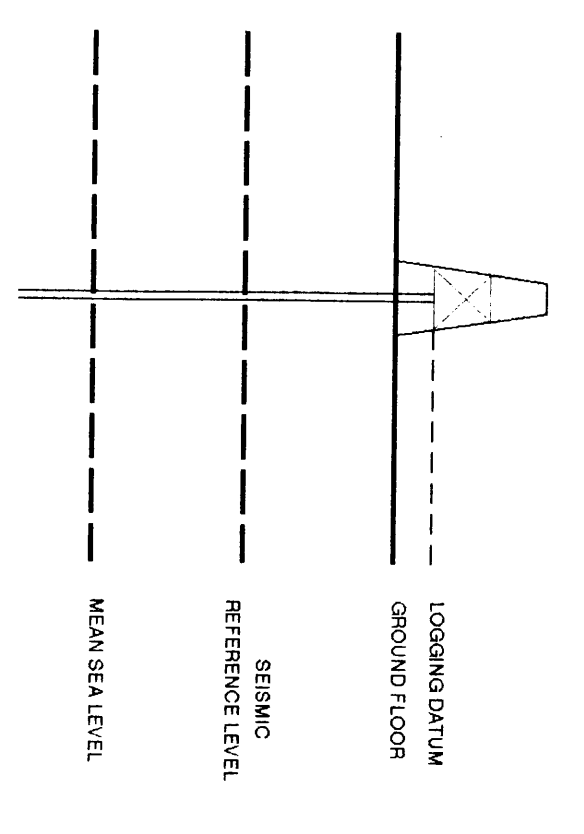


**VERTICAL
SEISMIC
PROFILE**

**ZERO OFFSET VSP
STACKED DATA
PLOT 1**

Company: BRIDGE OIL LTD.
Well: MYLOR #1
Field: EXPLORATION
Country: AUSTRALIA
Reference No: SVI 561023561024 Interval: 1920.00 to 292.00
Date Logged: 28-JUN-1994 Date Processed: 30-JUN-1994
Location: 038 31'50.75" S 142 55'27.80" E
Elevations: KB: 103.20 DF: 102.90 GL: 97.40
Permanent Datum: MSL Depth Units: METERS
FIELD RECEIVING: Engineer: J. GARCIA Location: Q23 Program Version: 402
COMPUTATION: Analyst: A. WILSON Camera: SVI Station: 20.5
Logging Datum: 103.20
Seismic Reference Datum: 0.00
ELEVATION ABOVE MEAN SEA LEVEL



Total Number of Levels		SRD		SRD	
Time Reference	SRD	SRD	SRD	SRD	SRD
Date	Tool Type	Bit Size	Casing Size	Top Depth	Bottom Depth
28-06-94	DLL-DLH	8.5 IN	0 M	1922 M	
1	28-06-94	Gun Chisel	Gun Chisel	Gun Chisel	Gun Chisel
		16 AND 27 M BELOW G.O.L.	2.8 AND 2.0 M BELOW G.O.L.	2.8 AND 2.0 M BELOW G.O.L.	0 AND 160 DEQARD 180 DEQ

The well name location and borehole reference data were furnished by the customer

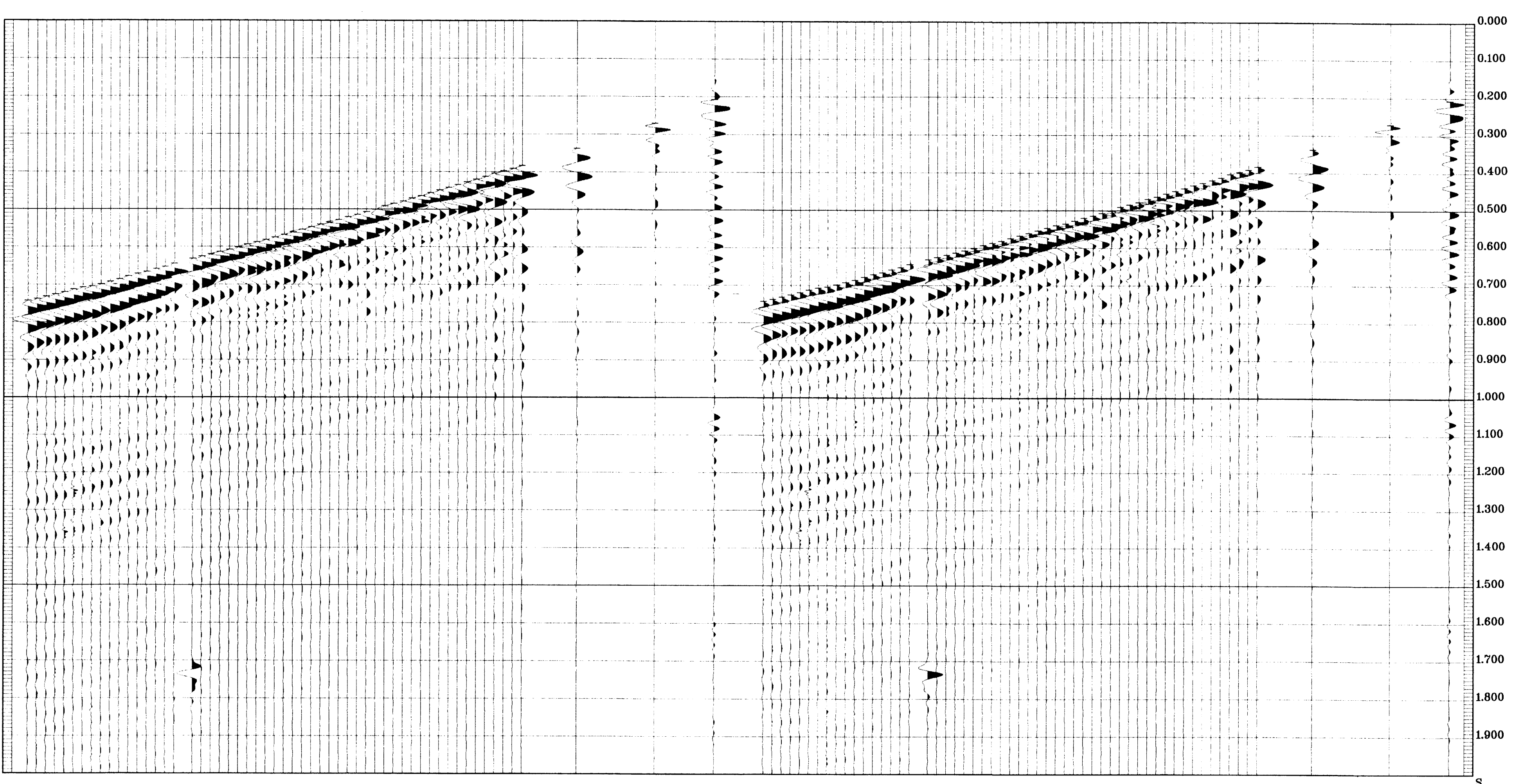
All interpretations are opinions based on inferences from electrical or other measurements and we cannot and do not guarantee the accuracy or correctness of any interpretations, and we shall not, except in the case of gross or willful negligence on our part, be liable or responsible for any loss, costs, damages or expenses incurred or sustained by anyone resulting from any interpretations made by any of our officers, agents or employees. These interpretations are also subject to Clause 4 of our General Terms and Conditions as set out in our current Price Schedule.

**** MEDIAN STACK ****
(DOWNHOLE DATA)
MEDIAN COHERENCY STACK OF THE DOWNHOLE COMPONENT
PROCESSING SEQUENCE:
MEDIAN STACK APPLIED
BANDPASS FILTER : 4 - 100 HZ
VERTICAL SCALE : 5 IN/SEC
POLARITY (S.E.G.) : NORMAL
TIMES REFERENCED TO ACCELEROMETER

**** MEDIAN STACK ****
(DOWNHOLE DATA)
MEDIAN COHERENCY STACK OF THE DOWNHOLE COMPONENT
PROCESSING SEQUENCE:
MEDIAN STACK APPLIED
BANDPASS FILTER : 4 - 100 HZ
VERTICAL SCALE : 5 IN/SEC
POLARITY (S.E.G.) : REVERSE
TIMES REFERENCED TO ACCELEROMETER

RAW DEPTH	TRUE VERTICAL DEPTH	TRANSIT TIME	LEVEL NO	MAX AMPLITUDE	MIN AMPLITUDE
400.0	398.4	0.208	57	32982.1	-31813.4
420.0	418.4	0.210	56	28799.3	-18484.2
440.0	438.4	0.212	55	11268.9	-10725.1
460.0	458.4	0.214	54	11077.7	-10707.0
480.0	478.4	0.216	53	10777.4	-10489.9
500.0	498.4	0.218	52	10484.4	-10272.0
520.0	518.4	0.220	51	10191.4	-10054.1
540.0	538.4	0.222	50	9900.5	-9836.2
560.0	558.4	0.224	49	9611.5	-9618.3
580.0	578.4	0.226	48	9324.5	-9400.4
600.0	598.4	0.228	47	9039.5	-9182.5
620.0	618.4	0.230	46	8756.5	-8964.6
640.0	638.4	0.232	45	8475.5	-8746.7
660.0	658.4	0.234	44	8196.5	-8528.8
680.0	678.4	0.236	43	7919.5	-8310.9
700.0	698.4	0.238	42	7644.5	-8093.0
720.0	718.4	0.240	41	7371.5	-7875.1
740.0	738.4	0.242	40	7100.5	-7657.2
760.0	758.4	0.244	39	6831.5	-7439.3
780.0	778.4	0.246	38	6564.5	-7221.4
800.0	798.4	0.248	37	6300.5	-7003.5
820.0	818.4	0.250	36	6039.5	-6785.6
840.0	838.4	0.252	35	5781.5	-6567.7
860.0	858.4	0.254	34	5526.5	-6349.8
880.0	878.4	0.256	33	5274.5	-6131.9
900.0	898.4	0.258	32	5025.5	-5914.0
920.0	918.4	0.260	31	4779.5	-5696.1
940.0	938.4	0.262	30	4536.5	-5478.2
960.0	958.4	0.264	29	4296.5	-5260.3
980.0	978.4	0.266	28	4059.5	-5042.4
1000.0	998.4	0.268	27	3825.5	-4824.5
1020.0	1018.4	0.270	26	3594.5	-4606.6
1040.0	1038.4	0.272	25	3367.5	-4388.7
1060.0	1058.4	0.274	24	3144.5	-4170.8
1080.0	1078.4	0.276	23	2925.5	-3952.9
1100.0	1098.4	0.278	22	2711.5	-3735.0
1120.0	1118.4	0.280	21	2502.5	-3517.1
1140.0	1138.4	0.282	20	2298.5	-3299.2
1160.0	1158.4	0.284	19	2099.5	-3081.3
1180.0	1178.4	0.286	18	1905.5	-2863.4
1200.0	1198.4	0.288	17	1717.5	-2645.5
1220.0	1218.4	0.290	16	1534.5	-2427.6
1240.0	1238.4	0.292	15	1357.5	-2209.7
1260.0	1258.4	0.294	14	1186.5	-1991.8
1280.0	1278.4	0.296	13	1021.5	-1773.9
1300.0	1298.4	0.298	12	862.5	-1556.0
1320.0	1318.4	0.300	11	710.5	-1338.1
1340.0	1338.4	0.302	10	565.5	-1120.2
1360.0	1358.4	0.304	9	428.5	-902.3
1380.0	1378.4	0.306	8	299.5	-684.4
1400.0	1398.4	0.308	7	178.5	-466.5
1420.0	1418.4	0.310	6	65.5	-248.6
1440.0	1438.4	0.312	5		-30.7
1460.0	1458.4	0.314	4		
1480.0	1478.4	0.316	3		
1500.0	1498.4	0.318	2		
1520.0	1518.4	0.320	1		

RAW DEPTH	TRUE VERTICAL DEPTH	TRANSIT TIME	LEVEL NO	MAX AMPLITUDE	MIN AMPLITUDE
200.0	198.4	0.108	57	32982.1	-31813.4
220.0	218.4	0.110	56	28799.3	-18484.2
240.0	238.4	0.112	55	11268.9	-10725.1
260.0	258.4	0.114	54	11077.7	-10707.0
280.0	278.4	0.116	53	10777.4	-10489.9
300.0	298.4	0.118	52	10484.4	-10272.0
320.0	318.4	0.120	51	10191.4	-10054.1
340.0	338.4	0.122	50	9900.5	-9836.2
360.0	358.4	0.124	49	9611.5	-9618.3
380.0	378.4	0.126	48	9324.5	-9400.4
400.0	398.4	0.128	47	9039.5	-9182.5
420.0	418.4	0.130	46	8756.5	-8964.6
440.0	438.4	0.132	45	8475.5	-8746.7
460.0	458.4	0.134	44	8196.5	-8528.8
480.0	478.4	0.136	43	7919.5	-8310.9
500.0	498.4	0.138	42	7644.5	-8093.0
520.0	518.4	0.140	41	7371.5	-7875.1
540.0	538.4	0.142	40	7100.5	-7657.2
560.0	558.4	0.144	39	6831.5	-7439.3
580.0	578.4	0.146	38	6564.5	-7221.4
600.0	598.4	0.148	37	6300.5	-7003.5
620.0	618.4	0.150	36	6039.5	-6785.6
640.0	638.4	0.152	35	5781.5	-6567.7
660.0	658.4	0.154	34	5526.5	-6349.8
680.0	678.4	0.156	33	5274.5	-6131.9
700.0	698.4	0.158	32	5025.5	-5914.0
720.0	718.4	0.160	31	4779.5	-5696.1
740.0	738.4	0.162	30	4536.5	-5478.2
760.0	758.4	0.164	29	4296.5	-5260.3
780.0	778.4	0.166	28	4059.5	-5042.4
800.0	798.4	0.168	27	3825.5	-4824.5
820.0	818.4	0.170	26	3594.5	-4606.6
840.0	838.4	0.172	25	3367.5	-4388.7
860.0	858.4	0.174	24	3144.5	-4170.8
880.0	878.4	0.176	23	2925.5	-3952.9
900.0	898.4	0.178	22	2711.5	-3735.0
920.0	918.4	0.180	21	2502.5	-3517.1
940.0	938.4	0.182	20	2298.5	-3299.2
960.0	958.4	0.184	19	2099.5	-3081.3
980.0	978.4	0.186	18	1905.5	-2863.4
1000.0	998.4	0.188	17	1717.5	-2645.5
1020.0	1018.4	0.190	16	1534.5	-2427.6
1040.0	1038.4	0.192	15	1357.5	-2209.7
1060.0	1058.4	0.194	14	1186.5	-1991.8
1080.0	1078.4	0.196	13	1021.5	-1773.9
1100.0	1098.4	0.198	12	862.5	-1556.0
1120.0	1118.4	0.200	11	710.5	-1338.1
1140.0	1138.4	0.202	10	565.5	-1120.2
1160.0	1158.4	0.204	9	428.5	-902.3
1180.0	1178.4	0.206	8	299.5	-684.4
1200.0	1198.4	0.208	7	178.5	-466.5
1220.0	1218.4	0.210	6	65.5	-248.6
1240.0	1238.4	0.212	5		-30.7
1260.0	1258.4	0.214	4		
1280.0	1278.4	0.216	3		
1300.0	1298.4	0.218	2		
1320.0	1318.4	0.220	1		



COMPANY BRIDGE OIL LTD.
FIELD EXPLORATION
WELL MYLOR #1
COUNTRY AUSTRALIA

