

Plate 5: 1835 metres depth

Reflected Light

Organic matter in this field of view consists largely of detrital inertinite (inertodetrinite).

Field dimensions: 0.26 x 0.53 mm.

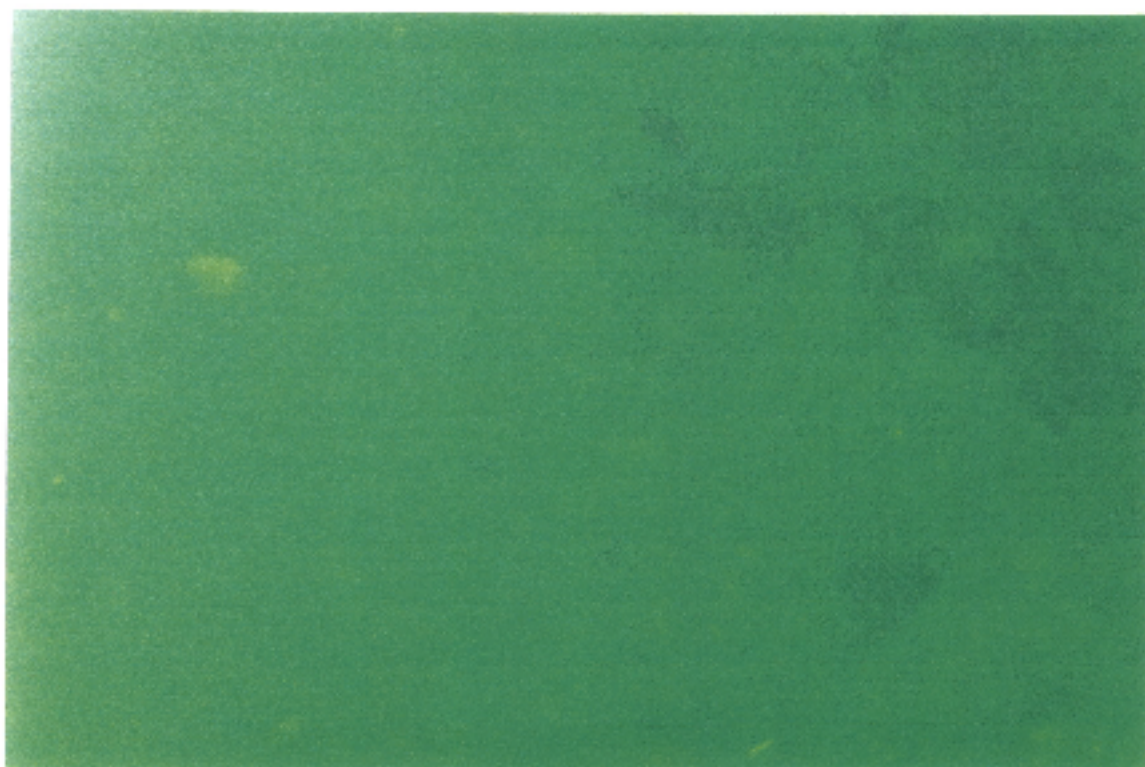


Plate 6: 1835 metres depth

Fluorescence Mode

The low abundance of liptinite is evident in this plate with only trace liptodetrinite being present.

DEPT. NAT. RES & ENV



PE906754