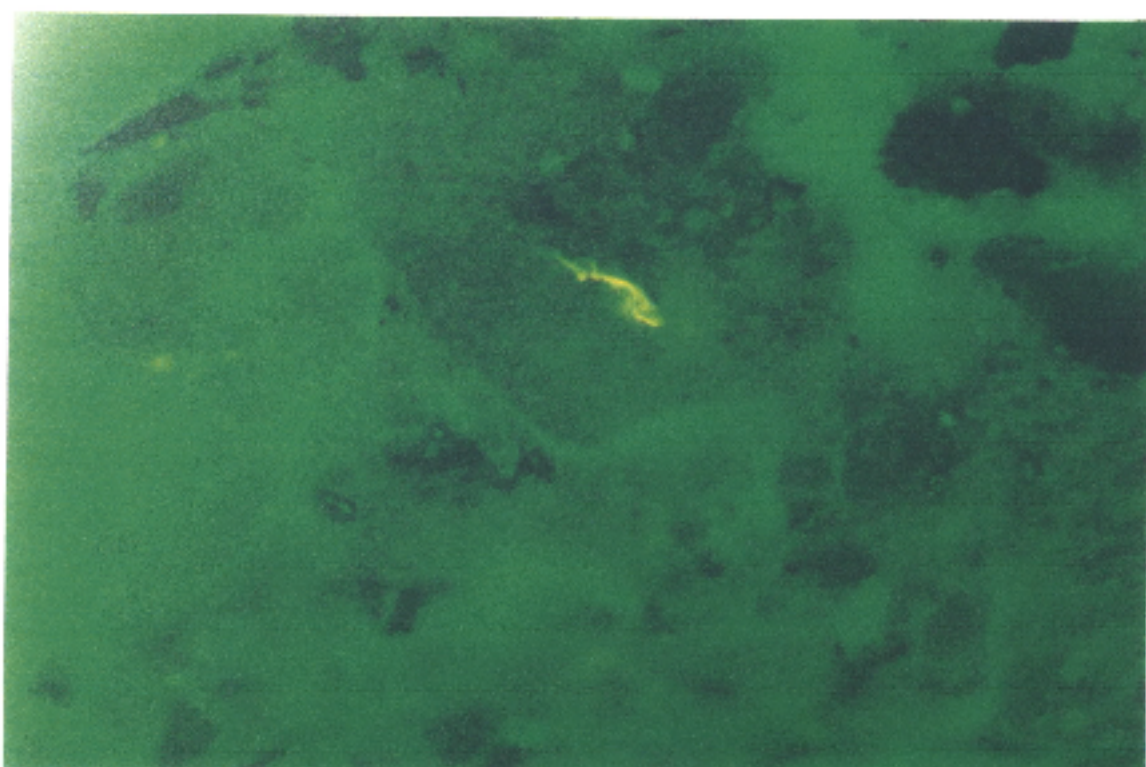


**Plate 3:** 1744 metres depth

Reflected Light

Organic matter in this SWC consists largely of inertinite (grey). Small detrital vitrinite is also present in this sample.

Field dimensions: 0.26 x 0.53 mm.



**Plate 4:** 1744 metres depth

Fluorescence Mode

Phytoplankton and litodetrinite are identified in fluorescence mode.

