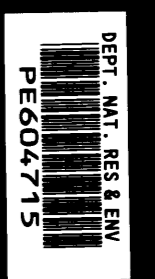


# SEISMIC CALIBRATION LOG

(Adjusted Continuous Velocity Log)



Company: GFE RESOURCES LTD.

Well: LANGLEY #1

Field: EXPLORATION

Country: AUSTRALIA

Reference No: SVJ-561022 Interval: 2008.00 to 350.00

Date Logged: 03-JUN-1994 Date Processed: 15-JUN-1994

Location: 038 59' 51.089" S 142 56' 10.625" E

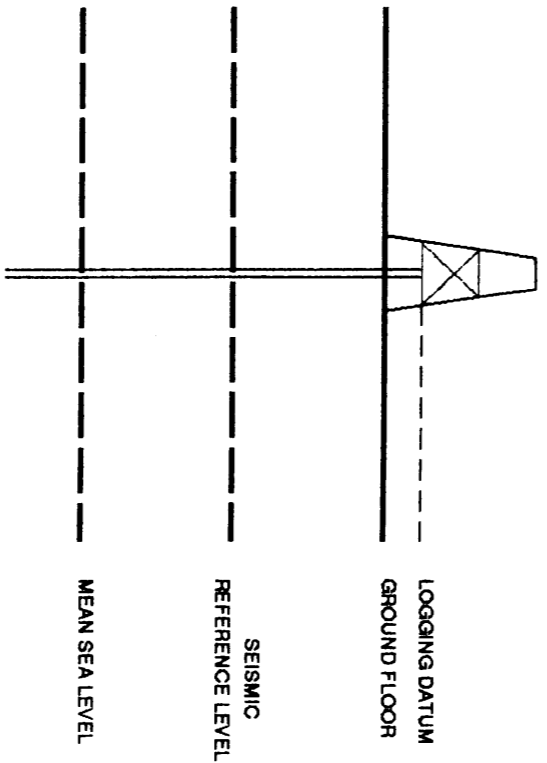
Elevations: KB: 69.70 DF: 69.30 GL: 64.00

Permanent Datum: MSL Depth Units: METRES

ELEVATION ABOVE MEAN SEA LEVEL

Logging Datum: 69.70

Seismic Reference Datum: 0.00



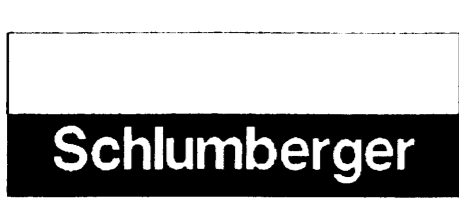
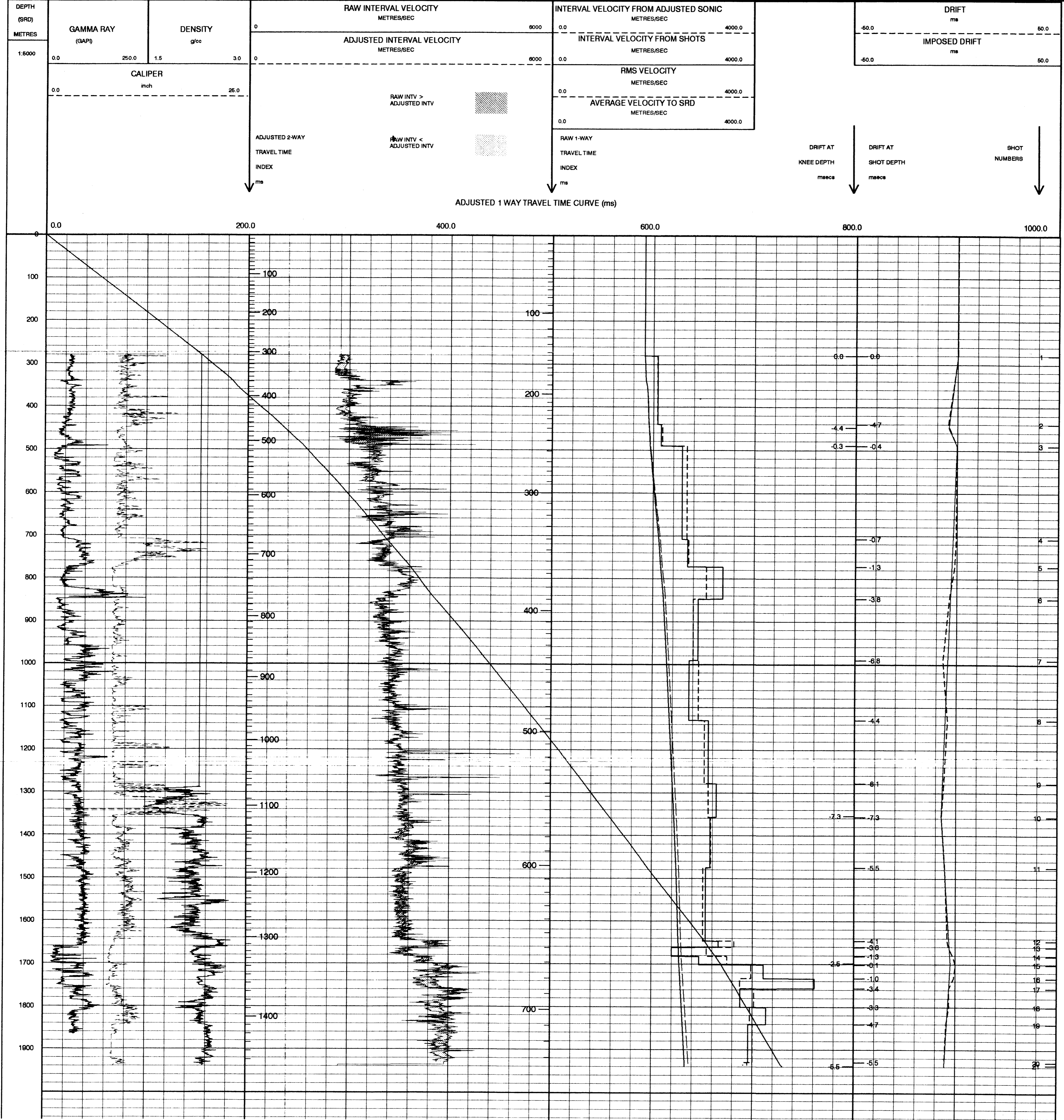
Total Number of Levels: 20

Run	Date	Tool Type	SRD	SRD	SRD	SRD	SRD
1	03-06-94	DL-AS	8.8 IN	0 M	136.5 DRG	2002 M	2008 M
2	03-06-94	LD-CNL	8.8 IN	136.5 M	2002 M	2008 M	2008 M
3	04-06-94	22 M	2 M BELOW TD	136.5 DRG	2002 M	2008 M	2008 M

REFERENCES

The well name, location and borehole reference data were furnished by the customer.

All interpretations are opinions based on inferences from electrical or other measurements and we cannot, and do not guarantee the accuracy or correctness of any interpretations, and we shall not, except in the case of gross or willful negligence on our part, be liable or responsible for any loss, costs, damages or expenses incurred or sustained by anyone resulting from any interpretations made by any of our officers, agents or employees. These interpretations are also subject to Clause 4 of our General Terms and Conditions as set out in our current Price Schedule.



COMPANY GFE RESOURCES LTD.  
FIELD EXPLORATION  
WELL LANGLEY #1  
COUNTRY AUSTRALIA