

Enclosure 9
Schlumberger

LANGLEY #1
SIDEWALL CORES
RUN #1

DEPT. MNT. RES. & ENV.
PE900954

COMPANY: GFF Resources Ltd. WELL: Langley #1
FIELD: Exploration RIG: Century #11 STATE: Victoria
LOG MEASURED FROM: KI ELEV: 69.7 M ABOVE PERM. DATUM
DATE: 05-JUN-1994
DEPTH DILLER: 2006.0 M
DEPTH LOGGER (SCH): 2007.0 M
BIT SIZE: 1.274" @ 2006.0 M
Casing-Diameter: 8.50" @ 194.4 M
Casing-Logger: 3333.5 M
Type Fluid in Hole: KCl Polymer
Visc: 9.35 LB/C 7.1 C.S.
pH: 9.3
Source of Sample: LITONLINE
Pm @ Meas. Temp: 4.21 CHMM @ 22.0 DEGC
Rm @ Meas. Temp: 3.7 CHMM @ 14.0 DEGC
Rm @ Meas. Temp: 7.58 CHMM @ 16.0 DEGC
Source: Pm @ Meas. Temp: PHESS
Pm @ BHT: 196 CHMM @ 73.3 DEGC
M-Logger on Bottom: 0.30 04.06.1994
M-Logger on Surface: 0.30 04.06.1994
Equip. Location: 73.3 DEGC
Recorded By: M Walsby/B Taylor
Witnessed By: M Walsby/B Taylor

All interpretations are opinions based on inferences from electrical or other measurements and we cannot, and do not guarantee the accuracy or correctness of any interpretations, and we shall not, except in the case of gross or willful negligence on our part, be liable or responsible for any loss, costs, damages or expenses incurred or sustained by anyone resulting from any interpretations made by any of our officers, agents or employees. These interpretations are also subject to Clause 4 of our General Terms and Conditions as set out in our current Price Schedule.

Run No.	11
Service Order No.	
Drilling Fluid Level	
Salinity	17700.0 PPM
Rmf @ BHT	130 CHMM @ 73.3 DEGC
Rmc @ BHT	130 CHMM @ 73.3 DEGC
Logging Speed	1800.0 F/HR
EQUIPMENT DATA	
Tool Number 1	GFC-A 108
Tool Number 2	GFK-A 64
Tool Number 3	GPD-A 1046
Tool Number 4	CST-C 2630
Tool Number 5	CST-Z 2650
Tool Number 6	
Tool Number 7	
Tool Number 8	
Tool Number 9	
Tool Number 10	
Tool Number 11	
Tool Number 12	

REMARKS:
Correlated to DLL-MSFL-GR-SP run #: 03-06-994
Attempted 60 cores with
10 gram charges with combo bullets
53 cores recovered
4 bullets lost at 1990,1882,1876.5,1438
3 bullets misfired

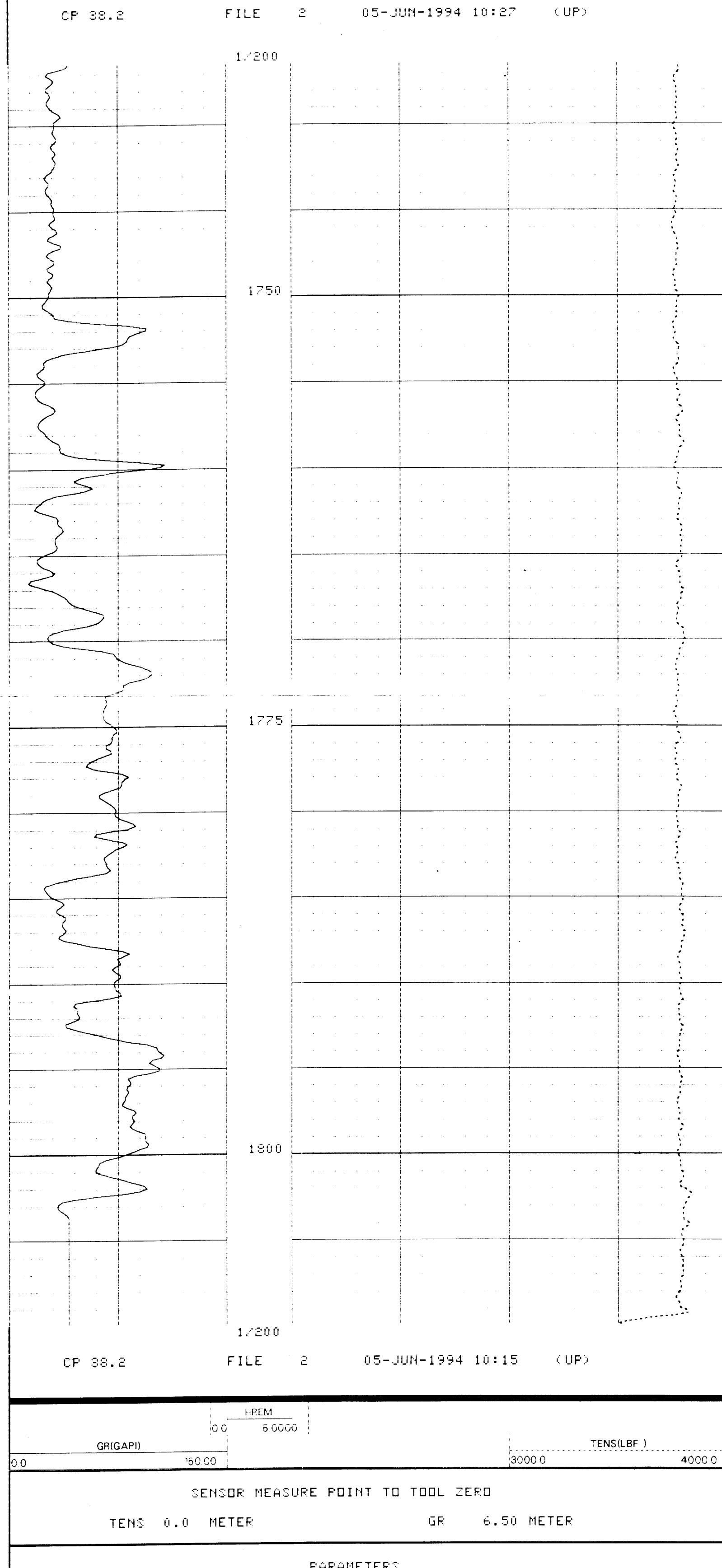
CORE SUMMARY

SHOT SUMMARY LISTING PERFORMED 05-JUN-1994 12:45

SHOT	STATUS	DEPTH	TENSION
1	FIRED	1990.1	299.5
2	FIRED	1989.0	570.5
3	FIRED	1969.0	545.5
4	FIRED	1957.0	155.1
5	FIRED	1924.5	1284.0
6	FIRED	1884.0	519.5
7	FIRED	1882.0	1364.0
8	FIRED	1878.4	661.5
9	FIRED	1875.6	1699.0
10	FIRED	1870.0	134.5
11	FIRED	1855.5	108.1
12	FIRED	1853.1	759.0
13	FIRED	1836.5	919.5
14	FIRED	1827.0	859.7
15	FIRED	1825.5	836.0
16	FIRED	1824.0	1275.0
17	FIRED	1822.5	355.7
18	FIRED	1821.0	944.0
19	FIRED	1813.4	1110.0
20	FIRED	1814.4	1065.0
21	FIRED	1810.5	1285.0
22	FIRED	1808.0	1261.0
23	FIRED	1804.5	702.0
24	FIRED	1803.5	970.0
25	FIRED	1802.0	238.0
26	FIRED	1799.9	594.0
27	FIRED	1798.0	245.8
28	FIRED	1795.0	208.0
29	FIRED	1789.0	625.0
30	FIRED	1784.0	459.2
31	FIRED	1783.0	459.0
32	FIRED	1781.0	741.0
33	FIRED	1778.5	443.7
34	FIRED	1776.4	553.0
35	FIRED	1772.0	586.5
36	FIRED	1770.0	985.5
37	FIRED	1768.2	648.0
38	FIRED	1733.5	537.0
39	FIRED	1732.0	251.7
40	FIRED	1729.5	1006.0
41	FIRED	1728.0	720.5
42	FIRED	1718.0	565.0
43	FIRED	1712.5	613.5
44	FIRED	1701.0	603.5
45	FIRED	1692.1	221.7
46	FIRED	1676.9	573.0
47	FIRED	1634.0	545.0
48	FIRED	1579.0	615.0
49	FIRED	1541.0	235.7
50	FIRED	1522.0	220.2
51	FIRED	1518.5	224.2
52	FIRED	1516.0	561.0
53	FIRED	1438.0	1842.0
54	FIRED	1325.5	249.2
55	FIRED	1325.0	1851.0
56	FIRED	1291.0	738.5
57	FIRED	1237.0	251.5
58	FIRED	916.0	394.7
59	FIRED	895.1	873.5
60	FIRED	836.0	265.2

DEPTH UNITS : METE BIT SIZE : 8.500 IN
RING TYPE : LAR./SMA BULLET TYPE : COMBINATION
POWDER LOAD : 10.00 G POWDER TYPE : WEST
CP 38.2 FILE 3 05-JUN-1994 12:44 (UP)

BEFORE SURVEY CORRELATION



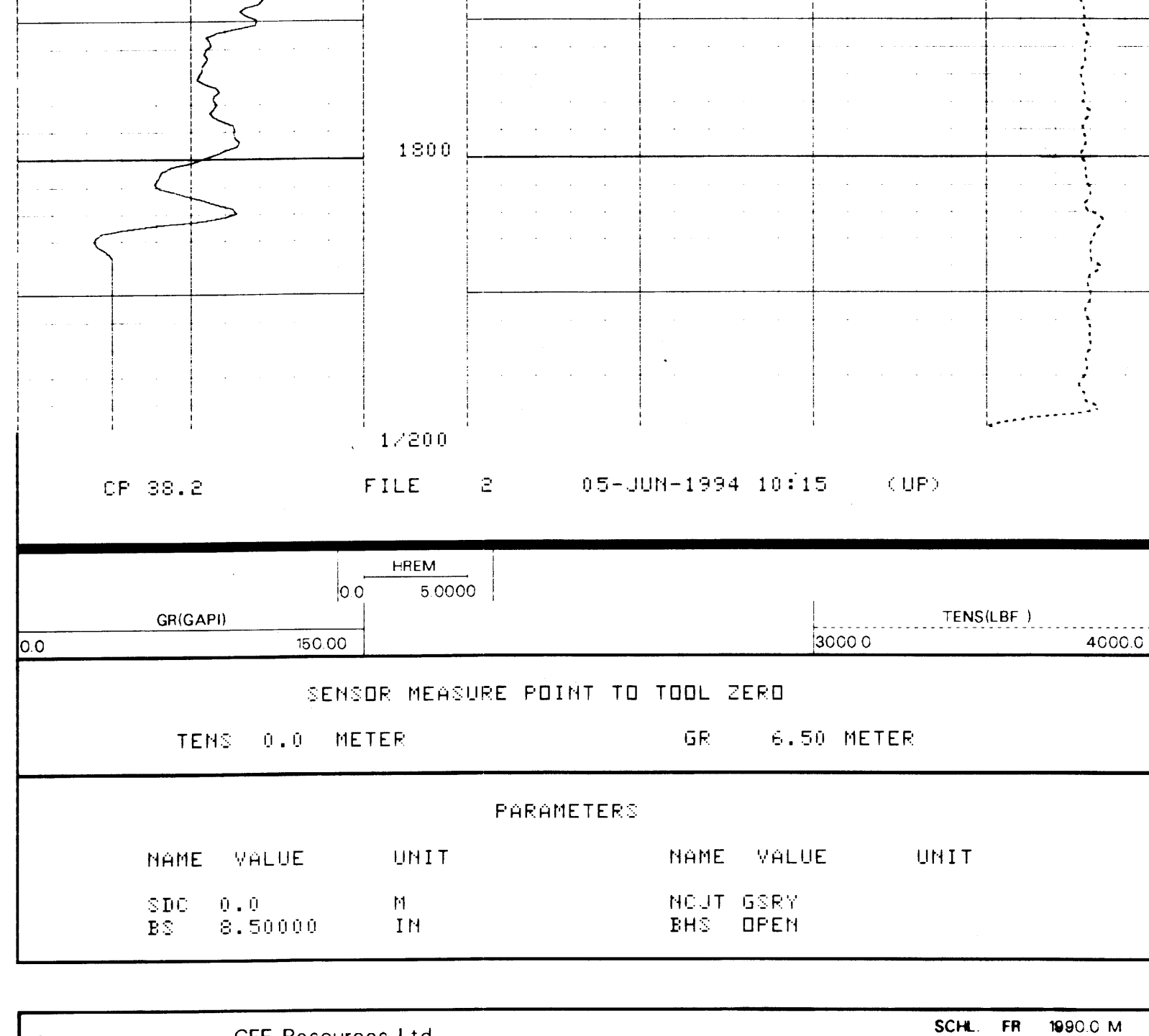
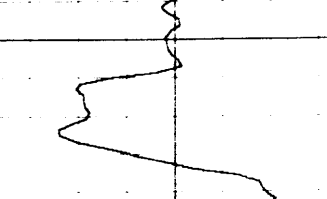
SENSOR MEASURE POINT TO TOOL ZERO
TENS 0.0 METER GR 6.50 METER

PARAMETERS

NAME	VALUE	UNIT	NAME	VALUE	UNIT
SDC	0.0	M	NCJT	GSRV	
BS	8.50000	IN	BHS	OPEN	

COMPANY: GFF Resources Ltd. WELL: Langley #1
FIELD: Exploration RIG: Century #11 STATE: Victoria
SCHL. FR: 1990.0 M
SCHL. TD: 2007.0 M
DLRL. TD: 2006.0 M
Elev: KB 69.7 M
DF: 69.3 M
GL: 64.0 M

LANGLEY #1
SIDEWALL CORES
RUN #1



SENSOR MEASURE POINT TO TOOL ZERO
TENS 0.0 METER GR 6.50 METER

PARAMETERS

NAME	VALUE	UNIT	NAME	VALUE	UNIT
SDC	0.0	M	NCJT	GSRV	
BS	8.50000	IN	BHS	OPEN	

COMPANY: GFF Resources Ltd. WELL: Langley #1
FIELD: Exploration RIG: Century #11 STATE: Victoria
SCHL. FR: 1990.0 M
SCHL. TD: 2007.0 M
DLRL. TD: 2006.0 M
Elev: KB 69.7 M
DF: 69.3 M
GL: 64.0 M

LANGLEY #1
SIDEWALL CORES
RUN #1

