

Langley #1
Exploration
Century #11
STATE Victoria

COMPANY GFE Resources Ltd.
WELL Langley #1
FIELD Exploration
RIG Century #11

LOCATION PPL1
X-688918.8 Y-8726082.3
Elev. 69.7 M
API SERIAL NO. NSL
SEC. NSL
TWP. 00 M
RANGE 42 56 10 25 S
MUTUAL REFERENCE
DLI-MSFL-GR-SP
SHEED-GR
CST-GR
Elev.: K: 69.7 M
D.F.: 69.3 M
Q.L.: 64.0 M

Permanent Datum
Log Measured From
Drilling Measured From
Date 3-06-94

Run No. 1
Depth (m) 2000.0 M
Depth Logger (Sens.) 2000.0 M
Top Log Interval 1000.0 M
Clearing-Depth 9 6/8 @ 334.4 M

Run No. 1
Service Order No.
Drilling Fluid Level
Salinity 17700.0 PPM
Run # BHT 135 OHMM @ 70.0 DEGC
Run # BHT 311 OHMM @ 70.0 DEGC
Logging Speed 1800.0 F/HR

EQUIPMENT DATA
Tool Number 1 TCC-B 775
Tool Number 2 SDC-SA 421
Tool Number 3 TCM-AB 24
Tool Number 4 CNC-NA 360
Tool Number 5 NSR-F 211
Tool Number 6 NSR-GB 2371
Tool Number 7 NSR-E 782
Tool Number 8 DRS-C 1935
Tool Number 9 PDHL-2824
Tool Number 10 PGB-G 2802
Tool Number 11 GSR-J 7047
Tool Number 12 AMS

REMARKS
Correlated to DLL-MSFL-AS-GR-SP RUN #1 03-06-94
Tool run centralized with CNT bowstring and LDT caliper arm.
No barite in mud
Tool stuck at 1414 m LDT caliper closed and LMT applied.
Stretch correction of 1 meter applied to depth.

The well name, location and borehole reference data were furnished by the customer.

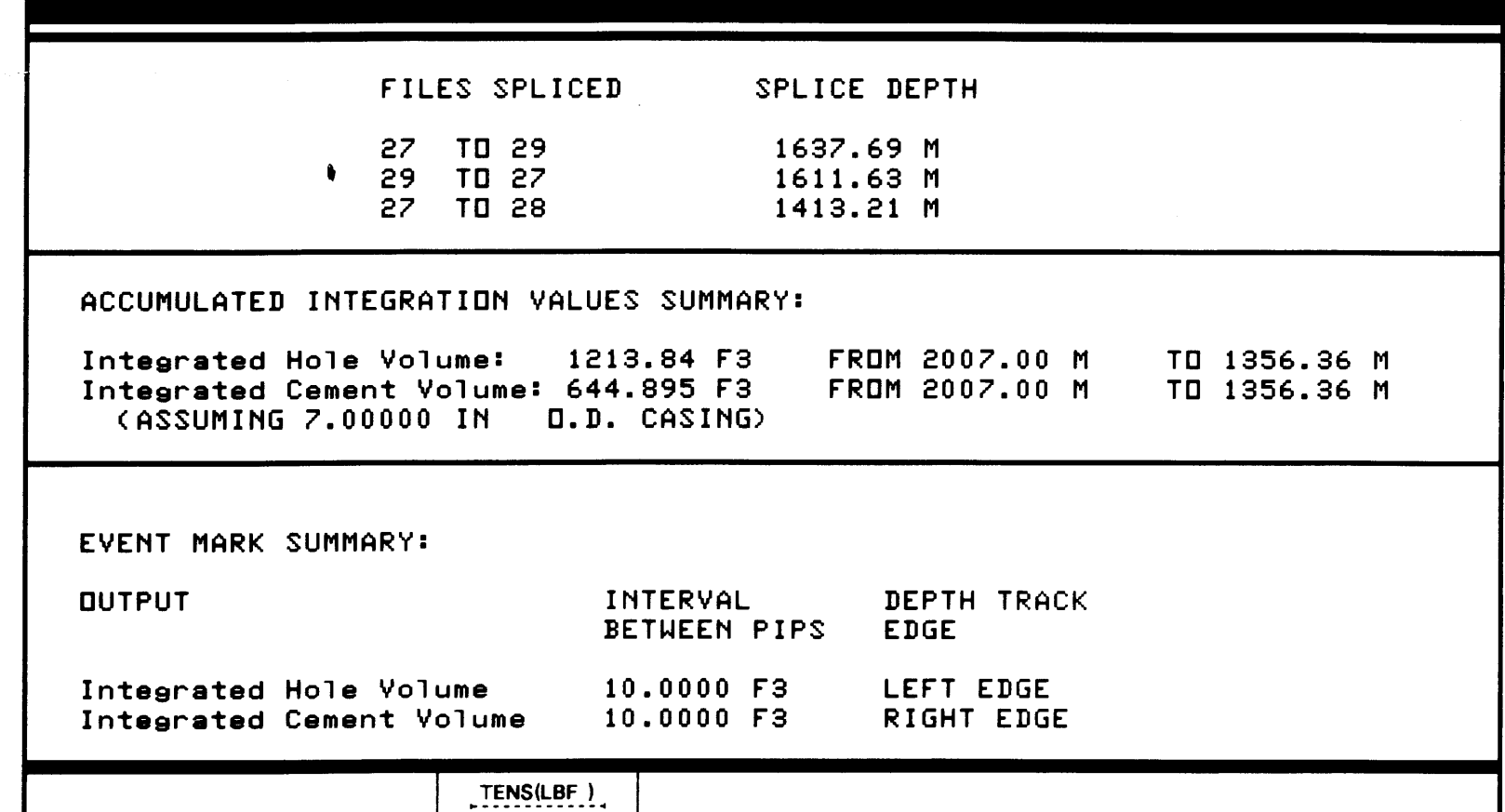
All interpretations are opinions based on inferences from electrical or other measurements and we cannot, and do not guarantee the accuracy or correctness of any interpretations, and we shall not, except in the case of gross or willful negligence on our part, be liable or responsible for any loss, costs, damages or expenses incurred or sustained by anyone resulting from any interpretations made by any of our officers, agents or employees. These interpretations are also subject to Clause 4 of our General Terms and Conditions as set out in our current Price Schedule.

MAIN LOG

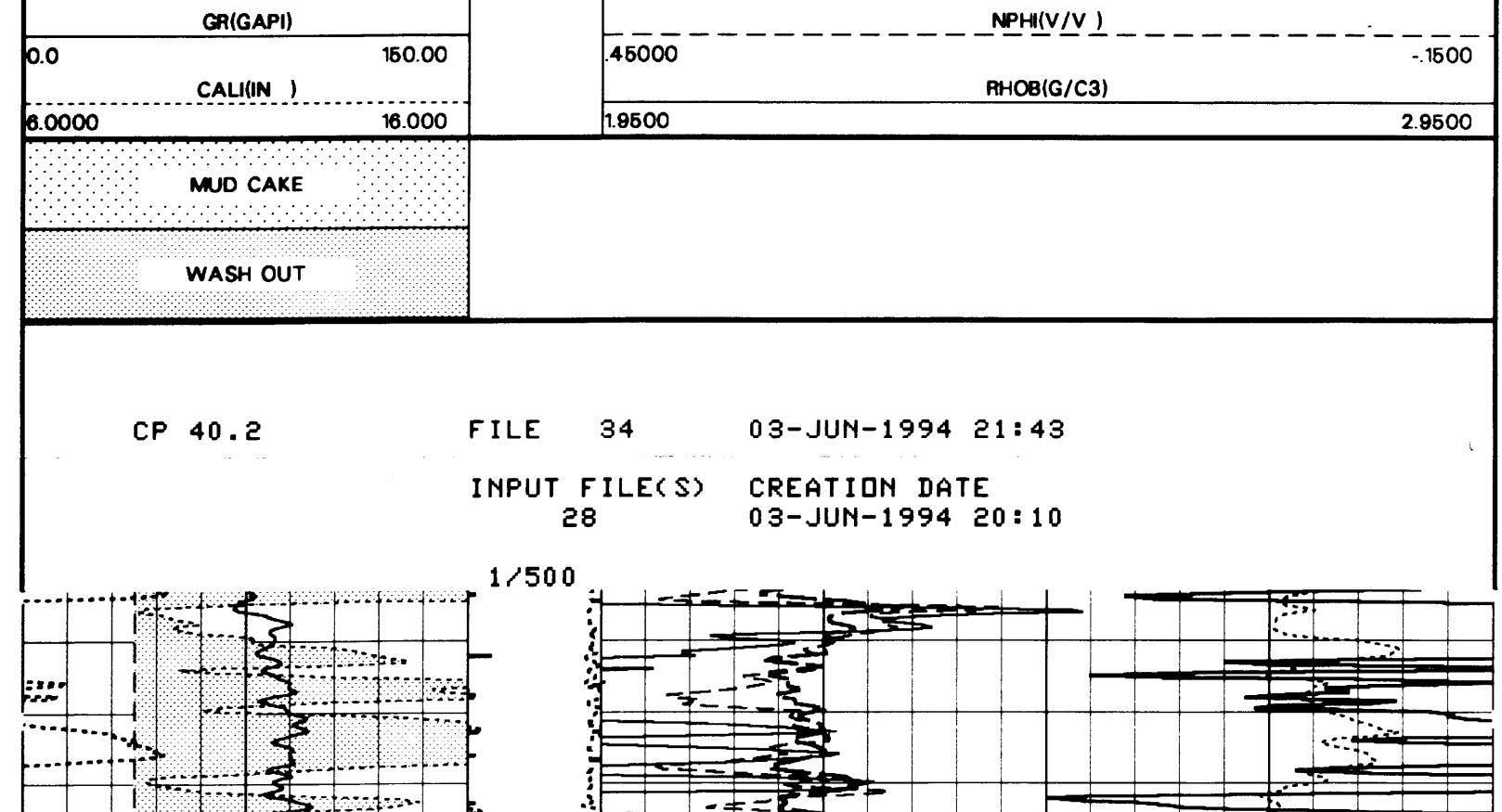
FILES SPLICED	SPLICE DEPTH
27 TO 27	1637.69 M
27 TO 27	1611.63 M
27 TO 28	1413.21 M

ACCUMULATED INTEGRATION VALUES SUMMARY:
Integrated Hole Volume: 1213.84 F3 FROM 2007.00 M TO 1356.36 M
Integrated Cement Volume: 644.895 F3 FROM 2007.00 M TO 1356.36 M
(ASSUMING 7.00000 IN D.D. CASING)

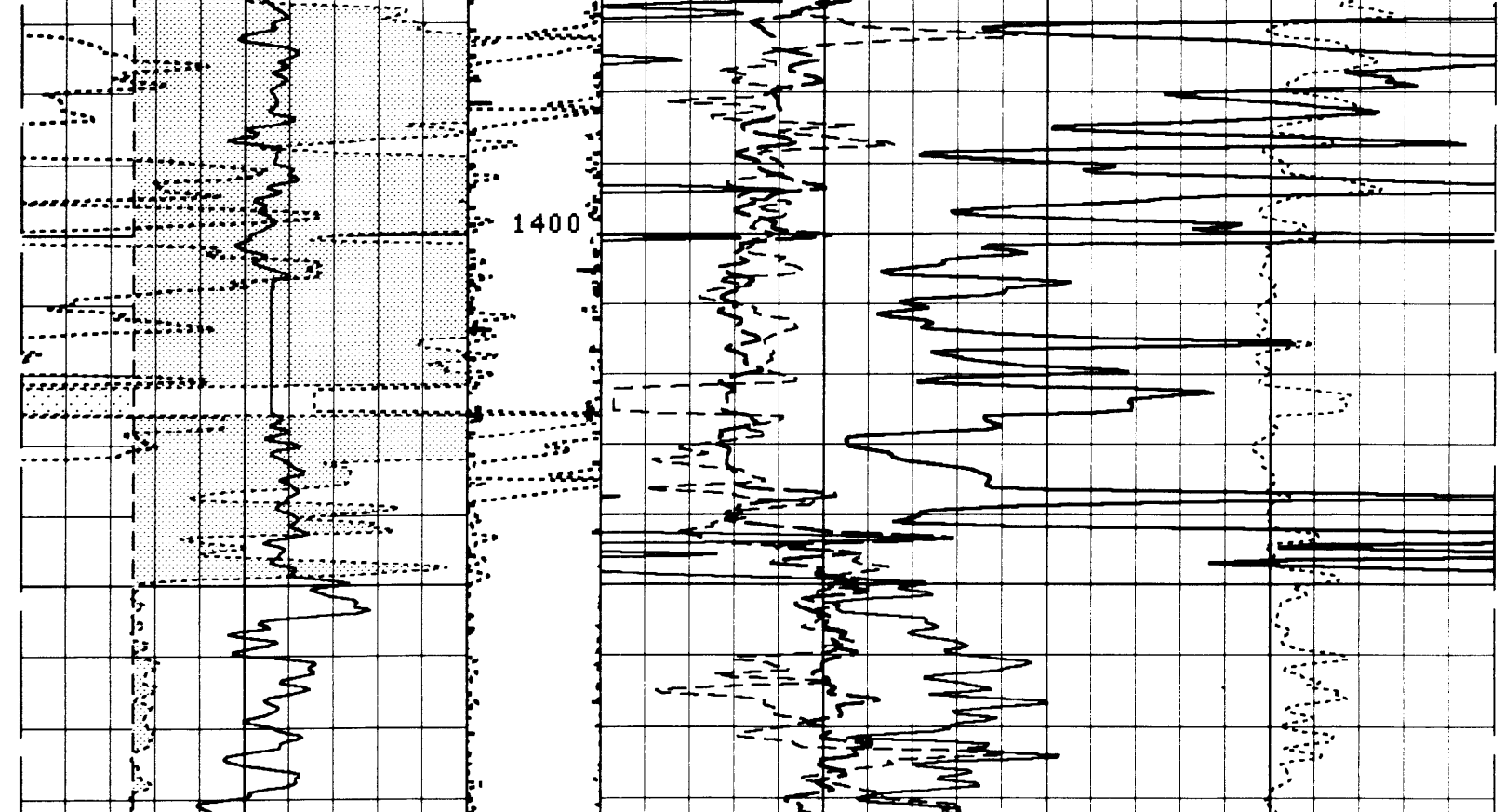
EVENT MARK SUMMARY:
OUTPUT INTERVAL DEPTH TRACK
Integrated Hole Volume 10.0000 F3 LEFT EDGE
Integrated Cement Volume 10.0000 F3 RIGHT EDGE



CP 40.2 FILE 34 03-JUN-1994 21:43
INPUT FILE(S) CREATION DATE 28 03-JUN-1994 20:10



CP 40.2 FILE 34 03-JUN-1994 21:32
INPUT FILE(S) CREATION DATE 27 03-JUN-1994 19:05



SENSOR MEASURE POINT TO TOOL ZERO
LDTD .81 METER SGTL 8.89 METER
CNTH 6.30 METER DTT -.28 METER
AMS 11.71 METER

PARAMETERS

NAME	VALUE	UNIT	NAME	VALUE	UNIT
PP	NORM		DO	0.0	M
FMUD	9.350000	LB/G	TD	2007.00	M
FCD	7.00000	IN	DHC	NONE	
BFM	LIQU		MDEN	2.71000	G/C3
FD	1.00000	G/C3	DPM	STAN	
MATR	LIME		HC	CALI	
NFDC	0		HSCD	YES	
SDCD	NO		MCCD	NO	
BSCD	NO		FSCD	NO	
MSCD	NO		PTCD	NO	
CCCD	NATU		SDAT	SDCN	
MCCR	NATU		SDCN	.500000	IN
FSAL	-50000.0	PPM	ANGL	0.0	DEG
GGRD	-010000.0	DF/F	BHFL	HATE	
CHSE	RHOB		CNPS	NPHI	
HOJT	GSRV		GTSE	TEMP	
SHT	10.00000	DEGC	BHT	70.0000	DEGC
DTCI	0.0	M	DFD	9.35000	LB/G
RMFS	347000	DHMM	MFTS	14.0000	DEGC
BS	8.50000	IN	BHS	OPEN	

COMPANY GFE Resources Ltd. SCHL FR 2006.0 M
WELL Langley #1 DRLR TD 2006.0 M
FIELD Exploration Elev: KB 69.7 M
RIG Century #11 STATE Victoria DL 64.0 M

Langley #1
LDL-ONL-GR-CALI
Run #1 1/500

