

SEISMIC CALIBRATION LOG

(Adjusted Continuous Velocity Log)



Company: BEACH PETROLEUM N.L.

Well: HENKE - 1
PETROLEUM DIVISION

Field: WILDCAT

Country: AUSTRALIA

Reference No: 570709 Interval: 0.00 to 1432.00

Date Logged: 07/07/87 Date Processed: 13/10/87

Location: 038 00' 20.35" S 141 11' 25.81" E

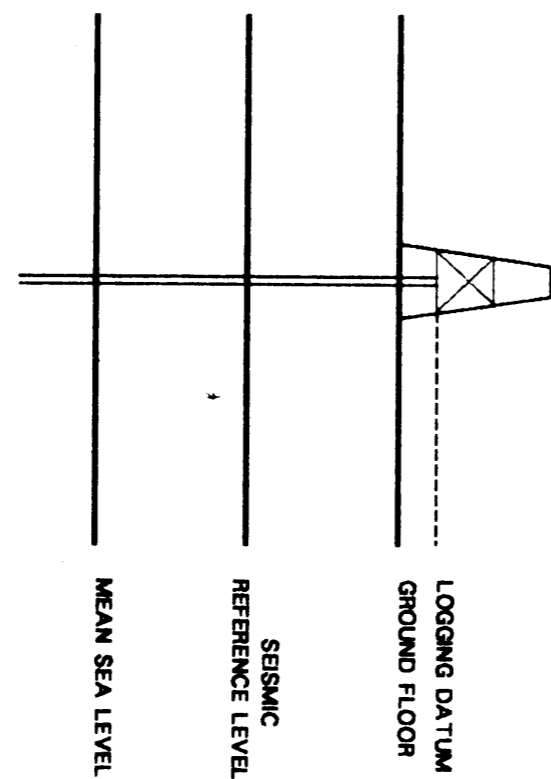
Elevations: KB: 38.7 M DF: 38.4 M GL: 34.1 M

Permanent Datum: MSL Depth Units: METRES

FIELD RECORDING: Engineer: J. PATEL Location: VEA Program Version: 28.4

COMPUTATION: Analyst: M. SANDERS Centre: STJ Baseline: 14.9X4

Logging Datum: 38.7 M
ELEVATION ABOVE MEAN SEA LEVEL
Seismic Reference Datum: MSL
Ground Level: 34.1 M

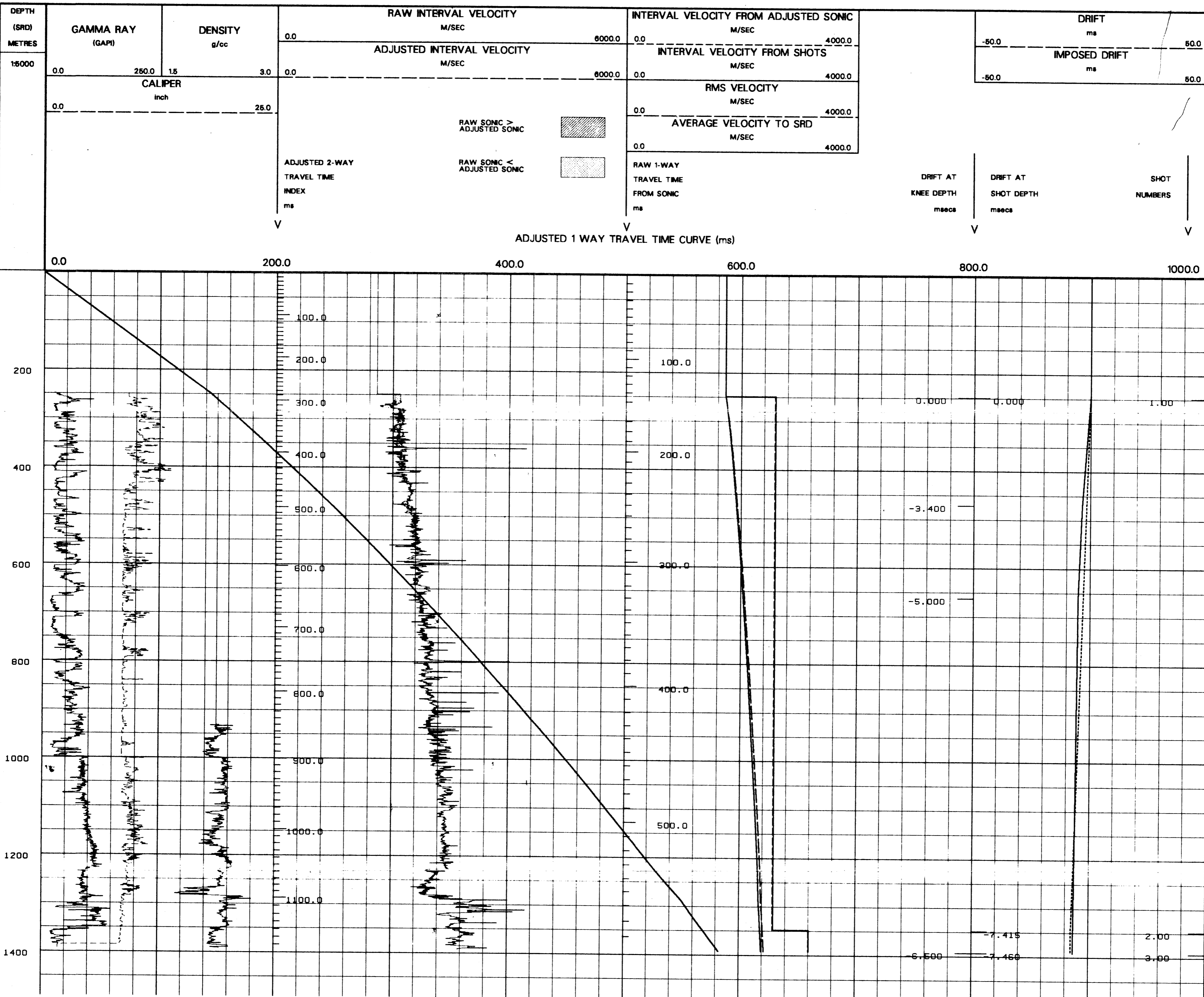


Total Number of Levels: SRD
Depth Reference: SRD

Time Reference	SRD
Run Date	SRD
1 07/07/87	SRD

Run	Date	Tool Type	Bit Size/Depth	Casing Size/Depth	Top Depth	Bottom Depth
1	07/07/87	BHC	8 1/2" @ 1432 M	9 5/8" @ 287 F	287 M	1435 M

All interpretations are opinions based on inferences from electrical or other measurements and we cannot, and do not guarantee the accuracy or correctness of any interpretations, and we shall not, except in the case of gross or willful negligence on our part, be liable or responsible for any loss, costs, damages or expenses incurred or sustained by anyone resulting from any interpretations made by any of our officers, agents or employees. These interpretations are also subject to Clause 4 of our General Terms and Conditions as set out in our current Price Schedule.



COMPANY BEACH PETROLEUM N.L.
FIELD WILDCAT
WELL HENKE - 1
COUNTRY AUSTRALIA

