

COMPANY: BEACH PETROLEUM N.L.
 WELL: FAHLEY #2. PETROLEUM
 FIELD: WILDCAT.
 RIG: D.D.E.#19
 STATE: VICTORIA.
 NATION: AUSTRALIA.
 LOCATION: OTHWAY BASIN

LATITUDE: 037 59'44.86"S
 LONGITUDE: 141 02'47.01"E

PERMANENT DATUM: MSL ELEVATIONS-
 ELEV. OF PERM. DATUM: 0.0 M KB: 31.4 M
 LOG MEASURED FROM: ABOVE PERM. DATUM DF: 31.1 M
 DRLG. MEASURED FROM: KB GL: 26.8 M

DATE: 20 AUG 87
 RUN NO: 1

OTHER SERVICES-
 DLL-MSFL-GR
 BHC-GR
 HSS

PROGRAM
 TAPE NO:
 28.4
 SERVICE
 ORDER NO:
 VEA

DEPTH-DRILLER: 1300.0 M
 DEPTH-LOGGER: 1301.0 M
 BTH. LOG INTERVAL: 1296.0 M
 TOP LOG INTERVAL: 301.0 M

CASING-DRILLER: 301.0 M
 CASING-LOGGER: 301.0 M
 CASING: 9 5/8 IN.
 WEIGHT: 36.0000 LB/F
 BIT SIZE: 12 1/4 IN. 8 1/2 IN.
 DEPTH: 304.0 M 1300.0 M

TYPE FLUID IN HOLE: KCL-POLYMER.
 DENSITY: 9.50 LB/G
 VISCOSITY: 48.0 S
 PH: 9.5
 FLUID LOSS: 3.8 C3
 SOURCE OF SAMPLE: FLOWLINE
 RM: .077 OHMM AT 17.5 DEGC
 RHF: .071 OHMM AT 10.5 DEGC
 RHC: .129 OHMM AT 10.5 DEGC
 SOURCE RHF/RHC: PRESS/PRESS
 RM AT BHT: .044 OHMM AT 46.7 DEGC
 RHF AT BHT: .033 OHMM AT 46.7 DEGC
 RHC AT BHT: .061 OHMM AT 46.7 DEGC

TIME CIRC. STOPPED: 10:00 20/AUG
 TIME LOGGER ON BTH.: 14:33 20/AUG

MAX. REC. TEMP: 46.7 DEGC

LOGGING UNIT NO: 922
 LOGGING UNIT LOC: VEA
 RECORDED BY: ALAN RICHMOND.
 WITNESSED BY: AHMAD TABASSI

REMARKS:
 DLL & GR LOGGED TO CASING, MSFL TO 850 M.
 DLL RUN WITH 1/12 IN. STANDOFFS.

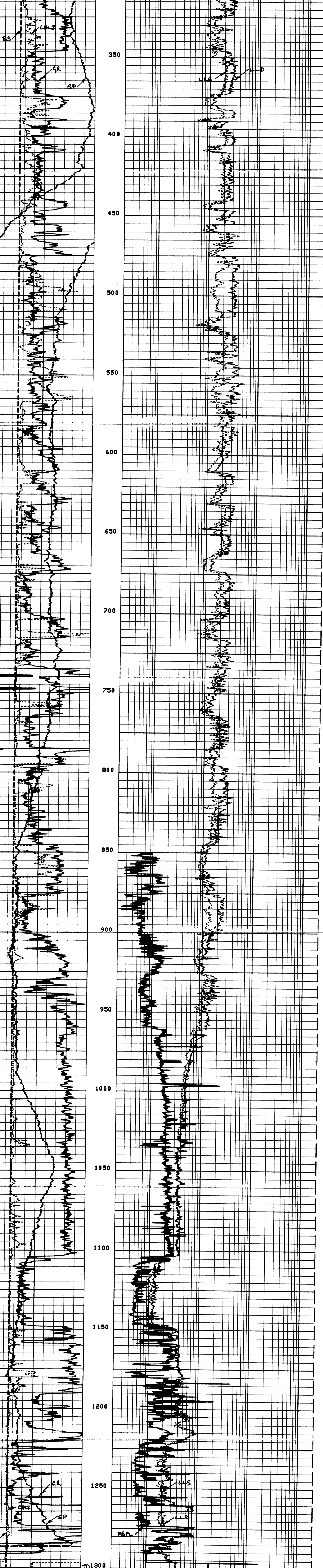
EQUIPMENT NUMBERS-
 DSE-DB 1758 DLS-E 765 DLC-CC 1971 DRS-C 788
 SRE-CB 1958 SRA-A 768 SGC-JC 3395 DLH 1830
 MRH 3829 MSM 2866

ALL INTERPRETATIONS ARE OPINIONS BASED ON INFERENCES FROM ELECTRICAL OR OTHER MEASUREMENTS AND WE CANNOT, AND DO NOT GUARANTEE THE ACCURACY OR CORRECTNESS OF ANY INTERPRETATIONS, AND WE SHALL NOT, EXCEPT IN THE CASE OF GROSS OR WILLFUL NEGLIGENCE ON OUR PART, BE LIABLE OR RESPONSIBLE FOR ANY LOSS, COSTS, DAMAGES OR EXPENSES INCURRED OR SUSTAINED BY ANYONE RESULTING FROM ANY INTERPRETATION MADE BY ANY OF OUR OFFICERS, AGENTS OR EMPLOYEES. THESE INTERPRETATIONS ARE ALSO SUBJECT TO OUR GENERAL TERMS AND CONDITIONS AS SET OUT IN OUR CURRENT PRICE SCHEDULE.

CP 28.4 FILE 102 20-AUG-87 23:47
 DATA ACQUIRED 20-AUG-87 15:58

RS (IN)	6.0000	16.000		
CALI (IN)	6.0000	16.000		
GR (GAPI)	0.0	150.00	LLS (OHMM)	2000.0
SP (MV)	80.00	20.000	LLD (OHMM)	2000.0

CP 28.4 FILE 101 20-AUG-87 23:44
 DATA ACQUIRED 20-AUG-87 15:58



CP 28.4 FILE 101 20-AUG-87 23:34
 DATA ACQUIRED 20-AUG-87 14:32

RS (IN)	6.0000	16.000		
CALI (IN)	6.0000	16.000	MSFL (OHMM)	2000.0
GR (GAPI)	0.0	150.00	LLS (OHMM)	2000.0
SP (MV)	80.00	20.000	LLD (OHMM)	2000.0

SENSOR MEASURE POINT TO TOOL ZERO

SPAR 19.74 METER	SP 19.74 METER
CALI .89 METER	GR 15.72 METER
SIO 9.68 METER	SI90 9.68 METER
DIO 9.68 METER	SV90 9.68 METER
DVO 9.68 METER	DI90 9.68 METER
LLD 9.68 METER	DV90 9.68 METER
TI .86 METER	TENS 4.55 METER
CHSF .79 METER	LLS 9.68 METER

PARAMETERS

NAME	VALUE	UNIT	NAME	VALUE	UNIT
SPT STAN	8.50000	IN	WMUD	9.50000	LB/G
PP	NORM		BHS	OPEN	
			DD	0.0	M