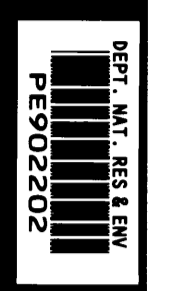


06 APR 1988
Schlumberger
SYDNEY LOG
INTERPRETATION
CENTRE



GEOGRAM*

(Synthetic Seismogram)

Company: BEACH PETROLEUM N.L.
Well: FAHLEY - 2
Field: WILDCAT
Country: AUSTRALIA
Reference No: 569001 Interval: 0.00 to 1300.00
Date Logged: 20/08/87 Date Processed: 26/08/87
Location: 037 58' 44.88" S 141 02' 47.01" E
Elevations: KB: 31.4 M DF: 311 M GL: 26.8 M
Permanent Datum: MSL Depth Units: METRES

LOG INFORMATION
FIELD RECORDING: Engineer: A. RICHMOND Location: VEA Program Version: 28.4
COMPUTATION: Analyst: M. SANDERS Centre: SYJ Baseline: 14.914
ELEVATION ABOVE MEAN SEA LEVEL
Logging Datum: 31.4 M
Seismic Reference Datum: MSL
Ground Level: 26.8 M
Sonic Calibration By Check Shots: YES Sonic Edited By Analyst: YES
Two-Way Time Sample Interval: 2 ms Environment: onshore

True Vertical Depth Corrections Applied:
Source of True Vertical Depth Data:
Maximum Hole Deviation:

Run	Date	Tool Type	Bit Size/Depth	Casing Size/Depth	Top Depth	Bottom Depth
1	20-08-87	BHC	8 1/2" @ 1300 M	9 5/8" @ 301 M	305 M	1300 M
VSP Run	Date	Gun Offset	Hydro Offset	Gun Elevation	Hydrophone Elevation	Gun Azimuth
1	20-08-87	50 M	618 M	2.8 M below GL	225 M below GL	135 °
						135 °

GEOGRAM MODEL ASSUMPTIONS
Equal time slice model of horizontal plane layers.
Plane acoustic waves at normal incidence.
No intrinsic attenuation.

POLARITY
An upgoing wave, reflected by an increase in acoustic impedance with depth, is displayed as a white trough under normal polarity.

SIGNALURES
All signatures displayed in the Geogram results correspond to a wavelet convolved with a reflection coefficient of -0.5 (A decrease in acoustic impedance with depth).

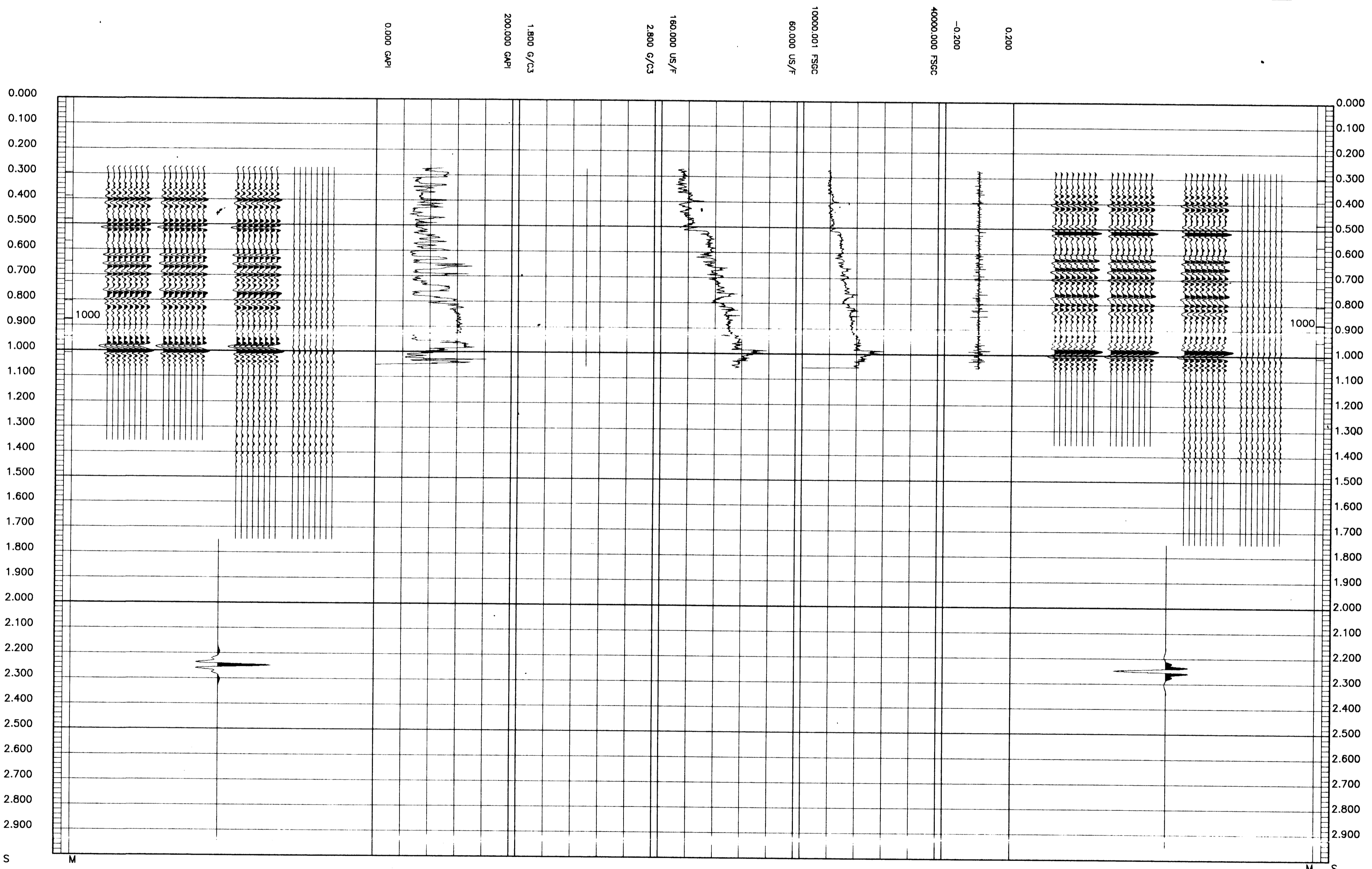
REMARKS

FOLD HERE

The well name, location and borehole reference data were furnished by the customer.
All interpretations are opinions based on inferences from electrical or other measurements and we cannot, and do not guarantee the accuracy or correctness of any interpretation, and we shall not, except in the case of gross or willful negligence on our part, be liable or responsible for any loss, costs, damages or expenses incurred or sustained by anyone resulting from any interpretations made by any of our officers, agents or employees. These interpretations are also subject to Clause 4 of our General Terms and Conditions as set out in our current Price Schedule.

** GEOGRAM **
12-60 HERTZ ZERO PHASE
BUTTERWORTH WAVELET
FAHLEY - 1

MULTIPLES ONLY REVERSE POLARITY	MULTIPLES ONLY NORMAL POLARITY	PRIMARIES AND MULTIPLES REVERSE POLARITY	PRIMARIES WITH TRANSMISSION LOSS REVERSE POLARITY	PRIMARIES REVERSE POLARITY	REFLECTION	ACOUSTIC IMPEDANCE	SONIC	DENSITY	GAMMA RAY	MULTIPLES ONLY NORMAL POLARITY	PRIMARIES AND MULTIPLES NORMAL POLARITY	PRIMARIES WITH TRANSMISSION LOSS NORMAL POLARITY	PRIMARIES NORMAL POLARITY
------------------------------------	-----------------------------------	---	--	-------------------------------	------------	-----------------------	-------	---------	-----------	-----------------------------------	--	---	------------------------------



COMPANY BEACH PETROLEUM N.L.
FIELD WILDCAT
WELL FAHLEY - 2
COUNTRY AUSTRALIA

