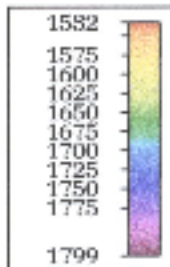
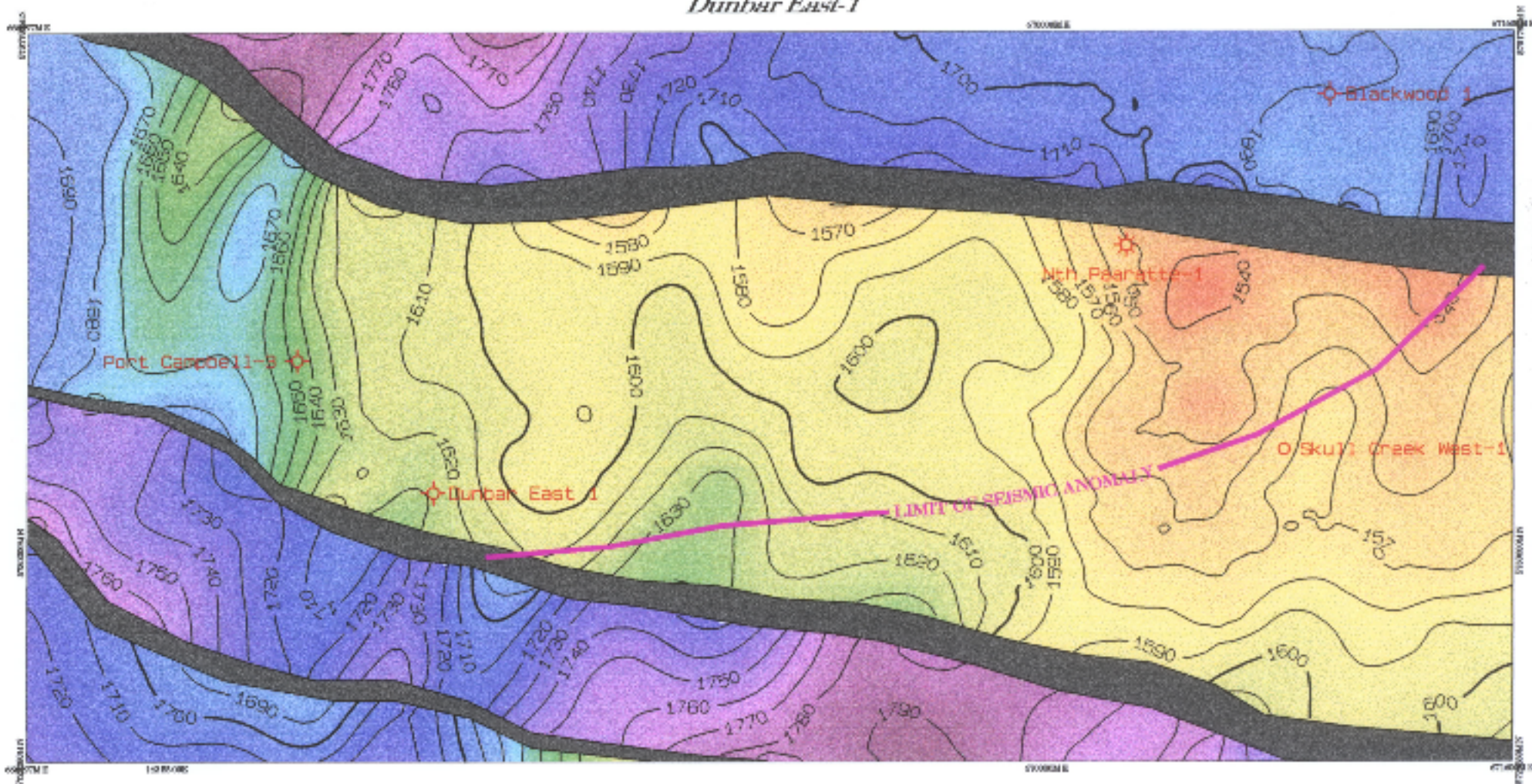


Dunbar East-1



DEPT. NAT. RES & ENV



PE905746

CULTUS PETROLEUM NL	
W.P. and P.W.2 Owen Bell, Victoria DUNBAR EAST-1 (PART BELL)	
TWT Structure On Top HEAVYFIELD SANDSTONE Datum - MSL	
DATE: 04/08/97	BY: [unclear]
DATE: 04/08/97	BY: [unclear]
DATE: 04/08/97	BY: [unclear]

FIGURE-8