

Spore/Pollen Distribution Chart
(Diversity)

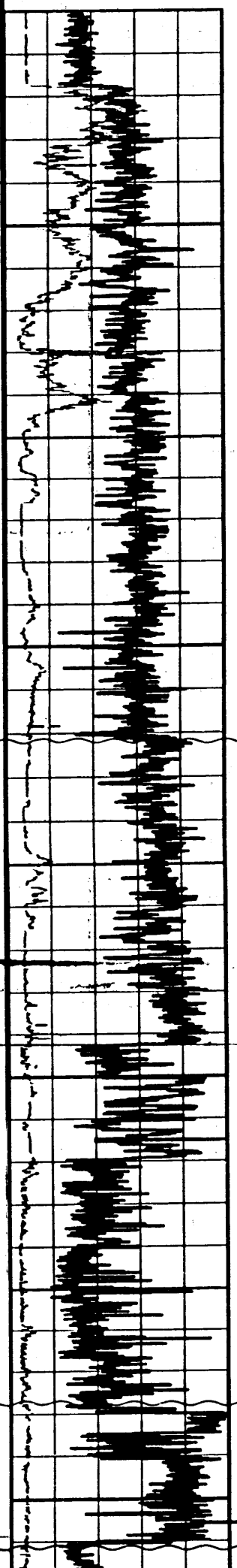
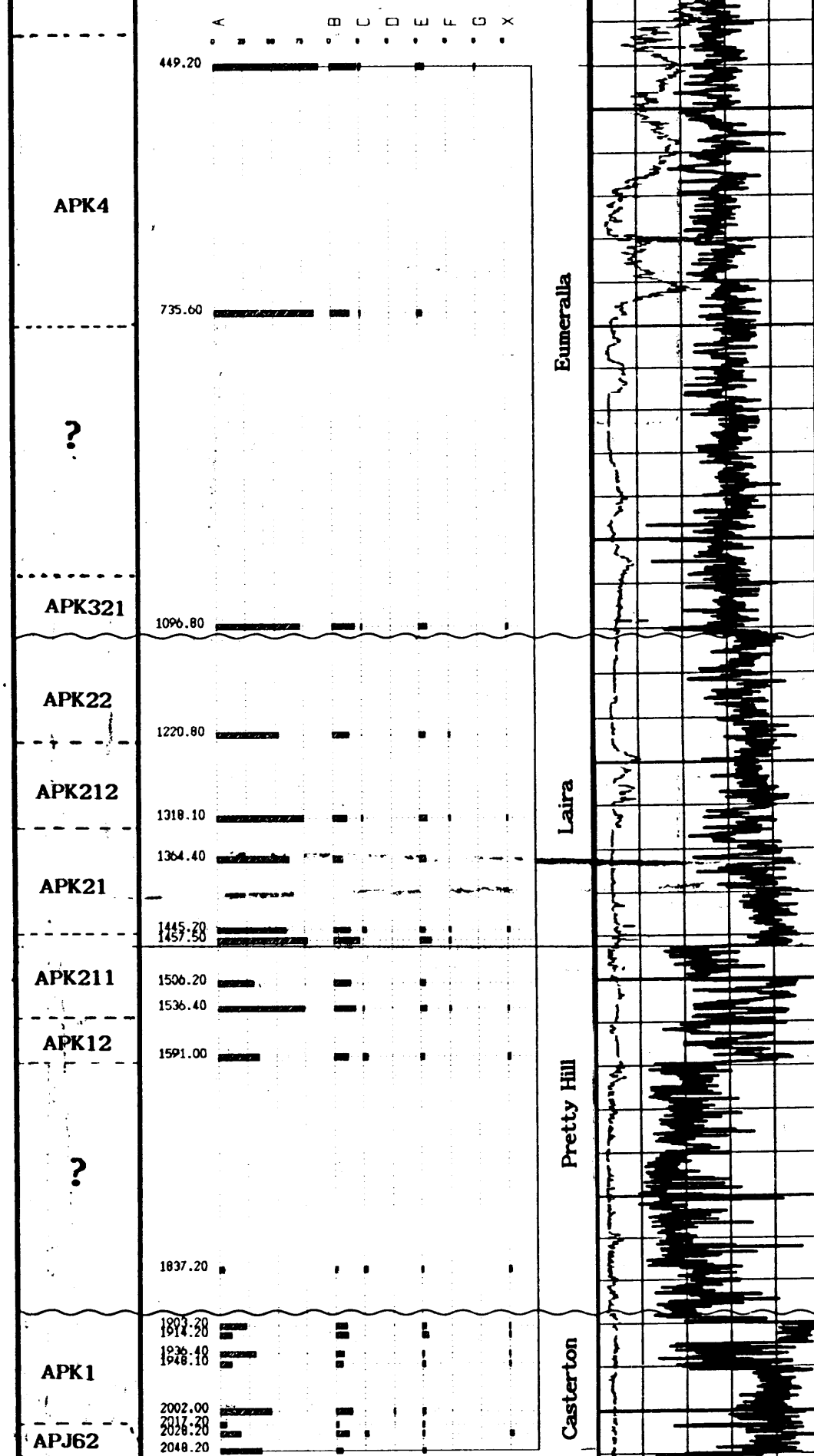
Total Flora



Digby #1 Major Plant Groups

- Land Plant Spores
- Gymnospermous Pollen
- Angiospermous Pollen
- Fungal Spores
- Algal Spores
- Spinose Acritarchs
- Dinoflagellates
- NON-ENDEMIC

Depth (Metres)

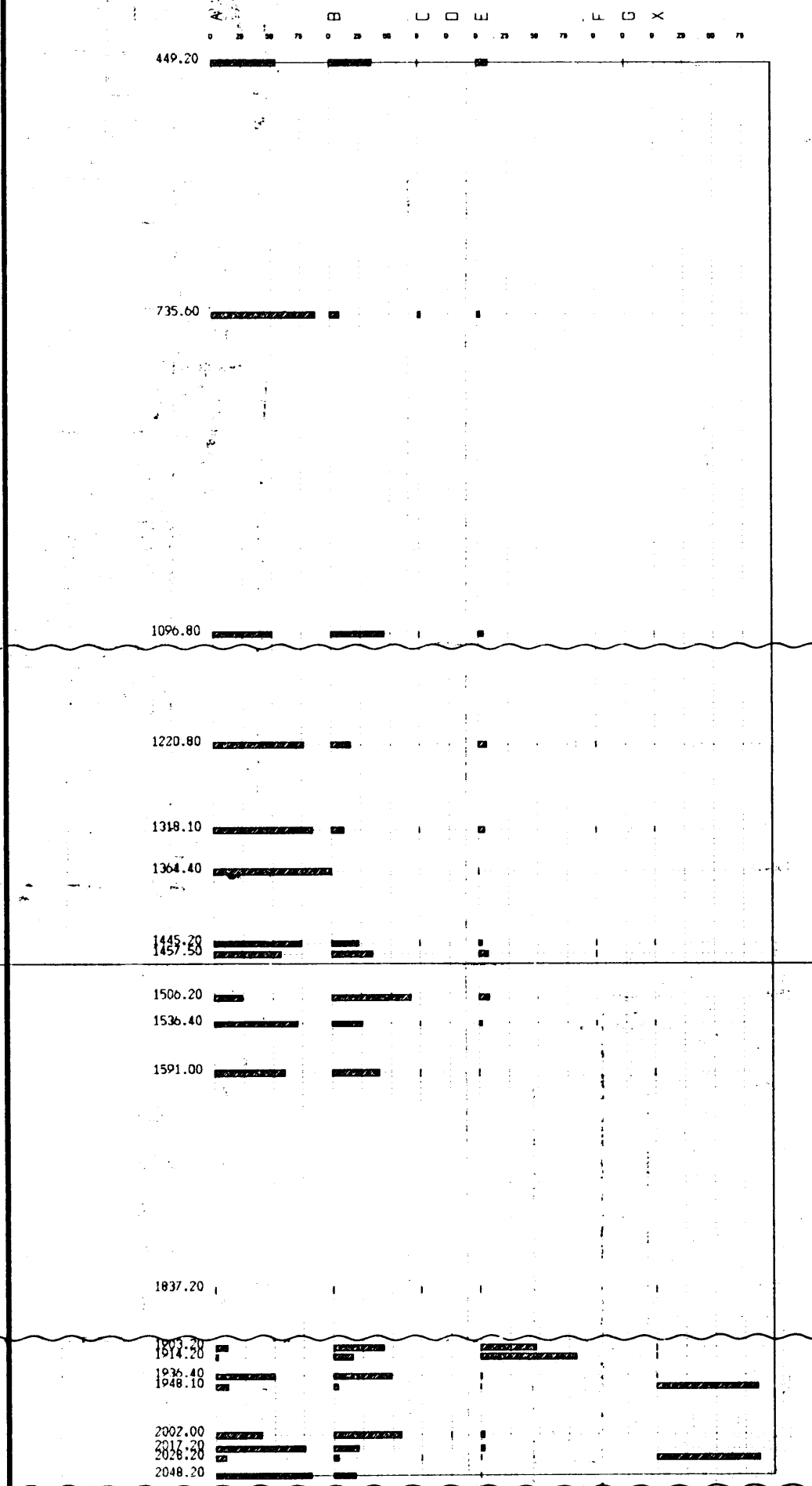


GR
GPI 200
CAL IN
IN 18

Spore/Pollen Distribution Chart
(Counts)

Total Flora

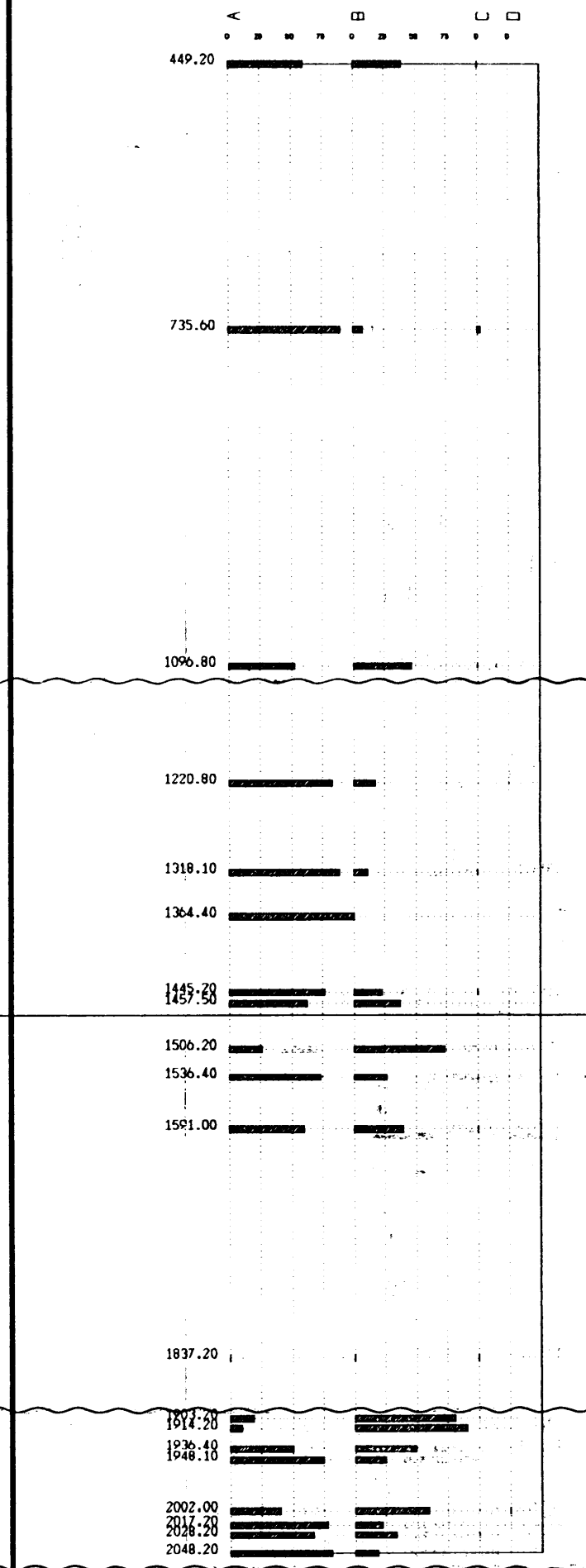
Depth (Metres)



Spore/Pollen Distribution Chart
(Counts)

Land Plants

Depth (Metres)



Spore/Pollen Distribution Chart
(Counts)

Depth (Metres)

