

COMPOSITE WELL LOG

WOODSIDE OIL N. L.

SALT LAKE No. 1

SHEET 1 OF 2



SALT LAKE - I COMPLETION REPORT

PETROLEUM TENEMENT: PEP 72

STATE: VICTORIA

BASIN: GIPPSLAND

4-MILE SHEET: SALE

WELL STATUS: PLUGGED & ABANDONED

LOCATION: Lat. 38° 26' 53" S
Long. 147° 05' 12" E
Datum: - Australian Geodetic

ELEVATION: Ground Level 62.81 feet
Rotary Table 74.25 feet
Kelly Bushing 75.58 feet (Well datum)
Datum Williamstown

Date Spudded: 12 April, 1970
Date reached T.D.: 4 May, 1970
Date Rig Released: 8 May, 1970

Total Depth: 5395 feet

Bit Size	Inches	From	To
	26	K.B.	35'
	17 1/2	35'	325'
	12 1/4	325'	2679'
	8 3/4	2679'	4249'
	8 1/2	4249'	5048'
	8 1/2	5048'	5395' (T.D.)

Casing	Inches	Wt.	Gd.	Depth	Cement	Cemented to
	20	-	-	35'	20 sax	Surface
	13 3/8	48 lbs	H40	317'	325	Surface
	9 5/8	36 lbs	J55	2679'	350	1000 feet

Cement Plugs: 0 - 50'; 2605' - 2755'; 4725' - 4850'; 5100' - 5225'

Drilled by: Woodside Oil N.L. (Crew supplied by Richter Bowden Drilling Pty Ltd.)
 Drilling Method: Rotary
 Logged by: Schlumberger SEACO Inc.
 Cemented by: Halliburton Limited
 Mud Logging: Data Analysis Pty. Ltd.
 Dipmeter interpretation: Data Analysis Pty. Ltd.
 Lithology by: C. Galehouse, A. Marimuthu, B. Warris
 Drafted by: Geodrilling Services Pty. Ltd.

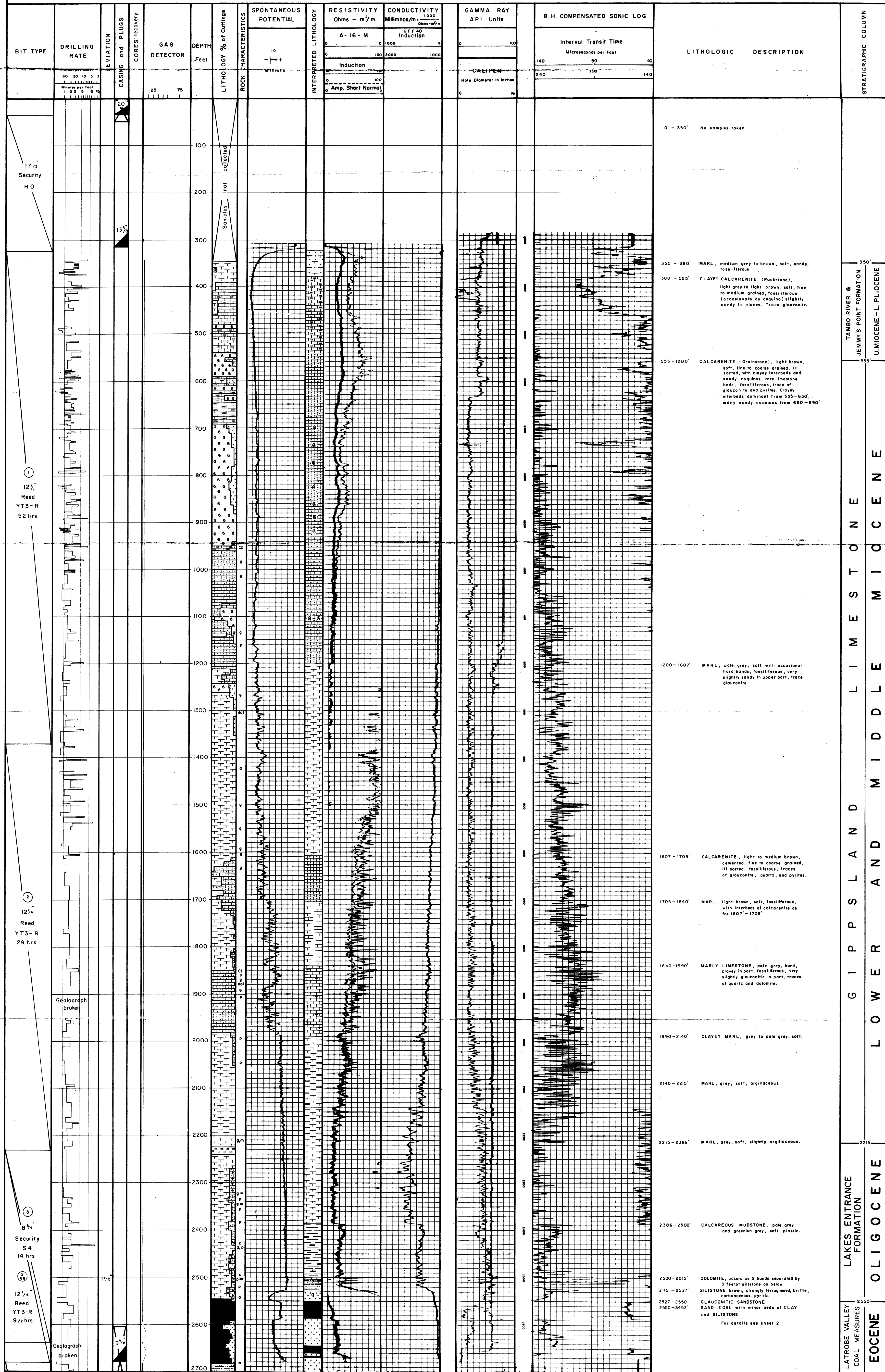
RUN No.	INDUCTION ELECTRIC LOG		BORE HOLE COMPENSATED SONIC LOG		FORMATION DENSITY LOG
	1	2	1	2	1
Date - Driller	20-4-70	3-5-70	20-4-70	3-5-70	4-5-70
Depth - Logger	2680'	5393'	2680'	5388'	5393'
Bottom Log Interval	2679'	5387'	2671'	5378'	5385'
Top Log Interval	316'	2681'	316'	2681'	2681'
Casing - Driller	13 3/8" to 317'	9 5/8" to 2680'	13 3/8" to 317'	9 5/8" to 2680'	9 5/8" to 2680'
Casing - Logger	316'	2681'	316'	2681'	2681'
Bit Size	12 1/2"	8 1/2"	12 1/2"	8 1/2"	8 1/2"
Type of Fluid in Hole	Gel	Gel	Gel	Gel	Gel
Density / Viscosity	10.0 / 55	9.9 / 53	10.0 / 55	9.9 / 53	9.9 / 53
pH / Fluid Loss	9.0 / 8 ml	9.7 / 4.0 ml	9.0 / 8 ml	9.7 / 4.0 ml	9.7 / 4.0 ml
Source of Sample	Flowline	Flowline	Flowline	Flowline	Flowline
Rm at Meas. Temp.	4.27 at 63°F	3.36 at 59°F	4.27 at 63°F	3.3 at 59°F	3.36 at 59°F
Rmf of Meas. Temp.	4.36 at 63°F	2.86 at 59°F	4.36 at 63°F	2.86 at 59°F	2.86 at 59°F
Rmc of Meas. Temp.	2.91 at 59°F	2.91 at 59°F	2.91 at 59°F	2.91 at 59°F	2.91 at 59°F
Source Rm / Rmc	Press / Press	Press / Press	Press / Press	Press / Press	Press / Press
Rm at BHT	1.7 at 162°F	1.47 at 140°F	1.7 at 162°F	1.45 at 140°F	1.45 at 140°F
Time since Circ.	2 1/2 hrs	2 hrs	4 hrs	8 hrs	12 hrs
Meas. Rec. Temp.	162°F	142°F	162°F	142°F	142°F
Equip. / Location	4522 / Sale	4522 / Sale	4522 / Sale	4522 / Sale	4522 / Sale
Recorded by	Affleck	Affleck	Affleck	Affleck	Affleck
Witness	Gathouse	Solten	Gathouse	Butten	Butten

LITHOLOGIC REFERENCE

	Sandstone		Calcareous		m Micaceous
	Siltstone		Clayey calcarenite (Packstone)		p Pyritic
	Clay		Dolomite		c Carbonaceous
	Mudstone		Marl		dol Dolomitic
	Coal		Feldspathic		Fossiliferous
	Limestone		Calcareous		Fossiliferous

WELL SYMBOLS

	Fluorescence		Casing shoe
	Sidewall core, number-recovered		Plugged interval
	Sidewall core, number-not recovered		



WOODSIDE OIL N. L.

SALT LAKE No. 1 WELL

COMPOSITE LOG

Date: June 1970 Drawing No. 50 (Sheet 1 of 2)
 Report: Well Completion Enclosure: 1