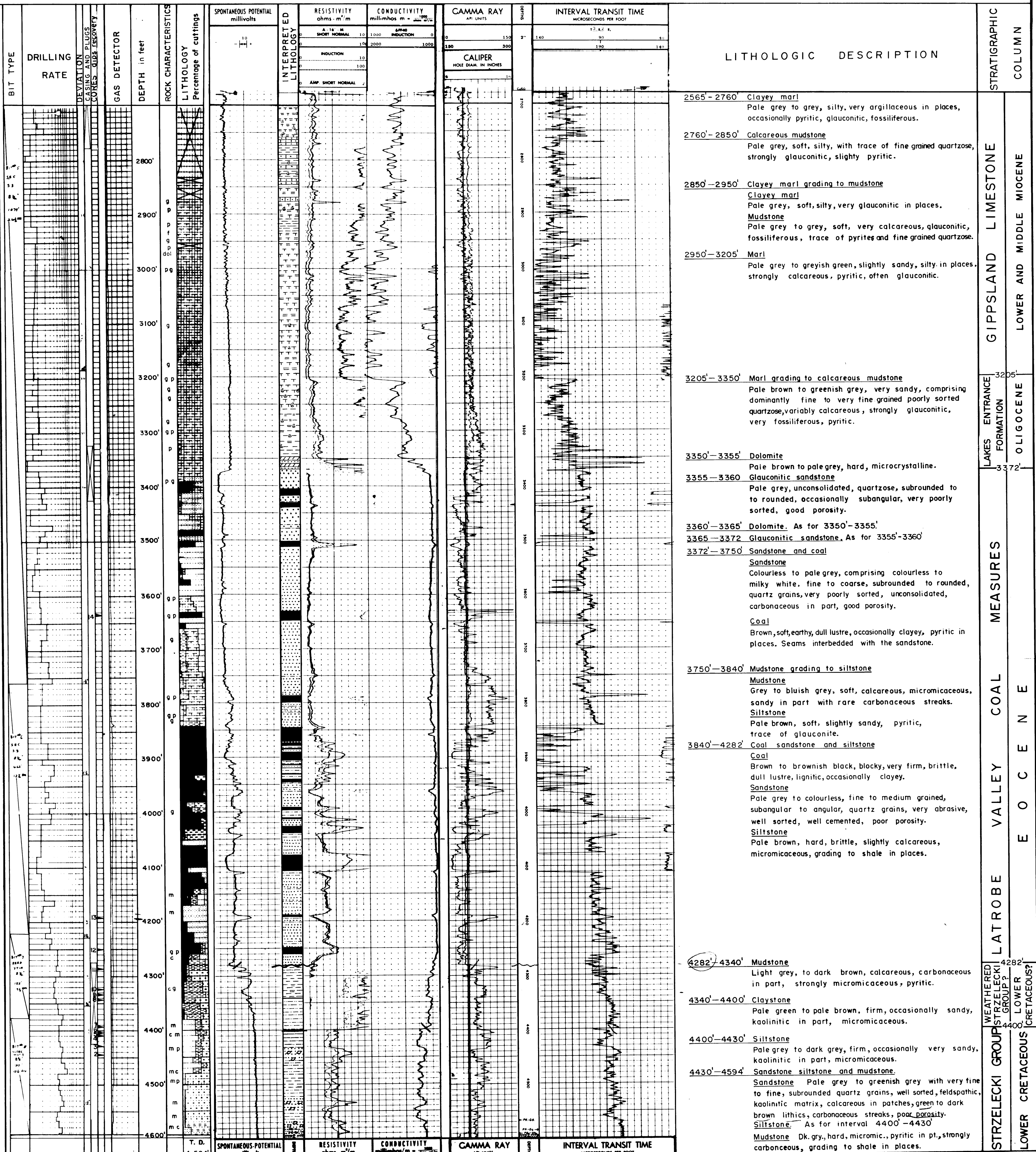


# SPOON BAY No. 1

2700' - 4594'



**LITHOLOGIC DESCRIPTION**

2565'-2760' Clayey marl  
Pale grey to grey, silty, very argillaceous in places, occasionally pyritic, glauconitic, fossiliferous.

2760'-2850' Calcareous mudstone  
Pale grey, soft, silty, with trace of fine grained quartzose, strongly glauconitic, slightly pyritic.

2850'-2950' Clayey marl grading to mudstone  
Clayey marl  
Pale grey, soft, silty, very glauconitic in places.  
Mudstone  
Pale grey to grey, soft, very calcareous, glauconitic, fossiliferous, trace of pyrites and fine grained quartzose.

2950'-3205' Marl  
Pale grey to greyish green, slightly sandy, silty in places, strongly calcareous, pyritic, often glauconitic.

3205'-3350' Marl grading to calcareous mudstone  
Pale brown to greenish grey, very sandy, comprising dominantly fine to very fine grained poorly sorted quartzose, variably calcareous, strongly glauconitic, very fossiliferous, pyritic.

3350'-3355' Dolomite  
Pale brown to pale grey, hard, microcrystalline.

3355'-3360' Glauconitic sandstone  
Pale grey, unconsolidated, quartzose, subrounded to rounded, occasionally subangular, very poorly sorted, good porosity.

3360'-3365' Dolomite. As for 3350'-3355'.  
3365'-3372' Glauconitic sandstone. As for 3355'-3360'.  
3372'-3750' Sandstone and coal  
Sandstone  
Colourless to pale grey, comprising colourless to milky white, fine to coarse, subrounded to rounded, quartz grains, very poorly sorted, unconsolidated, carbonaceous in part, good porosity.  
Coal  
Brown, soft, earthy, dull lustre, occasionally clayey, pyritic in places. Seams interbedded with the sandstone.

3750'-3840' Mudstone grading to siltstone  
Mudstone  
Grey to bluish grey, soft, calcareous, micromicaceous, sandy in part with rare carbonaceous streaks.  
Siltstone  
Pale brown, soft, slightly sandy, pyritic, trace of glauconite.

3840'-4282' Coal sandstone and siltstone  
Coal  
Brown to brownish black, blocky, very firm, brittle, dull lustre, lignitic, occasionally clayey.  
Sandstone  
Pale grey to colourless, fine to medium grained, subangular to angular, quartz grains, very abrasive, well sorted, well cemented, poor porosity.  
Siltstone  
Pale brown, hard, brittle, slightly calcareous, micromicaceous, grading to shale in places.

4282'-4340' Mudstone  
Light grey, to dark brown, calcareous, carbonaceous in part, strongly micromicaceous, pyritic.

4340'-4400' Claystone  
Pale green to pale brown, firm, occasionally sandy, kaolinitic in part, micromicaceous.

4400'-4430' Siltstone  
Pale grey to dark grey, firm, occasionally very sandy, kaolinitic in part, micromicaceous.

4430'-4594' Sandstone siltstone and mudstone  
Sandstone Pale grey to greenish grey with very fine to fine, subrounded quartz grains, well sorted, feldspathic, kaolinitic matrix, calcareous in patches, green to dark brown lithics, carbonaceous streaks, poor porosity.  
Siltstone As for interval 4400'-4430'.  
Mudstone Dk. gry, hard, micromic., pyritic in pt., strongly carbonaceous, grading to shale in places.

**STRATIGRAPHIC COLUMN**

GIPPSLAND LIMESTONE

LOWER AND MIDDLE MIOCENE

LAKES ENTRANCE FORMATION

OLIGOCENE

MEASURES

COAL

VALLEY

LATROBE

STRZELECKI GROUP

WEATHERED STRZELECKI GROUP

LOWER CRETACEOUS