

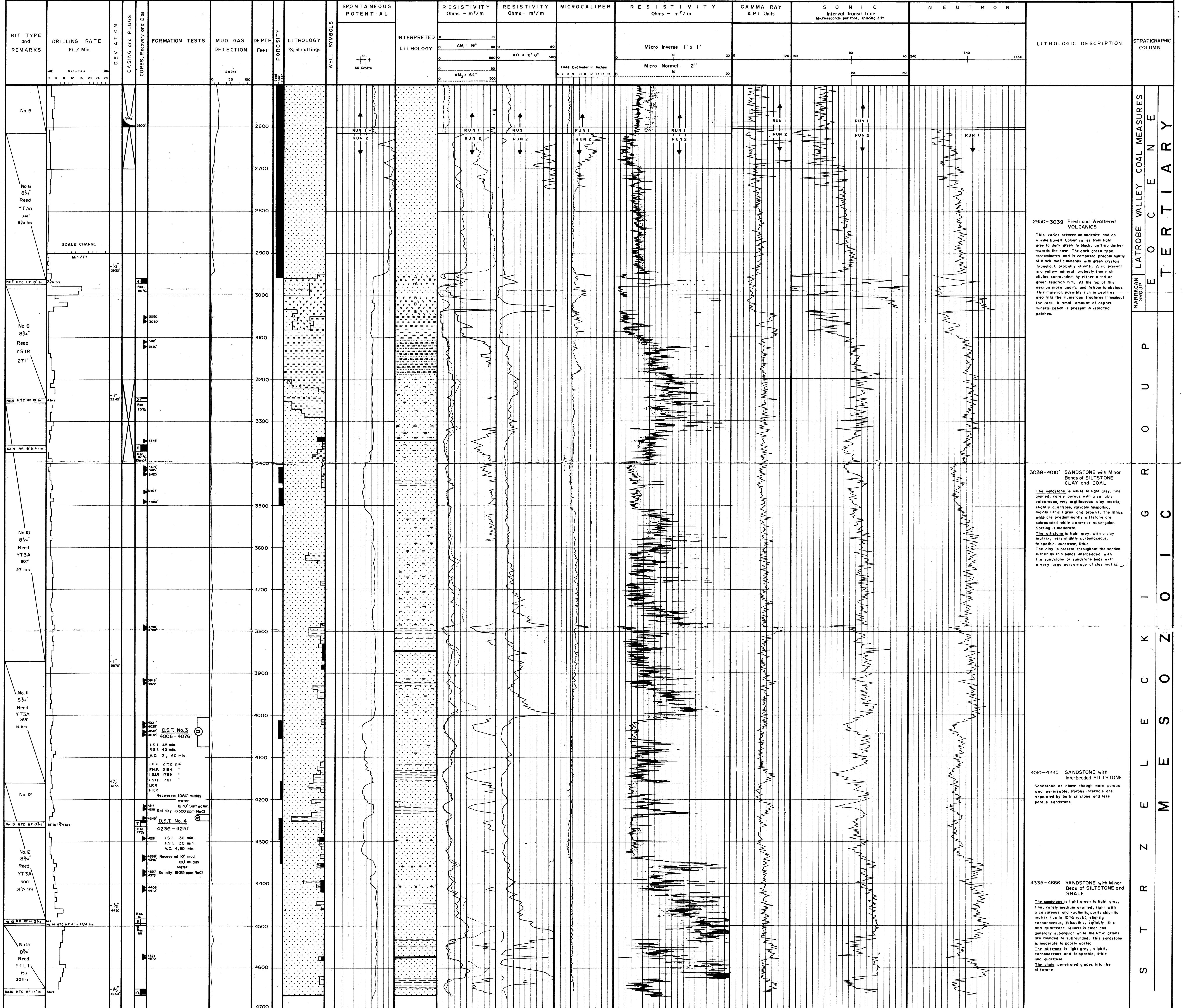
COMPOSITE WELL LOG

ST. MARGARET ISLAND No. 1

2500-4664'

Sheet 2
Enclt

DEPT. NAT. RES. & ENV.
PE601519



2950-3039' Fresh and Weathered VOLCANICS
This varies between an andesite and an olivine basalt. Colour varies from light grey to dark green to black, getting darker towards the base. The dark green type predominates and is composed predominantly of black mafic minerals with green crystals throughout, probably olivine. Also present is a yellow mineral, probably iron rich olivine surrounded by either a red or green reaction rim. At the top of this section there are quartz and feldspar. This material, possibly rich in zeolites, also fills the numerous fractures throughout the rock. A small amount of copper mineralization is present in isolated patches.

3039-4010' SANDSTONE with Minor Bands of SILTSTONE CLAY and COAL
The sandstone is white to light grey, fine grained, rarely porous with a variably calcareous, very argillaceous clay matrix, slightly quartzose, variably felsephatic, mainly lithic (grey and brown). The lithics which are predominantly siltstone are surrounded by white quartz and feldspar. Sorting is moderate.
The siltstone is light grey, with a clay matrix, very slightly carbonaceous, felsephatic, quartzose, lithic. The clay is present throughout the section either as thin bands interbedded with the sandstone or sandstone beds with a very large percentage of clay matrix.

4010-4335' SANDSTONE with Interbedded SILTSTONE
Sandstone as above though more porous and permeable. Porous intervals are separated by both siltstone and less porous sandstone.

4335-4666 SANDSTONE with Minor Bands of SILTSTONE and SHALE
The sandstone is light green to light grey, fine, rarely medium grained, light with a calcareous and kaolinitic, partly chloritic matrix (up to 10% rock), slightly carbonaceous, felsephatic, variably lithic and quartzose. Quartz is clear and generally subangular while the lithic grains are rounded to subrounded. This sandstone is moderate to poorly sorted.
The siltstone is light grey, slightly carbonaceous and felsephatic, lithic and quartzose.
The shale penetrates grades into the siltstone.

STRATIGRAPHIC COLUMN
TERTIARY
UPPER CRETACEOUS
MESOZOIC
CRETACEOUS
TERTIARY