

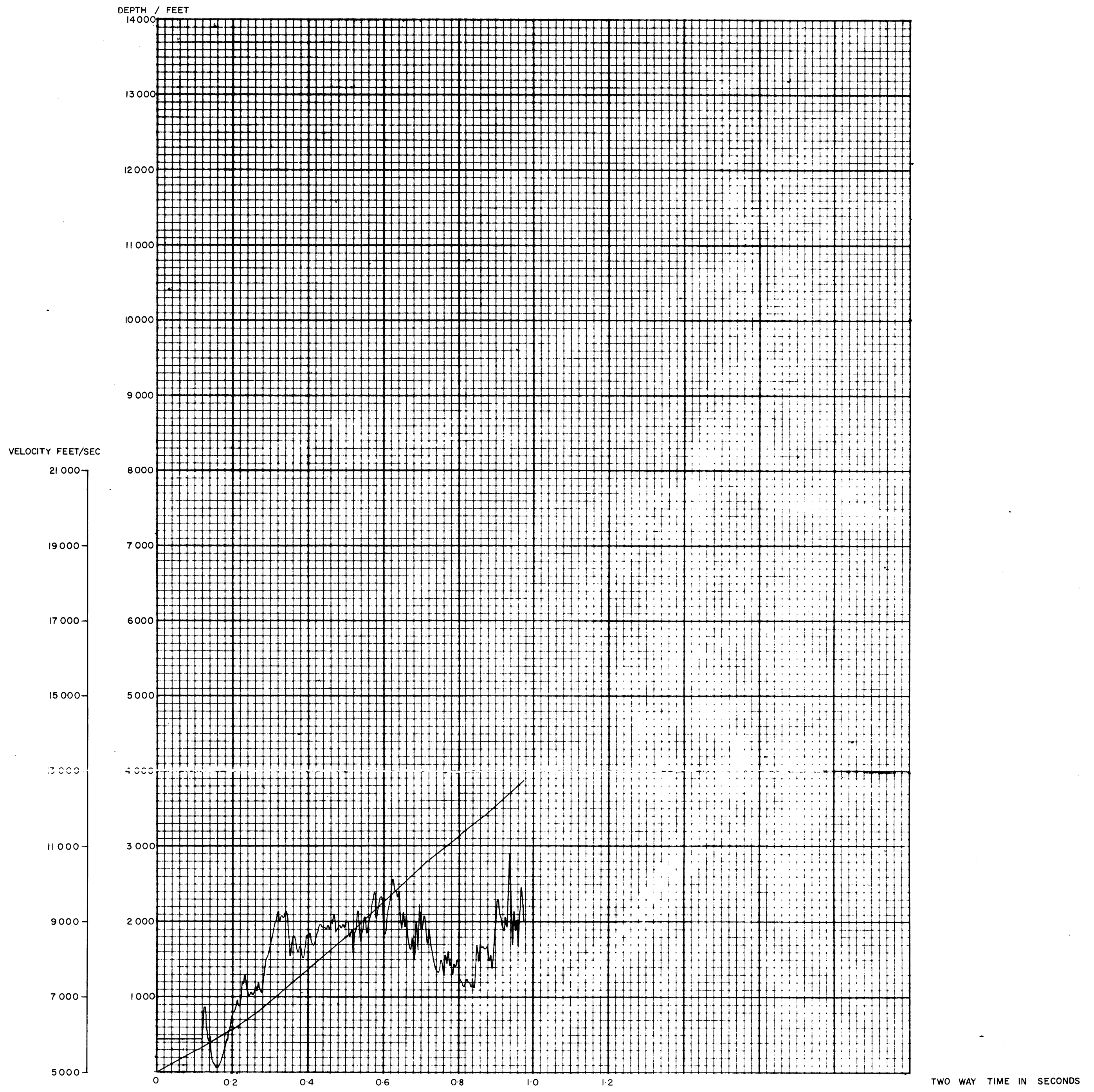
Seacombe South No. 1

DATA ANALYSIS PTY. LTD.

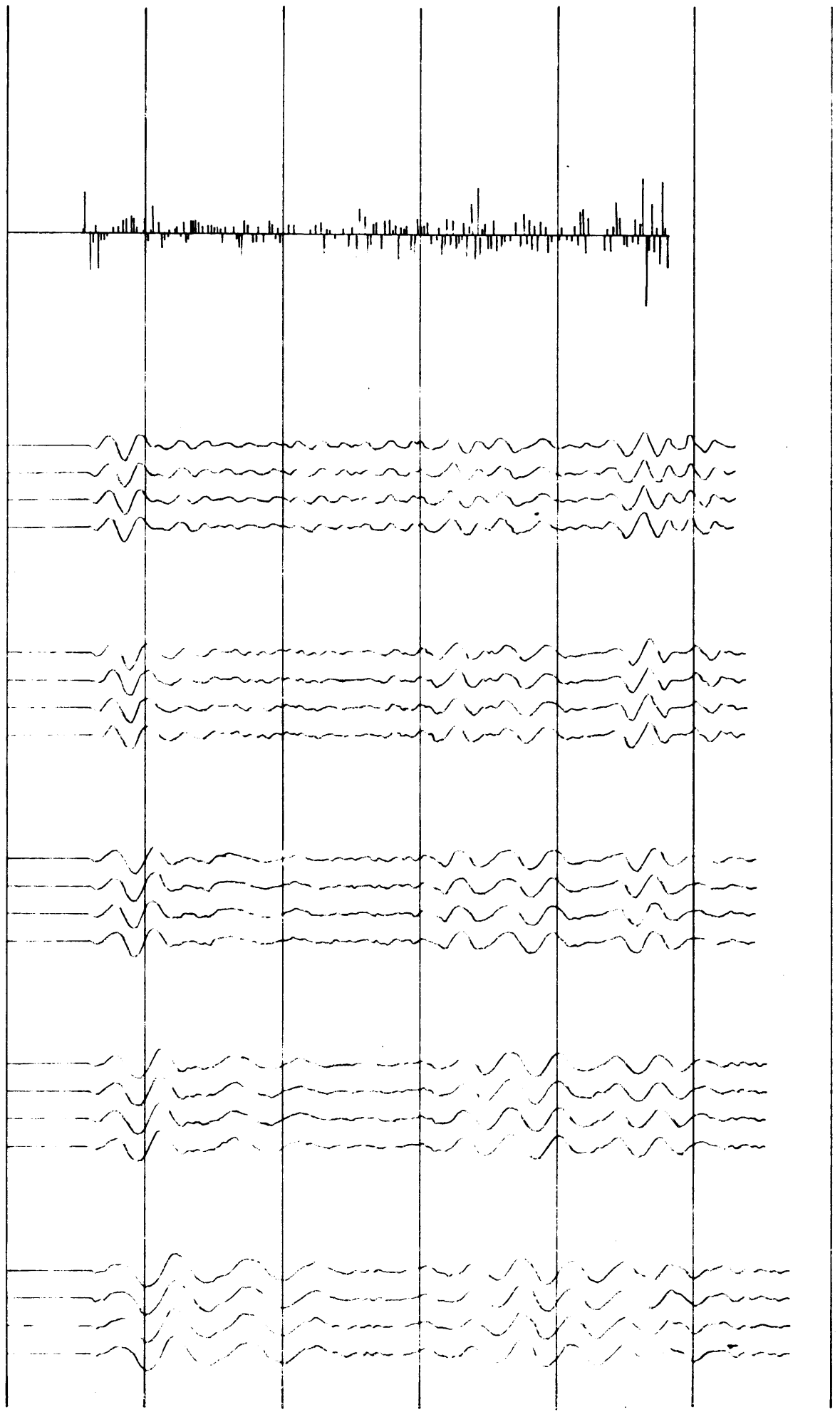
DEPT. NAT. RES & ENV
PE601460

SYNTHETIC SEISMOGRAM For: WOODSIDE OIL N.L.

Well: SEACOMBE SOUTH No.1



REFLECTION COEFFICIENTS
 SAMPLING INTERVAL : 2.0 MILLISECONDS
 SCALE : 0.2 UNITS : 1 INCH



SEACOMBE SOUTH No.1
 WOODSIDE OIL N. L.
 Drg. No. 82 Dec. 1970
 Note: Over the interval 400'-1350'
 sonic values derived from
 Spoon Bay No.1 were used.