

**WELL SUMMARY
GIPPSLAND-2
(W430)**

CONTENTS PAGE:

APPENDIX.....

1.0 Well Card

2.0 Well Summary

3.0 Weekly Drilling Reports

4.0 Lithology

1.0 WELL CARD

PE904179

This is an enclosure indicator page.
The enclosure PE904179 is enclosed within the
container PE904178 at this location in this
document.

The enclosure PE904179 has the following characteristics:

- ITEM_BARCODE = PE904179
- CONTAINER_BARCODE = PE904177
 - NAME = well card
 - BASIN = GIPPSLAND
 - PERMIT =
 - TYPE = WELL
 - SUBTYPE = WELL_CARD
- DESCRIPTION = well card (from Well Summary) Gippsland 2
- REMARKS =
- DATE_CREATED = 30/11/1939
- DATE_RECEIVED =
- W_NO = W430
- WELL_NAME = Gippsland-2
- CONTRACTOR =
- CLIENT_OP_CO = Gippsland Oil Co

(Inserted by DNRE - Vic Govt Mines Dept)

2.0 SUMMARY REPORT

(MINING AND GEOLOGICAL JOURNAL)

Notes on Gippsland Oil Bores

By I. C. H. Croll, B.Sc.

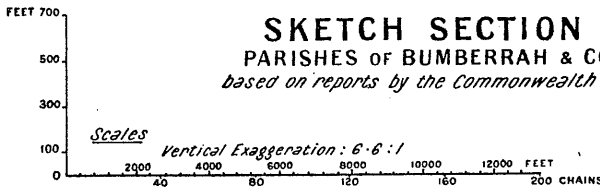
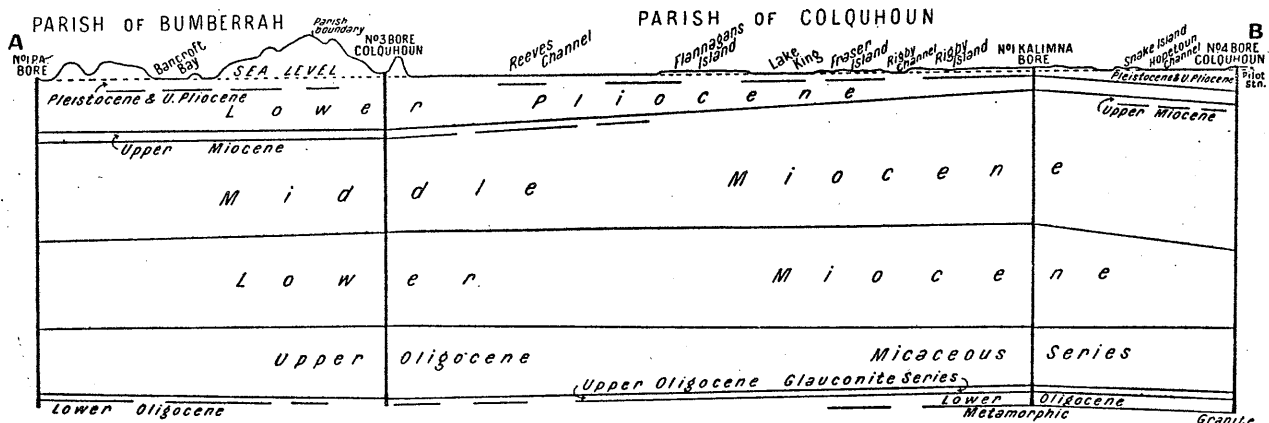
GOVERNMENT BORES.

Since the beginning of 1940 the Victorian and Commonwealth Governments have extended the exploratory drilling campaign for oil by completing three bores in the Parish of Colquhoun, whilst two others are in progress in that parish and one in the Parish of Bengworden South. The three completed bores yielded a great amount of valuable geological information, as they were all in regions which had not previously been drilled, and help to fill in gaps in the knowledge of the structural conditions of the district between Lakes Entrance and Metung. The accompanying west-east section A-B includes two of these bores, Nos. 3 and 4, and indicates how the information gained from them links up with the data from No. 1 Point Addis bore at Metung and No. 1 Kalimna bore at Rigby Island (see *Records of Boring Operations 1923-30*, pp. 116 and 117). It should be noted that the relation of the vertical to the horizontal scales is 6.6:1, and that after allowing for this considerable exaggeration the surfaces of stratigraphic divisions are relatively flat. As the section is along the strike of the beds this is not surprising, but it does indicate how remote is the possibility that faulting has occurred along the direction of the dip, as has been claimed.

Cores from each bore were sent to the Commonwealth Palaeontologist at Canberra, and summaries of her reports, where available, are given below. As the purpose of the bores was primarily to obtain a more complete knowledge of the physical properties of the glauconitic series, the samples of this material were sealed on recovery, and are being tested for porosity, permeability, saturation, and lithological details.

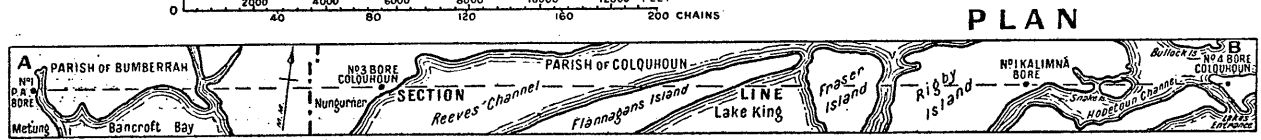
No. 3 BORE, NUNGURNER.

This bore is situated on the shore of Reeves Channel (Lake King), about 20 chains north-easterly of the Nungurner jetty, in the township of Nungurner. No drilling difficulties were encountered until the top of the glauconitic sandstone series was reached at 1,434 feet, when the depth and hard drilling made progress very slow. The series comparable with the oil-bearing beds at Lakes Entrance proved to be only a few feet thick, and was succeeded by bands of a very hard sandstone containing some glauconite. It is not unreasonable to regard this hard sandstone as part of the glauconitic series, rather than to make a separate subdivision of it or to include it with the Lower Oligocene beds with which it has no affinity, and it has been shown on the section in that way. A similar hard sandstone



SKETCH SECTION A—B
 PARISHES OF BUMBERRAH & COLQUHOUN
 based on reports by the Commonwealth Palaeontologist

I. C. H. Croll - B.Sc.
 9-8-40



PLAN

was recorded below the typical glauconitic bed at the Gippsland Oil Company's No. 1 bore (see below). The Commonwealth Palaeontologist has determined the following sequence in the Nungurner bore:—

Lower Pliocene	100'-243'
Upper Miocene	243'-283'
Middle Miocene	283'-706'
Lower Miocene	706'-1,112'
Upper Oligocene, micaceous series	1,114'-1,434'
Upper Oligocene, glauconitic series	1,434'-1,454'

The limit of the plant was reached at 1,454 feet, and the equipment was moved to a new site near Kalimna, where No. 6 bore is in progress.

No. 4 BORE, LAKES ENTRANCE.

The Commonwealth-owned deep-drilling plant was shifted from Sperm Whale Head to a site at the Pilot Station on the eastern side of the entrance to the lakes (see plan), and drilling commenced early in 1940. A complete sequence of Tertiary beds was passed through, and the Commonwealth Palaeontologist has reported as follows:—

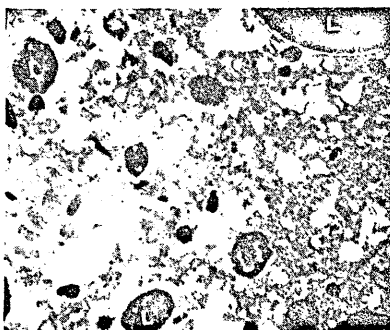
Pleistocene and Upper Pliocene	to 100'
Lower Pliocene	100'-160'
Upper Miocene	174'
Middle Miocene	184'-798'
Lower Miocene	799'-1,140'
Upper Oligocene, micaceous series	1,150'-1,421'
Upper Oligocene, glauconitic series	1,421'-1,444'
Lower Oligocene	1,484'-1,498'
Basement (granite)	1,508'

Several samples in the lower parts of this bore were of sufficient interest to warrant having sections cut for microscopic examination. At 1,425 ft. 6 in. the material is a greyish green glauconitic sandstone containing abundant loose and rounded pellets of limonite. A freshly fractured face of the sample has the appearance of high porosity, due to the limonitic pellets being so loose and dropping out, but the rock is probably no more porous in bulk than that from the bores further north and north-east. In thin section (No. 43,586) the material is seen to consist of abundant sharply angular quartz grains less than 0.1 mm. in diameter and some biotite set in a granular aggregate of dull green glauconite, together with circular or oval pellets of

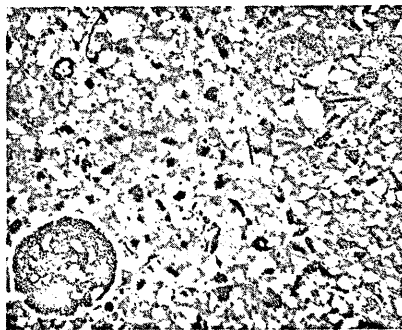
limonite which have a maximum diameter of 1.5 mm. Some of these pellets appear to be homogeneous, whilst others have formed by the deposition of concentric layers of limonite round grains of biotite. In only one respect does this material differ to any extent from that recorded in other bores in the district, and that is in the comparative abundance of foraminifera, of which Mr. W. J. Parr has been able to determine at least six genera—*Globigerina*, *Cibicides*, *Pullenia*, *Elphidium*, *Eponides*, and *Bolivina*.

The core from 1,491'-1,494' consists of a soft yellowish brown ironstone almost entirely made up of replacements of organic remains. In thin section (No. 43,607) the organic remains appear as limonitic replacements of parts of polyzoa, foraminifera, shells and echinoid spines, set in a matrix of siderite and calcite. At 1,494 feet (section 43,609) the rock is a ferruginous sandstone and organic remains are rare. Quartz grains occur in two distinct groups—fairly abundantly as small angular fragments less than 0.1 mm. across, and sparingly as sub-angular or oval grains ranging from 0.5 to 1.5 mm. in diameter. Limonite is moderately abundant, both interstitial and in the form of the concentrically coated pellets, and other minerals present include small amounts of glauconite, biotite in various stages of alteration to chloritic material, highly decomposed feldspar, and fragments of granite, all set in a sideritic and calcareous matrix.

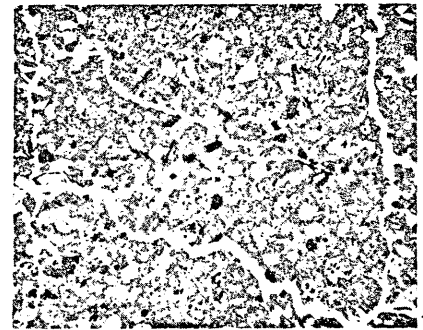
The bore entered solid granite at 1,508 feet, and a piece of core 3 inches long was obtained before drilling was suspended at 1,508 ft. 6 in. (section No. 43,612). The rock has a mottled appearance, due apparently to the pink colour of the orthoclase feldspar and the faint greenish tinge of the plagioclases, and it does not closely resemble the pink granite that is quarried north of Lakes Entrance at Colquhoun. The minerals present are quartz; orthoclase feldspar altering to kaolin; plagioclases (principally oligoclase) with prominent zoning; microcline; biotite altering in part to chlorite; apatite; and ilmenite or magnetite. Potash feldspars appear to predominate over the soda-lime feldspars, and the rock is a true biotite granite similar to that found at the bases of the No. 2 L.E.D. and No. 1 Government bores.



Glauconitic sandstone 1,425 ft. 6 in., No. 4 bore, Parish of Colquhoun. Angular quartz grains set in glauconitic matrix. Note rounded pellets of limonite (L).



Hard, siliceous limestone at 1,155 ft. 6 in., No. 5 bore, Parish of Colquhoun, showing rounded segregation of glauconite enclosing fragments of quartz.



Hard siliceous limestone, 1,217 ft., No. 5 bore, Parish of Colquhoun. Similar to hard band at 1,155 ft. 6 in. but without segregations of glauconite.

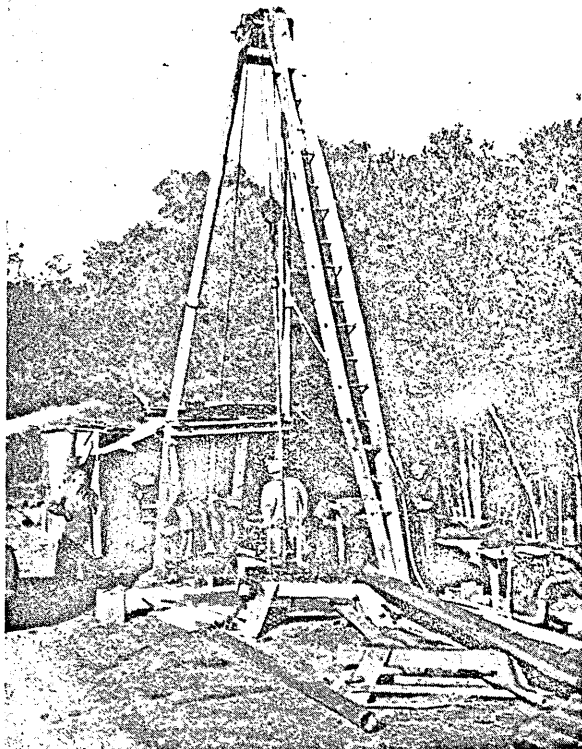
Traces of free oil were recorded in the glauconitic series at 1,441 and 1,443 feet, but the upper part of the series was apparently quite dry.

On completion of this bore the plant was removed to a site at Holland's landing in the Parish of Bengworden South where work is now in progress.

No. 5 BORE, MARINGA CREEK.

The site of this bore is on the north bank of Maringa Creek, approximately 1 mile south-south-westerly of the Kalinna West Post Office and State School (Parish of Colquhoun). The stratigraphic sequence has been determined as follows:—

Pleistocene and Upper Pliocene ..	10'-70'
Lower Pliocene	80'-120'
Middle Miocene	130'-700'
Lower Miocene	710'-1,060'
Upper Oligocene, micaceous series	1,070'-1,228'
Upper Oligocene, glauconitic series	1,228'-1,249'
	(last sample).



Scout Drilling plant at Maringa Creek.

The bore reached a depth of 1,255 feet, but the last 6 feet of core was not recovered after the rods broke and left an obstruction in the hole. The thickness of the glauconitic series at this point is therefore in doubt, but is not less than 21 feet.

One feature of the micaceous series in this bore was the unusual number of nine hard bands, from 4 to 12 inches thick, nearly double the number hitherto recorded in other bores. At 1,155 ft. 6 in. to 1,156 ft.

6 in. (section 43,738) the hard band is a fine grained grey siliceous limestone containing abundant fragments of angular quartz less than 0.1 mm. across; some irregular shaped and some oval segregations of grass-green glauconite up to 1 mm. in diameter, enclosing fine fragments of quartz and biotite; moderately abundant small flakes of biotite mostly altered to an emerald green chloritic material; and organic remains; all set in a very fine calcareous matrix. The organic remains include foraminifera, polyzoa, and a sponge spicule. At 1,217 feet (section 43,745) the material is a buff coloured limestone almost identical with that at 1,155 ft. 6 in. except that the segregations of glauconite are absent.

The boring plant has now been removed to a site near the mouth of Lake Bunga.

GIPPSLAND OIL COMPANY.

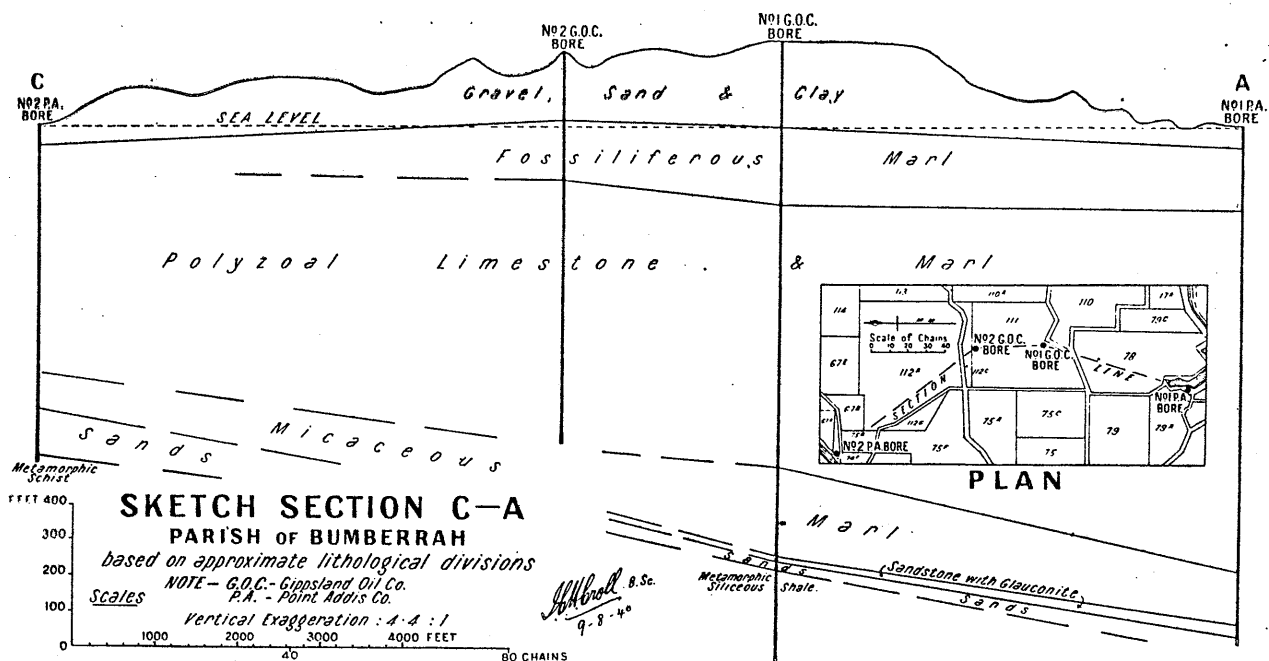
This company is holder of Petroleum Prospecting Licence No. 68, embracing an area of 10,227 acres between Lakes Entrance and Metung. The following notes on the prospecting activities are compiled from the reports supplied by the company to the Department supplemented by personal inspections, examination of the core samples, and some analyses made at the Mines Department laboratory. The accompanying section C-A shows the relation between the information gained by the company's two bores in the Parish of Bumberrah and that obtained by the Nos. 1 and 2 bores of the Point Addis Company (vide *Records of Boring Operations* 1923-30, pp. 35 and 116). The section indicates the existence of a very gentle southerly dip not exceeding about 3 deg. and rather less than that on the average.

No. 1 BORE. W 418. GIPPSLAND - 1

Drilling commenced at this bore, the site of which is shown on the plan, on 28th February, 1939, and at the present time is reported to have reached a depth of 1,766 feet. The surface level is 255 feet. Samples of the cores have been submitted to the Department as requested, and the following summary is based on an examination of the samples. (Note.—The depths are those shown on the sample labels.):—

To 250'	.. Sand and clay.
250'-463'	.. Shelly marl.
500'-1,200'	.. Polyzoal limestone.
1,216'-1,373'	.. Micaceous marl.
1,446'-1,458'	.. Grey-green soft sandstone with some glauconite.
1,458'-1,462'	.. Hard grey sandstone with a little glauconite.
1,462'-1,477'	.. Fine and coarse loosely compacted white quartz sand and clayey sand.
1,483'-1,484'	.. White quartz sand with chips of grey shale and sandstone.
1,484'	.. Grey siliceous metamorphic shale with fine quartz veinlets.
Below 1,484'	.. Samples of shale, or sand mixed with chips of shale.

235
Section
p. 116



It is quite clear from the samples that drilling beyond the depth of 1,484 feet, where the first definite bedrock sample was obtained, cannot be justified as far as the search for oil is concerned.

The glauconitic sandstone obtained in this bore at 1,446 to 1,458 feet is comparable with the Lakes Entrance material, but appears to contain more clay and less glauconite. Extraction tests for oil on several samples gave completely negative results. The hard sandstone from 1,458 to 1,462 feet is similar to that in the Nungurner bore (see above), and has been similarly grouped with the more typical glauconitic material in constructing the section. A slide of the hard sandstone at 1,460 feet shows it to consist of abundant grains of angular quartz of an average width of 0.2 mm., less abundant rounded grains of quartz up to 1.5 mm. diameter, biotite in various stages of alteration to chlorite and glauconite, pale green aggregates of glauconite, and some calcareous cementing material.

A number of fossils obtained from the loose sands below the glauconitic beds included several small well preserved sharks' teeth, fish scales, and some pyritic replacements of corals and mollusca.

Water.

The first water horizon was reported at 290 feet, but apparently no sample was taken until the bore had reached 705 feet. Analysis of a sample marked "705 feet" resulted as follows (Lab. No. 400/1939):—

Sodium.—165 parts per million—24 per cent.
 Chlorides.—250 parts per million—36 per cent.
 Sulphates.—Not tested.

Carbonates and bicarbonates.—96 parts per million—14 per cent.

Concentration.—690 parts per million.

This water has a lower concentration than the upper water at Lakes Entrance, but the proportions of the radicles present, as far as the analysis was carried, are approximately the same.

The lower water horizon was encountered in the vicinity of 1,462 feet, although the volume of water did not appear to be nearly as great as in many other bores. The surface level of this bore precludes the possibility of an artesian flow, and the water did not rise beyond 55 feet above sea level. Partial analysis of a sample of the lower water gave the following result:—

Chlorides.—830 parts per million—41 per cent.

Sulphates.—Nil.

Carbonates and bicarbonates.—640 parts per million—32 per cent.

Concentration.—2,020 parts per million.

The concentration in this case is somewhat higher than the Lakes Entrance lower water, but the chemical characteristics agree fairly closely, particularly in the entire absence of sulphates.

Gas.

A non-inflammable gas was reported at 175 feet, and analysis showed it to contain 11 per cent. of carbon dioxide and nitrogen, the remainder of the sample being air. Inflammable gas, probably methane, was recorded at various depths, and was in greatest abundance associated with the lower water.

Oil.

The company reported that the first traces of oil were obtained when drilling was in progress between 637 and 705 feet. At a depth stated to be 1,484 ft. 6 in. a faint film of oil was seen by me on the water brought up in the bailer while cleaning out after the first few inches of bedrock had been entered. While the bore was at the same depth the casing was pulled back and small quantities of oil were obtained, apparently from the sands immediately above bedrock where the company had reported "struck oil" at 1,482 feet. The occurrence of oil at the base of a series which here and elsewhere is completely saturated with water is most unusual.

No. 2 BORE. W430 GIPPSLAND-2

This bore is also situated in allotment 111, Parish of Bumberrahi, as shown on the accompanying plan, and operations commenced on 30th November, 1939. Surface level is 225 feet. The company's weekly reports indicate the following general sequence:—

- To 208' .. Sand, clay, and gravel.
- 208'-372' .. Shelly marl.
- 372'-1,106' .. Polyzoal limestone and marl.

The present depth is reported to be 1,106 feet, at which it is stated that the limit of the plant has been reached, but that arrangements will be made to continue operations when a heavier plant is available.

Water.

The company reported that the first (upper) water horizon was met at 208 feet, and a sample marked "216 feet" was analysed at the Mines Department laboratory with the following result (Lab. No. 323/1940):—

- Chlorides.—370 parts per million—32 per cent.
- Sulphates.—30 parts per million—3 per cent.
- Carbonates and bicarbonates.—310 parts per million—26 per cent.
- Concentration (including solids in suspension).—1,160 parts per million.

Allowing for the inclusion of suspended solids in the figure for concentration, the water is comparable in concentration to the Lakes Entrance upper water, but has a lower sulphate content.

Gas.

A sample of gas marked "1,083 feet" was analysed (499/400), and shown to contain:—

Carbon dioxide	Trace
Oxygen	1%
Nitrogen	51.1%
Methane	47.9%
	<hr/>
	100.0%

(The company has since stated that this sample was obtained from 1,738 feet in No. 1 bore.)

Gas was first reported at 500 feet, and at irregular intervals thereafter.

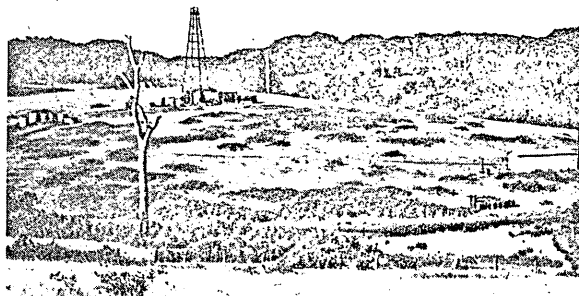
AUSTRAL OIL SYNDICATE.

FOSTERS BORE. W402

This bore was drilled in 1936 to a depth of 1,259 ft. 10 in., and some oil was produced by pumping. After a period of suspended operations during the time that the Imray bore was in progress, work was resumed at Fosters bore early in 1940, and an attempt has been made to shut off the water that was entering at the bottom of the bore. A cement plug was built up to 1,259 feet, and it is reported that bailing tests conducted since then indicate that at least a partial shut-off has been effected.

IMRAY BORE. W404

Bailing tests are conducted from time to time to determine the amounts of oil and water accumulating against the hydrostatic head of the fluid in the bore.



[Mona McLeod Photo.]

Fosters Bore, Lakes Entrance.

On 13th May and 13th July, 1940, I witnessed two of these tests, at which the results were as follows:—

	13th May.		13th July.	
Top of fluid column ..	481 feet from surface ..	388 feet from surface		
" " water column ..	1,174 " " ..	1,154 " " ..		
Depth of oil column ..	693 feet " " ..	886 feet " " ..		
" " water column ..	100 " " ..	120 " " ..		
Amount of oil ..	849 gallons ..	1,074 gallons		
" " water ..	122.5 " " ..	147 " " ..		
Time of accumulation ..	38 weeks, 4 days ..	47 weeks, 2 days		
Rate of accumulation—				
Oil	22.0 gallons per week	22.7 gallons per week		
	3.1 " " day ..	3.2 " " day		
Water	4.4 " " week	4.1 " " week		
	0.6 " " day ..	0.6 " " day.		

(NOTE.—The syndicate states that (a) the depth of the bore is 1,274 feet, (b) accumulation commenced on 17th August, 1939, and (c) 49 gallons of water were removed on 15th October, 1939.)

These figures suggest that my previous estimate of the formation pressure (vide Mining and Geological Journal, Vol. 2, No. 1, July, 1939, p. 64) was too low, as the rise of the fluid to a height of more than 800 feet in the bore cannot be accounted for by the pressure of artesian water, which apparently has not yet entered the bore. [16.7.1940.]

State Labs. Rept. 1940/323.

Date 3/5/1940.

Water from Giffordland Oil Co No 2 bore
at 216 feet.

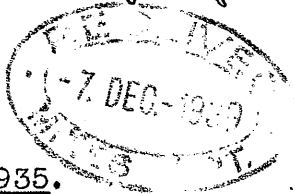
	P.P. 100,000.	gr/gall.
Total Solids (including Solids in Suspension)	116	81
Chlorides	37	26
Sulphates	3	2
Carbonates	nil	nil
Bicarbonates	31	22
Calcium oxide	2	1.4
Magnesium oxide	1	0.7.

J. L. Wilson

3.0 WEEKLY DRILLING REPORTS

MINES DEPARTMENT.
Victoria.

W430



MINES (PETROLEUM) ACT 1935.
Section 45.

Record of work at Gippsland Oil Company NO. 2 bore on
* ~~Petroleum Prospecting Licence~~ Number 68 during week
~~Petroleum Mineral Lease~~
ending December 2nd, 1939

Depth	Description of Strata
6	0-70-Yellow and grey mottler sandy clay.
80	70-80-Soft grey sandstone.

This bore was spudded in on November, 30th., 1939.

Notes by Driller in Charge (State in notes, whether water, gas, or petroleum has been met with, and, if so, give depth and nature of occurrence, also depth to which casing has been inserted and cemented. N.B. The Act also requires the Minister to be notified immediately water, gas, or petroleum is encountered.)

Signed J. O. Whelan
Legal Manager GIPPSLAND OIL COMPANY LIMITED Coy
Date 5.12.1.39

* Strike out words not applicable.

Analyses of water, gas and oil should be submitted if available.

EXTRACT FROM MINES (PETROLEUM) ACT 1935.

Section 19. (1) (a) The holder of a licence shall employ in drilling operations only such methods of drilling as are capable of yielding a core or other samples as is or are prescribed or is or are approved by the Minister.

(b) All cores or samples so obtained shall be preserved by the holder of the licence for a period of not less than twelve months.

(2) In the event of water associated with a petroleum deposit being encountered in the course of drilling operations, the holder of the licence shall immediately report the same in writing to the Minister and state the steps taken to deal with it.

(3) In the event of the continuance of drilling operations after water has been encountered as aforesaid, the holder of the licence shall shut off all water so encountered and take such other steps as may be prescribed.

(4) In the event of traces of petroleum, including natural gas, appearing during drilling operations, the holder of the licence shall immediately report the same to the Minister, and shall carry out such operations to test the extent and value of the occurrence of such petroleum as may be approved by the Minister.

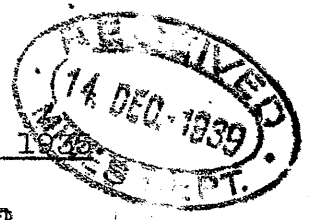
(5) In the event of preliminary tests indicating the probability of payable petroleum, the holder of the licence shall -

(a) immediately report thereon to the Minister in writing; and

(b) carry out thereafter such operations as may be necessary to test the value of the occurrence of such petroleum as may be approved by the Minister.

Section 48. Every licensee and every lessee, unless in any case wholly or partially excused from so doing by the Minister, shall properly case each well with casing in accordance with the best approved methods, landing and effectually cementing one or more strings of the casing in clay or other water-impervious strata or formation between all water-bearing sands or strata and any underlying petroleum deposit, and generally shall take all such steps as are reasonably necessary for effectually shutting off all water overlying and underlying the petroleum deposits, and for effectually preventing any water from penetrating such petroleum deposits.

MINES DEPARTMENT.
Victoria.



M I N E S (P E T R O L E U M) A C T
Section 45.

Record of work at Gippsland Oil Company NO 2 bore on
* ~~Petroleum~~ ~~Prospecting~~ ~~Licence~~ ~~Number~~ 68 during week
~~Petroleum-Mineral-Lease~~
ending December 9th 19 39.....

Depth	Description of Strata
80	80 -84 -Soft grey sandstone.
	84 -208-Sandy yellow clay.
	208- -First appearance of shells.Also 2 gals.water per hour.
	208-216-Yellow sandy clay with abundant shells.
262	216-262-Grey marl rich in shells.

Two shifts working.Contractors promise third shift this week.

[Handwritten signature]

Notes by Driller in Charge (State in notes, whether water, gas, or petroleum has been met with, and, if so, give depth and nature of occurrence, also depth to which casing has been inserted and cemented. N.B. The Act also requires the Minister to be notified immediately water, gas, or petroleum is encountered.)

At 208 foot a seepage of water was encountered.At 220 foot water came in freely.Sample of same has been taken and will be forwarded to your Dept. for analysis.

Bore cased with 8" casing to 134 foot.

[Handwritten signature]

Signed *Russ Courtney, Asst. Secy*

Legal Manager *J.S.P. Coy*
Date *13.12.39*

* Strike out words not applicable.

Analyses of water, gas and oil should be submitted if available.

EXTRACT FROM MINES (PETROLEUM) ACT 1935.

Section 19. (1) (a) The holder of a licence shall employ in drilling operations only such methods of drilling as are capable of yielding a core or other samples as is or are prescribed or is or are approved by the Minister.

(b) All cores or samples so obtained shall be preserved by the holder of the licence for a period of not less than twelve months.

(2) In the event of water associated with a petroleum deposit being encountered in the course of drilling operations, the holder of the licence shall immediately report the same in writing to the Minister and state the steps taken to deal with it.

(3) In the event of the continuance of drilling operations after water has been encountered as aforesaid, the holder of the licence shall shut off all water so encountered and take such other steps as may be prescribed.

(4) In the event of traces of petroleum, including natural gas, appearing during drilling operations, the holder of the licence shall immediately report the same to the Minister, and shall carry out such operations to test the extent and value of the occurrence of such petroleum as may be approved by the Minister.

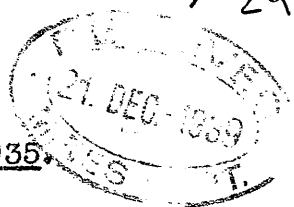
(5) In the event of preliminary tests indicating the probability of payable petroleum, the holder of the licence shall -

(a) immediately report thereon to the Minister in writing; and

(b) carry out thereafter such operations as may be necessary to test the value of the occurrence of such petroleum as may be approved by the Minister.

Section 48. Every licensee and every lessee, unless in any case wholly or partially excused from so doing by the Minister, shall properly case each well with casing in accordance with the best approved methods, landing and effectually cementing one or more strings of the casing in clay or other water-imperious strata or formation between all water-bearing sands or strata and any underlying petroleum deposit, and generally shall take all such steps as are reasonably necessary for effectually shutting off all water overlying and underlying the petroleum deposits, and for effectually preventing any water from penetrating such petroleum deposits.

MINES DEPARTMENT.
Victoria.



MINES (PETROLEUM) ACT 1935.
Section 45.

Record of work at Gippsland Oil Company No 2 bore on
* Petroleum Prospecting Licence Number 68 during week
Petroleum Mineral Lease
ending December 16 1939.

Depth Description of Strata

262 262 - Shell band
262-310 - Grey Shelly marl
310-355 - Brown shelly marl with sand
Formation caving badly. 6" casing
which has arrived on the field will now be
run.

[Signature]

- 1. Mr Brown ✓ 21/12
- 2. Mr Waite ✓ 21/12
- 3. Mr Bull ✓ 21/12/39

Notes by Driller in Charge (State in notes, whether water, gas, or petroleum has been met with, and, if so, give depth and nature of occurrence, also depth to which casing has been inserted and cemented. N.B. The Act also requires the Minister to be notified immediately water, gas, or petroleum is encountered.)

8" casing run to 271'-11"
[Signature]

Signed *[Signature]*
GIPPSLAND OIL COMPANY LIMITED
Legal Manager 115 QUEEN ST. MELBOURNE
Date

* Strike out words not applicable.
Analyses of water, gas and oil should be submitted if available.

EXTRACT FROM MINES (PETROLEUM) ACT 1935.

Section 19. (1) (a) The holder of a licence shall employ in drilling operations only such methods of drilling as are capable of yielding a core or other samples as is or are prescribed or is or are approved by the Minister.

(b) All cores or samples so obtained shall be preserved by the holder of the licence for a period of not less than twelve months.

(2) In the event of water associated with a petroleum deposit being encountered in the course of drilling operations, the holder of the licence shall immediately report the same in writing to the Minister and state the steps taken to deal with it.

(3) In the event of the continuance of drilling operations after water has been encountered as aforesaid, the holder of the licence shall shut off all water so encountered and take such other steps as may be prescribed.

(4) In the event of traces of petroleum, including natural gas, appearing during drilling operations, the holder of the licence shall immediately report the same to the Minister, and shall carry out such operations to test the extent and value of the occurrence of such petroleum as may be approved by the Minister.

(5) In the event of preliminary tests indicating the probability of payable petroleum, the holder of the licence shall -

(a) immediately report thereon to the Minister in writing; and

(b) carry out thereafter such operations as may be necessary to test the value of the occurrence of such petroleum as may be approved by the Minister.

Section 48. Every licensee and every lessee, unless in any case wholly or partially excused from so doing by the Minister, shall properly case each well with casing in accordance with the best approved methods, landing and effectually cementing one or more strings of the casing in clay or other water-impervious strata or formation between all water-bearing sands or strata and any underlying petroleum deposit, and generally shall take all such steps as are reasonably necessary for effectually shutting off all water overlying and underlying the petroleum deposits, and for effectually preventing any water from penetrating such petroleum deposits.

4/29



MINES DEPARTMENT.
Victoria.

MINES (PETROLEUM) ACT 1935.
Section 45.

Record of work at Gippsland Oil Co. No. 2 bore on
* Petroleum Prospecting Licence Number 68 during week
Petroleum Mineral Lease
ending 23-12-39 19.....

Depth	Description of Strata
355	355-372 - Brown micaceous shelly marl.
	372-490 - white friable Polyzoal limestone.
500	490-500 - cream colored Polyzoal limy marl.
	G.P.

Notes by Driller in Charge (State in notes, whether water, gas, or petroleum has been met with, and, if so, give depth and nature of occurrence, also depth to which casing has been inserted and cemented. N.B. The Act also requires the Minister to be notified immediately water, gas, or petroleum is encountered.)

6" casing run to 463 foot

[Signature]

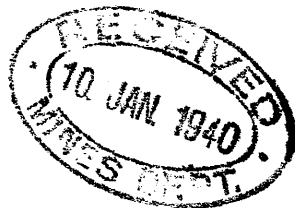
GIPPSLAND OIL COMPANY LIMITED

..... Director
Signed *[Signature]* Secretary
Legal Manager Coy
Date 9.1.1.40

* Strike out words not applicable.

Analyses of water, gas and oil should be submitted if available.

5/29



MINES DEPARTMENT.
Victoria.

MINES (PETROLEUM) ACT 1935.
Section 45.

Record of work at Gippsland Oil Co. No. 2 bore on
* ~~Petroleum Prospecting Licence~~ Petroleum Mineral Lease Number 68 during week
ending 30.12.39 19.....

Depth	Description of Strata
-------	-----------------------

No operations due to Holidays.

Notes by Driller in Charge (State in notes, whether water, gas, or petroleum has been met with, and, if so, give depth and nature of occurrence, also depth to which casing has been inserted and cemented. N.B. The Act also requires the Minister to be notified immediately water, gas, or petroleum is encountered.)

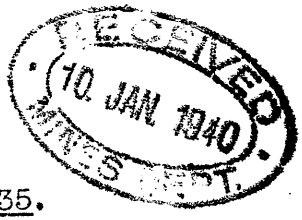
GIPPSLAND OIL COMPANY LIMITED

..... Director
 Signed J. D. W. [Signature] Secretary
 Legal Manager Coy
 Date 9.1.1.40

* Strike out words not applicable.

Analyses of water, gas and oil should be submitted if available.

6/29



MINES DEPARTMENT.
Victoria.

M I N E S (P E T R O L E U M) A C T 1935.
Section 45.

Record of work at Gippsland Oil Co. No. 2 bore on
~~* Petroleum Prospecting Licence~~ Number 68 during week
~~Petroleum Mineral Lease~~
ending 6.1.40 1940

Depth Description of Strata

work was resumed on 4-1-40.

6" casing is being withdrawn for examination

After casing had been run it became jammed, evidently by a piece of rock. A 58 Ton Pull was necessary to free it. Casing was quit free after being pulled two feet; But believe it wise to pull all of it and examine.

W.H.

Notes by Driller in Charge (State in notes, whether water, gas, or petroleum has been met with, and, if so, give depth and nature of occurrence, also depth to which casing has been inserted and cemented. N.B. The Act also requires the Minister to be notified immediately water, gas, or petroleum is encountered.)

W.H.

GIPPSLAND OIL COMPANY LIMITED

..... Director

Signed *[Signature]* Secretary..

Legal Manager Coy

Date 4.1.1.40

* Strike out words not applicable.

Analyses of water, gas and oil should be submitted if available.

MINES DEPARTMENT.
Victoria.

7/29
RECEIVED
18 JAN 1940
MELBOURNE

M I N E S (P E T R O L E U M) A C T 1935,
Section 45.

Record of work at Gippsland Oil Companies... NO. 1... bore on
* ~~Petroleum Prospecting Licence~~ Number 68..... during week
~~Petroleum Mineral Lease~~
ending .January..13th..... 1940.....

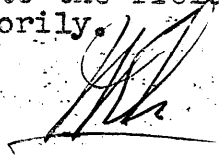
Depth Description of Strata

500 feet.

During the week, the 6" casing which was not as free as is necessary, was withdrawn from the bore for inspection. This being found alright the bore was under-reamed to the bottom and the casing re-run to 494' 8". At this depth the casing was hand free. Drilling will now be resumed.

All men not having had returned from their holidays, only one shift was operating.

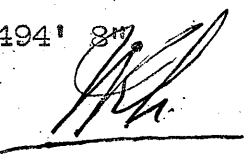
All men have now returned to the field and work on both bores should proceed satisfactorily.




Notes by Driller in Charge (State in notes, whether water, gas, or petroleum has been met with, and, if so, give depth and nature of occurrence, also depth to which casing has been inserted and cemented. N.B. The Act also requires the Minister to be notified immediately water, gas, or petroleum is encountered.)

8" casing run to 318' 10"

6" casing run to 494' 8"



Signed 
GIPPSLAND OIL COMPANY LIMITED
Legal Manager QUEEN ST. MELBOURNE Coy
Date 18/1/40

* Strike out words not applicable.

Analyses of water, gas and oil should be submitted if available.

MINES DEPARTMENT.
Victoria.

8/29
RECEIVED
25 JAN 1940
1935
G.M.

MINES (PETROLEUM) ACT
Section 45.

Record of work at Gippsland Oil Company NO. 1 bore on
* Petroleum Prospecting Licence Number ... 63 during week
~~- Petroleum-Mineral-Lease -~~
ending January, 20 1940

Depth	Description of Strata
500	500-550-Polyzoal limy marl with abundant shells and some fragmental limestone. 550-575-Greyish green shelly marl. Large shells are in a state of deterioration and cannot be taken from the core without crumbling.

J.H.L.

Notes by Driller in Charge (State in notes, whether water, gas, or petroleum has been met with, and, if so, give depth and nature of occurrence, also depth to which casing has been inserted and cemented. N.B. The Act also requires the Minister to be notified immediately water, gas, or petroleum is encountered.)

6" casing run to 554' 2".
Gas has started to make its appearance.

J.H.L.

Signed
Legal Manager
GIPPSLAND OIL COMPANY LIMITED
115 QUEEN ST. MELBOURNE Coy
Date
24 1 40.

* Strike out words not applicable.
Analyses of water, gas and oil should be submitted if available.

EXTRACT FROM MINES (PETROLEUM) ACT 1935.

Section 19. (1) (a) The holder of a licence shall employ in drilling operations only such methods of drilling as are capable of yielding a core or other samples as is or are prescribed or is or are approved by the Minister.

(b) All cores or samples so obtained shall be preserved by the holder of the licence for a period of not less than twelve months.

(2) In the event of water associated with a petroleum deposit being encountered in the course of drilling operations, the holder of the licence shall immediately report the same in writing to the Minister and state the steps taken to deal with it.

(3) In the event of the continuance of drilling operations after water has been encountered as aforesaid, the holder of the licence shall shut off all water so encountered and take such other steps as may be prescribed.

(4) In the event of traces of petroleum, including natural gas, appearing during drilling operations, the holder of the licence shall immediately report the same to the Minister, and shall carry out such operations to test the extent and value of the occurrence of such petroleum as may be approved by the Minister.

(5) In the event of preliminary tests indicating the probability of payable petroleum, the holder of the licence shall -

(a) immediately report thereon to the Minister in writing; and

(b) carry out thereafter such operations as may be necessary to test the value of the occurrence of such petroleum as may be approved by the Minister.

Section 48. Every licensee and every lessee, unless in any case wholly or partially excused from so doing by the Minister, shall properly case each well with casing in accordance with the best approved methods, landing and effectually cementing one or more strings of the casing in clay or other water-impervious strata or formation between all water-bearing sands or strata and any underlying petroleum deposit, and generally shall take all such steps as are reasonably necessary for effectually shutting off all water overlying and underlying the petroleum deposits, and for effectually preventing any water from penetrating such petroleum deposits.

9/29

MINES DEPARTMENT.
Victoria.

M I N E S (P E T R O L E U M) A C T 1935.
Section 45.

Record of work at Gippsland Oil Company NO 12 bore on
* Petroleum Prospecting Licence Number 68 during week
~~Petroleum Mineral Lease~~
ending ... January 27 19 40



Depth	Description of Strata
575	575-590-Greenish grey shelly polyzoal mar. 590-625-Grey polyzoal shelly marl, puggy.
	625-675-Greenish grey shelly marl with granular limestone.
715	675-715-Grey sandy shelly marl.

No drilling progress is anticipated for this coming week as the plant is being reconstructed in order to increase its capacity.

New casing handling equipment, and new engine are being installed.

No Contract ✓
Mr March ✓
Mr. Wall. ✓

Notes by Driller in Charge (State in notes, whether water, gas, or petroleum has been met with, and, if so, give depth and nature of occurrence, also depth to which casing has been inserted and cemented. N.B. The Act also requires the Minister to be notified immediately water, gas, or petroleum is encountered.)

Signed *J. O. Kelly*
GIPPSLAND OIL COMPANY LIMITED
Legal Manager
Date *1.2.40*

* Strike out words not applicable.

Analyses of water, gas and oil should be submitted if available.

EXTRACT FROM MINES (PETROLEUM) ACT 1935.

Section 19. (1) (a) The holder of a licence shall employ in drilling operations only such methods of drilling as are capable of yielding a core or other samples as is or are prescribed or is or are approved by the Minister.

(b) All cores or samples so obtained shall be preserved by the holder of the licence for a period of not less than twelve months.

(2) In the event of water associated with a petroleum deposit being encountered in the course of drilling operations, the holder of the licence shall immediately report the same in writing to the Minister and state the steps taken to deal with it.

(3) In the event of the continuance of drilling operations after water has been encountered as aforesaid, the holder of the licence shall shut off all water so encountered and take such other steps as may be prescribed.

(4) In the event of traces of petroleum, including natural gas, appearing during drilling operations, the holder of the licence shall immediately report the same to the Minister, and shall carry out such operations to test the extent and value of the occurrence of such petroleum as may be approved by the Minister.

(5) In the event of preliminary tests indicating the probability of payable petroleum, the holder of the licence shall -

(a) immediately report thereon to the Minister in writing; and

(b) carry out thereafter such operations as may be necessary to test the value of the occurrence of such petroleum as may be approved by the Minister.

Section 48. Every licensee and every lessee, unless in any case wholly or partially excused from so doing by the Minister, shall properly case each well with casing in accordance with the best approved methods, landing and effectually cementing one or more strings of the casing in clay or other water-impervious strata or formation between all water-bearing sands or strata and any underlying petroleum deposit, and generally shall take all such steps as are reasonably necessary for effectually shutting off all water overlying and underlying the petroleum deposits, and for effectually preventing any water from penetrating such petroleum deposits.

MINES DEPARTMENT.
Victoria.

MINES (PETROLEUM) ACT 1935.
Section 45.

Record of work atGippsland Oil Company..NO.2..... bore on
* Petroleum Prospecting Licence Number68..... during week
~~Petroleum Mineral Lease~~
ending ...February 3rd..... 19 40.....

Depth

Description of Strata

As anticipated in last weeks report, no drilling operations were carried out this week due to the re-construction of the plant. At this time the job is nearing completion and drilling should be resumed about the middle of this week.

[Handwritten signature]



Notes by Driller in Charge (State in notes, whether water, gas, or petroleum has been met with, and, if so, give depth and nature of occurrence, also depth to which casing has been inserted and cemented. N.B. The Act also requires the Minister to be notified immediately water, gas, or petroleum is encountered.)

[Handwritten signature]

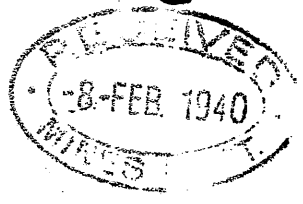
Signed *[Signature]*

Legal Manager **GIPPSLAND OIL COMPANY LIMITED** Coy

Date/...../.....

* Strike out words not applicable.

Analyses of water, gas and oil should be submitted if available.



EXTRACT FROM MINES (PETROLEUM) ACT 1935.

Section 19. (1) (a) The holder of a licence shall employ in drilling operations only such methods of drilling as are capable of yielding a core or other samples as is or are prescribed or is or are approved by the Minister.

(b) All cores or samples so obtained shall be preserved by the holder of the licence for a period of not less than twelve months.

(2) In the event of water associated with a petroleum deposit being encountered in the course of drilling operations, the holder of the licence shall immediately report the same in writing to the Minister and state the steps taken to deal with it.

(3) In the event of the continuance of drilling operations after water has been encountered as aforesaid, the holder of the licence shall shut off all water so encountered and take such other steps as may be prescribed.

(4) In the event of traces of petroleum, including natural gas, appearing during drilling operations, the holder of the licence shall immediately report the same to the Minister, and shall carry out such operations to test the extent and value of the occurrence of such petroleum as may be approved by the Minister.

(5) In the event of preliminary tests indicating the probability of payable petroleum, the holder of the licence shall -

(a) immediately report thereon to the Minister in writing; and

(b) carry out thereafter such operations as may be necessary to test the value of the occurrence of such petroleum as may be approved by the Minister.

Section 48. Every licensee and every lessee, unless in any case wholly or partially excused from so doing by the Minister, shall properly case each well with casing in accordance with the best approved methods, landing and effectually cementing one or more strings of the casing in clay or other water-impervious strata or formation between all water-bearing sands or strata and any underlying petroleum deposit, and generally shall take all such steps as are reasonably necessary for effectually shutting off all water overlying and underlying the petroleum deposits, and for effectually preventing any water from penetrating such petroleum deposits.

RECEIVED 16-FEB 1940
MINES DEPT. 29

MINES DEPARTMENT.
Victoria.

M I N E S (P E T R O L E U M) A C T 1935.
Section 45.

Record of work at Gippsland Oil Company... NO. 2..... bore on
* Petroleum Prospecting Licence Number 68..... during week
~~--Petroleum-Mineral-Lease--~~
ending ... February. 10th..... 1940.....

Depth	Description of Strata
715	715-750-Granular limestone, greyish green, with shells.
760	750-760-White granular limestone and shell.

Operations were resumed on Thursday. The reconstruction of the plant has been completed except for the engine, which will not arrive until the end of this week. Bore is being operated until that time with the old engine.

[Handwritten signature]

- 1. ~~Secretary~~ ✓
- 2. ~~Mr. Smith~~ ✓
- 3. Mr. Coll.

Notes by Driller in Charge (State in notes, whether water, gas, or petroleum has been met with, and, if so, give depth and nature of occurrence, also depth to which casing has been inserted and cemented. N.B. The Act also requires the Minister to be notified immediately water, gas, or petroleum is encountered.)

6" casing run to 725 feet.

Gas showing in bore.

[Handwritten signature]

[Handwritten signature]

Signed

Legal Manager Coy
Date/...../.....

* Strike out words not applicable.

Analyses of water, gas and oil should be submitted if available.

EXTRACT FROM MINES (PETROLEUM) ACT 1935.

Section 19. (1) (a) The holder of a licence shall employ in drilling operations only such methods of drilling as are capable of yielding a core or other samples as is or are prescribed or is or are approved by the Minister.

(b) All cores or samples so obtained shall be preserved by the holder of the licence for a period of not less than twelve months.

(2) In the event of water associated with a petroleum deposit being encountered in the course of drilling operations, the holder of the licence shall immediately report the same in writing to the Minister and state the steps taken to deal with it.

(3) In the event of the continuance of drilling operations after water has been encountered as aforesaid, the holder of the licence shall shut off all water so encountered and take such other steps as may be prescribed.

(4) In the event of traces of petroleum, including natural gas, appearing during drilling operations, the holder of the licence shall immediately report the same to the Minister, and shall carry out such operations to test the extent and value of the occurrence of such petroleum as may be approved by the Minister.

(5) In the event of preliminary tests indicating the probability of payable petroleum, the holder of the licence shall -

(a) immediately report thereon to the Minister in writing; and

(b) carry out thereafter such operations as may be necessary to test the value of the occurrence of such petroleum as may be approved by the Minister.

Section 48. Every licensee and every lessee, unless in any case wholly or partially excused from so doing by the Minister, shall properly case each well with casing in accordance with the best approved methods, landing and effectually cementing one or more strings of the casing in clay or other water-impervious strata or formation between all water-bearing sands or strata and any underlying petroleum deposit, and generally shall take all such steps as are reasonably necessary for effectually shutting off all water overlying and underlying the petroleum deposits, and for effectually preventing any water from penetrating such petroleum deposits.

23-FEB 1940
MINES

12/29

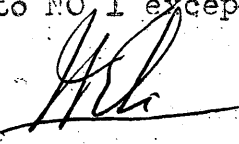
MINES DEPARTMENT.
Victoria.

M I N E S (P E T R O L E U M) A C T 1935.
Section 45.

Record of work atGippsland Oil Company NO.2.... bore on
* ~~Petroleum~~ ~~Prospecting~~ ~~Licence~~ ~~Number~~62..... during week
~~Petroleum~~ ~~Mineral~~ ~~Lease~~
ending17./2./40..... 19

Depth	Description of Strata
760	760-785-Polyzoal lime with shells.Slightly cemented. 785-800-Blueish green polyzoal marl.Sticky.

This bore is very similar to NO 1 except that it shows a rise of approximately 130 feet.

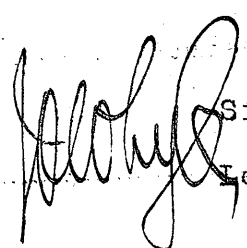
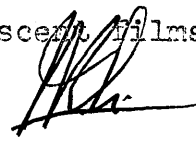


- 1. ~~to ...~~
- 2. ~~to ...~~ ✓
- 3. to Crull.

Notes by Driller in Charge (State in notes, whether water, gas, or petroleum has been met with, and, if so, give depth and nature of occurrence, also depth to which casing has been inserted and cemented. N.B. The Act also requires the Minister to be notified immediately water, gas, or petroleum is encountered.)

Bore cased with 6" casing to 767 feet.

Gas showing and irridescent films on trench.



Signed

Legal Manager..... Coy

Date / /

* Strike out words not applicable.

Analyses of water, gas and oil should be submitted if available.

EXTRACT FROM MINES (PETROLEUM) ACT 1935.

Section 19. (1) (a) The holder of a licence shall employ in drilling operations only such methods of drilling as are capable of yielding a core or other samples as is or are prescribed or is or are approved by the Minister.

(b) All cores or samples so obtained shall be preserved by the holder of the licence for a period of not less than twelve months.

(2) In the event of water associated with a petroleum deposit being encountered in the course of drilling operations, the holder of the licence shall immediately report the same in writing to the Minister and state the steps taken to deal with it.

(3) In the event of the continuance of drilling operations after water has been encountered as aforesaid, the holder of the licence shall shut off all water so encountered and take such other steps as may be prescribed.

(4) In the event of traces of petroleum, including natural gas, appearing during drilling operations, the holder of the licence shall immediately report the same to the Minister, and shall carry out such operations to test the extent and value of the occurrence of such petroleum as may be approved by the Minister.

(5) In the event of preliminary tests indicating the probability of payable petroleum, the holder of the licence shall -

(a) immediately report thereon to the Minister
in writing; and

(b) carry out thereafter such operations as
may be necessary to test the value of
the occurrence of such petroleum as may
be approved by the Minister.

Section 48. Every licensee and every lessee, unless in any case wholly or partially excused from so doing by the Minister, shall properly case each well with casing in accordance with the best approved methods, landing and effectually cementing one or more strings of the casing in clay or other water-impervious strata or formation between all water-bearing sands or strata and any underlying petroleum deposit, and generally shall take all such steps as are reasonably necessary for effectually shutting off all water overlying and underlying the petroleum deposits, and for effectually preventing any water from penetrating such petroleum deposits.

13/29
APR

MINES DEPARTMENT.
Victoria.

MINES (PETROLEUM) ACT 1935.
Section 45.

Record of work at ...Gippsland Oil Company...NO. 2 bore on
* Petroleum Prospecting Licence Number ...68... during week
Petroleum Mineral Lease
ending ...February...24th... 19.40.....

Depth	Description of Strata
800	800- Greyish blue foraminiferal limy marl. very luggy.

aaaaaaaaaaaaaaaaaaaaaaaaaaaa
~~cccccccccccccccccccccccccccc~~

J. R. [Signature]

- 1. [Signature]*
- 2. de Waelder*
- 3. de Croll*

Notes by Driller in Charge (State in notes whether water, gas or petroleum has been met with, and, if so, give depth and nature of occurrence, also depth to which casing has been inserted and cemented. N.B. The Act also requires the Minister to be notified immediately water, gas, or petroleum is encountered.)

Signed
Legal Manager Coy.
Date/...../.....

* Strike out words not applicable.
Analyses of water, gas and oil should be submitted if available.

EXTRACT FROM THE MINES (PETROLEUM) ACT 1935,
AS AMENDED BY THE MINES (PETROLEUM) ACT 1939.

Section 19. (1) The holder of a licence shall employ in drilling operations only such methods of drilling as are capable of yielding a core or other samples as is or are prescribed or is or are approved by the Minister.

(2) In the event of water associated with a petroleum deposit being encountered in the course of drilling operations, the holder of the licence shall immediately report the same in writing to the Minister and state the steps taken to deal with it.

(3) In the event of the continuance of drilling operations after water has been encountered as aforesaid, the holder of the licence shall shut off all water so encountered and take such other steps as may be prescribed.

(4) In the event of traces of petroleum, including natural gas, appearing during drilling operations, the holder of the licence shall immediately report the same to the Minister, and shall carry out such operations to test the extent and value of the occurrence of such petroleum as the Minister by notice in writing directs.

(5) In the event of preliminary tests indicating the probability of payable petroleum, the holder of the licence shall -

- (a) immediately report thereon to the Minister in writing; and
- (b) carry out thereafter such operations as may be necessary to test the value of the occurrence of such petroleum as may be approved by the Minister.

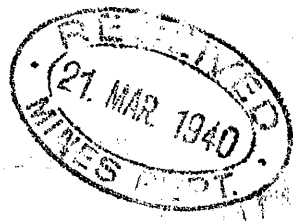
Section 48. Every licensee and every lessee, unless in any case wholly or partially excused from so doing by the Minister, shall properly case each well with casing in accordance with the best approved methods, landing and effectually cementing one or more strings of the casing in clay or other water-impervious strata or formation between all water-bearing sands or strata and any underlying petroleum deposit, and generally shall take all such steps as are reasonably necessary for effectually shutting off all water overlying and underlying the petroleum deposits, and for effectually preventing any water from penetrating such petroleum deposits.

EXTRACT FROM THE MINES (PETROLEUM) ACT 1939.

Section 7 (6). Every licensee shall -

- (a) retain for a period of not less than twelve months all cores obtained by drilling and representative samples of other specimens obtained from the land and, when so required by the Minister, forward the same to the Minister.

14/29



MINES DEPARTMENT.
Victoria.

M I N E S (P E T R O L E U M) A C T 1935.
Section 45.

Record of work at Gippsland Oil Company NO 2 bore on

* Petroleum Prospecting Licence Number 68 during week
~~Petroleum Mineral Lease~~

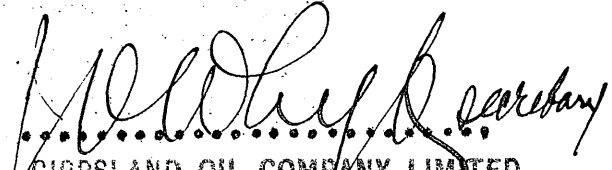
ending March 2nd 1940

Depth Description of Strata

827
858

827-858- Polyzoal marl with fragmental limestone and shells.

Notes by Driller in Charge (State in notes whether water, gas or petroleum has been met with, and, if so, give depth and nature of occurrence, also depth to which casing has been inserted and cemented. N.B. The Act also requires the Minister to be notified immediately water, gas, or petroleum is encountered.)

Signed 
Legal Manager GIPPSLAND OIL COMPANY LIMITED Coy.
Date 20.3.40 Director

* Strike out words not applicable.

Analyses of water, gas and oil should be submitted if available.

EXTRACT FROM THE MINES (PETROLEUM) ACT 1935,

AS AMENDED BY THE MINES (PETROLEUM) ACT 1939.

Section 19. (1) The holder of a licence shall employ in drilling operations only such methods of drilling as are capable of yielding a core or other samples as is or are prescribed or is or are approved by the Minister.

(2) In the event of water associated with a petroleum deposit being encountered in the course of drilling operations, the holder of the licence shall immediately report the same in writing to the Minister and state the steps taken to deal with it.

(3) In the event of the continuance of drilling operations after water has been encountered as aforesaid, the holder of the licence shall shut off all water so encountered and take such other steps as may be prescribed.

(4) In the event of traces of petroleum, including natural gas, appearing during drilling operations, the holder of the licence shall immediately report the same to the Minister, and shall carry out such operations to test the extent and value of the occurrence of such petroleum as the Minister by notice in writing directs.

(5) In the event of preliminary tests indicating the probability of payable petroleum, the holder of the licence shall -

- (a) immediately report thereon to the Minister in writing; and
- (b) carry out thereafter such operations as may be necessary to test the value of the occurrence of such petroleum as may be approved by the Minister.

Section 48. Every licensee and every lessee, unless in any case wholly or partially excused from so doing by the Minister, shall properly case each well with casing in accordance with the best approved methods, landing and effectually cementing one or more strings of the casing in clay or other water-impervious strata or formation between all water-bearing sands or strata and any underlying petroleum deposit, and generally shall take all such steps as are reasonably necessary for effectually shutting off all water overlying and underlying the petroleum deposits, and for effectually preventing any water from penetrating such petroleum deposits.

EXTRACT FROM THE MINES (PETROLEUM) ACT 1939.

Section 7 (6). Every licensee shall -

- (a) retain for a period of not less than twelve months all cores obtained by drilling and representative samples of other specimens obtained from the land and, when so required by the Minister, forward the same to the Minister.



MINES DEPARTMENT.
Victoria.

M I N E S (P E T R O L E U M) A C T 1935.
Section 45.

Record of work at Gippsland Oil Company NO. 2 bore on

~~Petroleum Prospecting Licence~~ Number 68 during week
~~Petroleum Mineral Lease~~
ending March 9th 1940

Depth Description of Strata

858	858-860- Bluish grey foraminiferal marl
	860-863- Hard white limestone with corals.
875	863-875- Greenish grey polyzoal limy marl with shells.

Lost $1\frac{1}{2}$ days drilling while installing engine.

Notes by Driller in Charge (State in notes whether water, gas or petroleum has been met with; and, if so, give depth and nature of occurrence, also depth to which casing has been inserted and cemented. N.B. The Act also requires the Minister to be notified immediately water, gas, or petroleum is encountered.)

Bore cased with 6" casing to 827 feet.

Signed J. White secretary

Legal Manager GIPPSLAND OIL COMPANY LIMITED

Date 20.3.40 Director

* Strike out words not applicable. Secretary.

Analyses of water, gas and oil should be submitted if available.

EXTRACT FROM THE MINES (PETROLEUM) ACT 1935,

AS AMENDED BY THE MINES (PETROLEUM) ACT 1939.

Section 19. (1) The holder of a licence shall employ in drilling operations only such methods of drilling as are capable of yielding a core or other samples as is or are prescribed or is or are approved by the Minister.

(2) In the event of water associated with a petroleum deposit being encountered in the course of drilling operations, the holder of the licence shall immediately report the same in writing to the Minister and state the steps taken to deal with it.

(3) In the event of the continuance of drilling operations after water has been encountered as aforesaid, the holder of the licence shall shut off all water so encountered and take such other steps as may be prescribed.

(4) In the event of traces of petroleum, including natural gas, appearing during drilling operations, the holder of the licence shall immediately report the same to the Minister, and shall carry out such operations as to test the extent and value of the occurrence of such petroleum as the Minister by notice in writing directs.

(5) In the event of preliminary tests indicating the probability of payable petroleum, the holder of the licence shall -

(a) immediately report thereon to the Minister in writing; and

(b) carry out thereafter such operations as may be necessary to test the value of the occurrence of such petroleum as may be approved by the Minister.

Section 48. Every licensee and every lessee, unless in any case wholly or partially excused from so doing by the Minister, shall properly case each well with casing in accordance with the best approved methods, landing and effectually cementing one or more strings of the casing in clay or other water-impervious strata or formation between all water-bearing sands or strata and any underlying petroleum deposit, and generally shall take all such steps as are reasonably necessary for effectually shutting off all water overlying and underlying the petroleum deposits, and for effectually preventing any water from penetrating such petroleum deposits.

EXTRACT FROM THE MINES (PETROLEUM) ACT 1939.

Section 7 (6). Every licensee shall -

(a) retain for a period of not less than twelve months all cores obtained by drilling and representative samples of other specimens obtained from the land and, when so required by the Minister, forward the same to the Minister.

16/29



MINES DEPARTMENT.
Victoria.

M I N E S (P E T R O L E U M) A C T 1935.
Section 45.

Record of work at ... Gippsland Oil Company NO. 2 bore on

* Petroleum Prospecting Licence Number ... 63 ... during week
~~Petroleum Mineral Lease~~
ending ... March, 16th ... 1940 ...

Depth Description of Strata

375
900

875-890- Grey polyzoal shelly marl. Puggy.
890-900- Greyish green polyzoal shelly marl

Plant working very well since installation of larger engine.

Notes by Driller in Charge (State in notes whether water, gas or petroleum has been met with, and, if so, give depth and nature of occurrence, also depth to which casing has been inserted and cemented. N.B. The Act also requires the Minister to be notified immediately water, gas, or petroleum is encountered.)

Bore cased with 6" casing to 827 feet.

Signed *J. W. H. Secretary*

Legal Manager *P. J. M. O'Brien* Govt.

Date *21.3.40*

* Strike out words not applicable.

Analyses of water, gas and oil should be submitted if available.

EXTRACT FROM THE MINES (PETROLEUM) ACT 1935,

AS AMENDED BY THE MINES (PETROLEUM) ACT 1939.

Section 19. (1) The holder of a licence shall employ in drilling operations only such methods of drilling as are capable of yielding a core or other samples as is or are prescribed or is or are approved by the Minister.

(2) In the event of water associated with a petroleum deposit being encountered in the course of drilling operations, the holder of the licence shall immediately report the same in writing to the Minister and state the steps taken to deal with it.

(3) In the event of the continuance of drilling operations after water has been encountered as aforesaid, the holder of the licence shall shut off all water so encountered and take such other steps as may be prescribed.

(4) In the event of traces of petroleum, including natural gas, appearing during drilling operations, the holder of the licence shall immediately report the same to the Minister, and shall carry out such operations to test the extent and value of the occurrence of such petroleum as the Minister by notice in writing directs.

(5) In the event of preliminary tests indicating the probability of payable petroleum, the holder of the licence shall -

- (a) immediately report thereon to the Minister in writing; and
- (b) carry out thereafter such operations as may be necessary to test the value of the occurrence of such petroleum as may be approved by the Minister.

Section 48. Every licensee and every lessee, unless in any case wholly or partially excused from so doing by the Minister, shall properly case each well with casing in accordance with the best approved methods, landing and effectually cementing one or more strings of the casing in clay or other water-impervious strata or formation between all water-bearing sands or strata and any underlying petroleum deposit, and generally shall take all such steps as are reasonably necessary for effectually shutting off all water overlying and underlying the petroleum deposits, and for effectually preventing any water from penetrating such petroleum deposits.

EXTRACT FROM THE MINES (PETROLEUM) ACT 1939.

Section 7 (6). Every licensee shall -

- (a) retain for a period of not less than twelve months all cores obtained by drilling and representative samples of other specimens obtained from the land and, when so required by the Minister, forward the same to the Minister.



MINES DEPARTMENT.
Victoria.

MINES (PETROLEUM) ACT 1935.
Section 45.

Record of work at ..Gippsland Oil Company NO 2. bore on

* Petroleum Prospecting Licence Number ..68.... during week
Petroleum Mineral Lease ending ..March 23rd..... 1940.....

Depth	Description of Strata
-------	-----------------------

900	900-910 - Bluish green foraminiferal marl.
-----	--

Plant closed down 20/3/40 untill after Easter

W. H. ...

Notes by Driller in Charge (State in notes whether water, gas or petroleum has been met with, and, if so, give depth and nature of occurrence, also depth to which casing has been inserted and cemented. N.B. The Act also requires the Minister to be notified immediately water, gas, or petroleum is encountered.)

Bore cased with 6" casing to 397 feet.

Gas showing with films of oil.

W. H. ...

Signed

Legal Manager Coy.
Date/...../.....

* Strike out words not applicable.

Analyses of water, gas and oil should be submitted if available.

EXTRACT FROM THE MINES (PETROLEUM) ACT 1935.

AS AMENDED BY THE MINES (PETROLEUM) ACT 1939.

Section 19. (1) The holder of a licence shall employ in drilling operations only such methods of drilling as are capable of yielding a core or other samples as is or are prescribed or is or are approved by the Minister.

(2) In the event of water associated with a petroleum deposit being encountered in the course of drilling operations, the holder of the licence shall immediately report the same in writing to the Minister and state the steps taken to deal with it.

(3) In the event of the continuance of drilling operations after water has been encountered as aforesaid, the holder of the licence shall shut off all water so encountered and take such other steps as may be prescribed.

(4) In the event of traces of petroleum, including natural gas, appearing during drilling operations, the holder of the licence shall immediately report the same to the Minister, and shall carry out such operations to test the extent and value of the occurrence of such petroleum as the Minister by notice in writing directs.

(5) In the event of preliminary tests indicating the probability of payable petroleum, the holder of the licence shall -

- (a) immediately report thereon to the Minister in writing; and
- (b) carry out thereafter such operations as may be necessary to test the value of the occurrence of such petroleum as may be approved by the Minister.

Section 48. Every licensee and every lessee, unless in any case wholly or partially excused from so doing by the Minister, shall properly case each well with casing in accordance with the best approved methods, landing and effectually cementing one or more strings of the casing in clay or other water-impervious strata or formation between all water-bearing sands or strata and any underlying petroleum deposit, and generally shall take all such steps as are reasonably necessary for effectually shutting off all water overlying and underlying the petroleum deposits, and for effectually preventing any water from penetrating such petroleum deposits.

EXTRACT FROM THE MINES (PETROLEUM) ACT 1939.

Section 7 (6). Every licensee shall -

- (a) retain for a period of not less than twelve months all cores obtained by drilling and representative samples of other specimens obtained from the land and, when so required by the Minister, forward the same to the Minister.

18/29



MINES DEPARTMENT.
Victoria.

M. I. N. E. S. (P. E. T. R. O. L. E. U. M) A. C. T. 1935.
Section 45.

Record of work at Gippsland Oil company NO. 2. bore on
* Petroleum Prospecting Licence Number 68 during week
Petroleum Mineral Lease ending March 30th 1940

Depth	Description of Strata
910 925	910-925 - Dark grey foraminiferal limy marl. Puggy

Plant resumed operations 27/3/40. After being closed down for Easter.

J. W. ...

Notes by Driller in Charge (State in notes whether water, gas or petroleum has been met with, and, if so, give depth and nature of occurrence, also depth to which casing has been inserted and cemented. N.B. The Act also requires the Minister to be notified immediately water, gas, or petroleum is encountered.)

Gas and oil films showing.

J. W. ...

Signed

Legal Manager Coy.
Date/...../.....

* Strike out words not applicable.

Analyses of water, gas and oil should be submitted if available.

EXTRACT FROM THE MINES (PETROLEUM) ACT 1935,

AS AMENDED BY THE MINES (PETROLEUM) ACT 1939.

Section 19. (1) The holder of a licence shall employ in drilling operations only such methods of drilling as are capable of yielding a core or other samples as is or are prescribed or is or are approved by the Minister.

(2) In the event of water associated with a petroleum deposit being encountered in the course of drilling operations, the holder of the licence shall immediately report the same in writing to the Minister and state the steps taken to deal with it.

(3) In the event of the continuance of drilling operations after water has been encountered as aforesaid, the holder of the licence shall shut off all water so encountered and take such other steps as may be prescribed.

(4) In the event of traces of petroleum, including natural gas, appearing during drilling operations, the holder of the licence shall immediately report the same to the Minister, and shall carry out such operations to test the extent and value of the occurrence of such petroleum as the Minister by notice in writing directs.

(5) In the event of preliminary tests indicating the probability of payable petroleum, the holder of the licence shall -

- (a) immediately report thereon to the Minister in writing; and
- (b) carry out thereafter such operations as may be necessary to test the value of the occurrence of such petroleum as may be approved by the Minister.

Section 48. Every licensee and every lessee, unless in any case wholly or partially excused from so doing by the Minister, shall properly case each well with casing in accordance with the best approved methods, landing and effectually cementing one or more strings of the casing in clay or other water-impervious strata or formation between all water-bearing sands or strata and any underlying petroleum deposit, and generally shall take all such steps as are reasonably necessary for effectually shutting off all water overlying and underlying the petroleum deposits, and for effectually preventing any water from penetrating such petroleum deposits.

EXTRACT FROM THE MINES (PETROLEUM) ACT 1939.

Section 7 (6). Every licensee shall -

- (a) retain for a period of not less than twelve months all cores obtained by drilling and representative samples of other specimens obtained from the land and, when so required by the Minister, forward the same to the Minister.



MINES DEPARTMENT.
Victoria.

M I N E S . . . (P E T R O L E U M) . . . A C T 1935.
Section 45.

Record of work at Gippsland Oil Co. No. 2 bore on
* Petroleum Prospecting Licence Number 68 during week
Petroleum Mineral Lease
ending April 6 1940

	Depth	Description of Strata
925	925-935	Grey foraminiferous marl
945	935-945	Greenish foraminiferous marl

Notes by Driller in Charge (State in notes whether water, gas or petroleum has been met with, and, if so, give depth and nature of occurrence, also depth to which casing has been inserted and cemented. N.B. The Act also requires the Minister to be notified immediately water, gas, or petroleum is encountered.)

Signed Director
Legal Manager Coy.
SECRET

* Strike out words not applicable.

Analyses of water, gas and oil should be submitted if available.

EXTRACT FROM THE MINES (PETROLEUM) ACT 1935,

AS AMENDED BY THE MINES (PETROLEUM) ACT 1939.

Section 19. (1) The holder of a licence shall employ in drilling operations only such methods of drilling as are capable of yielding a core or other samples as is or are prescribed or is or are approved by the Minister.

(2) In the event of water associated with a petroleum deposit being encountered in the course of drilling operations, the holder of the licence shall immediately report the same in writing to the Minister and state the steps taken to deal with it.

(3) In the event of the continuance of drilling operations after water has been encountered as aforesaid, the holder of the licence shall shut off all water so encountered and take such other steps as may be prescribed.

(4) In the event of traces of petroleum, including natural gas, appearing during drilling operations, the holder of the licence shall immediately report the same to the Minister, and shall carry out such operations to test the extent and value of the occurrence of such petroleum as the Minister by notice in writing directs.

(5) In the event of preliminary tests indicating the probability of payable petroleum, the holder of the licence shall -

- (a) immediately report thereon to the Minister in writing; and
- (b) carry out thereafter such operations as may be necessary to test the value of the occurrence of such petroleum as may be approved by the Minister.

Section 48. Every licensee and every lessee, unless in any case wholly or partially excused from so doing by the Minister, shall properly case each well with casing in accordance with the best approved methods, landing and effectually cementing one or more strings of the casing in clay or other water-impervious strata or formation between all water-bearing sands or strata and any underlying petroleum deposit, and generally shall take all such steps as are reasonably necessary for effectually shutting off all water overlying and underlying the petroleum deposits, and for effectually preventing any water from penetrating such petroleum deposits.

EXTRACT FROM THE MINES (PETROLEUM) ACT 1939.

Section 7 (6). Every licensee shall -

- (a) retain for a period of not less than twelve months all cores obtained by drilling and representative samples of other specimens obtained from the land and, when so required by the Minister, forward the same to the Minister.



MINES DEPARTMENT
Victoria.

MINES (PETROLEUM) ACT 1935.
Section 45.

Record of work at Gippsland Oil Co. No. 2 bore on
Petroleum Prospecting Licence Number 68 during week
* ~~Petroleum Mineral Lease~~ ending April 13th 1940

Depth Description of Strata

- 945 945-955 - Greenish grey foraminiferal marl. Very sticky.
- 960 955-960 - light grey polyzoal marl with bivalves.

Notes by Driller in Charge (State in notes whether water, gas or petroleum has been met with, and, if so, give depth and nature of occurrence, also depth to which casing has been inserted and cemented. N.B. The Act also requires the Minister to be notified immediately water, gas, or petroleum is encountered.)

6" casing run to 950 foot
[Signature]

GIPPSLAND OIL COMPANY LIMITED
Signed
Legal Manager Secretary Coy.

* Strike out words not applicable.
Analyses of water, gas and oil should be submitted if available.

EXTRACT FROM THE MINES (PETROLEUM) ACT 1935.

AS AMENDED BY THE MINES (PETROLEUM) ACT 1939.

Section 19. (1) The holder of a licence shall employ in drilling operations only such methods of drilling as are capable of yielding a core or other samples as is or are prescribed or is or are approved by the Minister.

(2) In the event of water associated with a petroleum deposit being encountered in the course of drilling operations, the holder of the licence shall immediately report the same in writing to the Minister and state the steps taken to deal with it.

(3) In the event of the continuance of drilling operations after water has been encountered as aforesaid, the holder of the licence shall shut off all water so encountered and take such other steps as may be prescribed.

(4) In the event of traces of petroleum, including natural gas, appearing during drilling operations, the holder of the licence shall immediately report the same to the Minister, and shall carry out such operations to test the extent and value of the occurrence of such petroleum as the Minister by notice in writing directs.

(5) In the event of preliminary tests indicating the probability of payable petroleum, the holder of the licence shall -

- (a) immediately report thereon to the Minister in writing; and
- (b) carry out thereafter such operations as may be necessary to test the value of the occurrence of such petroleum as may be approved by the Minister.

Section 48. Every licensee and every lessee, unless in any case wholly or partially excused from so doing by the Minister, shall properly case each well with casing in accordance with the best approved methods, landing and effectually cementing one or more strings of the casing in clay or other water-impervious strata or formation between all water-bearing sands or strata and any underlying petroleum deposit, and generally shall take all such steps as are reasonably necessary for effectually shutting off all water overlying and underlying the petroleum deposits, and for effectually preventing any water from penetrating such petroleum deposits.

EXTRACT FROM THE MINES (PETROLEUM) ACT 1939.

Section 7 (6). Every licensee shall -

- (a) retain for a period of not less than twelve months all cores obtained by drilling and representative samples of other specimens obtained from the land and, when so required by the Minister, forward the same to the Minister.



MINES DEPARTMENT.
Victoria.

MINES (PETROLEUM) ACT 1935.
Section 45.

Record of work at Lipheland Oil Co. No. 2 bore on

* Petroleum Prospecting Licence Number 68 during week
Petroleum Mineral Lease ending 20th April 1940

Depth	Description of Strata
960'-968'	Light grey polyzoal marl
968'-969'	Band of fairly hard shelly limestone
969'-971'	Light grey polyzoal marl
971'-979'	Light grey polyzoal marl with large corals
979'-983'	Light grey polyzoal marl
983'-984'	Fairly hard white limestone band

1. ~~Secretary~~ Notes by Driller in Charge (State in notes whether water, gas or petroleum has been met with, and, if so, give depth and nature of occurrence, also depth to which casing has been inserted and cemented. N.B. The Act also requires the Minister to be notified immediately water, gas, or petroleum is encountered.)

2. ~~Watch~~

3. ~~McCall~~ Films of oil appearing on gas bubbles in the slurry at this depth.
6" casing lowered to 963'-7 1/2"

Signed E. H. Macdonald,
Asst. Engineer
Legal-Manager Lipheland Oil Coy.
Date 20/4/40

J. White Secretary

* Strike out words not applicable.
Analyses of water, gas and oil should be submitted if available.

EXTRACT FROM THE MINES (PETROLEUM) ACT 1935,
AS AMENDED BY THE MINES (PETROLEUM) ACT 1939.

Section 19. (1) The holder of a licence shall employ in drilling operations only such methods of drilling as are capable of yielding a core or other samples as is or are prescribed or is or are approved by the Minister.

(2) In the event of water associated with a petroleum deposit being encountered in the course of drilling operations, the holder of the licence shall immediately report the same in writing to the Minister and state the steps taken to deal with it.

(3) In the event of the continuance of drilling operations after water has been encountered as aforesaid, the holder of the licence shall shut off all water so encountered and take such other steps as may be prescribed.

(4) In the event of traces of petroleum, including natural gas, appearing during drilling operations, the holder of the licence shall immediately report the same to the Minister, and shall carry out such operations to test the extent and value of the occurrence of such petroleum as the Minister by notice in writing directs.

(5) In the event of preliminary tests indicating the probability of payable petroleum, the holder of the licence shall -

(a) immediately report thereon to the Minister in writing; and

(b) carry out thereafter such operations as may be necessary to test the value of the occurrence of such petroleum as may be approved by the Minister.

Section 48. Every licensee and every lessee, unless in any case wholly or partially excused from so doing by the Minister, shall properly case each well with casing in accordance with the best approved methods, landing and effectually cementing one or more strings of the casing in clay or other water-impervious strata or formation between all water-bearing sands or strata and any underlying petroleum deposit, and generally shall take all such steps as are reasonably necessary for effectually shutting off all water overlying and underlying the petroleum deposits, and for effectually preventing any water from penetrating such petroleum deposits.

EXTRACT FROM THE MINES (PETROLEUM) ACT 1939.

Section 7 (6). Every licensee shall -

(a) retain for a period of not less than twelve months all cores obtained by drilling and representative samples of other specimens obtained from the land and, when so required by the Minister, forward the same to the Minister.



MINES DEPARTMENT.
Victoria.

MINES (PETROLEUM) ACT 1935.
Section 45.

Record of work at Gippsland Oil Co. No. 2 bore on
* Petroleum Prospecting Licence Number 108 during week
Petroleum Mineral Lease ending April 27 1940

Depth	Description of Strata
985' - 990'	Light grey polyzoal marl
990' - 993'	Sticky grey marl
993' - 994'	Band of hard white shelly limestone
994' - 1000'	Light grey polyzoal marl

E. H. Macdonald
Asst. Engineer

Notes by Driller in Charge (State in notes whether water, gas or petroleum has been met with, and, if so, give depth and nature of occurrence, also depth to which casing has been inserted and cemented. N.B. The Act also requires the Minister to be notified immediately water, gas, or petroleum is encountered.)

GIPPSLAND OIL COMPANY LIMITED

Signed *[Signature]* Director
Legal Manager *[Signature]* Coy. Secretary
Date

* Strike out words not applicable.
Analyses of water, gas and oil should be submitted if available.

EXTRACT FROM THE MINES (PETROLEUM) ACT 1935,

AS AMENDED BY THE MINES (PETROLEUM) ACT 1939.

Section 19. (1) The holder of a licence shall employ in drilling operations only such methods of drilling as are capable of yielding a core or other samples as is or are prescribed or is or are approved by the Minister.

(2) In the event of water associated with a petroleum deposit being encountered in the course of drilling operations, the holder of the licence shall immediately report the same in writing to the Minister and state the steps taken to deal with it.

(3) In the event of the continuance of drilling operations after water has been encountered as aforesaid, the holder of the licence shall shut off all water so encountered and take such other steps as may be prescribed.

(4) In the event of traces of petroleum, including natural gas, appearing during drilling operations, the holder of the licence shall immediately report the same to the Minister, and shall carry out such operations to test the extent and value of the occurrence of such petroleum as the Minister by notice in writing directs.

(5) In the event of preliminary tests indicating the probability of payable petroleum, the holder of the licence shall -

- (a) immediately report thereon to the Minister in writing; and
- (b) carry out thereafter such operations as may be necessary to test the value of the occurrence of such petroleum as may be approved by the Minister.

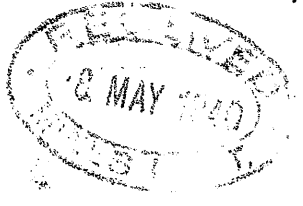
Section 48. Every licensee and every lessee, unless in any case wholly or partially excused from so doing by the Minister, shall properly case each well with casing in accordance with the best approved methods, landing and effectually cementing one or more strings of the casing in clay or other water-impervious strata or formation between all water-bearing sands or strata and any underlying petroleum deposit, and generally shall take all such steps as are reasonably necessary for effectually shutting off all water overlying and underlying the petroleum deposits, and for effectually preventing any water from penetrating such petroleum deposits.

EXTRACT FROM THE MINES (PETROLEUM) ACT 1939.

Section 7 (6). Every licensee shall -

- (a) retain for a period of not less than twelve months all cores obtained by drilling and representative samples of other specimens obtained from the land and, when so required by the Minister, forward the same to the Minister.

23/29



MINES DEPARTMENT.
Victoria.

MINES (PETROLEUM) ACT 1935.
Section 45.

Record of work at Gippsland Oil Co. No 2 bore on

Petroleum Prospecting Licence Number 68 during week
Petroleum Mineral Lease

ending 4th May 1940

Depth	Description of Strata
1000' - 1010'	Light grey sticky polygoal marl
1010' - 1021'	Dark grey polygoal marl with shells.

E. H. Macdonald
Asst. Engineer

Notes by Driller in Charge (State in notes whether water, gas or petroleum has been met with, and, if so, give depth and nature of occurrence, also depth to which casing has been inserted and cemented. N.B. The Act also requires the Minister to be notified immediately water, gas, or petroleum is encountered.)

*7 clms of oil still persisting in the
Slurry.*

GIPPSLAND OIL COMPANY LIMITED
Signed
Legal Manager *[Signature]* Coy.
Date 7/5/40

* Strike out words not applicable.

Analyses of water, gas and oil should be submitted if available.

-0-0-0-0-0-0-

[Handwritten mark]

EXTRACT FROM THE MINES (PETROLEUM) ACT 1935,
AS AMENDED BY THE MINES (PETROLEUM) ACT 1939.

Section 19. (1) The holder of a licence shall employ in drilling operations only such methods of drilling as are capable of yielding a core or other samples as is or are prescribed or is or are approved by the Minister.

(2) In the event of water associated with a petroleum deposit being encountered in the course of drilling operations, the holder of the licence shall immediately report the same in writing to the Minister and state the steps taken to deal with it.

(3) In the event of the continuance of drilling operations after water has been encountered as aforesaid, the holder of the licence shall shut off all water so encountered and take such other steps as may be prescribed.

(4) In the event of traces of petroleum, including natural gas, appearing during drilling operations, the holder of the licence shall immediately report the same to the Minister, and shall carry out such operations to test the extent and value of the occurrence of such petroleum as the Minister by notice in writing directs.

(5) In the event of preliminary tests indicating the probability of payable petroleum, the holder of the licence shall -

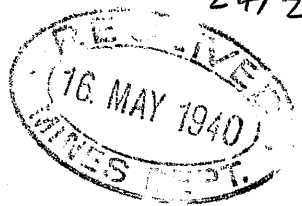
- (a) immediately report thereon to the Minister in writing; and
- (b) carry out thereafter such operations as may be necessary to test the value of the occurrence of such petroleum as may be approved by the Minister.

Section 48. Every licensee and every lessee, unless in any case wholly or partially excused from so doing by the Minister, shall properly case each well with casing in accordance with the best approved methods, landing and effectually cementing one or more strings of the casing in clay or other water-impervious strata or formation between all water-bearing sands or strata and any underlying petroleum deposit, and generally shall take all such steps as are reasonably necessary for effectually shutting off all water overlying and underlying the petroleum deposits, and for effectually preventing any water from penetrating such petroleum deposits.

EXTRACT FROM THE MINES (PETROLEUM) ACT 1939.

Section 7 (6). Every licensee shall -

- (a) retain for a period of not less than twelve months all cores obtained by drilling and representative samples of other specimens obtained from the land and, when so required by the Minister, forward the same to the Minister.



MINES DEPARTMENT.
Victoria.

M I N E S (P E T R O L E U M) A C T 1935.
Section 45.

Record of work at Spencer Island Oil Co. No. 2 bore on

* Petroleum Prospecting Licence Number 68 during week
Petroleum Mineral Lease ending 11th May 1940

Depth Description of Strata

Depth	Description of Strata
1020' - 1024'	Dark grey polyzoal marl.
1024' - 1027'	Greenish grey polyzoal marl.
Core taken 1027' - 1030'	Greenish grey polyzoal marl.
1030' - 1042'	Greenish grey polyzoal marl with shells

E. H. Macdonald
Asst. Engineer

Notes by Driller in Charge (State in notes whether water, gas or petroleum has been met with, and, if so, give depth and nature of occurrence, also depth to which casing has been inserted and cemented. N.B. The Act also requires the Minister to be notified immediately water, gas, or petroleum is encountered.)

On cutting a sample of the core taken with chloroform an appreciable residue of oil remained

Signed SPENCER ISLAND OIL COMPANY LIMITED
Director
Legal Manager
Date *17.5.40*

* Strike out words not applicable.

Analyses of water, gas and oil should be submitted if available.

EXTRACT FROM THE MINES (PETROLEUM) ACT 1935.

AS AMENDED BY THE MINES (PETROLEUM) ACT 1939.

Section 19. (1) The holder of a licence shall employ in drilling operations only such methods of drilling as are capable of yielding a core or other samples as is or are prescribed or is or are approved by the Minister.

(2) In the event of water associated with a petroleum deposit being encountered in the course of drilling operations, the holder of the licence shall immediately report the same in writing to the Minister and state the steps taken to deal with it.

(3) In the event of the continuance of drilling operations after water has been encountered as aforesaid, the holder of the licence shall shut off all water so encountered and take such other steps as may be prescribed.

(4) In the event of traces of petroleum, including natural gas, appearing during drilling operations, the holder of the licence shall immediately report the same to the Minister, and shall carry out such operations to test the extent and value of the occurrence of such petroleum as the Minister by notice in writing directs.

(5) In the event of preliminary tests indicating the probability of payable petroleum, the holder of the licence shall -

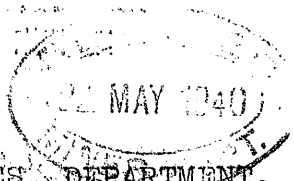
- (a) immediately report thereon to the Minister in writing; and
- (b) carry out thereafter such operations as may be necessary to test the value of the occurrence of such petroleum as may be approved by the Minister.

Section 48. Every licensee and every lessee, unless in any case wholly or partially excused from so doing by the Minister, shall properly case each well with casing in accordance with the best approved methods, landing and effectually cementing one or more strings of the casing in clay or other water-impervious strata or formation between all water-bearing sands or strata and any underlying petroleum deposit, and generally shall take all such steps as are reasonably necessary for effectually shutting off all water overlying and underlying the petroleum deposits, and for effectually preventing any water from penetrating such petroleum deposits.

EXTRACT FROM THE MINES (PETROLEUM) ACT 1939.

Section 7 (6). Every licensee shall -

- (a) retain for a period of not less than twelve months all cores obtained by drilling and representative samples of other specimens obtained from the land and, when so required by the Minister, forward the same to the Minister.



MINES DEPARTMENT.
Victoria.

M I N E S (P E T R O L E U M) A C T 1935.
Section 45.

Record of work at *Gippsland Oil Co. No 2* bore on

* Petroleum Prospecting Licence Number *68* during week
Petroleum Mineral Lease ending *18th May 1942*

Depth Description of Strata

1042' - 1065'

*Light greenish grey polyzoal
marl*

Notes by Driller in Charge (State in notes whether water, gas or petroleum has been met with, and, if so, give depth and nature of occurrence, also depth to which casing has been inserted and cemented. N.B. The Act also requires the Minister to be notified immediately water, gas, or petroleum is encountered.)

6" casing lowered to 1039' - 10 1/2"

E. M. Macdonald
Asst. Engineer

Signed **GIPPSLAND OIL COMPANY LIMITED**
Legal Manager Coy.
Date *17/5/42* Director
W. H. Courtney Secretary

* Strike out words not applicable.

Analyses of water, gas and oil should be submitted if available.

EXTRACT FROM THE MINES (PETROLEUM) ACT 1935,
AS AMENDED BY THE MINES (PETROLEUM) ACT 1939.

Section 19. (1) The holder of a licence shall employ in drilling operations only such methods of drilling as are capable of yielding a core or other samples, as is or are prescribed or is or are approved by the Minister.

(2) In the event of water associated with a petroleum deposit being encountered in the course of drilling operations, the holder of the licence shall immediately report the same in writing to the Minister and state the steps taken to deal with it.

(3) In the event of the continuance of drilling operations after water has been encountered as aforesaid, the holder of the licence shall shut off all water so encountered and take such other steps as may be prescribed.

(4) In the event of traces of petroleum, including natural gas, appearing during drilling operations, the holder of the licence shall immediately report the same to the Minister, and shall carry out such operations to test the extent and value of the occurrence of such petroleum as the Minister by notice in writing directs.

(5) In the event of preliminary tests indicating the probability of payable petroleum, the holder of the licence shall -

(a) immediately report thereon to the Minister in writing; and

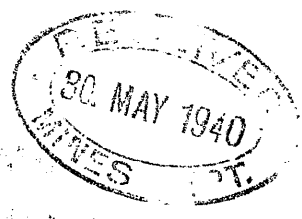
(b) carry out thereafter such operations as may be necessary to test the value of the occurrence of such petroleum as may be approved by the Minister.

Section 48. Every licensee and every lessee, unless in any case wholly or partially excused from so doing by the Minister, shall properly case each well with casing in accordance with the best approved methods, landing and effectually cementing one or more strings of the casing in clay or other water-impervious strata or formation between all water-bearing sands or strata and any underlying petroleum deposit, and generally shall take all such steps as are reasonably necessary for effectually shutting off all water overlying and underlying the petroleum deposits, and for effectually preventing any water from penetrating such petroleum deposits.

EXTRACT FROM THE MINES (PETROLEUM) ACT 1939.

Section 7 (6). Every licensee shall -

(a) retain for a period of not less than twelve months all cores obtained by drilling and representative samples of other specimens obtained from the land and, when so required by the Minister, forward the same to the Minister.



MINES DEPARTMENT.
Victoria.

M I N E S (P E T R O L E U M) A C T 1935.
Section 45.

Record of work at Gippsland Oil Co No 2 bore on

* Petroleum Prospecting Licence Number 68 during week
Petroleum Mineral Lease ending May 25th 1940

Depth	Description of Strata
1065-1067'	Core taken. Light grey polyzoal marl with shells
1067-1077'	Light grey polyzoal marl with shells

E. H. Macdonald
Asst. Engineer

Notes by Driller in Charge (State in notes whether water, gas or petroleum has been met with, and, if so, give depth and nature of occurrence, also depth to which casing has been inserted and cemented. N.B. The Act also requires the Minister to be notified immediately water, gas, or petroleum is encountered.)

A sample of core taken yielded 0.00003 parts by weight of oil.

GIPPSLAND OIL COMPANY LIMITED

Signed *J. J. White* Director

Legal Manager Secretary

Date

* Strike out words not applicable.

Analyses of water, gas and oil should be submitted if available.

EXTRACT FROM THE MINES (PETROLEUM) ACT 1935,

AS AMENDED BY THE MINES (PETROLEUM) ACT 1939.

Section 19. (1) The holder of a licence shall employ in drilling operations only such methods of drilling as are capable of yielding a core or other samples as is or are prescribed or is or are approved by the Minister.

(2) In the event of water associated with a petroleum deposit being encountered in the course of drilling operations, the holder of the licence shall immediately report the same in writing to the Minister and state the steps taken to deal with it.

(3) In the event of the continuance of drilling operations after water has been encountered as aforesaid, the holder of the licence shall shut off all water so encountered and take such other steps as may be prescribed.

(4) In the event of traces of petroleum, including natural gas, appearing during drilling operations, the holder of the licence shall immediately report the same to the Minister, and shall carry out such operations to test the extent and value of the occurrence of such petroleum as the Minister by notice in writing directs.

(5) In the event of preliminary tests indicating the probability of payable petroleum, the holder of the licence shall -

- (a) immediately report thereon to the Minister in writing; and
- (b) carry out thereafter such operations as may be necessary to test the value of the occurrence of such petroleum as may be approved by the Minister.

Section 48. Every licensee and every lessee, unless in any case wholly or partially excused from so doing by the Minister, shall properly case each well with casing in accordance with the best approved methods, landing and effectually cementing one or more strings of the casing in clay or other water-impervious strata or formation between all water-bearing sands or strata and any underlying petroleum deposit, and generally shall take all such steps as are reasonably necessary for effectually shutting off all water overlying and underlying the petroleum deposits, and for effectually preventing any water from penetrating such petroleum deposits.

EXTRACT FROM THE MINES (PETROLEUM) ACT 1939.

Section 7 (6). Every licensee shall -

- (a) retain for a period of not less than twelve months all cores obtained by drilling and representative samples of other specimens obtained from the land and, when so required by the Minister, forward the same to the Minister.

- 1. ~~Secretary~~
- 2. ~~In Wraith~~
- 3. In Crall.



MINES DEPARTMENT.
Victoria.

M I N E S (P E T R O L E U M) A C T 1935.
Section 45.

Record of work at Sydney Island Oil Co. No. 2 bore on

* Petroleum Prospecting Licence Number 68 during week
 Petroleum Mineral Lease ending June 1st 1940

Depth Description of Strata

1077'-1089'-6"

Light greenish grey polyzoal
 marl with shells.

E. H. Macdonald
 Asst. Engineer

Notes by Driller in Charge (State in notes whether water, gas or petroleum has been met with, and, if so, give depth and nature of occurrence, also depth to which casing has been inserted and cemented. N.B. The Act also requires the Minister to be notified immediately water, gas, or petroleum is encountered.)

6" casing lowered to 1060'-1 1/2"

Signed *Joe White*

Legal Manager Coy.
 Date

* Strike out words not applicable.

Analyses of water, gas and oil should be submitted if available.

EXTRACT FROM THE MINES (PETROLEUM) ACT 1935,

AS AMENDED BY THE MINES (PETROLEUM) ACT 1939.

Section 19. (1) The holder of a licence shall employ in drilling operations only such methods of drilling as are capable of yielding a core or other samples as is or are prescribed or is or are approved by the Minister.

(2) In the event of water associated with a petroleum deposit being encountered in the course of drilling operations, the holder of the licence shall immediately report the same in writing to the Minister and state the steps taken to deal with it.

(3) In the event of the continuance of drilling operations after water has been encountered as aforesaid, the holder of the licence shall shut off all water so encountered and take such other steps as may be prescribed.

(4) In the event of traces of petroleum, including natural gas, appearing during drilling operations, the holder of the licence shall immediately report the same to the Minister, and shall carry out such operations to test the extent and value of the occurrence of such petroleum as the Minister by notice in writing directs.

(5) In the event of preliminary tests indicating the probability of payable petroleum, the holder of the licence shall -

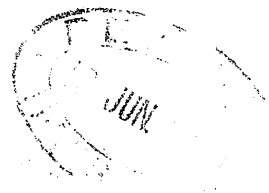
- (a) immediately report thereon to the Minister in writing; and
- (b) carry out thereafter such operations as may be necessary to test the value of the occurrence of such petroleum as may be approved by the Minister.

Section 48. Every licensee and every lessee, unless in any case wholly or partially excused from so doing by the Minister, shall properly case each well with casing in accordance with the best approved methods, landing and effectually cementing one or more strings of the casing in clay or other water-impervious strata or formation between all water-bearing sands or strata and any underlying petroleum deposit, and generally shall take all such steps as are reasonably necessary for effectually shutting off all water overlying and underlying the petroleum deposits, and for effectually preventing any water from penetrating such petroleum deposits.

EXTRACT FROM THE MINES (PETROLEUM) ACT 1939.

Section 7 (6). Every licensee shall -

- (a) retain for a period of not less than twelve months all cores obtained by drilling and representative samples of other specimens obtained from the land and, when so required by the Minister, forward the same to the Minister.



MINES DEPARTMENT.
Victoria.

M I N E S (P E T R O L E U M) A C T 1935.
Section 45.

Record of work at Gippsland Oil Co No 2 bore on

* Petroleum Prospecting Licence Number 108 during week
Petroleum Mineral Lease ending 8th June 1940

Depth	Description of Strata
1089'-6" - 1091'	core taken. Dark greenish grey polyzoal marl with bi-valves & streaks of glauconite.
1091' - 1098'	Dark greenish grey polyzoal marl

~~1. No. 1~~
 2. No. 2
 3. No. 3
 B. M.

E. H. Macdonald
Asst. Engineer

Notes by Driller in Charge (State in notes whether water, gas or petroleum has been met with, and, if so, give depth and nature of occurrence, also depth to which casing has been inserted and cemented. N.B. The Act also requires the Minister to be notified immediately water, gas, or petroleum is encountered.)

Casing lowered to 1087'-6"

GIPPSLAND OIL COMPANY LIMITED

Signed [Signature]
Legal Manager Coy.
Date 11/6/40

* Strike out words not applicable.

Analyses of water, gas and oil should be submitted if available.

EXTRACT FROM THE MINES (PETROLEUM) ACT 1935,

AS AMENDED BY THE MINES (PETROLEUM) ACT 1939.

Section 19. (1) The holder of a licence shall employ in drilling operations only such methods of drilling as are capable of yielding a core or other samples as is or are prescribed or is or are approved by the Minister.

(2) In the event of water associated with a petroleum deposit being encountered in the course of drilling operations, the holder of the licence shall immediately report the same in writing to the Minister and state the steps taken to deal with it.

(3) In the event of the continuance of drilling operations after water has been encountered as aforesaid, the holder of the licence shall shut off all water so encountered and take such other steps as may be prescribed.

(4) In the event of traces of petroleum, including natural gas, appearing during drilling operations, the holder of the licence shall immediately report the same to the Minister, and shall carry out such operations to test the extent and value of the occurrence of such petroleum as the Minister by notice in writing directs.

(5) In the event of preliminary tests indicating the probability of payable petroleum, the holder of the licence shall -

- (a) immediately report thereon to the Minister in writing; and
- (b) carry out thereafter such operations as may be necessary to test the value of the occurrence of such petroleum as may be approved by the Minister.

Section 48. Every licensee and every lessee, unless in any case wholly or partially excused from so doing by the Minister, shall properly case each well with casing in accordance with the best approved methods, landing and effectually cementing one or more strings of the casing in clay or other water-impervious strata or formation between all water-bearing sands or strata and any underlying petroleum deposit, and generally shall take all such steps as are reasonably necessary for effectually shutting off all water overlying and underlying the petroleum deposits, and for effectually preventing any water from penetrating such petroleum deposits.

EXTRACT FROM THE MINES (PETROLEUM) ACT 1939.

Section 7 (6). Every licensee shall -

- (a) retain for a period of not less than twelve months all cores obtained by drilling and representative samples of other specimens obtained from the land and, when so required by the Minister, forward the same to the Minister.



MINES DEPARTMENT.
Victoria.

MINES (PETROLEUM) ACT 1935.
Section 45.

Record of work at ... GIPPSLAND OIL COMPANY'S NO. 2 ... bore on

* Petroleum Prospecting Licence Number during week
Petroleum Mineral Lease ending 1948....

Depth 1106 feet Description of Strata

1098 - 1106 feet - Dark grey laminated polyzoal marl.

As this plant has reached its limit in depth, drilling on No. 2 will be held up until a larger plant can be erected.

Arrangements are now being negotiated with the Contractors by which a G20 plant built to drill 2500 feet will be brought onto the field as soon as it can be moved from its present location.

The pilot plant which was only intended to do part of the drilling on No. 2 was a G14 and built to drill 750 feet. Good work by the Contractors was done to carry on with it to the 1106 foot level. Any further drilling with this plant would be too great a hazard for the safety of the bore and of the plant.

W. H. ...

Notes by Driller in Charge (State in notes whether water, gas or petroleum has been met with, and, if so, give depth and nature of occurrence, also depth to which casing has been inserted and cemented. N.B. The Act also requires the Minister to be notified immediately water, gas, or petroleum is encountered.)

GIPPSLAND OIL COMPANY LIMITED

Signed Director
..... Secretary
Legal Manager Coy.
Date 05/6/48

* Strike out words not applicable.

Analyses of water, gas and oil should be submitted if available.

EXTRACT FROM THE MINES (PETROLEUM) ACT 1935,

AS AMENDED BY THE MINES (PETROLEUM) ACT 1939.

Section 19. (1) The holder of a licence shall employ in drilling operations only such methods of drilling as are capable of yielding a core or other samples as is or are prescribed or is or are approved by the Minister.

(2) In the event of water associated with a petroleum deposit being encountered in the course of drilling operations, the holder of the licence shall immediately report the same in writing to the Minister and state the steps taken to deal with it.

(3) In the event of the continuance of drilling operations after water has been encountered as aforesaid, the holder of the licence shall shut off all water so encountered and take such other steps as may be prescribed.

(4) In the event of traces of petroleum, including natural gas, appearing during drilling operations, the holder of the licence shall immediately report the same to the Minister, and shall carry out such operations to test the extent and value of the occurrence of such petroleum as the Minister by notice in writing directs.

(5) In the event of preliminary tests indicating the probability of payable petroleum, the holder of the licence shall -

- (a) immediately report thereon to the Minister in writing; and
- (b) carry out thereafter such operations as may be necessary to test the value of the occurrence of such petroleum as may be approved by the Minister.

Section 48. Every licensee and every lessee, unless in any case wholly or partially excused from so doing by the Minister, shall properly case each well with casing in accordance with the best approved methods, landing and effectually cementing one or more strings of the casing in clay or other water-impervious strata or formation between all water-bearing sands or strata and any underlying petroleum deposit, and generally shall take all such steps as are reasonably necessary for effectually shutting off all water overlying and underlying the petroleum deposits, and for effectually preventing any water from penetrating such petroleum deposits.

EXTRACT FROM THE MINES (PETROLEUM) ACT 1939.

Section 7 (6). Every licensee shall -

- (a) retain for a period of not less than twelve months all cores obtained by drilling and representative samples of other specimens obtained from the land and, when so required by the Minister, forward the same to the Minister.

GIPPSLAND NO. 2. - GIPPSLAND OIL CO. LTD.

Oil and Gas reported in Weekly Drilling
Reports submitted by the Company to the
Department.

Date of Report.	Depth	Notes.
10th February, 1940.	715' - 760'	Gas showing in bore.
17th February, 1940.	760' - 800'	Gas showing and irridescent films on trench.
23rd March, 1940.	900' - 910'	Gas showing with films of oil.
30th March 1940.	910' - 925'	Gas and oil films showing.
20th April, 1940.	960' - 984'	Films of oil appearing on gas bubble in the slurry. at this depth.
4th May, 1940.	1000' - 1021'	Films of oil still persisting in the slurry.
11th May, 1940.		On cutting a sample of the core (1027'-1030' Ed.) taken with chloroform an appreciable residue of oil remained.
25th May, 1940.		A sample of the core (1065'-1067' Ed.) taken yielded 0.00003 parts by weight of oil.

Last Report dated 15th June, 1940.
Plant reached its limit plan to get
new plant. Depth 1106'.

.....

4.0 LITHOLOGY 1 OF 2

- COMPANY LOG

W430

GIFFSLAND OIL COMPANY LIMITED

LOG

OF

NO. 2 BORE

Checked against Weekly Drilling Reports
submitted by the company to the Department
& additions & corrections marked in
ink on Bore to 920'.

P. White
24/ Aug / 1965.

25/ Aug / 1965. W.D.R. typed
out reports.

NO. 2 BORE

1939.

Commenced 30th November 1935.

0 - 70	feet	Yellow and grey mottled sandy clay. <u>70-80</u> Soft grey sandstone
70 - 84	"	Soft grey sandstone
84 - 208	"	Sandy yellow clay
208	'	First appearance of shells. Also 2 gals. water per hour
208 - 216	"	Yellow sandy clay with abundant shells
216 - 262	"	Grey marl rich in shells
262	'	Shell band
262 - 310	"	Grey shelly marl
310 - 355	"	Brown shelly marl with sand
355 - 372	"	Brown micaceous shelly marl
372 - 490	"	White friable polyzoal limestone
490 - 500	"	Cream colored polyzoal limy marl
500 - 590	"	Greenish grey shelly polyzoal marl
590 - 625	"	Grey polyzoal shelly marl puggy
625 - 675	"	Greyish green shelly marl with granular limestone
675 - 715	"	Grey sandy shelly marl
715 - 750	"	Granular limestone, greyish green with shells
750 - 760	"	White granular limestone with shells. Gas showing in Bore.
760 - 785	"	Polyzoal lime with shells. Slightly cemented
785 - 800	"	Bluish ^{green} polyzoal marl, very sticky
800 - 858	"	In light to dark greenish grey polyzoal marl with shells and grains of quartz
858 - 860	"	Bluish grey foraminiferal marl. Foraminifera starting to appear in quantity in Bore.
860 - 862'6"	863'	Hard white crystalline limestone with large coral shafts.
862'6" - 869'6"		Light greenish grey polyzoal marl
869'6" - 873 feet		Soft to hard white crystalline limestone
873' - 874'6"		Core taken. Grey polyzoal marl with shells
875 - 890	"	Grey polyzoal shelly marl, puggy
890 - 900	"	Greyish green polyzoal shelly lime-marl
900 - 910	"	Bluish green foraminiferal marl. Gas and Oil films showing.
910 - 925	"	Dark grey foraminiferal marl, puggy.
920 - 925	"	Dark grey foraminiferal marl with shells - This entry not in W.D.R. form.
925 - 926	"	Bluish grey foraminiferal marl merging into a soft white limestone.
926 - 936	"	Dark grey foraminiferal marl
936 - 945	"	Light grey foraminiferal marl
945 - 955	"	Greenish grey sticky foraminiferal marl
955 - 960	"	Light grey polyzoal marl with bi-valves
960 - 968	"	Light grey polyzoal marl
968 - 969	"	Band of fairly hard shelly limestone
969 - 971	"	Light grey polyzoal marl
971 - 979	"	Light grey polyzoal marl with large corals
979 - 983	"	Light grey polyzoal marl
983 - 984	"	Band of soft to hard white limestone
985 - 990	"	Light grey polyzoal marl
990 - 993	"	Sticky grey marl
993 - 994	"	Band of hard white shelly limestone
994 - 1000	"	Light grey polyzoal marl

With abundant

500-550 Polyzoal limey marl and shells
 some fragmental limestone
 550-575 Grey-green shelly marl - large shells present crumble on touching.

300' - Greyish blue foraminiferal
 limy marl, very puggy.
 827'-858'
 Polyzoal
 marl with
 fragmental
 limestone
 and shells

each Rph.
 863'-875' Greenish grey
 polyzoal limey marl
 with shells

(over)

1000 - 1010 feet	Light grey sticky polyscal marl
1010 - 1021 "	Dark grey polyscal marl with shells
1020 - 1024 "	Dark grey polyscal marl
1024 - 1027 "	Greenish grey polyscal marl
1027 - 1030 "	Core taken. Greenish grey polyscal marl
1030 - 1042 "	Greenish grey polyscal marl with shells
1042 - 1055 "	Light greenish grey polyscal marl
1055 - 1067 "	A core was taken - Light grey polyscal marl with shells
1067 - 1077 "	Light grey polyscal marl with shells
1077 - 1089'6"	Light greenish grey polyscal marl with shells
1089'6" - 1091'	Core taken. Dark greenish grey polyscal marl with bi-valves and streaks of glauconite
1091 - 1098 feet	Dark greenish grey polyscal marl
1098 - 1108 "	Dark grey laminated polyscal marl

to 18th June, 1941.

Rec'd

11/27/41

[Handwritten signature]

8" casing to 27' 11"

4.0 LITHOLOGY 2 OF 2

- LOG FROM WEEKLY REPORTS
- HYDROCARBONS SUMMARY

GIPPSLAND OIL CO. LTD. - GIPPSLAND NO. 2.

Lithological Log copied from Weekly Drilling
Reports submitted by the company to the
Department.

0'	-	70'	Yellow and grey <i>mottled sandy clay</i> .
70'	-	80'	Soft grey sandstone
80'	-	84'	Soft grey sandstone
84'	-	208'	Sandy yellow clay
	at	208'	First appearance of shells
208'	-	216'	Yellow sandy clay with abundant shells
216'	-	262'	Grey marl rich in shells
	at	262'	Shell band
262'	-	310'	Grey shelly marl
310'	-	355'	Brown shelly marl with sand
355'	-	372'	Brown micaceous shelly marl
372'	-	490'	White friable polyzoal limestone
490'	-	500'	Cream coloured polyzoal limey marl
500'	-	550'	Polyzoal limey marl with abundant shells and some fragmental limestone
550'	-	575'	Greyish green shelly marl. Large shells are in a state of deterioration and cannot be taken from core without crumbling
575'	-	590'	Greenish grey shelly polyzoal marl
590'	-	625'	Grey polyzoal shelly marl, puggy
625'	-	675'	Greenish grey shelly marl with granular limestone
675'	-	715'	Grey sandy shelly marl
715'	-	750'	Granular limestone, greyish green with shells
750'	-	760'	White granular limestone and shell
760'	-	785'	Polyzoal lime with shells. Slightly cemented
785'	-	800'	Blueish green polyzoal marl, sticky
800'	-		Greyish blue foraminiferal limey marl. Very puggy
827'	-	858'	Polyzoal marl with fragmental limestone and shells
858'	-	860'	Blueish grey foraminiferal marl
860'	-	863'	Hard white limestone with coral
863'	-	875'	Greenish grey polyzoal limey with shells
875'	-	890'	Grey polyzoal shelly marl, puggy
890'	-	900'	Greyish green polyzoal shelly marl
900'	-	910'	Bluish green foraminiferal marl
910'	-	925'	Dark grey foraminiferal limey marl, puggy
925'	-	935'	Grey foraminiferal marl.

935'	-	945'	Greenish foraminiferal marl
945'	-	955'	Greenish grey foraminiferal marl, very sticky
955'	-	960'	Light grey polyzoal marl with bivalves
960'	-	968'	Light grey polyzoal marl
968'	-	969'	Band of fairly hard shelly limestone
969'	-	971'	Light grey polyzoal marl
971'	-	979'	Light grey polyzoal marl with large corals
979'	-	983'	Light grey polyzoal marl
983'	-	984'	Fairly hard white limestone band
984'	-	985'	
985'	-	990'	Light grey polyzoal marl
990'	-	993'	Sticky grey marl
993'	-	994'	Band of hard white shelly limestone
994'	-	1000'	Light grey polyzoal marl
1000'	-	1010'	Light grey sticky polyzoal marl
1010'	-	1021'	Dark grey polyzoal marl with shells
1020'	-	1024'	Dark grey polyzoal marl
1024'	-	1030'	Greenish grey polyzoal marl
1030'	-	1042'	Greenish grey polyzoal marl with shells
1042'	-	1065'	Light greenish grey polyzoal marl
1065'	-	1077'	Light grey polyzoal marl with shells
1077'	-	1089'6"	Light greenish grey polyzoal marl with shells
1089'6"	-	1091'	Dark greenish grey polyzoal marl with bi-valves and streaks of glauconite
1091'	-	1098'	Dark greenish grey polyzoal marl
1098'	-	1106'	Dark grey laminated polyzoal marl

At this depth it was planned to change plants from a G14 to G20.

Last reported depth to 1106'

WATER

at	208'	A seepage of water encountered. Two gallons per hour.
at	220'	Water came in freely

OIL AND GAS

During	500'	-	575'	Gas started to make its appearance
"	715'	-	760'	Gas showing in bore
"	760'	-	800'	Gas showing and irridescent film on trench
"	900'	-	910'	Gas showing with films of oil
"	910'	-	925'	Gas and oil films showing
"	960'	-	984'	Films of oil appearing on gas bubbles in slurry at this depth.

During 1000' - 1021'	Films of oil still persisting in the slurry
" 1020' - 1042'	On cutting a sample of the core taken (1027'-1030' Ed.) with chloroform an appreciable residue of oil remained
" 1065' - 1077'	A sample of core taken yielded 0.00003 parts by weight of oil (1065'-1067').

NOTES:

This bore is very similar to NO.1 (Gippsland No.1 Ed.) except that it shows a rise of approximately 130 feet.

GIPPSLAND NO. 2. - GIPPSLAND OIL CO. LTD.

Oil and Gas reported in Weekly Drilling
Reports submitted by the Company to the
Department.

Date of Report.	Depth	Notes.
10th February, 1940.	715' - 760'	Gas showing in bore.
17th February, 1940.	760' - 800'	Gas showing and irridescent films on trench.
23rd March, 1940.	900' - 910'	Gas showing with films of oil.
30th March 1940.	910' - 925'	Gas and oil films showing.
20th April, 1940.	960' - 984'	Films of oil appearing on gas bubble in the slurry at this depth.
4th May, 1940.	1000' - 1021'	Films of oil still persisting in the slurry.
11th May, 1940.		On cutting a sample of the core (1027'-1030'Ed.) taken with chloroform an appreciable residue of oil remained.
25th May, 1940.		A sample of the core (1065'-1067' Ed.) taken yielded 0.00003 parts by weight of oil.

Last Report dated 15th June, 1940.
Plant reached its limit plan to get
new plant. Depth 1106'.

.....