

Widco WELL LOG

COMPANY: Arco/Woodside
 AREA: East Gippsland Basin
 WELL: East Lake Tyers No. 1
 COUNTY: Tambo STATE: Victoria

COORDINATES: 38° 50' 38" S
 148° 07' 33" E
 ELEVATION:
 D.F.
 K.B.
 G.I. Approx. 10 ft

WELL: East Lake Tyers No. 1
 LOCATION: Lake Tyers, Vic.

Date	Oct 17th, 1962	Run No. 1	Run No. 2	MUD	Run No. 1	Run No. 2
First Reading	1536'			Nature	Bentonite, myrtan, caustic	
Lost Reading	296'			Density	10 lb/US gall	& water
Footage Logged	1240'			Viscosity	6.2 @ 52 F	
Bottom (Driller)	1541'			Resistivity	3.4 @ 99 F	
Casing (From Log)	296'			Res. @ BHT		
Casing (Driller)	300'			pH		
Casing Size	7" O.D.			Circ. Temp.	900F	
Bit Size	5 7/8"	300' - 1541'		B.H. Temp.	990F	

Logged by: W.A. Esplan & K.G. Bowen
 Witnessed by: P. Ingram

REMARKS: Datum for depth is rotary table, approximately 5 feet above natural surface.
 Logged on the run up. 40 inch Normal traced from separate run.

(Widco Logger No. 306, Boot Assembly No. 0715, Electrical Sonde No. 0713)

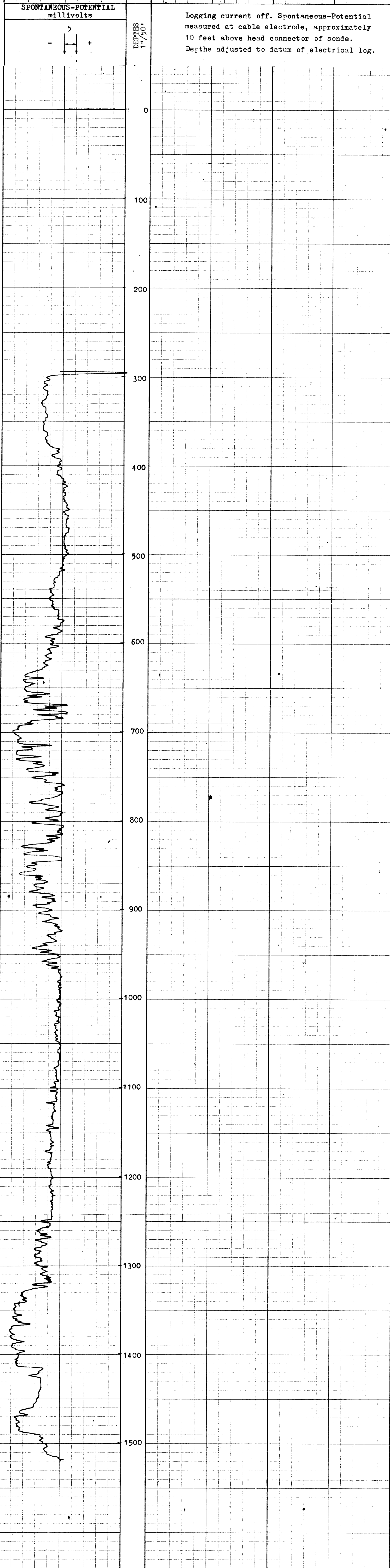
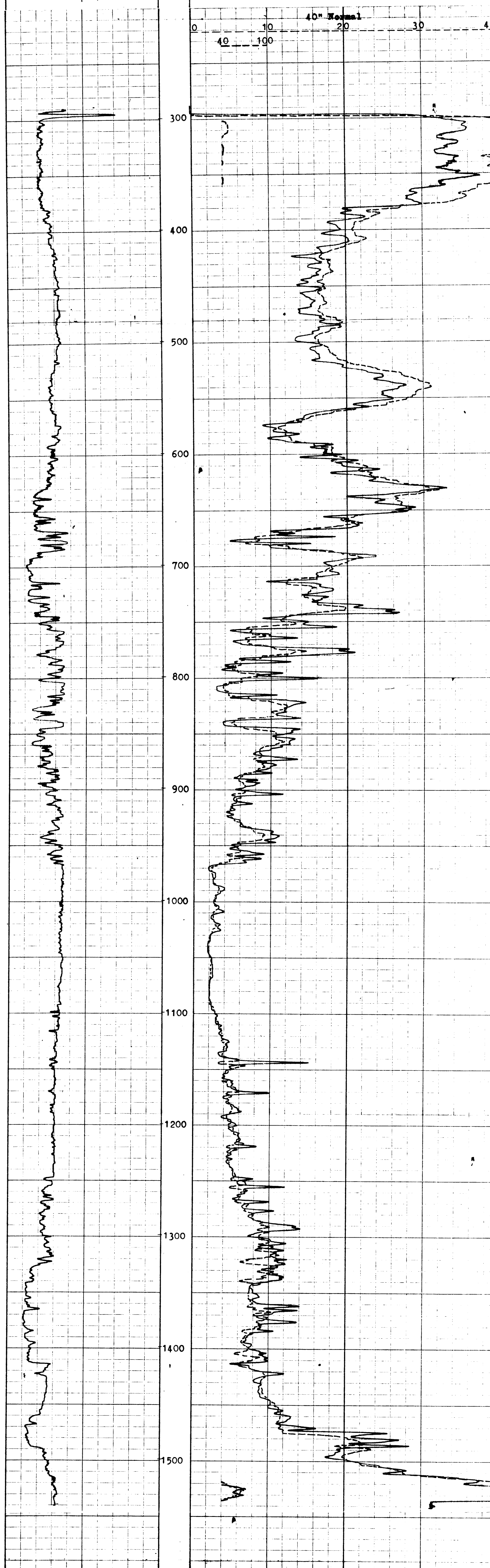


PLATE 700 PRINTED IN U.S.A.

MINNEAPOLIS-HONEYWELL REG. CO. BROWN INSTRUMENTS DIVISION, PHILADELPHIA, PA.