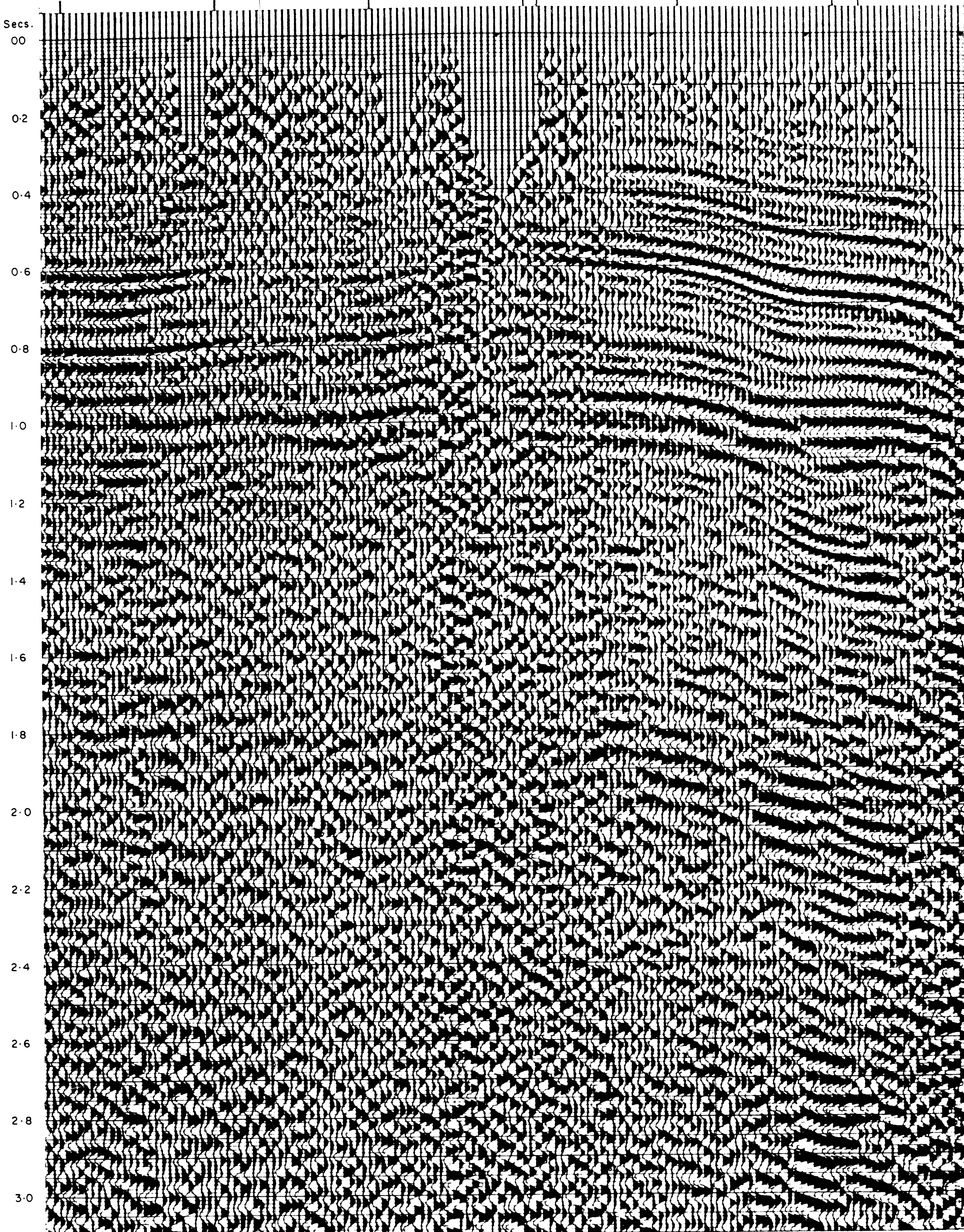


97 109 121 133 145 157



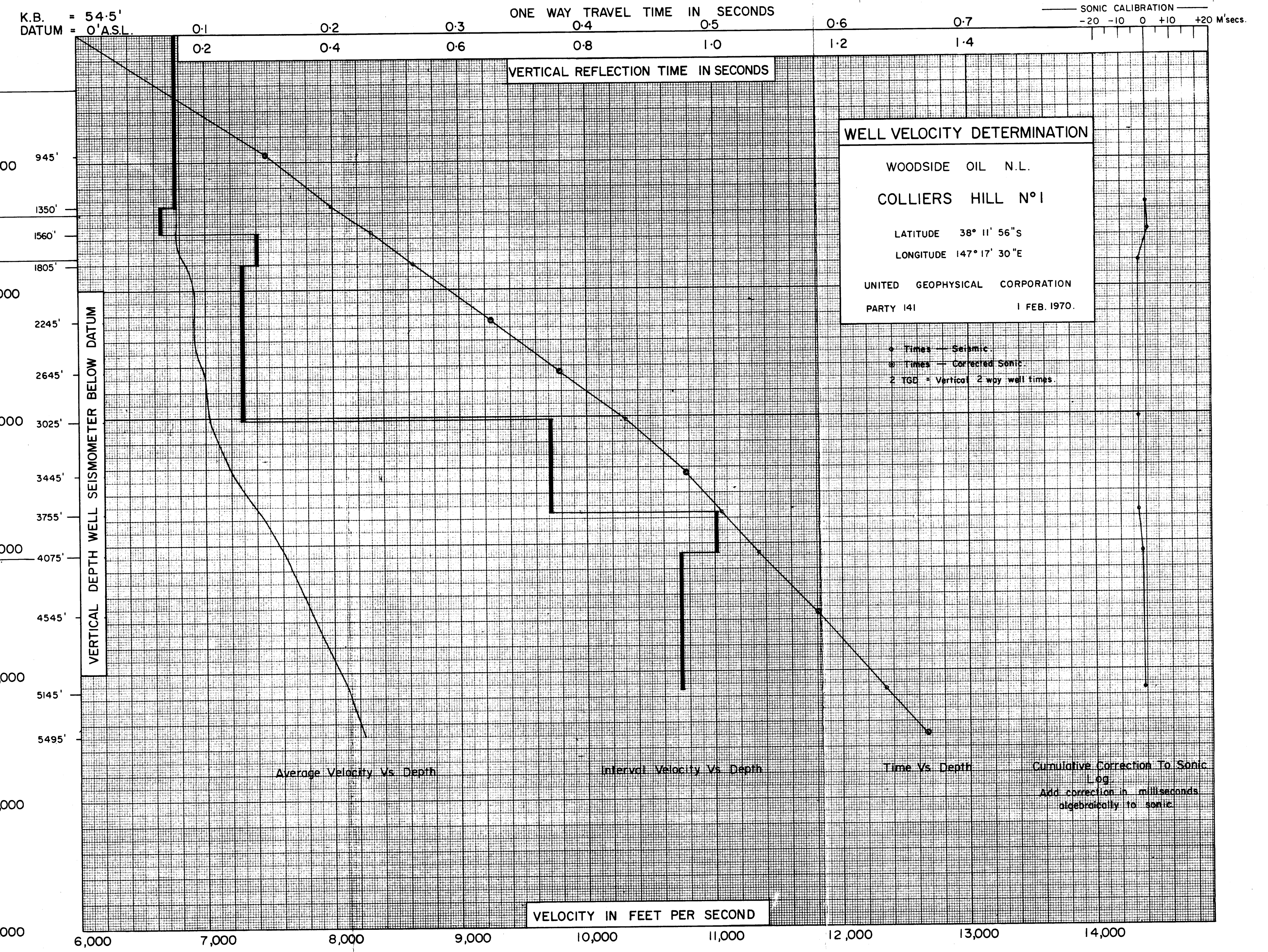
DEPT. NAT. RES & ENV
PE904809



2 TGD = 0.132 secs — Top Gippsland Limestone — (423')
 0.413 — Top Lakes Entrance Formation — (1405')
 0.512 — Top Latrobe Valley Coal Measures — (1746')

Top Golden Beach Beds — (4077')

NOTE
 Vertical two way well times were applied to the section. No initiation lags were applied.



K.B. = 54.5'
 DATUM = 0' ASL

ONE WAY TRAVEL TIME IN SECONDS

VERTICAL REFLECTION TIME IN SECONDS

WELL VELOCITY DETERMINATION

WOODSIDE OIL N.L.
 COLLIERS HILL N°1
 LATITUDE 38° 11' 56" S
 LONGITUDE 147° 17' 30" E
 UNITED GEOPHYSICAL CORPORATION
 PARTY 141 1 FEB. 1970.

◆ Times — Sonic
 ○ Times — Corrected Sonic
 2 TGD = Vertical 2 way well times

SONIC CALIBRATION
 -20 -10 0 +10 +20 M'secs.

VERTICAL DEPTH WELL SEISMOMETER BELOW DATUM

Average Velocity Vs. Depth

Interval Velocity Vs. Depth

Time Vs. Depth

Cumulative Correction To Sonic Log
 Add correction in milliseconds algebraically to sonic

VELOCITY IN FEET PER SECOND