

# VERTICAL SEISMIC PROFILE

ZERO OFFSET VSP PLOT 3

VELOCITY FILTERING

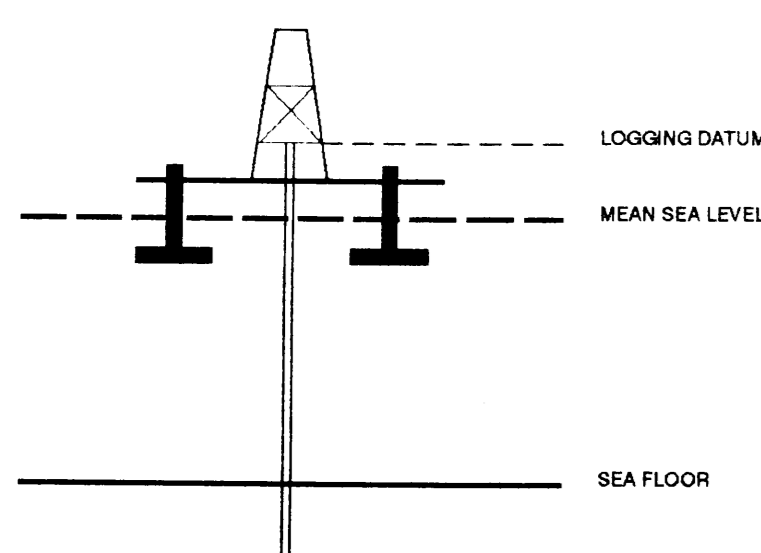


Company: ESSO AUSTRALIA LTD  
 Well: TURRUM-5  
 Field: TURRUM  
 Country: AUSTRALIA  
 Reference No: SYJ-561158/561159 Interval: 2755.00 to 106.00  
 Date Logged: 25&12 SEP 1995 Date Processed: 26 SEP 1995  
 Location: 038 14' 55.083" S 148 12' 03.099" E  
 Elevations: KB: 25.00 DF: 27.70 GL: -60.30  
 Permanent Datum: MSL Depth Units: METRES  
 FIELD RECORDING: Engineer: RJONSSON Location: Program Version: 700-427  
 COMPUTATION: Analyst: STCHERKASHNEV Centre: SYJ Baseline: 20.5

The well name, location and baseline reference data were furnished by the customer.

All interpretations are opinions based on information furnished from electrical or other measurements and are not guaranteed by Schlumberger. Schlumberger does not guarantee the accuracy or completeness of any interpretations, and we shall not accept in the case of gross or willful negligence. Schlumberger shall not be liable for any damages, including consequential damages, arising from the use of the information furnished by Schlumberger. Schlumberger shall not be liable for any damages, including consequential damages, arising from the use of the information furnished by Schlumberger. Schlumberger shall not be liable for any damages, including consequential damages, arising from the use of the information furnished by Schlumberger.

ELEVATION ABOVE MEAN SEA LEVEL  
 Logging Datum: 25.00  
 Seismic Reference Datum: 0.00



Total Number of Levels: 84  
 Depth Reference: SRD  
 Time Reference: SRD

Run	Date	Tool Type	Bit Size Depth	Casing Size Depth	Top Depth	Bottom Depth
1	25-08-95	DL-LDLGR	17.5 IN	13.3 IN	106 M	656 M
2	12-09-95	DL-LDLGR	12.2 IN	13.3 IN	656 M	2755 M

VSP Run	Date	Gun Offset	Hydro Offset	Gun Elevation	Hydro Elevation	Gun Azimuth	Hydro Azimuth
1	15-08-95	50 M	50 M	5 M BELOW MSL	10 M BELOW MSL	258 DEG	258 DEG

FOLD HERE

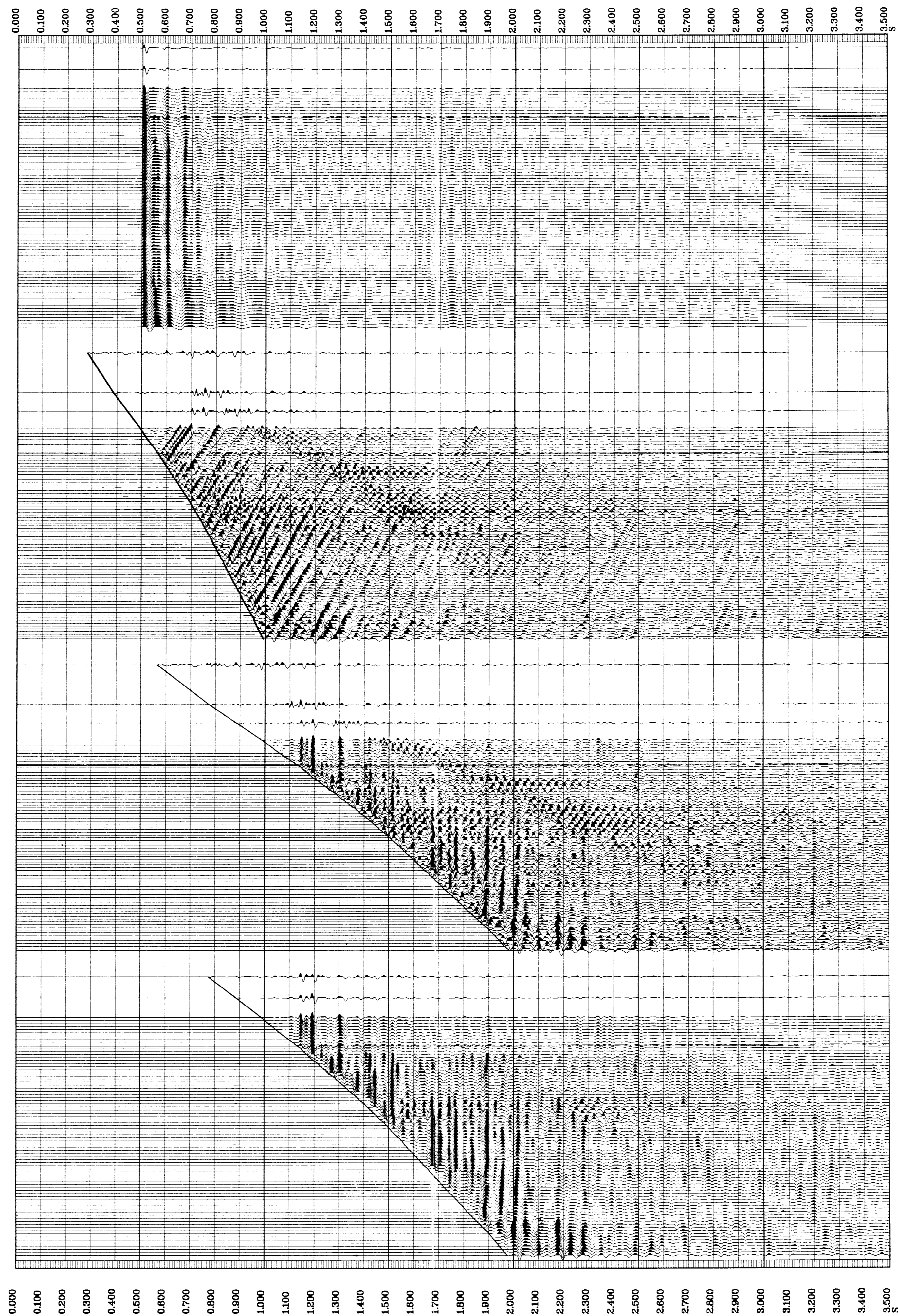
**\* VELOCITY FILTER \***  
 VERTICAL COMPONENT.  
 DOWNGOING WAVEFIELD  
 PROCESSING SEQUENCE:  
 MEDIAN STACK APPLIED  
 STATIC CORRECTION TO MSL : 6.56 MS  
 BAND PASS FILTER : 5-70 HZ  
 NORMALISATION GATE : 100 MS  
 TIME VARYING GAIN : (T/T0)\*\*1.00  
 7 LEVEL MEDIAN ESTIMATE OF DOWNGOING WAVEFIELD  
 VERTICAL SCALE : 10 CM/SEC  
 POLARITY (S.E.G.) : NORMAL  
 0.5 MSEC TIME

**\* VELOCITY FILTER \***  
 VERTICAL COMPONENT.  
 RESIDUAL WAVEFIELD  
 PROCESSING SEQUENCE:  
 MEDIAN STACK APPLIED  
 STATIC CORRECTION TO MSL : 6.56 MS  
 BAND PASS FILTER : 5-70 HZ  
 NORMALISATION GATE : 100 MS  
 TIME VARYING GAIN : (T/T0)\*\*1.00  
 DOWNGOING WAVEFIELD SUBTRACTION  
 RESIDUAL WAVEFIELD  
 VERTICAL SCALE : 10 CM/SEC  
 POLARITY (S.E.G.) : NORMAL  
 ONE WAY TIME

**\* VELOCITY FILTER \***  
 VERTICAL COMPONENT.  
 RESIDUAL WAVEFIELD  
 PROCESSING SEQUENCE:  
 MEDIAN STACK APPLIED  
 STATIC CORRECTION TO MSL : 6.56 MS  
 BAND PASS FILTER : 5-70 HZ  
 NORMALISATION GATE : 100 MS  
 TIME VARYING GAIN : (T/T0)\*\*1.00  
 DOWNGOING WAVEFIELD SUBTRACTION  
 RESIDUAL WAVEFIELD  
 VERTICAL SCALE : 10 CM/SEC  
 POLARITY (S.E.G.) : NORMAL  
 TWO WAY TIME

**\* VELOCITY FILTER \***  
 VERTICAL COMPONENT.  
 ENHANCED UPGOING WAVEFIELD  
 PROCESSING SEQUENCE:  
 MEDIAN STACK APPLIED  
 STATIC CORRECTION TO MSL : 6.56 MS  
 BAND PASS FILTER : 5-70 HZ  
 NORMALISATION GATE : 100 MS  
 TIME VARYING GAIN : (T/T0)\*\*1.00  
 DOWNGOING WAVEFIELD SUBTRACTION  
 5 LEVEL ENHANCED UPGOING WAVEFIELD  
 VERTICAL SCALE : 10 CM/SEC  
 POLARITY (S.E.G.) : NORMAL  
 TWO WAY TIME

RAW DEPTH M	TRUE VERTICAL DEPTH MSL	TRANSIT TIME S	LEVEL NO
938.0	913.0	0.387	83
1075.0	1060.0	0.443	82
1229.0	1196.0	0.502	80
1380.0	1352.0	0.516	79
1529.0	1501.0	0.531	78
1676.0	1648.0	0.549	74
1821.0	1793.0	0.567	71
1964.0	1936.0	0.578	67
2105.0	2077.0	0.595	63
2244.0	2216.0	0.608	60
2381.0	2353.0	0.623	57
2516.0	2488.0	0.639	53
2649.0	2621.0	0.650	50
2780.0	2752.0	0.662	47
2909.0	2881.0	0.675	43
3036.0	3008.0	0.687	40
3161.0	3133.0	0.701	37
3284.0	3256.0	0.715	33
3405.0	3377.0	0.729	30
3524.0	3496.0	0.743	27
3641.0	3613.0	0.757	23
3756.0	3728.0	0.771	20
3869.0	3841.0	0.785	17
3980.0	3952.0	0.799	14
4089.0	4061.0	0.812	11
4196.0	4168.0	0.825	8
4301.0	4273.0	0.837	5
4404.0	4376.0	0.849	2
4505.0	4477.0	0.861	
4604.0	4576.0	0.872	
4701.0	4673.0	0.883	
4796.0	4768.0	0.893	
4889.0	4861.0	0.903	
4980.0	4952.0	0.912	
5069.0	5041.0	0.921	
5156.0	5128.0	0.929	
5241.0	5213.0	0.937	
5324.0	5296.0	0.944	
5405.0	5377.0	0.951	
5484.0	5456.0	0.957	
5561.0	5533.0	0.963	
5636.0	5608.0	0.968	
5709.0	5681.0	0.973	
5780.0	5752.0	0.978	
5849.0	5821.0	0.982	
5916.0	5888.0	0.986	
5981.0	5953.0	0.989	
6044.0	6016.0	0.992	
6105.0	6077.0	0.994	
6164.0	6136.0	0.996	
6221.0	6193.0	0.997	
6276.0	6248.0	0.998	
6329.0	6301.0	0.999	
6380.0	6352.0	1.000	
6429.0	6401.0	1.001	
6476.0	6448.0	1.002	
6521.0	6493.0	1.003	
6564.0	6536.0	1.004	
6605.0	6577.0	1.005	
6644.0	6616.0	1.006	
6681.0	6653.0	1.007	
6716.0	6688.0	1.008	
6749.0	6721.0	1.009	
6780.0	6752.0	1.010	
6809.0	6781.0	1.011	
6836.0	6808.0	1.012	
6861.0	6833.0	1.013	
6884.0	6856.0	1.014	
6905.0	6877.0	1.015	
6924.0	6896.0	1.016	
6941.0	6913.0	1.017	
6956.0	6928.0	1.018	
6969.0	6941.0	1.019	
6980.0	6952.0	1.020	
6989.0	6961.0	1.021	
6996.0	6968.0	1.022	
7001.0	6973.0	1.023	
7004.0	6976.0	1.024	
7005.0	6977.0	1.025	
7005.0	6977.0	1.025	
7004.0	6976.0	1.024	
7001.0	6973.0	1.023	
6996.0	6968.0	1.022	
6989.0	6961.0	1.021	
6980.0	6952.0	1.020	
6969.0	6941.0	1.019	
6956.0	6928.0	1.018	
6941.0	6913.0	1.017	
6924.0	6896.0	1.016	
6905.0	6877.0	1.015	
6884.0	6856.0	1.014	
6861.0	6833.0	1.013	
6836.0	6808.0	1.012	
6809.0	6781.0	1.011	
6780.0	6752.0	1.010	
6749.0	6721.0	1.009	
6716.0	6688.0	1.008	
6681.0	6653.0	1.007	
6644.0	6616.0	1.006	
6605.0	6577.0	1.005	
6564.0	6536.0	1.004	
6521.0	6493.0	1.003	
6476.0	6448.0	1.002	
6429.0	6401.0	1.001	
6380.0	6352.0	1.000	
6329.0	6301.0	0.999	
6276.0	6248.0	0.998	
6221.0	6193.0	0.997	
6164.0	6136.0	0.996	
6105.0	6077.0	0.995	
6044.0	6016.0	0.994	
5981.0	5953.0	0.993	
5916.0	5888.0	0.992	
5849.0	5821.0	0.991	
5780.0	5752.0	0.990	
5709.0	5681.0	0.989	
5636.0	5608.0	0.988	
5561.0	5533.0	0.987	
5484.0	5456.0	0.986	
5405.0	5377.0	0.985	
5324.0	5296.0	0.984	
5241.0	5213.0	0.983	
5156.0	5128.0	0.982	
5069.0	5041.0	0.981	
4980.0	4952.0	0.980	
4889.0	4861.0	0.979	
4796.0	4768.0	0.978	
4701.0	4673.0	0.977	
4604.0	4576.0	0.976	
4505.0	4477.0	0.975	
4404.0	4376.0	0.974	
4301.0	4273.0	0.973	
4196.0	4168.0	0.972	
4089.0	4061.0	0.971	
3980.0	3952.0	0.970	
3869.0	3841.0	0.969	
3756.0	3728.0	0.968	
3641.0	3613.0	0.967	
3524.0	3496.0	0.966	
3405.0	3377.0	0.965	
3284.0	3256.0	0.964	
3161.0	3133.0	0.963	
3036.0	3008.0	0.962	
2909.0	2881.0	0.961	
2780.0	2752.0	0.960	
2649.0	2621.0	0.959	
2516.0	2488.0	0.958	
2381.0	2353.0	0.957	
2244.0	2216.0	0.956	
2105.0	2077.0	0.955	
1964.0	1936.0	0.954	
1821.0	1793.0	0.953	
1676.0	1648.0	0.952	
1529.0	1501.0	0.951	
1380.0	1352.0	0.950	
1229.0	1196.0	0.949	
1075.0	1060.0	0.948	
938.0	913.0	0.947	



COMPANY ESSO AUSTRALIA LTD  
 FIELD TURRUM  
 WELL TURRUM-5  
 COUNTRY AUSTRALIA

