

# VERTICAL SEISMIC PROFILE

ZERO OFFSET VSP PLOT 2

AMPLITUDE RECOVERY



DEPT. NAT. RES. & ENV. FE906502

Company: ESSO AUSTRALIA LTD  
 Well: TURRUM-5  
 Field: TURRUM  
 Country: AUSTRALIA

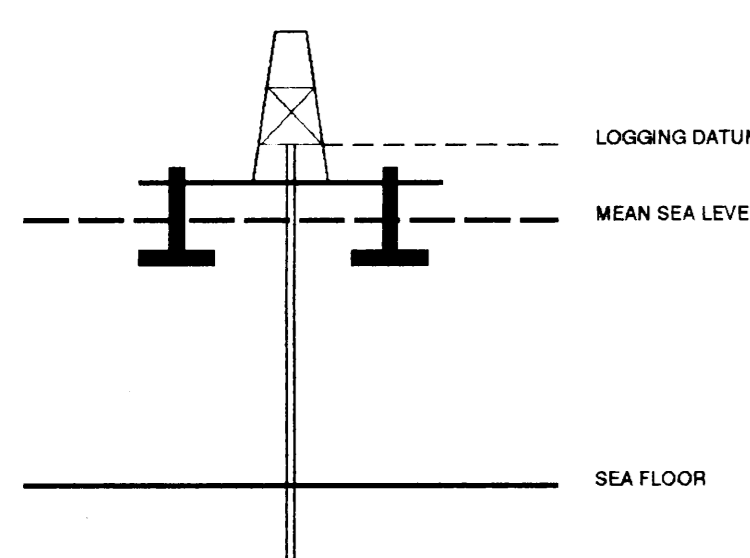
Reference No: SYJ-561158/561159 Interval: 2755.00 to 106.00  
 Date Logged: 25/12 SEP 1995 Date Processed: 26 SEP 1995

Location: 038 14' 55.083" S 148 12' 03.099" E  
 Elevations: KB: 25.00 DF: 27.70 GL: -60.30  
 Permanent Datum: MSL Depth Units: METRES

FIELD RECORDING: Engineer: R.JONSSON Location: Program Version: 7C0-427  
 COMPUTATION: Analyst: S.TCHERKASHNEV Centre: SYJ Baseline: 20.5

ELEVATION ABOVE MEAN SEA LEVEL

Logging Datum: 25.00  
 Seismic Reference Datum: 0.00



Total Number of Levels: 84  
 Depth Reference: SRD  
 Time Reference: SRD

Run	Date	Tool Type	Bit Size Depth	Casing Size Depth	Top	Bottom
1	26-09-95	DLL-LDL-GR	17.5 IN	13.3 IN	106 M	656 M
2	12-09-95	DLL-LDL-GR	12.2 IN	13.3 IN	656 M	2765 M

VSP Run	Date	Gun Offset	Hydro Offset	Gun Elevation	Hydro Elevation	Gun Azimuth	Hydro Azimuth
1	15-08-95	50 M	50 M	5 M BELOW MSL	10 M BELOW MSL	258 DEG	258 DEG

REMARKS

All interpretations are based on information from electrical or other measurements and do not constitute the accuracy of any interpretation. We will not be liable for any loss or damage, including consequential or economic loss, incurred or sustained by anyone resulting from any interpretation made by any of our officers, agents or employees. These interpretations are also subject to Clause 4 of our General Terms and Conditions as set out in our current Price Schedule.

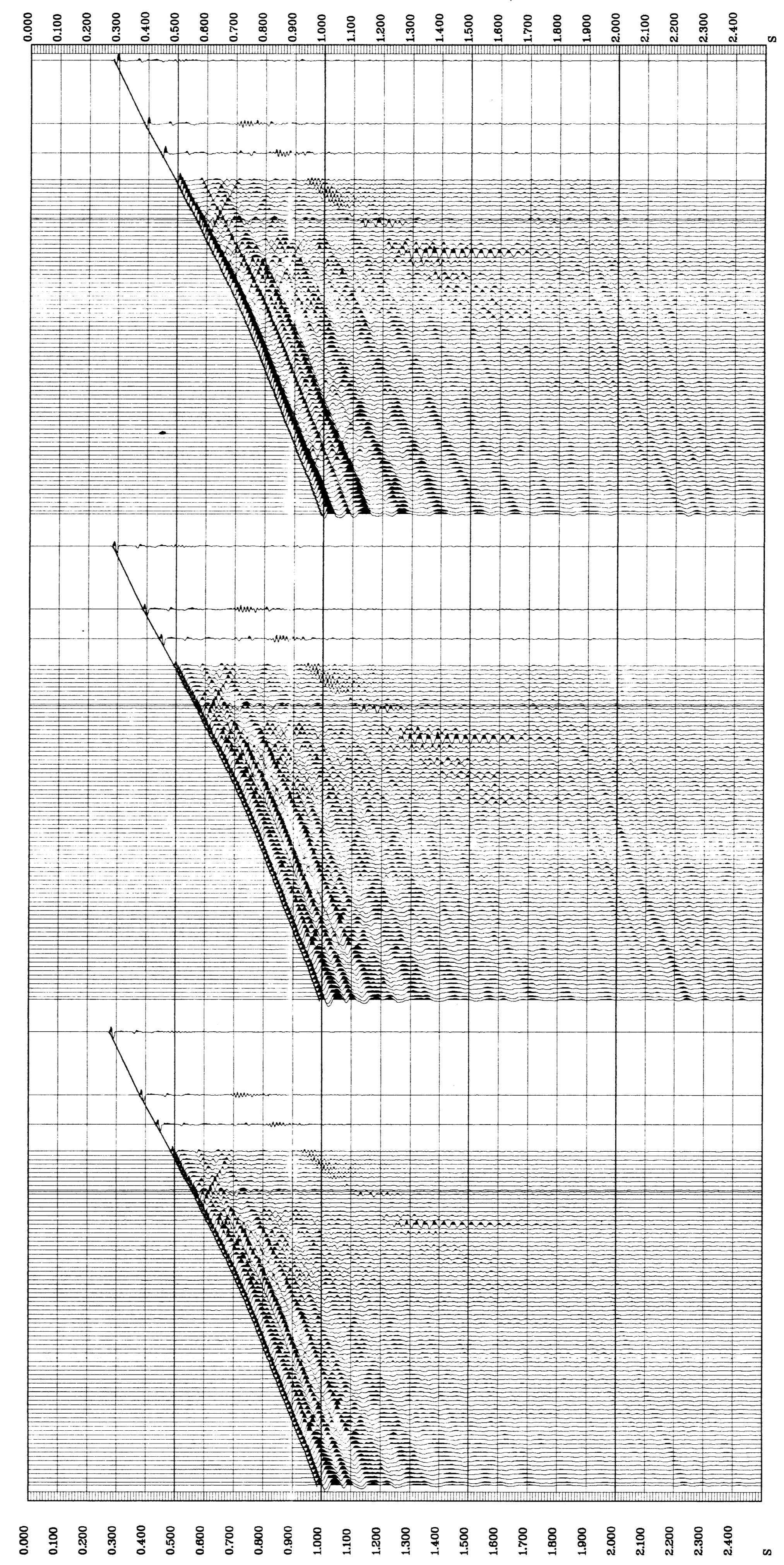
FOLD HERE

**\* AMPLITUDE RECOVERY \***  
 VERTICAL COMPONENT.  
 PROCESSING SEQUENCE:  
 MEDIAN STACK APPLIED  
 STATIC CORRECTION TO MSL: 6.56 MS  
 BAND PASS FILTER : 5-100 HZ  
 NORMALISATION GATE : 100 MS  
 TIME VARYING GAIN : T/TO\*\*1.00  
 VERTICAL SCALE : 10 CM/SEC  
 POLARITY (S.E.G.) : REVERSE

**\* AMPLITUDE RECOVERY \***  
 VERTICAL COMPONENT.  
 PROCESSING SEQUENCE:  
 MEDIAN STACK APPLIED  
 STATIC CORRECTION TO MSL: 6.56 MS  
 BAND PASS FILTER : 5-100 HZ  
 NORMALISATION GATE : 100 MS  
 TIME VARYING GAIN : T/TO\*\*1.00  
 VERTICAL SCALE : 10 CM/SEC  
 POLARITY (S.E.G.) : NORMAL

**\* STACKED DATA \***  
 VERTICAL COMPONENT.  
 PROCESSING SEQUENCE:  
 MEDIAN COHERENCY STACK APPLIED  
 NO STATIC CORRECTION APPLIED  
 BANDPASS FILTER : 4 - 120 HZ  
 VERTICAL SCALE : 10 CM/SEC  
 POLARITY (S.E.G.) : NORMAL

RAW DEPTH M	TRUE VERTICAL DEPTH MSL M	TRANSIT TIME S	LEVEL NO	MAX AMPLITUDE	MIN AMPLITUDE
645.0	650.0	0.283	84	107.665	-89.584
936.0	913.0	0.387	83	124.700	-86.380
1075.0	1060.0	0.443	82	123.597	-84.384
1096.0	1175.0	0.494	81	122.066	-82.135
1140.0	1210.0	0.509	79	115.841	-80.821
1296.0	1250.0	0.524	77	112.942	-84.310
1320.0	1290.0	0.528	75	112.210	-80.159
1360.0	1335.0	0.534	73	95.837	-76.381
1400.0	1375.0	0.537	70	99.495	-85.340
1410.0	1415.0	0.538	68	112.844	-72.964
1480.0	1455.0	0.548	66	85.529	-65.608
1520.0	1495.0	0.554	64	74.561	-67.514
1590.0	1535.0	0.559	62	78.875	-64.274
1600.0	1575.0	0.564	60	78.327	-60.520
1640.0	1615.0	0.568	58	85.280	-69.078
1690.0	1655.0	0.572	56	85.021	-69.508
1730.0	1695.0	0.575	54	86.941	-77.479
1760.0	1735.0	0.578	52	78.081	-74.436
1800.0	1775.0	0.574	50	75.471	-69.223
1840.0	1815.0	0.572	48	76.403	-67.772
1890.0	1855.0	0.574	46	81.782	-60.160
1900.0	1895.0	0.572	44	82.885	-64.159
1960.0	1935.0	0.574	42	81.195	-66.762
2000.0	1975.0	0.577	40	79.828	-67.048
2040.0	2015.0	0.578	37	81.548	-67.168
2080.0	2055.0	0.580	35	79.814	-60.132
2120.0	2095.0	0.581	33	82.221	-68.714
2160.0	2135.0	0.582	31	82.878	-60.683
2200.0	2175.0	0.583	29	85.415	-60.381
2240.0	2215.0	0.585	27	79.878	-67.280
2280.0	2255.0	0.587	25	90.810	-68.502
2320.0	2295.0	0.588	23	88.804	-67.563
2360.0	2335.0	0.590	21	88.154	-64.240
2400.0	2375.0	0.592	19	74.253	-63.347
2440.0	2415.0	0.593	17	75.844	-48.301
2480.0	2455.0	0.594	15	74.253	-47.088
2520.0	2495.0	0.597	13	73.408	-44.253
2560.0	2535.0	0.599	11	69.725	-44.681
2600.0	2575.0	0.602	9	77.053	-44.808
2640.0	2615.0	0.602	7	70.963	-44.421
2680.0	2655.0	0.602	5	70.963	-44.835
2720.0	2695.0	0.601	3	73.550	-44.840
2755.0	2735.0	0.602	1	70.469	-44.430



COMPANY: ESSO AUSTRALIA LTD  
 FIELD: TURRUM  
 WELL: TURRUM-5  
 COUNTRY: AUSTRALIA

**Schlumberger**