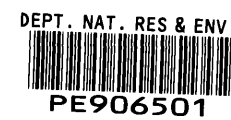


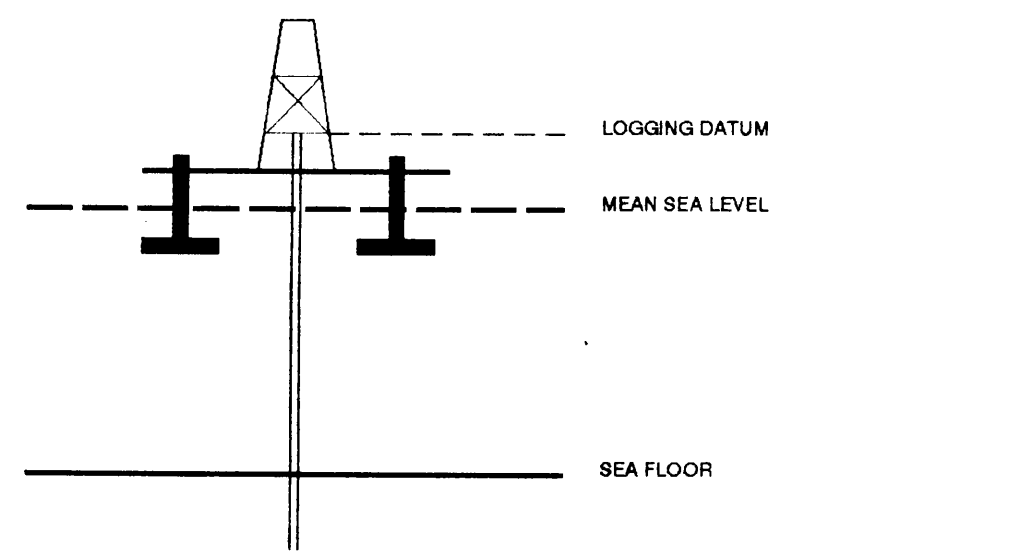
VERTICAL SEISMIC PROFILE

ZERO OFFSET VSP PLOT 1
STACKED DATA



Company: ESSO AUSTRALIA LTD
Well: TURRUM-5
Field: TURRUM
Country: AUSTRALIA
Reference No: SYJ-561158/561159 Interval: 2755.00 to 106.00
Date Logged: 25&12 SEP 1995 Date Processed: 26 SEP 1995
Location: 038 14' 55.083" S 148 12' 03.099" E
Elevations: KB: 25.00 DF: 27.70 GL: -60.30
Permanent Datum: MSL Depth Units: METRES
FIELD RECORDING: Engineer: R.JONSSON Location: Program Version: 700427
COMPUTATION: Analyst: S.TCHERKASHNEV Centre: SYJ Baseline: 20.6

ELEVATION ABOVE MEAN SEA LEVEL
Logging Datum: 25.00
Seismic Reference Datum: 0.00



Total Number of Levels: 84

Depth Reference: SRD

Time Reference: SRD

Run	Date	Tool Type	Bit Size/Depth	Casing Size/Depth	Top Depth	Bottom Depth
1	25-08-95	DLL-LDL-GR	17.5 IN	13.3 IN	106 M	658 M
2	12-09-95	DLL-LDL-GR	12.2 IN	13.3 IN	656 M	2755 M

VSP Run	Date	Gun Offset	Hydro Offset	Gun Elevation	Hydro Elevation	Gun Azimuth	Hydro Azimuth
1	15-08-95	50 M	50 M	5 M BELOW MSL	10 M BELOW MSL	258 DEG	258 DEG

REMARKS

All interpretations are opinions based on information from electrical or other measurements and we cannot, and do not guarantee the accuracy or correctness of any interpretations, and we shall not, except in the case of gross or willful negligence on our part, be liable or responsible for any loss, costs, damages or expenses incurred or sustained by anyone resulting from any interpretation made by any of our officers, agents or employees. These interpretations are also subject to change if our general terms and conditions as set out in our current Price Schedule.

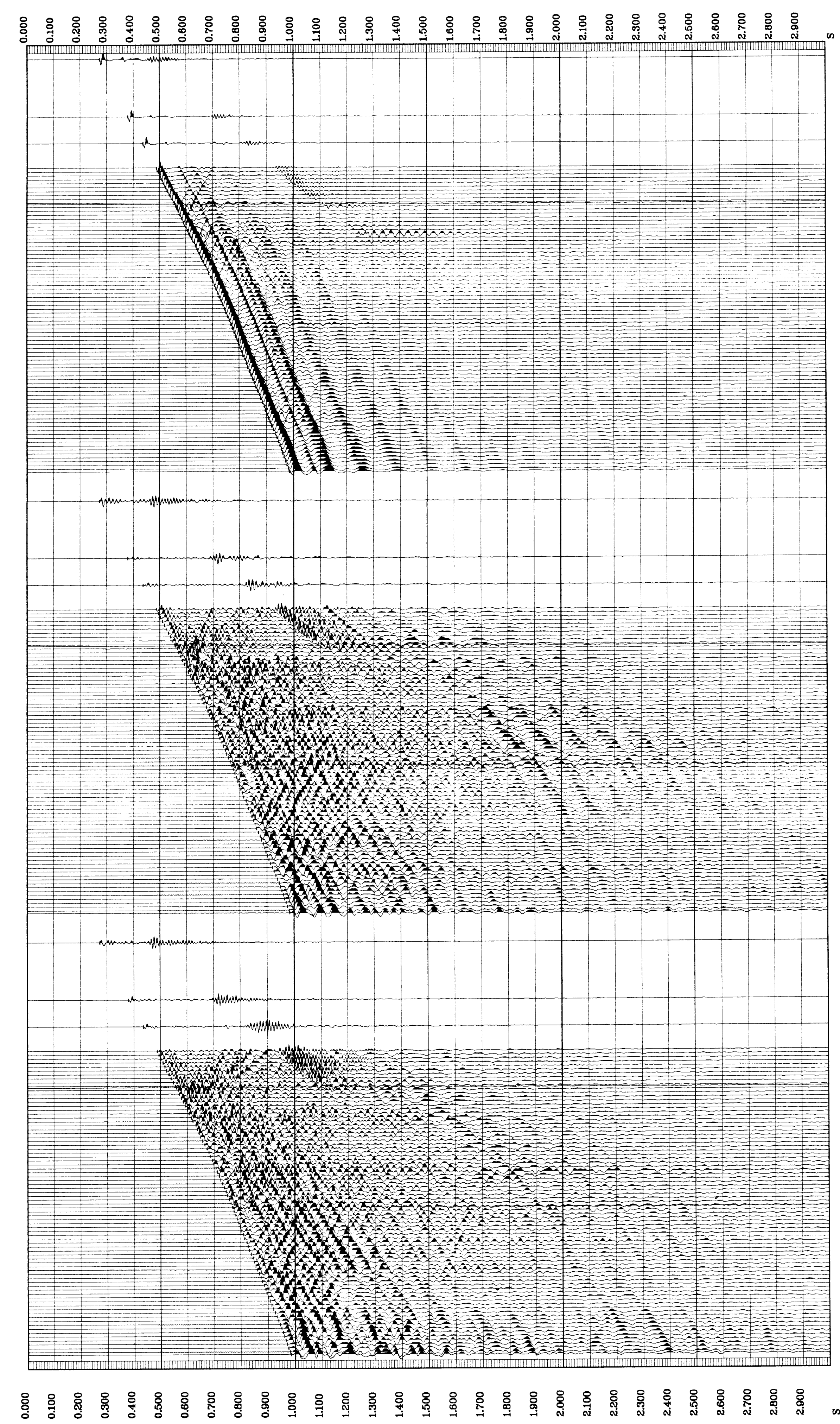
FIELD HERE

**** MEDIAN STACK ****
(DOWNHOLE DATA)
MEDIAN COHERENCY STACK OF THE DOWNHOLE VERTICAL COMPONENT.
PROCESSING SEQUENCE:
MEDIAN STACK APPLIED
BANDPASS FILTER : 4 - 120 HZ
VERTICAL SCALE : 10 CM/SEC
POLARITY (S.E.G.) : REVERSE
TIMES REFERENCED TO HYDROPHONE

**** MEDIAN STACK ****
(DOWNHOLE DATA)
MEDIAN COHERENCY STACK OF THE DOWNHOLE 2. HORIZONTAL COMPONENT
PROCESSING SEQUENCE:
MEDIAN STACK APPLIED
BANDPASS FILTER : 4 - 120 HZ
VERTICAL SCALE : 10 CM/SEC
POLARITY (S.E.G.) : REVERSE
TIMES REFERENCED TO HYDROPHONE

**** MEDIAN STACK ****
(DOWNHOLE DATA)
MEDIAN COHERENCY STACK OF THE DOWNHOLE 1. HORIZONTAL COMPONENT
PROCESSING SEQUENCE:
MEDIAN STACK APPLIED
BANDPASS FILTER : 4 - 120 HZ
VERTICAL SCALE : 10 CM/SEC
POLARITY (S.E.G.) : REVERSE
TIMES REFERENCED TO HYDROPHONE

RAW DEPTH M	TRANSIT TIME S	LEVEL NO	MAX AMPLITUDE	MIN AMPLITUDE
845.0	0.275	84	1174.692	-1107.6915
938.0	0.381	83	1014.667	-77.9475
1075.0	0.437	82	687.519	-4.4800
1390.0	0.488	81	704.223	-76.8825
1240.0	0.502	79	504.415	-445.2575
1280.0	0.517	77	532.403	-417.8745
1320.0	0.532	75	508.249	-390.4875
1360.0	0.547	73	1005.921	-746.3187
1400.0	0.562	70	1070.960	-846.9911
1440.0	0.577	68	1124.475	-974.4999
1480.0	0.592	66	850.251	-675.8994
1520.0	0.607	64	455.263	-475.9095
1560.0	0.622	62	534.941	-565.8942
1600.0	0.637	60	353.929	-355.5389
1640.0	0.652	58	292.990	-301.1817
1680.0	0.667	56	466.254	-511.7908
1720.0	0.682	54	600.984	-671.1401
1760.0	0.697	52	331.454	-307.7728
1800.0	0.712	50	525.214	-471.8678
1840.0	0.727	48	391.459	-330.7171
1880.0	0.742	46	275.255	-218.2545
1920.0	0.757	44	261.084	-179.2187
1960.0	0.772	42	341.371	-187.5965
2000.0	0.787	40	247.287	-103.6857
2040.0	0.802	37	235.810	-156.0650
2080.0	0.817	35	187.008	-124.2625
2120.0	0.832	33	195.877	-135.5025
2160.0	0.847	31	197.272	-148.7920
2200.0	0.862	29	306.652	-152.6500
2240.0	0.877	27	150.155	-119.6375
2280.0	0.892	25	164.215	-117.4247
2320.0	0.907	23	196.786	-113.8781
2360.0	0.922	21	171.775	-101.4525
2400.0	0.937	19	138.135	-81.7027
2440.0	0.952	17	118.683	-75.7088
2480.0	0.967	15	108.712	-61.3207
2520.0	0.982	13	83.184	-41.8879
2560.0	0.997	11	63.941	-24.4731
2600.0	1.012	9	76.424	-47.8704
2640.0	1.027	7	66.241	-41.2014
2680.0	1.042	5	70.874	-41.2008
2720.0	1.057	3	67.945	-37.0452
2753.0	1.065	1	77.003	-41.4746



COMPANY: ESSO AUSTRALIA LTD
FIELD: TURRUM
WELL: TURRUM-5
COUNTRY: AUSTRALIA

Schlumberger