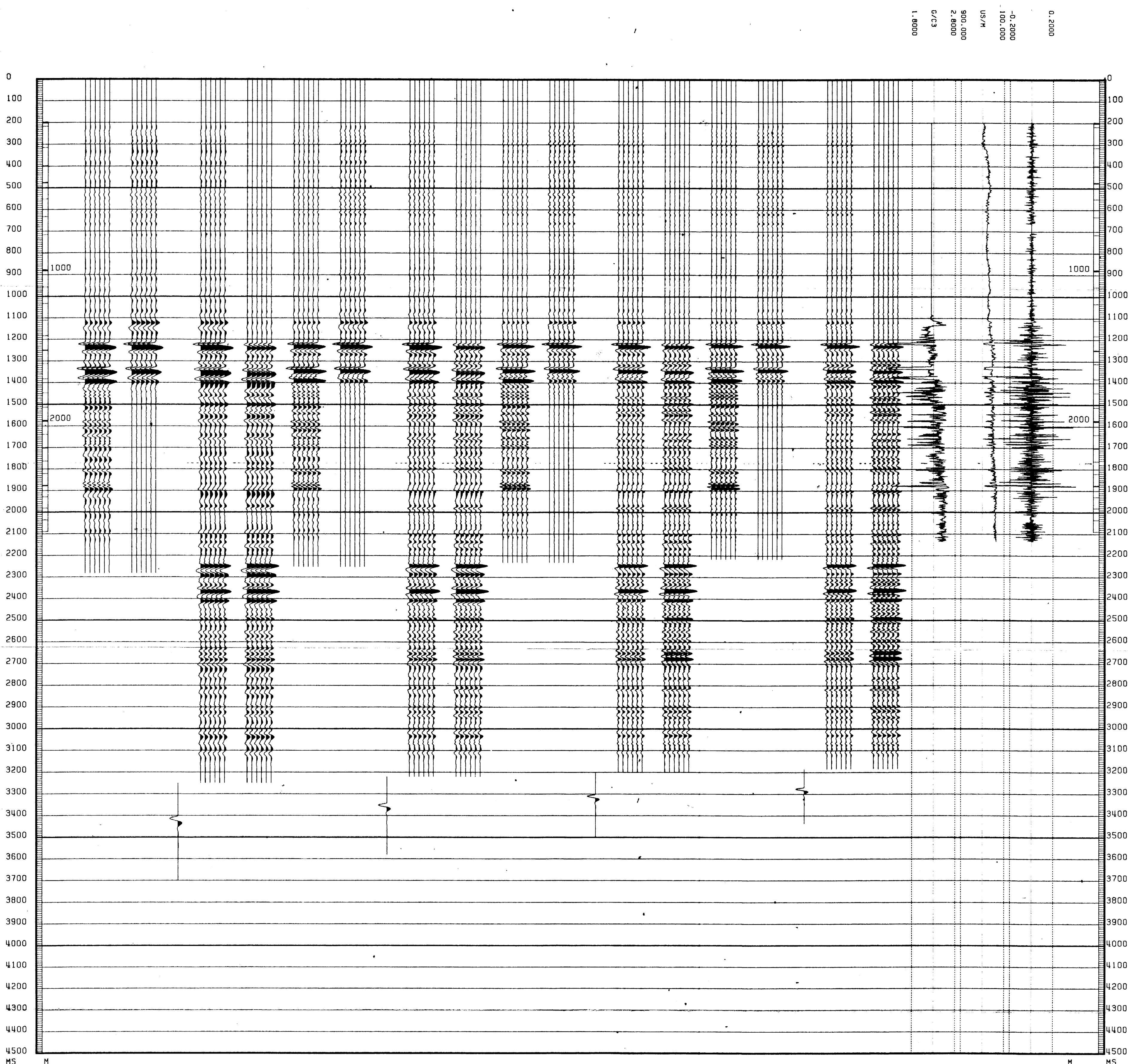


GEOGRAM FROM WST
RICKER WAVELETS
MINIMUM PHASE
REVERSE POLARITY

SNAPPER - 6

DEPT. NAT. RES. & ENV.
PE907566

REFLECTION	SONIC	DENSITY	MULTIPLES ONLY 35HZ	PRIMARYES AND MULTIPLES 35HZ	SIGNATURE: CORRESPONDS TO R REFL. COEFF. OF -0.5 35HZ	PRIMARYES WITH TRANSMISSION LOSS 35HZ	PRIMARYES 35HZ	MULTIPLES ONLY 30HZ	PRIMARYES AND MULTIPLES 30HZ	SIGNATURE: CORRESPONDS TO R REFL. COEFF. OF -0.5 30HZ	PRIMARYES WITH TRANSMISSION LOSS 30HZ	PRIMARYES 30HZ	MULTIPLES ONLY 25HZ	PRIMARYES AND MULTIPLES 25HZ	SIGNATURE: CORRESPONDS TO R REFL. COEFF. OF -0.5 25HZ	PRIMARYES WITH TRANSMISSION LOSS 25HZ	PRIMARYES 25HZ	MULTIPLES ONLY 20HZ	PRIMARYES AND MULTIPLES 20HZ	SIGNATURE: CORRESPONDS TO R REFL. COEFF. OF -0.5 20HZ	PRIMARYES WITH TRANSMISSION LOSS 20HZ	PRIMARYES 20HZ
------------	-------	---------	---------------------	------------------------------	---	---------------------------------------	----------------	---------------------	------------------------------	---	---------------------------------------	----------------	---------------------	------------------------------	---	---------------------------------------	----------------	---------------------	------------------------------	---	---------------------------------------	----------------



COMPANY ESSO AUSTRALIA LTD
FIELD WILDCAT
WELL SNAPPER - 6
COUNTRY AUSTRALIA