

ESSO-BHP SNAPPER-5, GIPPSLAND BASIN.



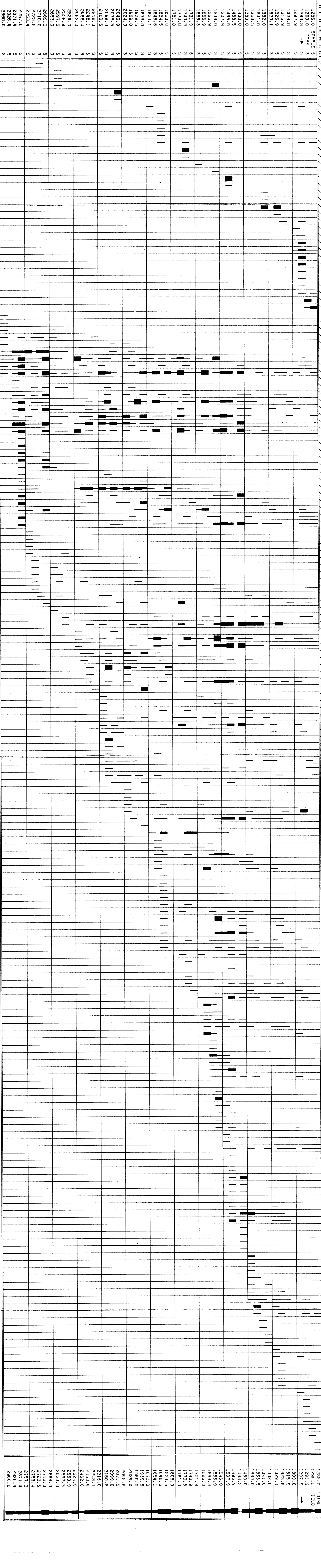
SPECIES

LEGEND

- 1 VERY RARE
- 2 RARE
- 3 COMMON
- 4 VERY COMMON
- 5 ABUNDANT
- 6 VERY ABUNDANT
- 7 DOMINANT
- 8 VERY DOMINANT
- 9 DOMINANT
- 10 VERY DOMINANT
- 11 VERY DOMINANT
- 12 VERY DOMINANT
- 13 VERY DOMINANT
- 14 VERY DOMINANT
- 15 VERY DOMINANT
- 16 VERY DOMINANT
- 17 VERY DOMINANT
- 18 VERY DOMINANT
- 19 VERY DOMINANT
- 20 VERY DOMINANT
- 21 VERY DOMINANT
- 22 VERY DOMINANT
- 23 VERY DOMINANT
- 24 VERY DOMINANT
- 25 VERY DOMINANT
- 26 VERY DOMINANT
- 27 VERY DOMINANT
- 28 VERY DOMINANT
- 29 VERY DOMINANT
- 30 VERY DOMINANT
- 31 VERY DOMINANT
- 32 VERY DOMINANT
- 33 VERY DOMINANT
- 34 VERY DOMINANT
- 35 VERY DOMINANT
- 36 VERY DOMINANT
- 37 VERY DOMINANT
- 38 VERY DOMINANT
- 39 VERY DOMINANT
- 40 VERY DOMINANT
- 41 VERY DOMINANT
- 42 VERY DOMINANT
- 43 VERY DOMINANT
- 44 VERY DOMINANT
- 45 VERY DOMINANT
- 46 VERY DOMINANT
- 47 VERY DOMINANT
- 48 VERY DOMINANT
- 49 VERY DOMINANT
- 50 VERY DOMINANT
- 51 VERY DOMINANT
- 52 VERY DOMINANT
- 53 VERY DOMINANT
- 54 VERY DOMINANT
- 55 VERY DOMINANT
- 56 VERY DOMINANT
- 57 VERY DOMINANT
- 58 VERY DOMINANT
- 59 VERY DOMINANT
- 60 VERY DOMINANT
- 61 VERY DOMINANT
- 62 VERY DOMINANT
- 63 VERY DOMINANT
- 64 VERY DOMINANT
- 65 VERY DOMINANT
- 66 VERY DOMINANT
- 67 VERY DOMINANT
- 68 VERY DOMINANT
- 69 VERY DOMINANT
- 70 VERY DOMINANT
- 71 VERY DOMINANT
- 72 VERY DOMINANT
- 73 VERY DOMINANT
- 74 VERY DOMINANT
- 75 VERY DOMINANT
- 76 VERY DOMINANT
- 77 VERY DOMINANT
- 78 VERY DOMINANT
- 79 VERY DOMINANT
- 80 VERY DOMINANT
- 81 VERY DOMINANT
- 82 VERY DOMINANT
- 83 VERY DOMINANT
- 84 VERY DOMINANT
- 85 VERY DOMINANT
- 86 VERY DOMINANT
- 87 VERY DOMINANT
- 88 VERY DOMINANT
- 89 VERY DOMINANT
- 90 VERY DOMINANT
- 91 VERY DOMINANT
- 92 VERY DOMINANT
- 93 VERY DOMINANT
- 94 VERY DOMINANT
- 95 VERY DOMINANT
- 96 VERY DOMINANT
- 97 VERY DOMINANT
- 98 VERY DOMINANT
- 99 VERY DOMINANT
- 100 VERY DOMINANT

DEPTH, IN METERS

DEPTH, IN METERS



1285.0 SAMPLE 5
 1280.0 TIE 3
 1277.9 5
 1309.0 5
 1315.9 5
 1325.8 5
 1329.1 5
 1332.0 5
 1341.0 5
 1380.0 5
 1430.0 5
 1488.5 5
 1485.9 5
 1507.9 5
 1516.0 5
 1568.9 5
 1685.3 5
 1701.9 5
 1740.9 5
 1770.8 5
 1781.0 5
 1803.0 5
 1844.2 5
 1854.1 5
 1873.0 5
 1939.5 5
 1869.0 5
 2024.0 5
 2049.9 5
 2093.0 5
 2180.5 5
 2219.0 5
 2248.1 5
 2459.4 5
 2462.0 5
 2524.0 5
 2589.0 5
 2597.5 5
 2653.0 5
 2699.0 5
 2710.0 5
 2723.6 5
 2753.4 5
 2757.0 5
 2826.4 5
 2880.0 5

1285.0 TOTAL
 1280.0 YIELD
 1285.9
 1305.0
 1315.9
 1325.9
 1329.1
 1332.0
 1341.0
 1358.5
 1380.0
 1430.0
 1488.5
 1485.9
 1507.9
 1546.0
 1566.9
 1686.9
 1701.9
 1740.9
 1770.8
 1781.0
 1803.0
 1834.5
 1844.2
 1854.1
 1873.0
 1899.5
 1869.0
 2024.0
 2049.9
 2073.5
 2089.9
 2180.5
 2219.0
 2248.1
 2459.4
 2462.0
 2524.0
 2589.9
 2597.5
 2653.0
 2699.0
 2710.0
 2723.6
 2753.4
 2757.0
 2826.4
 2880.0