

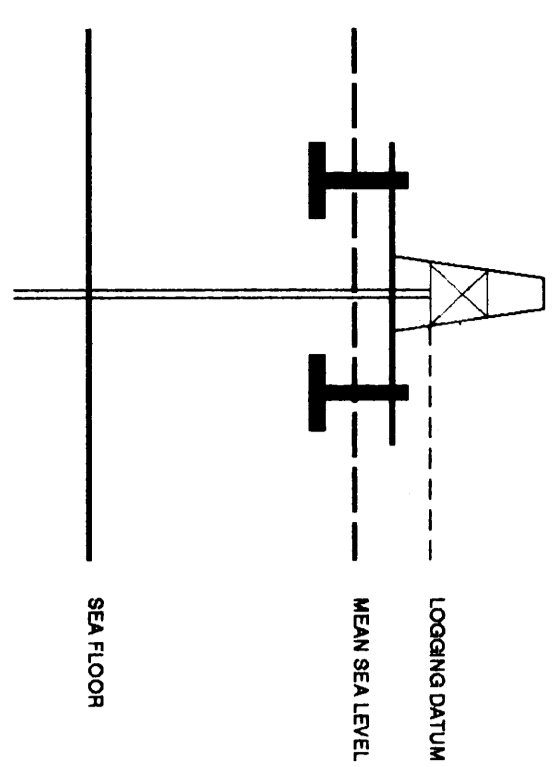


VERTICAL SEISMIC PROFILE

ZERO OFFSET VSP
NORMAL POLARITY 20 CM/SEC
VSP AND GEOGRAM COMPOSITE

PILOT 6

Company: ESSO AUSTRALIA LTD.
Well: ORANGE ROUGHY 1
Field: WILDCAT
Country: AUSTRALIA
Reference No: SYL591133591134
Date Logged: 27-JUN-1995
Location: 028 34 56.89' S
Elevations: KB: 25.00
Parameter Datum: MSL
Field Reference: P.M. LIBIANO
Completion: A. WISSANO
Date Processed: 21-JULY-1995
Depth Units: METRES
Elevation Above Mean Sea Level: 25.00
Seismic Reference Datum: 0.00



Total Number of Levels: 38
Depth Reference: SPD
Time Reference: SPD

Run	Date	Tool Type	Bit Size	Depth	Core Size	Depth	Top Depth	Bottom Depth
ONE	14-JUN-1995	AS-DL	17.8 M	12.28 M	12.28 M	82 M	793 M	2005 M
TWO	28-JUN-1995	DL-DL-43				74 M		
VSP	27-06-1995	50 M	50 M	5 M BELOW HSL	10 M BELOW HSL	248 010	248 010	248 010

The well name, location and borehole reference data were furnished by the customer.
All interpretations are opinions based on inferences from electrical or other measurements and we cannot, and do not guarantee the accuracy or correctness of any interpretations, and we shall not, except in the case of gross or willful negligence on our part, be liable or responsible for any loss, costs, damages or expenses incurred or sustained by anyone resulting from any interpretations made by any of our officers, agents or employees. These interpretations are also subject to Clause 4 of our General Terms and Conditions as set out in our current Price Schedule.

WAVESHAPING
WAVESHAPING DECONVOLUTION
ZERO PHASE (10-70 HZ)
-90 DEG PHASE SHIFT
ENHANCED UPDING WAVEFIELD
VERTICAL SCALE : 20 CM/SEC
POLARITY (S.E.C.) : NORMAL

CORRIDOR STACK
-90 DEG PHASE SHIFT

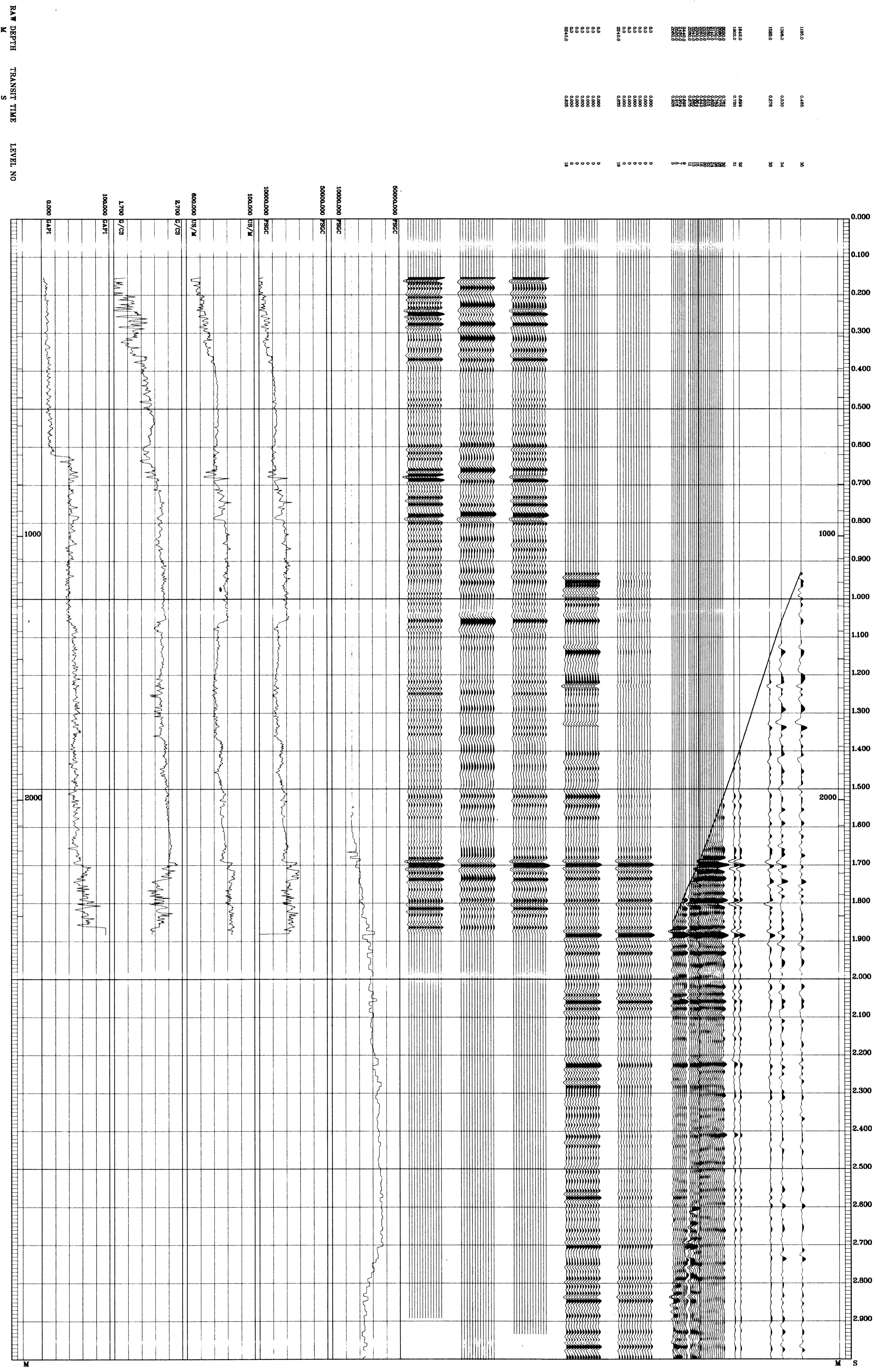
CORRIDOR STACK + AGC
-90 DEG PHASE SHIFT

GEOGRAM 35 HZ
ZERO PHASE - 90 DEG PHASE SHIFT

GEOGRAM 25 HZ
ZERO PHASE - 90 DEG PHASE SHIFT

GEOGRAM 4.5 HZ
ZERO PHASE - 90 DEG PHASE SHIFT

INVERTED IMPEDANCE
LOGGED IMPEDANCE
SONIC
DENSITY
GAMMA RAY



COMPANY ESSO AUSTRALIA LTD.
FIELD WILDCAT
WELL ORANGE ROUGHY 1
COUNTRY AUSTRALIA

