

LINE G7IA-497
SCALE RATIO: 2 81/1 AT 1.5 SEC



24 FOLD STACK
TVD 20-60 Hz 400 ms
15-55 Hz 600 ms
10-50 Hz 800 ms

4093 4094 4095 4111 4117 4123 4129 4135 4141 4147 4153 4159 4165 4171 4177 4181

850 STANDARD OIL (AMST) LTD.

AREA: GIPPSLAND BASIN
RECORDING PARAMETERS: LINE: G7IA-497
Source: A GUN SP 4091 to 4111
Array size: B 0 curin II gun, buried array
4 guns/SP Shot off group 48 No. of groups 48
Cable length (centre of gp. 1 to centre of gp. 48) 7108 ft
Offset (carry centre to centre of group 48) 3888 ft
Group interval 164 ft SP interval 666 ft
10 geophones/group Field polarity first break Negative
Recording system DCS III Filter 8 to 62 Hz
Recording length 5 sec Sample rate 4 ms

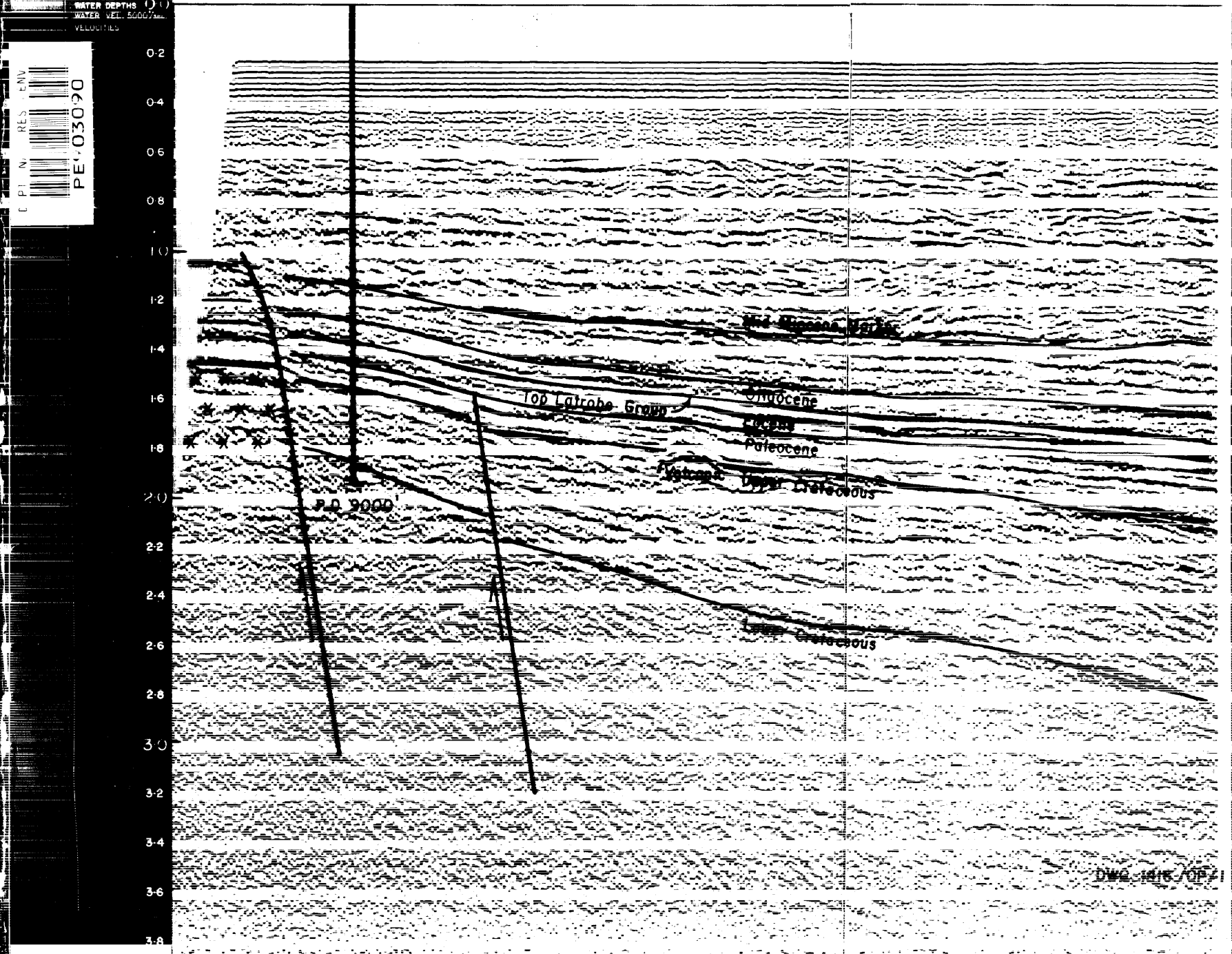
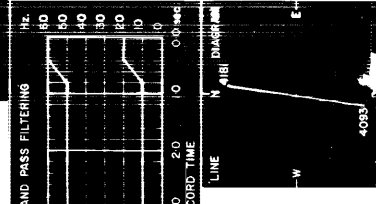
GEO PHYSICAL SERVICE INTERNATIONAL
DIGITAL PROCESSING CENTRE
SYDNEY, N.S.W., AUSTR.

YES NMO AR2 TVD DCN DFB TVD DCN DGF TVF \$500 PKG

PROCESSED DATA: Sample interval 4 ms
Group processed 24. Total 3500 ms
Tape B: 10 sec 0 to 3500 ms
Vertical stretch 1.0 EN
Deconvolution gain 65 ms 4 ms No. of traces/tracks 1
Display filter 2000 Hz Date 1/78
Deconvolution gain 1.0 EN No. of traces/tracks 12
Digital filter 500 Hz Date 1/78
Display filter 500 Hz No. of traces/tracks 0
Polarity displayed Positive / Negative
TIAC REQUEST 817
INPUT CREW PER BSI Date 1/78

WATER DEPTHS ()
WATER VEL. 5000 ft/sec
VELOCITY

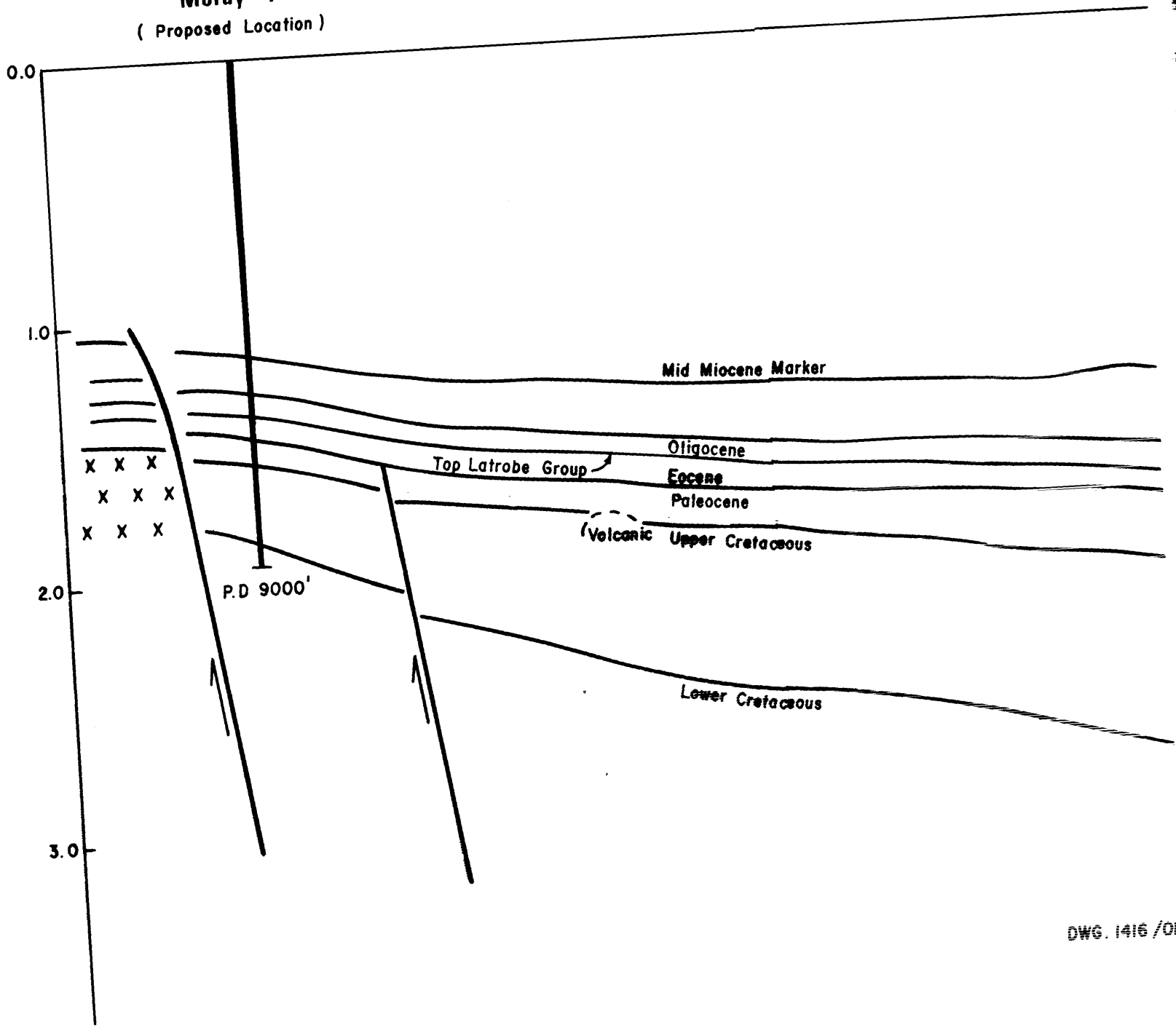
CPI N RES ENV
PEV03090



DWG 1016/OP-1

LINE G71A - 497
SCALE RATIO 2 1/2" = 1" SEC

Moray - 1 (Proposed Location)



24 FOLD STACK
TVE 20-60 Hz 400 ms
10-50 Hz 600 ms
10-50 Hz 800 ms

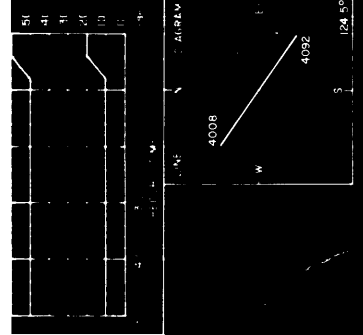
DWG. 1416 /OP/ 1



GEOPHYSICAL SERVICE INTERNATIONAL
DIGITAL PROCESSING CENTRE

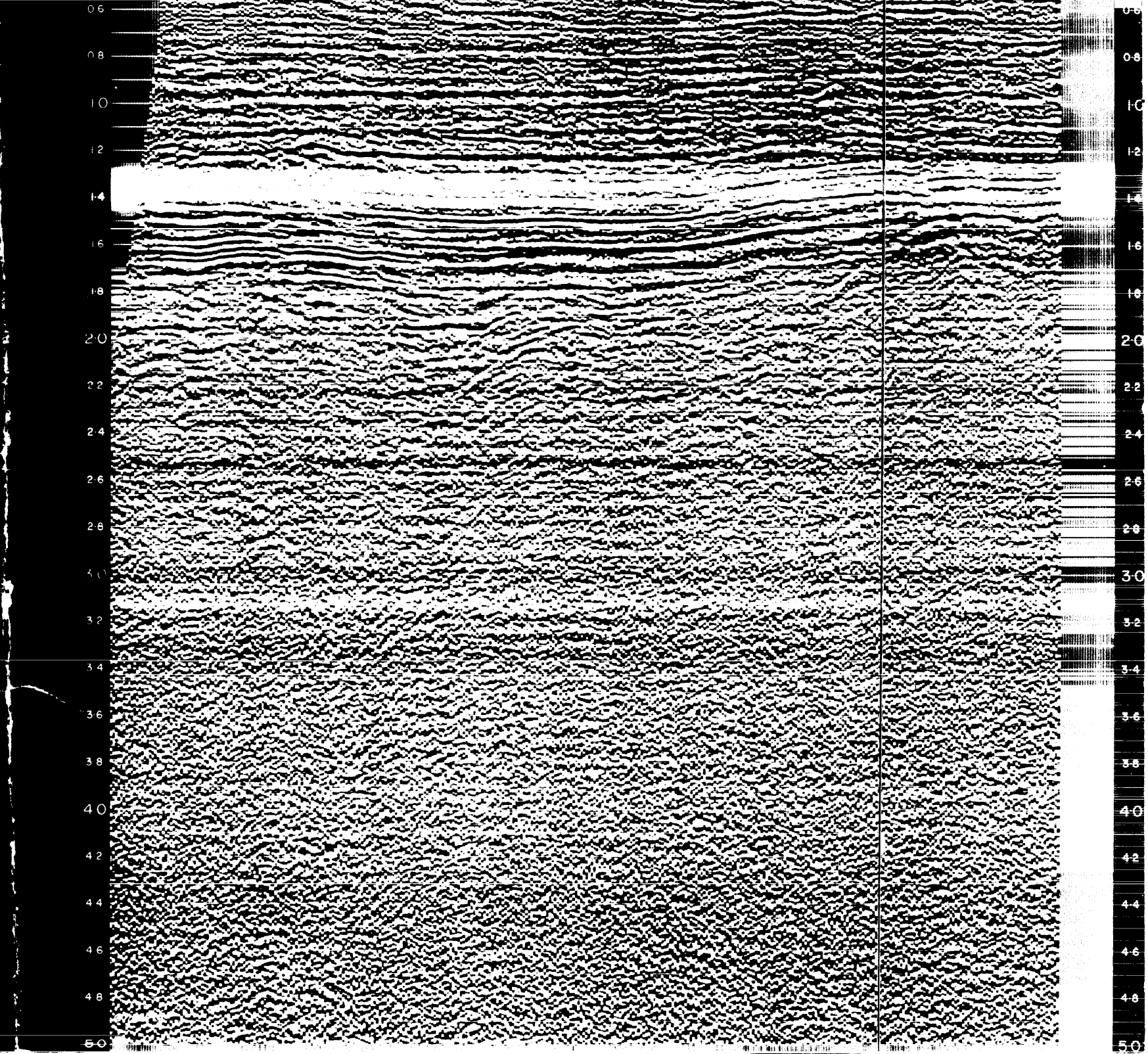


STANDARD OIL (AU)



1-48
 4
 0 3500
 ODD/EVEN
 DCN 66
 4
 5000
 TVD 64
 4
 4560
 360
 4
 27
 905
 5410
 APR 71

AREA GIPPSLAND BASIN
 RECORDING SOURCE AIRGUN
 ARRAY SIZE 860
 4
 cable length
 filter (arr) 164
 IO group DFS III
 recording length 5
 G.S.I. 909
 JAN



0.6
0.8
1.0
1.2
1.4
1.6
1.8
2.0
2.2
2.4
2.6
2.8
3.0
3.2
3.4
3.6
3.8
4.0
4.2
4.4
4.6
4.8
5.0