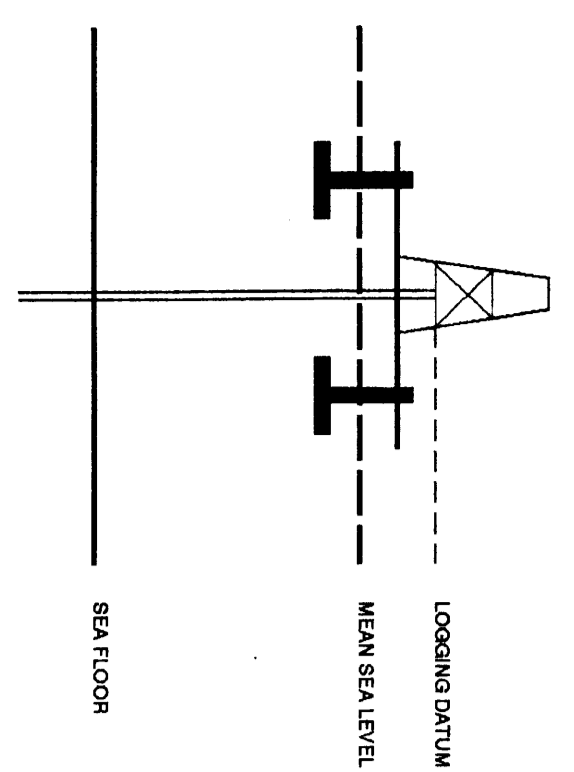


VERTICAL SEISMIC PROFILE

ZERO OFFSET VSP - CHECKSHOT SURVEY STACKED DATA



Company: ESSO AUSTRALIA LTD.
Well: MOONFISH-2
Field: MOONFISH
Country: AUSTRALIA
Reference No: SVJ261081 Interval: 2296.00 to 147.00
Date Logged: 19 JAN 1995 Date Processed: 08 JAN 1995
Location: 038 08 57.698° S 148 01 18.899° E
Elevations: KB: 30.90 DF: 30.90 GL: -53.90
Permanent Datum: MSL Depth Units: METRES
FIELD RECORDING: Engineer: RON JOHNSON Location: VLA Program Version: TOL427
CONVENTION: Height: A. WISCONSIN Core: SVJ Barcode: 205



Logging Datum: 30.80
Seismic Reference Datum: 0.00
Total Number of Levels: 11
Depth Reference: SRD

Run	Date	Tool	SRD	Change Size	Top	Bottom
ONE	21-12-94	AC-DR	177.8 IN	177.8 IN	141.0 M	825.0 M
TWO	16-01-95	DCI-DIR	12.28 IN	12.28 IN	795.0 M	2296.0 M
THREE	16-01-95	LOC-CON	12.28 IN	12.28 IN	147.0 M	2296.0 M
VSP	Date	Operator	Hydro	Duration	Type	Area
ONE	18-01-95	MOVING	MOVING	5.16 MIN BELOW MSL	SEISMIC	301.95 DEC 301.95 DEC

The well name, location and borehole reference data were furnished by the customer.

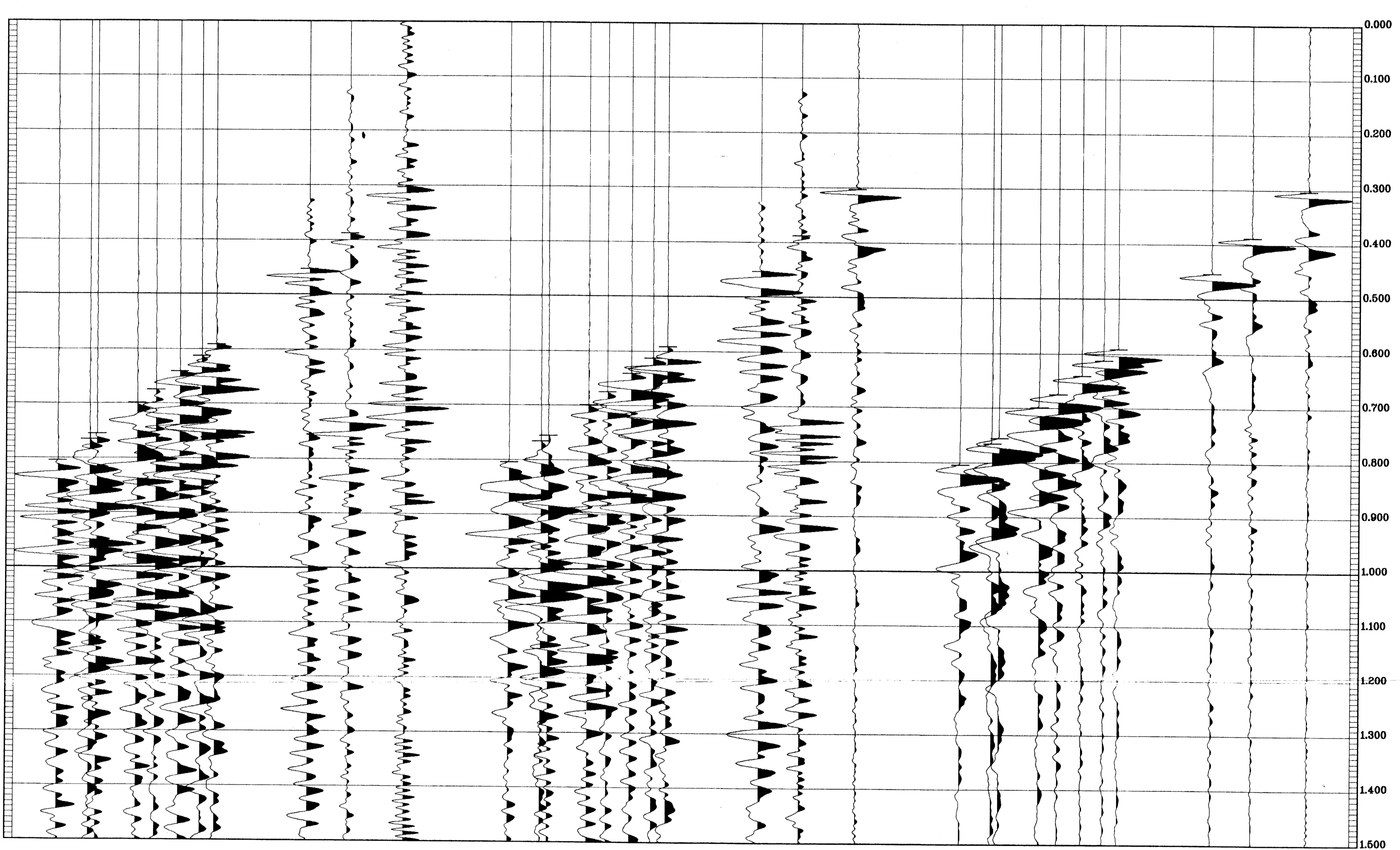
All interpretations are opinions based on inferences from electrical and other measurements and we cannot, and do not guarantee the accuracy or correctness of any interpretations, and we shall not, except in the case of gross or willful negligence on our part, be liable or responsible for any loss, costs, damages or expenses incurred or sustained by anyone resulting from any interpretations made by any of our officers, agents or employees. These interpretations are also subject to Clause 4 of our General Terms and Conditions as set out in our current Price Schedule.

**** MEDIAN STACK ****
(DOWNHOLE DATA)
MEDIAN COHERENCY STACK OF THE DOWNHOLE VERTICAL COMPONENT
PROCESSING SEQUENCE:
MEDIAN STACK APPLIED
BANDPASS FILTER : 4 - 120 HZ
VERTICAL SCALE : 20 CM/SEC
POLARITY (S.E.G.) : REVERSE
TIMES REFERENCED TO HYDROPHONE

**** MEDIAN STACK ****
(DOWNHOLE DATA)
MEDIAN COHERENCY STACK OF THE DOWNHOLE 2. HORIZONTAL COMPONENT
PROCESSING SEQUENCE:
MEDIAN STACK APPLIED
BANDPASS FILTER : 4 - 120 HZ
VERTICAL SCALE : 20 CM/SEC
POLARITY (S.E.G.) : REVERSE
TIMES REFERENCED TO HYDROPHONE

**** MEDIAN STACK ****
(DOWNHOLE DATA)
MEDIAN COHERENCY STACK OF THE DOWNHOLE 1. HORIZONTAL COMPONENT
PROCESSING SEQUENCE:
MEDIAN STACK APPLIED
BANDPASS FILTER : 4 - 120 HZ
VERTICAL SCALE : 20 CM/SEC
POLARITY (S.E.G.) : REVERSE
TIMES REFERENCED TO HYDROPHONE

RAW DEPTH	TRUE VERTICAL DEPTH	MSL	SOURCE OFFSET	TRANSIT TIME	LEVEL NO	MAX AMPLITUDE	MIN AMPLITUDE
700.0	668.2		4.0	0.201	11	124.674	-107.805
900.0	868.0		9.0	0.290	10	106.377	-120.142
1100.0	1067.8		15.0	0.414	9	107.027	-88.214
1300.0	1267.6		22.0	0.561	8	62.141	-10.846
1500.0	1467.4		30.0	0.736	7	56.778	-27.285
1700.0	1667.2		38.0	0.941	6	62.771	-48.834
1900.0	1867.0		46.0	1.175	5	54.853	-24.443
2100.0	2066.8		54.0	1.439	4	50.179	-18.941
2300.0	2266.6		62.0	1.734	3	28.112	-14.208
2500.0	2466.4		70.0	2.050	2	28.112	-12.173
2700.0	2666.2		78.0	2.396	1	22.027	-10.807
2900.0	2866.0		86.0	2.772			
3100.0	3065.8		94.0	3.178			
3300.0	3265.6		102.0	3.614			
3500.0	3465.4		110.0	4.080			
3700.0	3665.2		118.0	4.576			
3900.0	3865.0		126.0	5.102			
4100.0	4064.8		134.0	5.658			
4300.0	4264.6		142.0	6.244			
4500.0	4464.4		150.0	6.860			
4700.0	4664.2		158.0	7.506			
4900.0	4864.0		166.0	8.182			
5100.0	5063.8		174.0	8.888			
5300.0	5263.6		182.0	9.624			
5500.0	5463.4		190.0	10.390			
5700.0	5663.2		198.0	11.186			
5900.0	5863.0		206.0	12.012			
6100.0	6062.8		214.0	12.868			
6300.0	6262.6		222.0	13.754			
6500.0	6462.4		230.0	14.670			
6700.0	6662.2		238.0	15.616			
6900.0	6862.0		246.0	16.592			
7100.0	7061.8		254.0	17.598			
7300.0	7261.6		262.0	18.634			
7500.0	7461.4		270.0	19.690			
7700.0	7661.2		278.0	20.766			
7900.0	7861.0		286.0	21.872			
8100.0	8060.8		294.0	23.008			
8300.0	8260.6		302.0	24.174			
8500.0	8460.4		310.0	25.370			
8700.0	8660.2		318.0	26.596			
8900.0	8860.0		326.0	27.852			
9100.0	9059.8		334.0	29.138			
9300.0	9259.6		342.0	30.454			
9500.0	9459.4		350.0	31.800			
9700.0	9659.2		358.0	33.176			
9900.0	9859.0		366.0	34.582			
10100.0	10058.8		374.0	36.018			
10300.0	10258.6		382.0	37.484			
10500.0	10458.4		390.0	38.980			
10700.0	10658.2		398.0	40.506			
10900.0	10858.0		406.0	42.062			
11100.0	11057.8		414.0	43.648			
11300.0	11257.6		422.0	45.264			
11500.0	11457.4		430.0	46.910			
11700.0	11657.2		438.0	48.586			
11900.0	11857.0		446.0	50.292			
12100.0	12056.8		454.0	52.028			
12300.0	12256.6		462.0	53.794			
12500.0	12456.4		470.0	55.590			
12700.0	12656.2		478.0	57.416			
12900.0	12856.0		486.0	59.272			
13100.0	13055.8		494.0	61.158			
13300.0	13255.6		502.0	63.074			
13500.0	13455.4		510.0	65.020			
13700.0	13655.2		518.0	67.006			
13900.0	13855.0		526.0	69.022			
14100.0	14054.8		534.0	71.068			
14300.0	14254.6		542.0	73.144			
14500.0	14454.4		550.0	75.240			
14700.0	14654.2		558.0	77.366			
14900.0	14854.0		566.0	79.522			
15100.0	15053.8		574.0	81.708			
15300.0	15253.6		582.0	83.924			
15500.0	15453.4		590.0	86.170			



COMPANY ESSO AUSTRALIA LTD.
FIELD MOONFISH
WELL MOONFISH-2
COUNTRY AUSTRALIA

