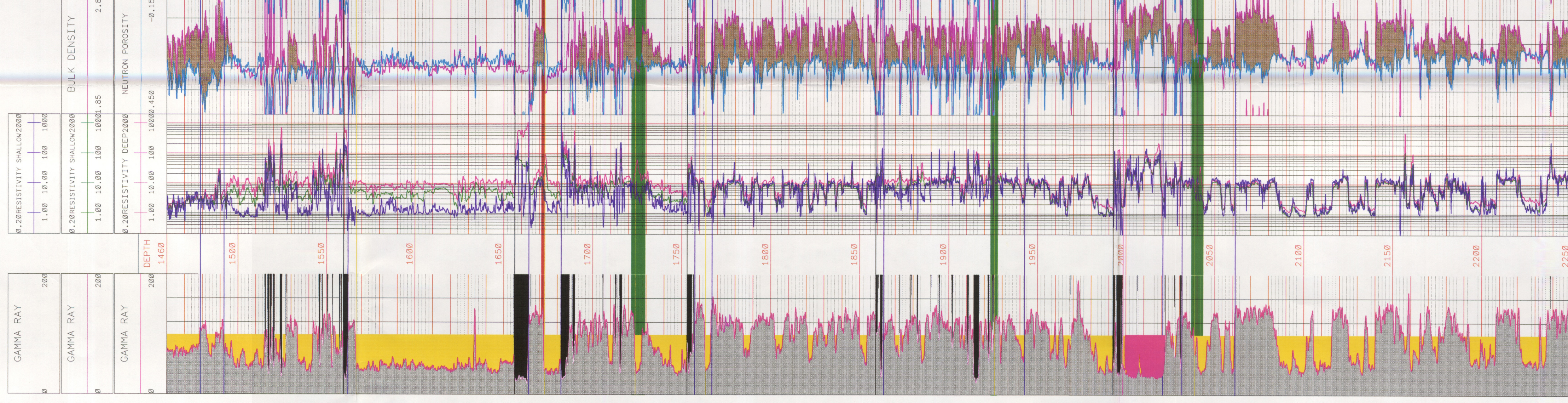


MOONFISH_1-ST1

KB = 23.0m

TVD.SS



MOONFISH_1

KB = 23.0m

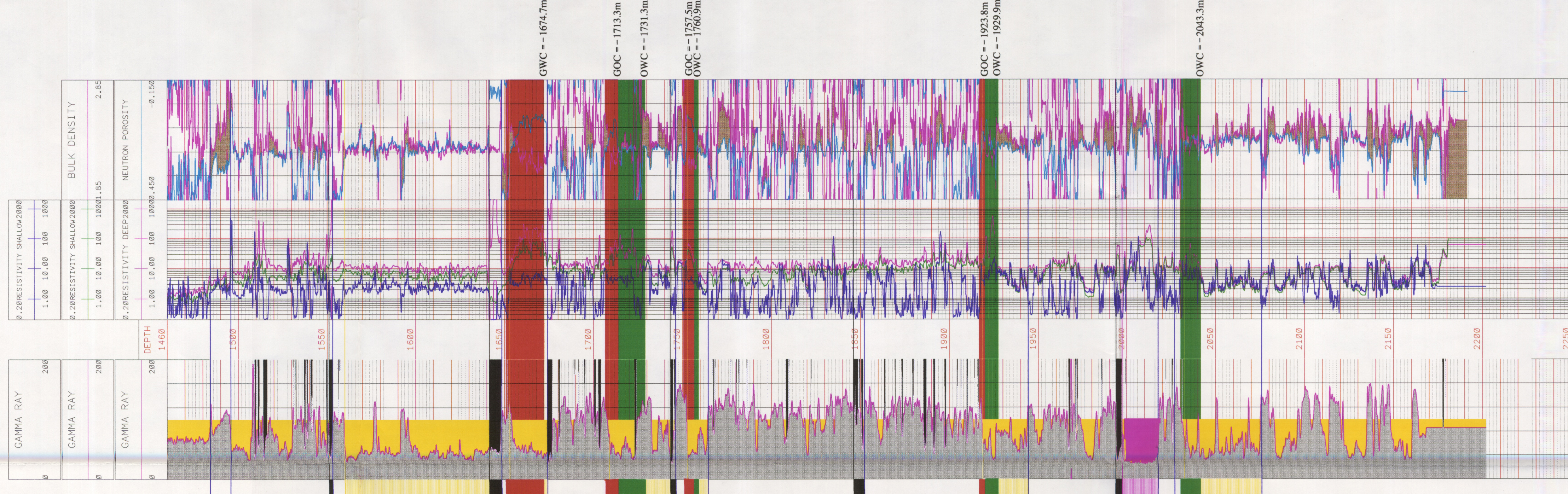
TVD.SS



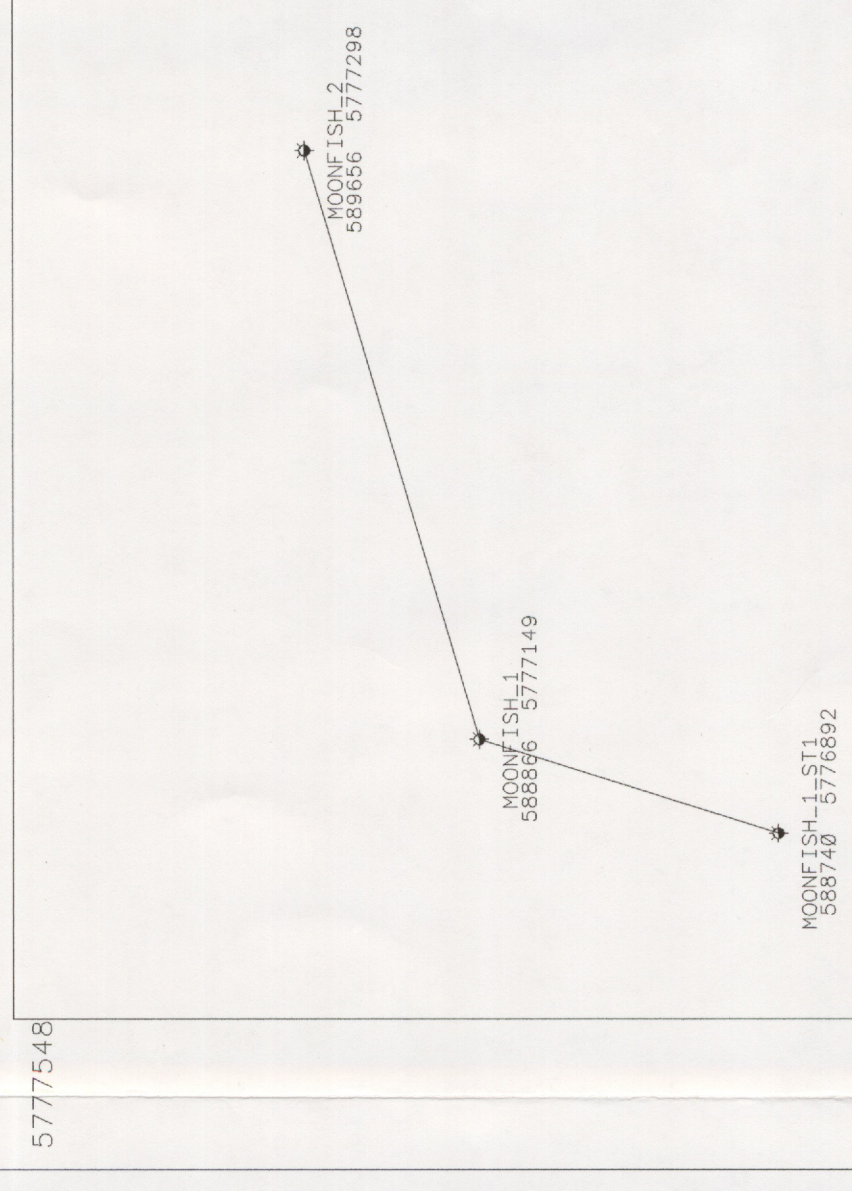
MOONFISH_2

KB = 30.0m

TVD.SS



LOCALITY MAP



LEGEND

- SHOW OR STAIN
- INTERPRETED OIL PROD.
- HYDROCARBON OUT
- FLUORESCENCE
- GAS SHOW
- OIL PRODUCTION
- GAS PRODUCTION
- INTERPRETED COND. PROD.
- DST WITH GAS RECOVERED
- DST WITH OIL RECOVERED
- CORE WITH CORE PERFORATION LOG ANALYSIS ANALYSIS WITH NET PAY
- DST BIT RUN PLUG
- SUC WITH RECOVERY
- SUC WITHOUT RECOVERY
- FIT
- RFT PRETEST
- RFT SAMPLE

13.7%

CASING

RID

PACKER

BRIDGE PLUG

LITHOLOGIC SYMBOLS

- Claystone
- Amberlite
- Mudstone
- Silt
- Sand
- Basement
- Limestone
- Micr. Limestone
- Gran. Limestone
- Shal. Limestone
- Marl
- Volcanics
- Dolomite
- Grenule
- Oolites
- Dolomitic
- Lithic or rock fragments
- Pyrite
- Chert
- Limestone
- Micr. Limestone
- Gran. Limestone
- Shal. Limestone
- Marl
- Volcanics
- Dolomite
- Brachiopods
- Gastropods
- Cephalopods
- Pelecypods
- Echinoids
- Fish remains
- Colporeous
- Plant remains
- Spores
- Leaves
- Foram
- Micr.
- Dolomite

ESSO AUSTRALIA LIMITED

MOONFISH FIELD

STRUCTURAL CROSS SECTION (mTVD.SS)

VERTICAL SCALE 1:1500

HORIZONTAL SCALE 1:2000

AUTHOR : mefitto

DRAFTED BY : meglibe

DATE : 7 SEP 1995

PROGRAM : SOLAR/SCOPE

RELEASE : SOLAR SIS.0

Enclosure 1