



GEOPHYSICAL SERVICE INTERNATIONAL
CENTRAL PROCESSING CENTRE



AUSTRALIA LIMITED

514
496

GIPPSLAND BASIN

G71B 413 48
7768
= 958
658
Negative

Air Gun 1300 23 48

164
DFS III
50

Nov 1971

1 4
2 3 4
5 6 30
7

GSI

909

4
24
0
4000
2
-80
2
0

7

6469

Jan. 1972

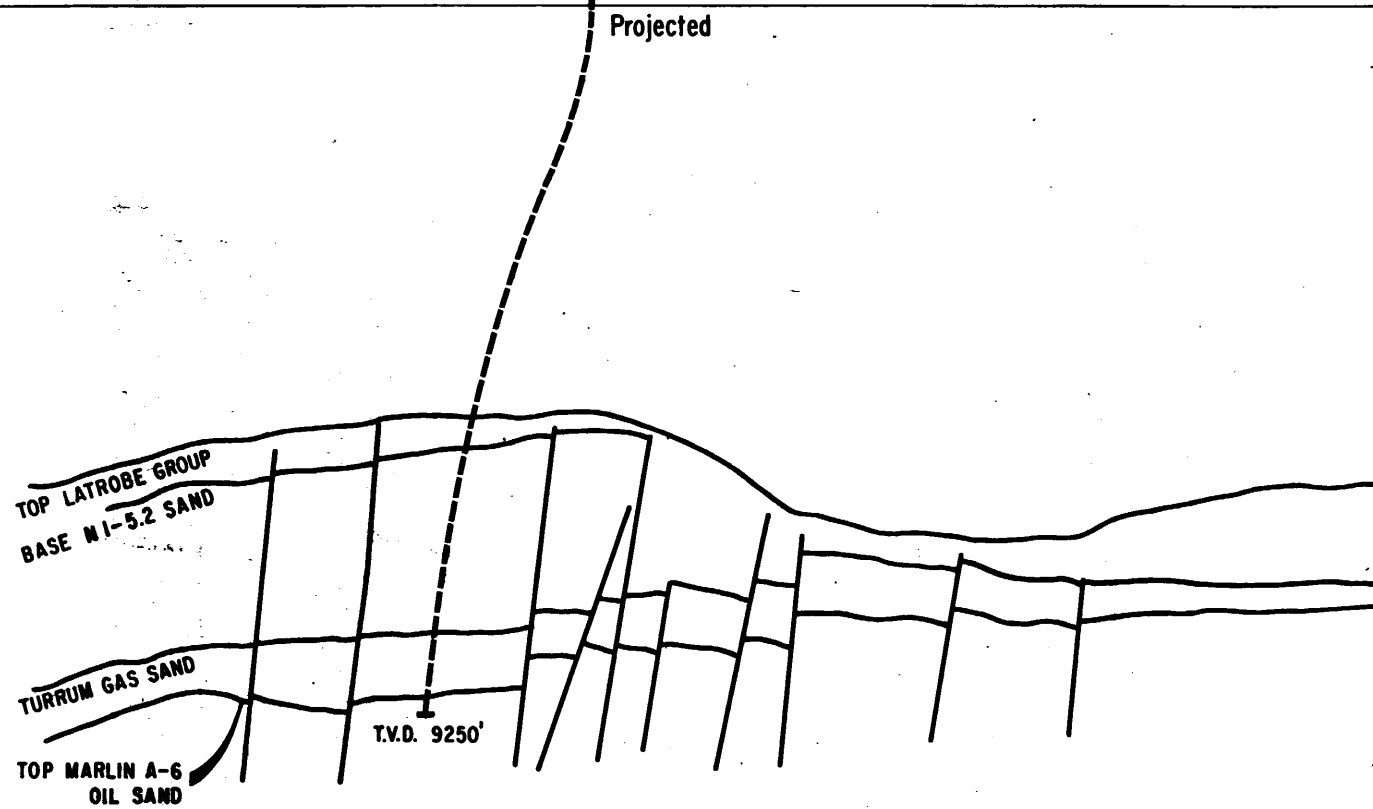
1 48
4
-18 Odd/Even
TVD 48
2200
TVD 64
300
4500

35

275

514
LINE G71B - 514

(Proposed A-24)





GEOPHYSICAL SERVICE INTERNATIONAL
DIGITAL PROCESSING CENTRE
SYDNEY, NSW, AUSTRALIA

ESSO AUSTRALIA LIMITED

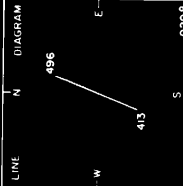
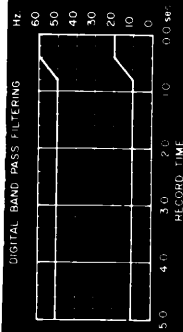
PROCESSING DATA

Groups processed 1 - 48
Vertical stack Odd / Even
Design before stack TVD 48 pits, 4 ms No. of gates/trace 2
Design gate (trace) 2200 to 5000 ms Gate shift -80 ms/trace
Design after stack TVD 64 pits, 4 ms No. of gates/trace 2
Design gate (trace) 300 to 4500 ms Gate shift 0 ms/trace
Digital filter 35 pits, 4 ms
Displayed digital AGC Playback gain 7 db
Polarity displayed Positive Negative
TIAC REQUEST 275 field tape 6469
INPUT CREW PARTY 107-ES0-2 Date Jan. 1972

VES 1
NMO 4
AR2 2
TVD 3
DCN 5
UPS 6
TVD 7
DCN 7
UGF 7
TVF 7
700 8x4

AREA GIPPSLAND BASIN
RECORDING PROGRAM TEPS
Source Air Gun LINE G7IB-514
Array size 300 Gun 23 Guns lined array
4 pops/Sp. Shot off group 48 No. of groups
Cable length (centre of gp 1 to centre of gp 48) 7708 ft
Offset (array centre to centre of group 48) ± 958 ft
Group interval 164 ft SP interval 656 ft
30 geophones/group Field polarity first break Negative
Recording system DFS III Filter 8 to 62 Hz
Recording length 50 sec Sample rate 4 ms

G.S.I. Field crew 909 Date Nov. 1971



LINE G7IB-514

SCALE RATIO = 2 BI/AT 1:5 SEC

G7IB-502 EX67-106
ET 66-66 G63-II

G7IB-503
EX67-103

EG64-38 EM68 227 M 44x, E564-47

EX67-104
G69A-246 G7IB-504 G7IB-505

EX67-05 TURRUM-1, TC10029 ET66-62
G69A-245 G7IA-463 G7IB-508

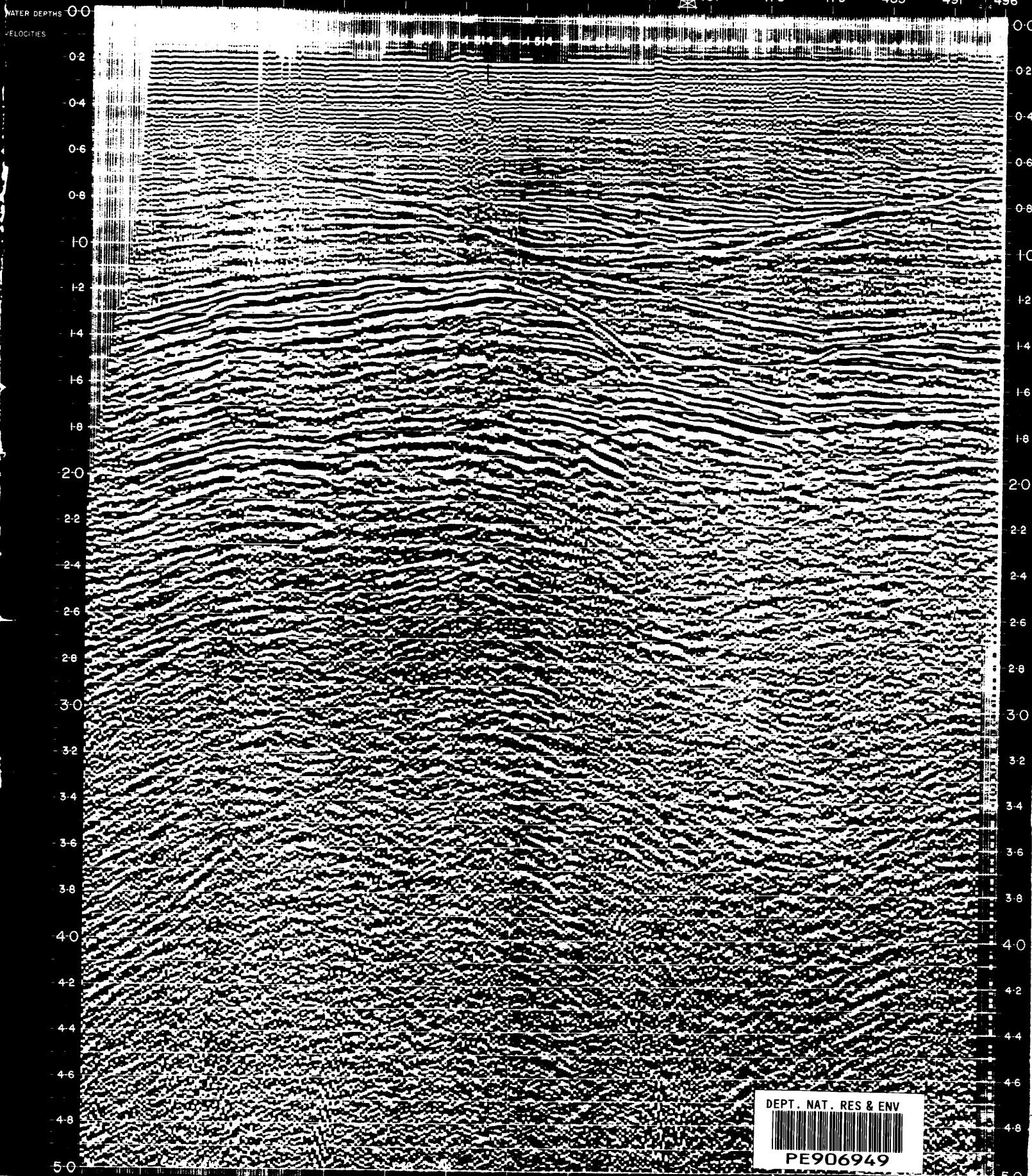
G7IB-508A
G7IB-508 G63-21

G7IB-50
G7IB-509

BEFORE STACK
24 FOLD STACK / TVD
TVF 20 - 50 Hz 400ms
15 - 55 Hz 600ms
10 - 50 Hz 800ms
EG64-23

G7IB-511

413 419 425 431 437 443 449 455 461 467 473 479 485 491 496



DEPT. NAT. RES & ENV



PE906949



GEOPHYSICAL SERVICE INTERNATIONAL
DIGITAL PROCESSING CENTRE
STONEY NSW, AUSTR

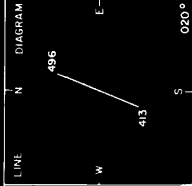
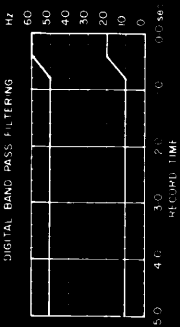
AUSTRALIA LIMITED



ARE A. GIPPSLAND BASIN LINE **G7IB-514**
RECORDING INSTRUMENTS SP **413** to **496**
Source **Air Gun**
Array size **1300** ft. **23** sps. linear array
4 pops/Sp. Sp. gr. group **48** ft. of groups **48**
Cable length (centre of sp. 1 to centre of sp. 48) **7708** ft.
Offset array, centre to centre of group **48** = **958** ft.
Group interval **164** ft. SP interval **656** ft.
30 geophones/group Field polarity first break **Negative**
Recording system **DFS III** Time **8** to **62** hr.
Recording length **50** sec. Sample rate **4** ms

G.S.I. Field no. **909** Date **Nov. 1971**

PROCESSED DATA Sample period **4** ms
Groups processed **24** fold
TAP B = **18** db. 4 30/sec Gate **0** to **4000** ms
Vertical stack **Odd/Even**
Decom before stack **TVD** **48** pts. **4** ms No. of gates/trace **2**
Design gate (trace 1) **2200** to **5000** ms Gate shift **-80** ms/trace
Decom after stack **TVD** **64** pts. **4** ms No. of gates/trace **2**
Design gate (trace 1) **300** to **4500** ms Gate shift **0** ms/trace
Digital filter **35** pts. **4** ms
Digital filter **35** pts. **4** ms
Display digital AGC playback gain **7** db
Polarity displayed Positive Negative
TAC REQUEST **275** Field type **6469**
NPJT CREW PARTY 107-ES0-2 Date **Jan. 1972**



LINE **G7IB-514**

SCALE RATIO = 2 BI/AT 1.5 SEC

G7E-102, EX 37, 06 G7IB-503
ET 66-66 G63-11 EX 67-103

EG64-38, EM68-227 M-44BX, EG64-47

EX 67-04

EX 67-105 TURRUM-1, TD 10029

ET 66-62 G7IB-508A

G7IB-510

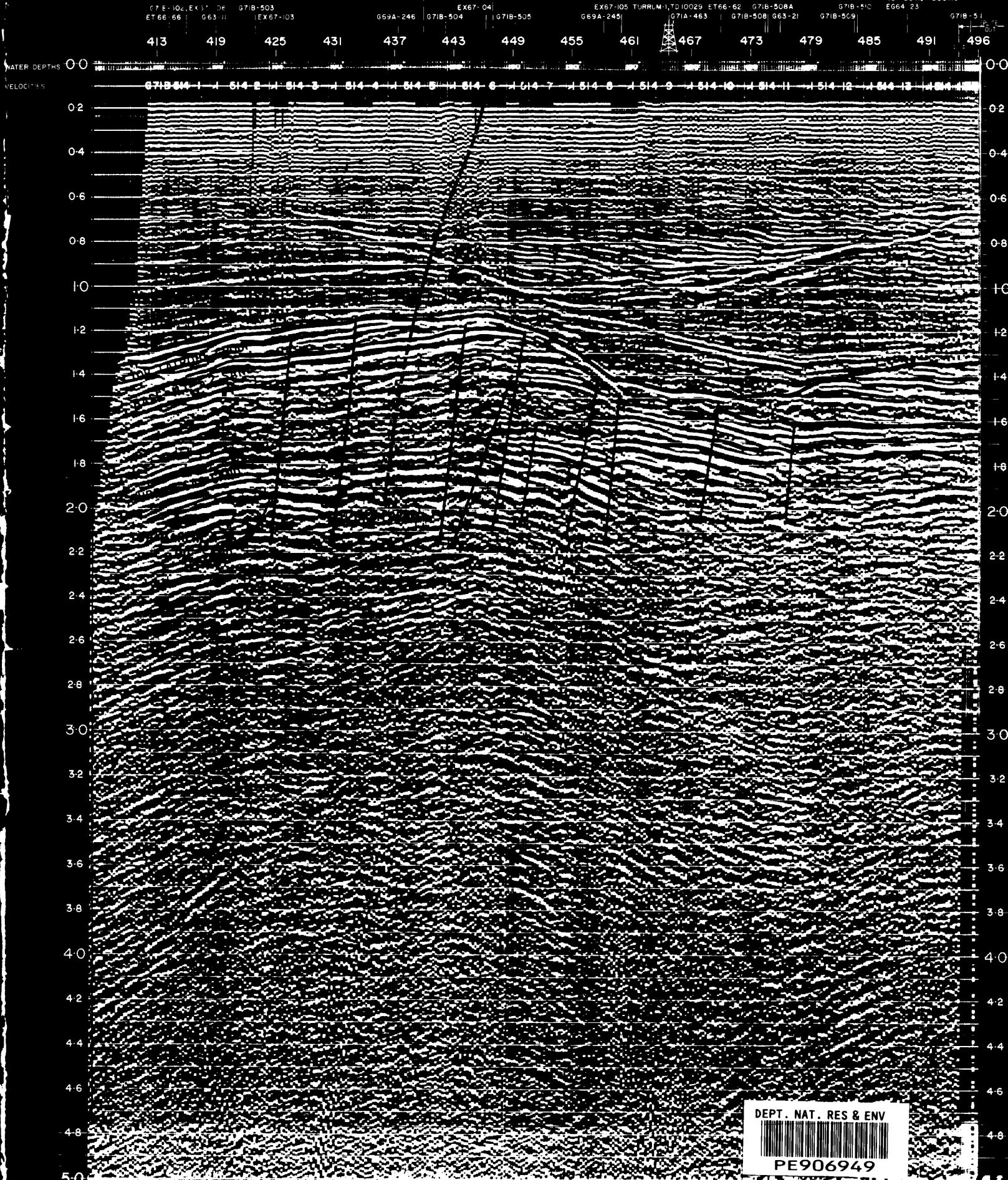
G7IB-510

E664-23

G7IB-511

NE

TVD BEFORE STACK
24 FOLD STACK / TVD
TVF 20-60 Hz 800ms
15-55 Hz 800ms
10-30 Hz 800ms



DEPT. NAT. RES & ENV



PE906949