

# WELL SITE ROCK LOG

DEPT. NAT. RES & ENV  
PE604031

BASIN **GIPPSLAND**

WELL **MARLIN A-24**

LOCATION **Lat. 38° 13' 16" S. — Long. 148° 13' 10" E.**

ELEVATION **GRD. K.B.** LOGGED BY \_\_\_\_\_ INTERVAL \_\_\_\_\_ DATE \_\_\_\_\_

STATUS \_\_\_\_\_ TOTAL DEPTH **M.D. T.V.D.** \_\_\_\_\_

SPUD DATE \_\_\_\_\_ RIG MOVE DATE \_\_\_\_\_

COMMENTS \_\_\_\_\_

WELL LOCATION Lat. 38° 13' 16" S. — Long. 148° 13' 10" E.  
MARLIN A-24

### LITHOLOGIC SYMBOLS

- |          |                          |          |                       |          |                      |          |                                |
|----------|--------------------------|----------|-----------------------|----------|----------------------|----------|--------------------------------|
| [Symbol] | CLAYSTONE                | [Symbol] | SHALE                 | [Symbol] | MUDSTONE             | [Symbol] | SILTSTONE                      |
| [Symbol] | SANDSTONE                | [Symbol] | LIMESTONE             | [Symbol] | LIMESTONE (MICRITIC) | [Symbol] | LIMESTONE (GRAULAR)            |
| [Symbol] | LIMESTONE (SKELETAL)     | [Symbol] | DOLOMITE              | [Symbol] | MARL                 | [Symbol] | GRANULE, BOULDER, CONGLOMERATE |
| [Symbol] | COAL                     | [Symbol] | VOLCANICS             | [Symbol] | IGNEOUS              | [Symbol] | NO SAMPLE                      |
| [Symbol] | LITHIC OR ROCK FRAGMENTS | [Symbol] | CALCAREOUS            | [Symbol] | DOLOMITIC            | [Symbol] | SIDERITIC                      |
| [Symbol] | GLAUCONITIC              | [Symbol] | PYRITIC               | [Symbol] | MICACEOUS            | [Symbol] | CARBONACEOUS                   |
| [Symbol] | CHERT                    | [Symbol] | QUARTZ                | [Symbol] | FELDSPAR             | [Symbol] | OOLITES                        |
| [Symbol] | LUMPS AND AGGREGATES     | [Symbol] | LEAVES                | [Symbol] | ALGAE                | [Symbol] | CORAL                          |
| [Symbol] | BRACHIOPODS              | [Symbol] | GASTROPODS            | [Symbol] | CEPHALOPODS          | [Symbol] | PELECYPODS                     |
| [Symbol] | ECHINIODS                | [Symbol] | FORAMS                | [Symbol] | SPICULES             | [Symbol] | BRYZOANS                       |
| [Symbol] | CRINOIDS                 | [Symbol] | STROMATOPORIODS       | [Symbol] | FISH REMAINS         | [Symbol] | PLANT REMAINS                  |
| [Symbol] | SPORES                   | [Symbol] | FOSSILS, MICROFOSSILS | [Symbol] |                      | [Symbol] |                                |

FORMATION TOPS \_\_\_\_\_

PERCENTAGE LITHOLOGY \_\_\_\_\_

DRILLING TIME CURVE \_\_\_\_\_

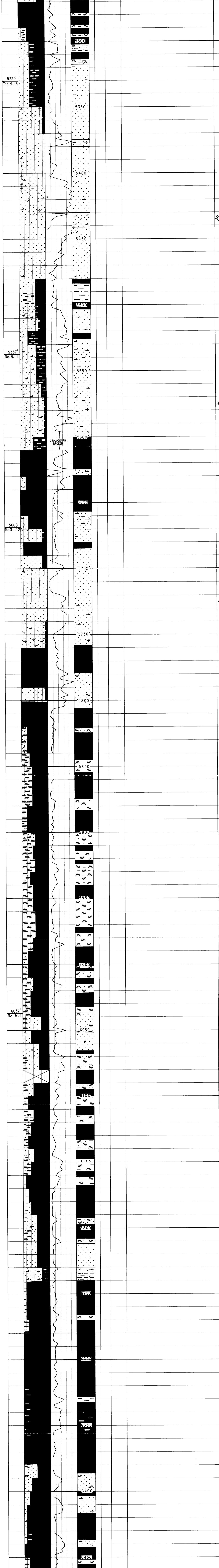
INTERPRETED LITHOLOGY AND DEPTH \_\_\_\_\_

PERCENTAGE IN SAMPLE \_\_\_\_\_

ROCK NAME \_\_\_\_\_

DESCRIPTION \_\_\_\_\_

SHOES \_\_\_\_\_



T.D. 6460 (-6370)

LOGGED BY : A. SVALBE  
DATE : JUNE, 1973