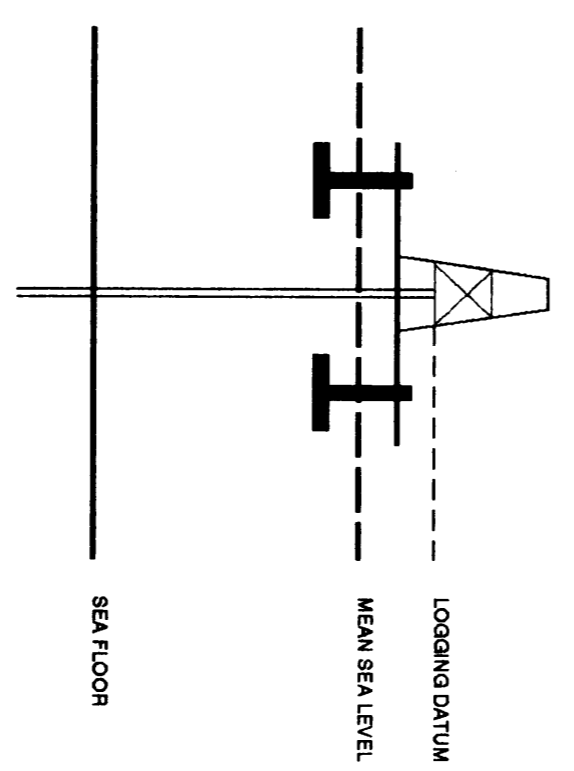


# SEISMIC CALIBRATION LOG

(Adjusted Continuous Velocity Log)



Company: ESSO AUSTRALIA LTD  
 Well: KINGFISH 8  
 Field: KINGFISH  
 Country: AUSTRALIA  
 Reference No: 560775 Interval: 2405.00 to 225.00  
 Date Logged: 24-03-92 Date Processed: 2-4-92  
 Location: 38 35' 36" S 148 03' 27" E  
 Elevations: KB: 23.00 DF: 22.70 GL: -76.00  
 Permanent Datum: MSL Depth Units: METRES  
 FIELD RECORDING: Engineer: M. HELMIG Location: Program Version: 32.4  
 COMPUTATION: Analyst: T. BOWMAN Core: SVU Baseline: 20.0  
 ELEVATION ABOVE MEAN SEA LEVEL  
 Logging Datum: 23.00  
 Seismic Reference Datum: 0.00

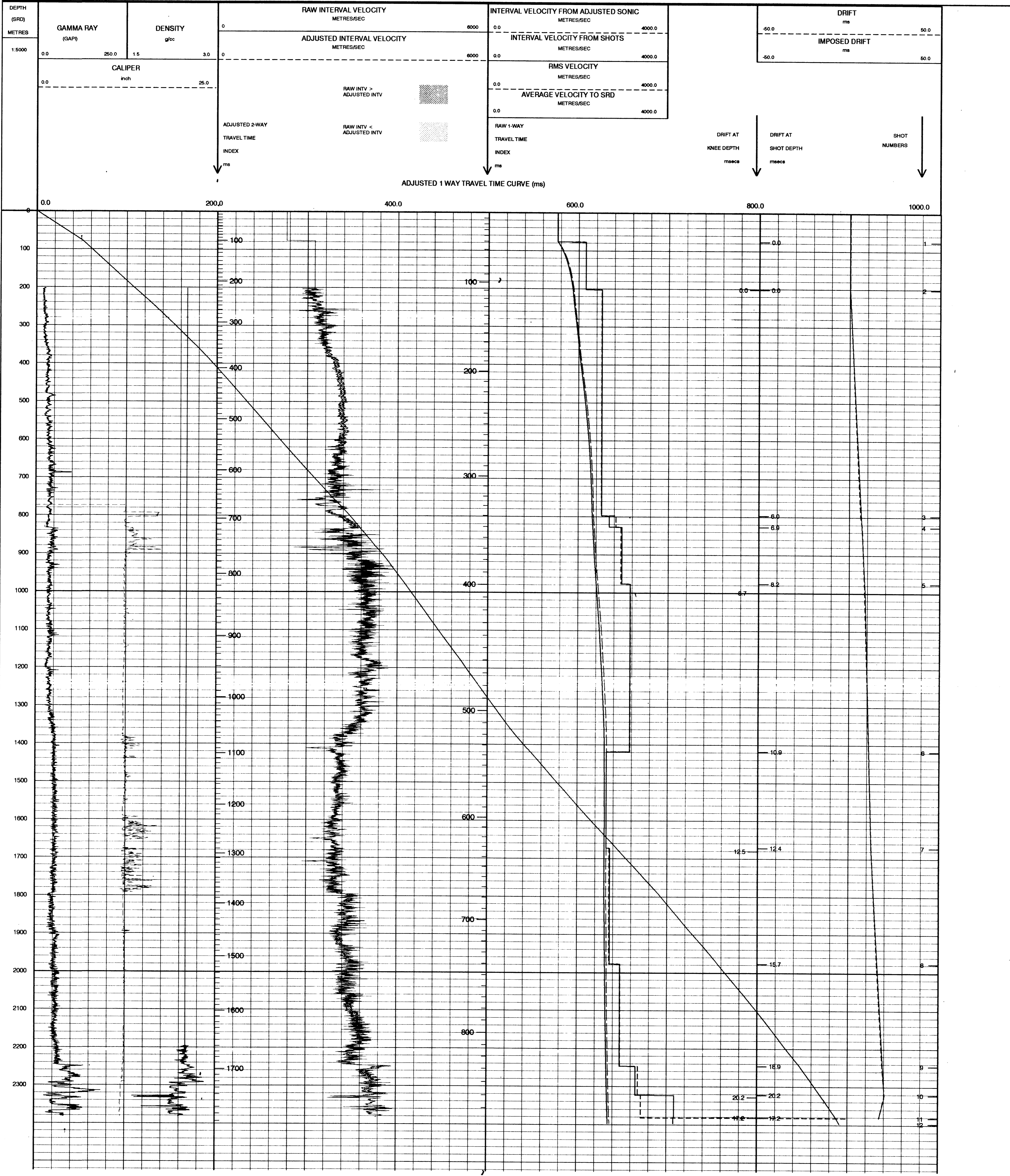


Total Number of Levels: 8  
 Depth Reference: SRD  
 Time Reference: SRD

Run	Date	Tool Type	SRD	SRD	SRD	SRD	SRD	SRD	SRD
1	13-03-92	AS							
2	24-03-92	SBT							

FOLD HERE The well name, location and borehole reference data were furnished by the customer.

All interpretations are opinions based on inferences from electrical or other measurements and we cannot, and do not guarantee the accuracy or correctness of any interpretations, and we shall not, except in the case of gross or willful negligence on our part, be liable or responsible for any loss, costs, damages or expenses incurred or sustained by anyone resulting from any interpretations made by any of our officers, agents or employees. These interpretations are also subject to Clause 4 of our General Terms and Conditions as set out in our current Price Schedule.



COMPANY ESSO AUSTRALIA LTD  
 FIELD KINGFISH  
 WELL KINGFISH #8  
 COUNTRY AUSTRALIA

