

ONE WAY TIME BELOW SEA LEVEL - SECONDS

TWO WAY TIME BELOW SEA LEVEL - SECONDS

ESSO EXPLORATION AND PRODUCTION AUSTRALIA INC.

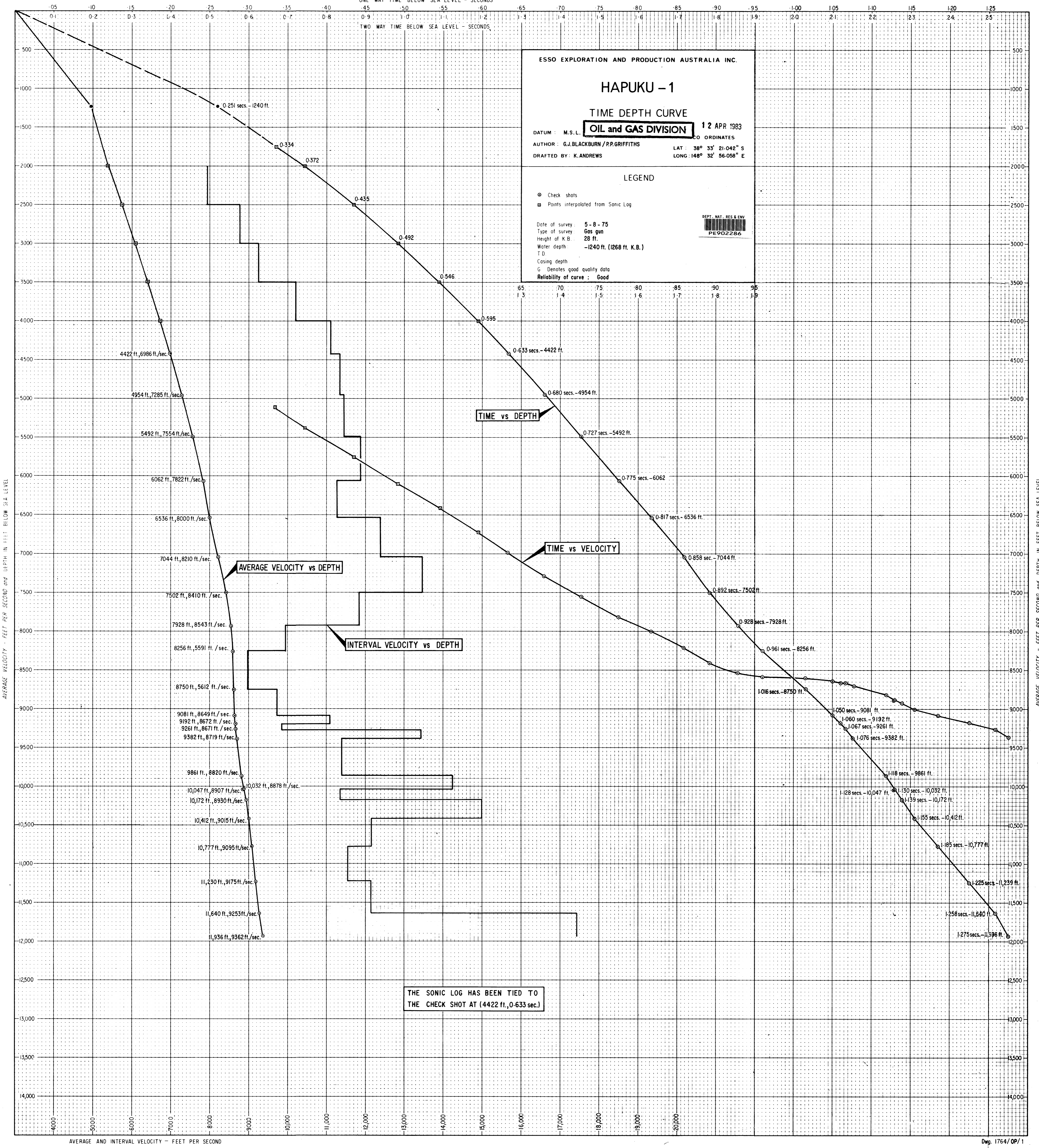
# HAPUKU - 1

## TIME DEPTH CURVE

DATUM : M.S.L. **OIL and GAS DIVISION** 12 APR 1983  
 AUTHOR : G.J.BLACKBURN / P.P.GRIFFITHS CO ORDINATES  
 DRAFTED BY : K.ANDREWS LAT : 38° 35' 21.042" S  
 LONG : 148° 32' 56.058" E

### LEGEND

- Check shots
  - Points interpolated from Sonic Log
- Date of survey : 5 - 8 - 75  
 Type of survey : Gas gun  
 Height of K.B. : 28 ft.  
 Water depth : -1240 ft. (1268 ft. K.B.)  
 T.D.  
 Casing depth  
 G Denotes good quality data  
 Reliability of curve : Good



TIME vs DEPTH

TIME vs VELOCITY

AVERAGE VELOCITY vs DEPTH

INTERVAL VELOCITY vs DEPTH

THE SONIC LOG HAS BEEN TIED TO THE CHECK SHOT AT (4422 ft., 0.633 sec.)

AVERAGE AND INTERVAL VELOCITY - FEET PER SECOND

Dwg. 1764/OP/1