

9/288

DEPT. NAT. RES. & ENV. PE905932

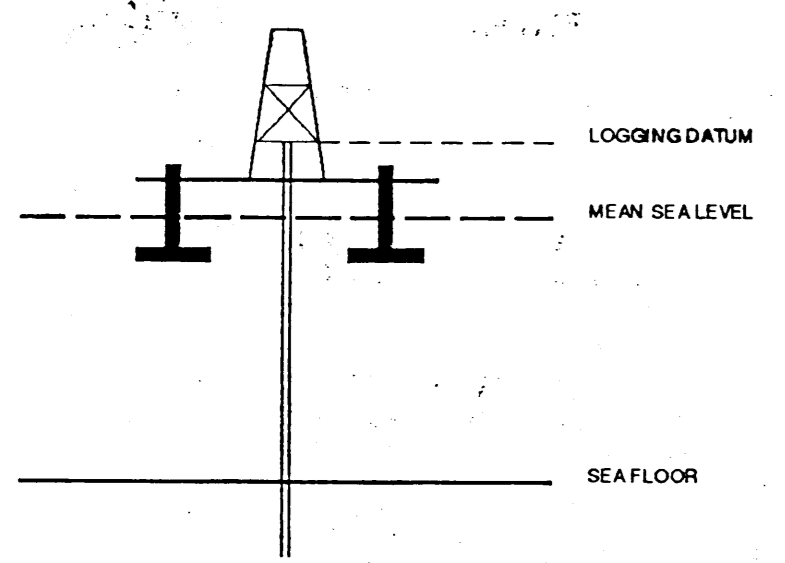
VERTICAL SEISMIC PROFILE

ZERO OFFSET VSP PLOT NO 4

PREDICTIVE DECONVOLUTION

Company: SHELL AUSTRALIA
 Well: DEVL FISH #1
 Field: WILDCAT
 Country: AUSTRALIA
 Reference No: 56578 Interval: 2030.00 to 0.00
 Date Logged: 22-APR-90 Date Processed: 2/5/90
 Location: 38 47'58.21"S 147 55'10.54"E
 Elevations: KB: 28.40 DF: 28.00 GL: -102.00
 Permanent Datum: MSL Depth Units: METRES
 FIELD RECORDING: Engineer: G.SUTHERLAND Location: Program Version: 32.2
 COMPUTATION: Analyst: H.KURAKUCHI Centre: SYJ Baseline: 16.113D

ELEVATION ABOVE MEAN SEA LEVEL
 Logging Datum: 28.40
 Seismic Reference Datum: 0.00



Total Number of Levels: 47
 Depth Reference: SRD
 Time Reference: SRD

Run	Date	Tool Type	Bit Size/Depth	Casing Size/Depth	Top Depth	Bottom Depth
1	22-04-90	WST	8 1/2" 2058 MTR	9 5/8" 1091 MTR	300	2900

VSP Run	Date	Gun Offset	Hydro Offset	Gun Elevation	Hydro Elevation	Gun Azimuth	Hydro Azimuth
1	22-04-90	60.0 M	60.0 M	10 M BELOW MSL	15 M BELOW MSL	200.0	200.0

REMARKS

The well name, location and borehole reference data were furnished by the customer.

CLIENT = SHELL
 FIELD = WILDCAT
 WELL = DEVILFISH

**** DECONVOLUTION ****
 PREDICTIVE DECONVOLUTION
 PROCESSING SEQUENCE:
 MEDIAN COHERENCY STACK APPLIED
 STATIC CORRECTION TO MSL
 BAND PASS FILTER : 5-90 HZ
 NORMALISATION GATE : 100 MS
 TUBEWAVE SUBTRACTED
 5 LEVEL MEDIAN ESTIMATE OF
 DOWNGOING WAVEFIELD
 PREDICTIVE DECONVOLUTION:
 PREDICTION TIME : 2ND ZERO CROSSING
 OPERATOR LENGTH : 1.0 S
 PREWHITENING : 2 %
 POLARITY (S.E.G.) : NORMAL

**** DECONVOLUTION ****
 PREDICTIVE DECONVOLUTION
 RESIDUAL WAVEFIELD
 PROCESSING SEQUENCE:
 MEDIAN COHERENCY STACK APPLIED
 STATIC CORRECTION TO MSL
 BAND PASS FILTER : 5-90 HZ
 NORMALISATION GATE : 100 MS
 DOWNGOING WAVEFIELD SUBTRACTION
 PREDICTIVE DECONVOLUTION:
 PREDICTION TIME : 2ND ZERO CROSSING
 OPERATOR LENGTH : 1.0 S
 PREWHITENING : 2 %
 POLARITY (S.E.G.) : NORMAL

**** DECONVOLUTION ****
 PREDICTIVE DECONVOLUTION
 RESIDUAL WAVEFIELD
 PROCESSING SEQUENCE:
 MEDIAN COHERENCY STACK APPLIED
 STATIC CORRECTION TO MSL
 BAND PASS FILTER : 5-90 HZ
 NORMALISATION GATE : 100 MS
 DOWNGOING WAVEFIELD SUBTRACTION
 PREDICTIVE DECONVOLUTION:
 PREDICTION TIME : 2ND ZERO CROSSING
 OPERATOR LENGTH : 1.0 S
 PREWHITENING : 2 %
 POLARITY (S.E.G.) : NORMAL

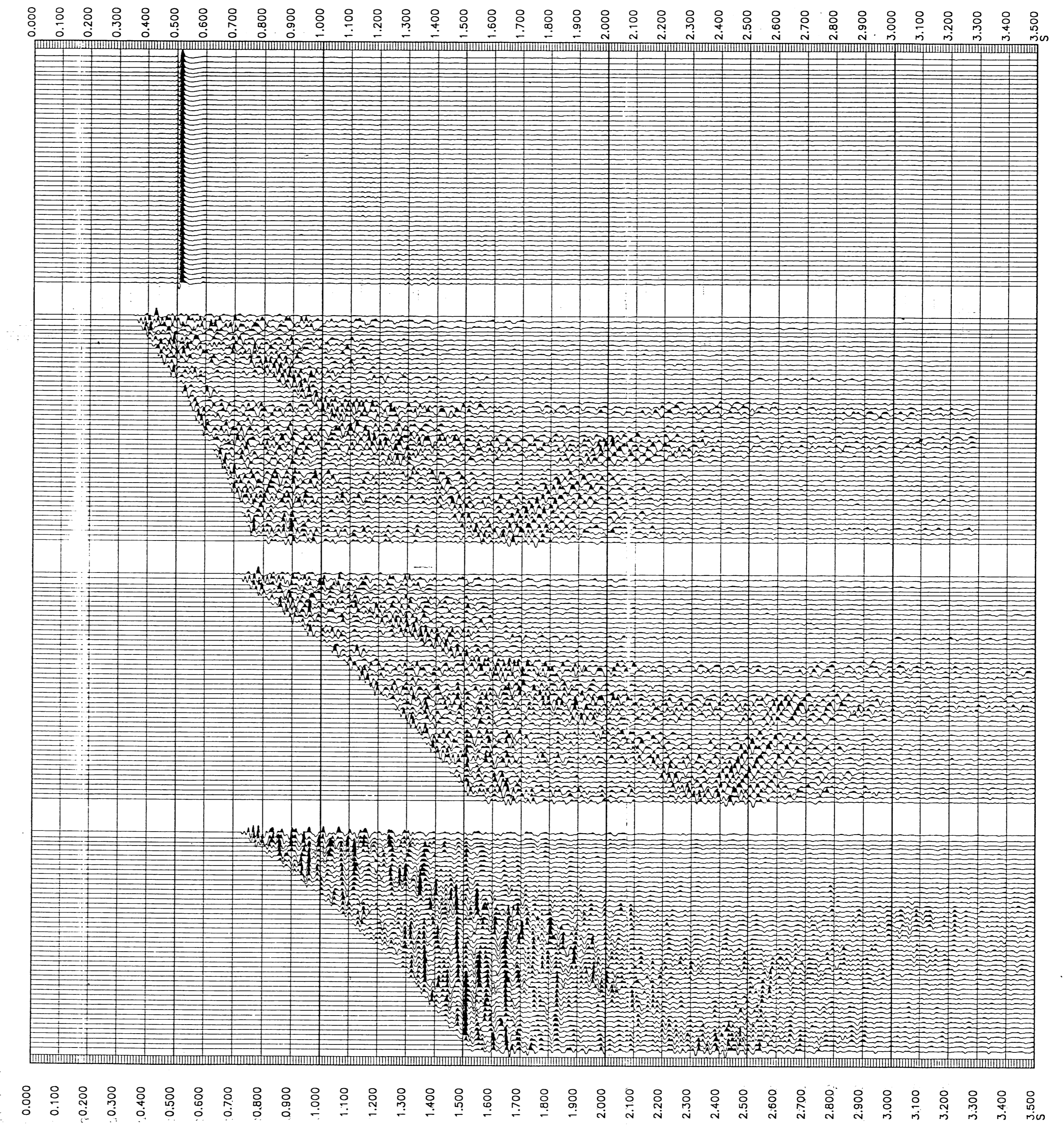
**** DECONVOLUTION ****
 PREDICTIVE DECONVOLUTION
 ENHANCED UPGOING WAVEFIELD
 PROCESSING SEQUENCE:
 MEDIAN COHERENCY STACK APPLIED
 STATIC CORRECTION TO MSL
 BAND PASS FILTER : 5-90 HZ
 NORMALISATION GATE : 100 MS
 DOWNGOING WAVEFIELD SUBTRACTION
 PREDICTIVE DECONVOLUTION:
 PREDICTION TIME : 2ND ZERO CROSSING
 OPERATOR LENGTH : 1.0 S
 PREWHITENING : 2 %
 POLARITY (S.E.G.) : NORMAL

RAW DEPTH M	TRUE VERTICAL DEPTH MSL M	TRANSIT TIME S	LEVEL NO
877.0	848.6	0.364	47
931.0	902.6	0.386	45
975.0	946.6	0.403	43
1025.0	996.6	0.425	41
1075.0	1046.6	0.445	39
1125.0	1096.6	0.467	37
1175.0	1146.6	0.486	35
1225.0	1196.6	0.507	33
1275.0	1246.6	0.527	31
1325.0	1296.6	0.546	29
1375.0	1346.6	0.566	27
1425.0	1396.6	0.585	25
1475.0	1446.6	0.603	23
1525.0	1496.6	0.621	21
1575.0	1546.6	0.639	19
1625.0	1596.6	0.656	17
1675.0	1646.6	0.670	15
1725.0	1696.6	0.684	13
1775.0	1746.6	0.697	11
1825.0	1796.6	0.712	9
1875.0	1846.6	0.726	7
1925.0	1896.6	0.740	5
1975.0	1946.6	0.755	3
2025.0	1996.6	0.769	1

RAW DEPTH M	TRUE VERTICAL DEPTH MSL M	TRANSIT TIME S	LEVEL NO
877.0	848.6	0.364	47
931.0	902.6	0.386	45
975.0	946.6	0.403	43
1025.0	996.6	0.425	41
1075.0	1046.6	0.445	39
1125.0	1096.6	0.467	37
1175.0	1146.6	0.486	35
1225.0	1196.6	0.507	33
1275.0	1246.6	0.527	31
1325.0	1296.6	0.546	29
1375.0	1346.6	0.566	27
1425.0	1396.6	0.585	25
1475.0	1446.6	0.603	23
1525.0	1496.6	0.621	21
1575.0	1546.6	0.639	19
1625.0	1596.6	0.656	17
1675.0	1646.6	0.670	15
1725.0	1696.6	0.684	13
1775.0	1746.6	0.697	11
1825.0	1796.6	0.712	9
1875.0	1846.6	0.726	7
1925.0	1896.6	0.740	5
1975.0	1946.6	0.755	3
2025.0	1996.6	0.769	1

RAW DEPTH M	TRUE VERTICAL DEPTH MSL M	TRANSIT TIME S	LEVEL NO
877.0	848.6	0.364	47
931.0	902.6	0.386	45
975.0	946.6	0.403	43
1025.0	996.6	0.425	41
1075.0	1046.6	0.445	39
1125.0	1096.6	0.467	37
1175.0	1146.6	0.486	35
1225.0	1196.6	0.507	33
1275.0	1246.6	0.527	31
1325.0	1296.6	0.546	29
1375.0	1346.6	0.566	27
1425.0	1396.6	0.585	25
1475.0	1446.6	0.603	23
1525.0	1496.6	0.621	21
1575.0	1546.6	0.639	19
1625.0	1596.6	0.656	17
1675.0	1646.6	0.670	15
1725.0	1696.6	0.684	13
1775.0	1746.6	0.697	11
1825.0	1796.6	0.712	9
1875.0	1846.6	0.726	7
1925.0	1896.6	0.740	5
1975.0	1946.6	0.755	3
2025.0	1996.6	0.769	1

RAW DEPTH M	TRUE VERTICAL DEPTH MSL M	TRANSIT TIME S	LEVEL NO
877.0	848.6	0.364	47
900.0	871.6	0.377	46
950.0	921.6	0.394	44
1000.0	971.6	0.414	42
1050.0	1021.6	0.436	40
1100.0	1071.6	0.457	38
1150.0	1121.6	0.477	36
1200.0	1171.6	0.497	34
1250.0	1221.6	0.519	32
1300.0	1271.6	0.538	30
1350.0	1321.6	0.556	28
1400.0	1371.6	0.576	26
1450.0	1421.6	0.593	24
1500.0	1471.6	0.612	22
1550.0	1521.6	0.630	20
1600.0	1571.6	0.647	18
1650.0	1621.6	0.664	16
1700.0	1671.6	0.679	14
1750.0	1721.6	0.691	12
1800.0	1771.6	0.704	10
1850.0	1821.6	0.719	8
1900.0	1871.6	0.733	6
1950.0	1921.6	0.746	4
2000.0	1971.6	0.761	2



COMPANY SHELL AUSTRALIA
 FIELD WILDCAT
 WELL DEVIL FISH #1
 COUNTRY AUSTRALIA