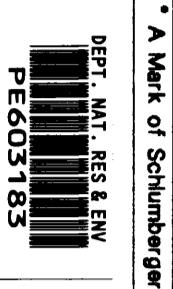


2nd copy ENCL. No 1

GEOGRAM*

(Synthetic Seismogram)



Company: ESSO AUSTRALIA LTD
Well: CONGER #1
Field: WILDCAT
Country: AUSTRALIA
Reference No: 56326
Date Logged: 15-MAR-89
Interval: 297000 to 21000
Date Processed: 10-MAR-89
Location: 038 21 27.21' S 148 03' 48.59' E
Elevations: KB: 2100 DF: 2070 GL: -6500
Permanent Datum: MSL
Depth Units: METRES

LOG INFORMATION

FIELD RECORDS: Engineer: Y. GZHANG Location: Program Version: 30.4
COMPUTATION: Analyst: M. SANDERS Centre: SVU Baseline: 18900X3
ELEVATION ABOVE MEAN SEA LEVEL
Logging Datum: 2100
Sasenic Reference Datum: 0.00
Sonic Calibration By Check Shots: YES Sonic Edited By Analyst: YES
Two-Way Time Sample Interval: 2 ms Environment: onshore

True Vertical Depth Corrections Applied
Source of True Vertical Depth Data:
Maximum Hole Deviation:

Run	Date	Tool Type	Bit Size/ Depth	Casing Size/ Depth	Top Depth	Bottom Depth
VSP	Date	Gun	Hydro Offset	Gun Offset	Hydro Elevation	Gun Azimuth
1	15-MAR-89	40 M	40 M	9 M BELOW MSL	14 M BELOW MSL	Hydro Azimuth

GEOGRAM MODEL ASSUMPTIONS

Equal time slice model of horizontal plane layers.
Plane acoustic waves at normal incidence.
No intrinsic attenuation.
POLARITY
An ongoing wave, reflected by an increase in acoustic impedance with depth, is displayed as a white trough under normal polarity.
SIGNATURES
All signatures displayed in the Geogram result correspond to a wavelet convolved with a reflection coefficient of -0.5 (A decrease in acoustic impedance with depth).

REMARKS

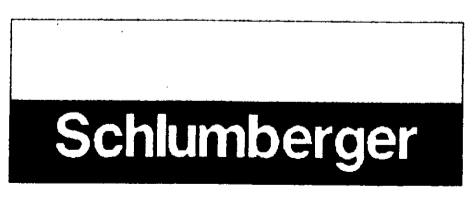
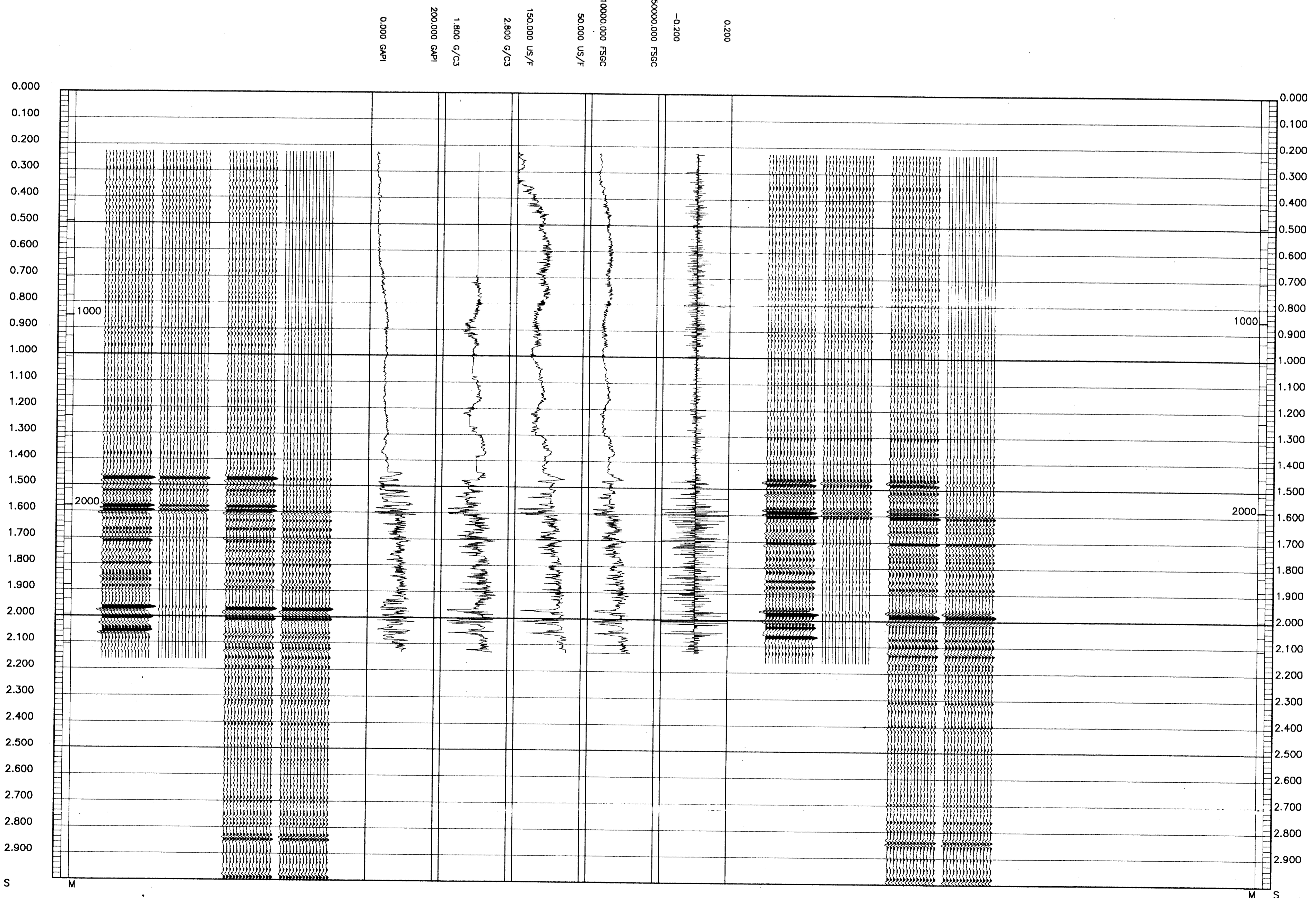
35 Hertz Zero Phase

The well name, location and borehole reference data were furnished by the customer.

All interpretations are opinions based on inferences from electrical or other measurements and we cannot, and do not guarantee the accuracy or correctness of any interpretations, and we shall not, except in the case of gross or willful negligence on our part, be liable or responsible for any loss, costs, damages or expenses incurred or sustained by anyone resulting from any interpretations made by any of our officers, agents or employees. These interpretations are also subject to Clause 4 of our General Terms and Conditions as set out in our current Price Schedule.

** GEOGRAM **
35 HERTZ ZERO PHASE
RICKER WAVELET
CONGER - 1

MULTIPLES ONLY REVERSE POLARITY
PRIMARIES AND MULTIPLES REVERSE POLARITY
PRIMARIES WITH TRANSMISSION LOSS REVERSE POLARITY
PRIMARIES REVERSE POLARITY
REFLECTION
ACOUSTIC IMPEDANCE
SONIC
DENSITY
GAMMA RAY
MULTIPLES ONLY NORMAL POLARITY
PRIMARIES AND MULTIPLES NORMAL POLARITY
PRIMARIES WITH TRANSMISSION LOSS NORMAL POLARITY
PRIMARIES NORMAL POLARITY



COMPANY ESSO AUSTRALIA LTD
FIELD WILDCAT
WELL CONGER #1
COUNTRY AUSTRALIA