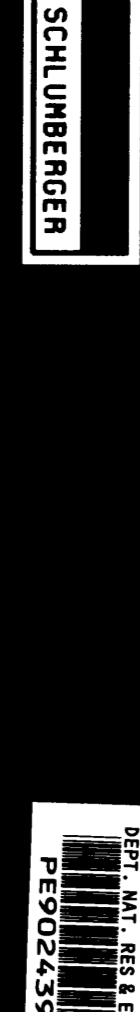


AUSTRALIAN LOG INTERPRETATION CENTRE

RAW SHOTS

DEFLECTED WELL - VELOCITY CHECK SHOT SURVEY



COMPANY ESSO AUSTRALIA LTD
WELL BARRACOUTA #5
FIELD WILDCAT
COUNTRY AUSTRALIA

LOCATION COORDINATES:
LATITUDE 038 18 03.53 S
LONGITUDE 147 39 36.04 E
ELEVATIONS:
KB 21.0 M
DF 20.7 M
GL -45.5 M

COMPUTER CENTER ASJ
ANALYST R. BUNT
JOB REFERENCE S40242
DATE 21-MAR-85

SEISMIC REFERENCE DATUM NSL

UNITS METRES
FRESHENUP DEPTH NSL
LOS MEASURED FROM DF
DRILLING MEASURED FROM DF
VELOCITY LOG DEPTH REFERRED TO NSL
DATES OF CHECK SHOTS NONE
CHECK SHOTS NONE
WELL TOTAL DEPTH 1775 M
TOTAL NUMBER OF CHECK LEVELS 2
WELL DEVIATION 38 DEG

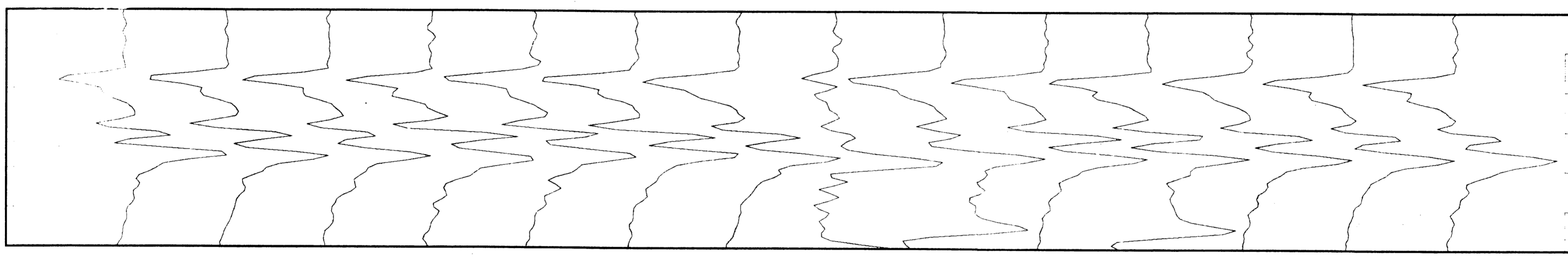
SONIC RUN DATE LOGGED GUN ELEVATION RECEL. ELEVATION
NONE N/A -10 M -10 M
B11 SYNCHROPH. CROSS SYNCHROPH. GUN OFFSET RECEL. OFFSET
15.25/17.70 M 15.25/17.70 M 0.00/0.00 0.00/0.00
SOUND TYPE MFC-B

CLIENT : ESSO AUSTRALIA LTD.
FIELD : WILDCAT
WELL : BARRACOUTA #5
D1.WSS

PLOT #1
ESSO AUSTRALIA LTD.
BARRACOUTA #5
OFFSET CHECKSHOT SURVEY
RAW DATA
SURFACE SENSOR

DEPT D-TIME

1	13	Y	1429.1	0.015	3280.00
1	14	Y	1429.1	0.015	2719.00
1	15	Y	1429.1	0.015	2782.00
1	16	Y	1429.1	0.015	2616.00
1	17	Y	1429.1	0.014	2873.00
1	19	Y	1429.1	0.015	2874.00
2	24	Y	1203.0	0.015	2776.00
2	25	Y	1203.0	0.014	5295.00
2	26	Y	1203.0	0.014	2787.00
2	27	Y	1203.0	0.015	2908.00
2	28	Y	1203.0	0.015	2501.00
2	29	Y	1203.0	0.015	2883.00
2	30	Y	1203.0	0.015	2944.00
2	31	Y	1203.0	0.015	2836.00



CLIENT : ESSO AUSTRALIA LTD.
FIELD : WILDCAT
WELL : BARRACOUTA #5
D1.WSS

PLOT #2
ESSO AUSTRALIA LTD.
BARRACOUTA #5
OFFSET CHECK SHOT SURVEY
RAW DATA
DOWNHOLE SENSOR

DEPT D-TIME

1	13	Y	1429.1	0.514	1374.00
1	14	Y	1429.1	0.516	12832.00
1	15	Y	1429.1	0.516	12900.00
1	16	Y	1429.1	0.516	12768.00
1	17	Y	1429.1	0.515	12450.00
1	19	Y	1429.1	0.516	12420.00
2	24	Y	1203.0	0.448	9452.00
2	25	Y	1203.0	0.449	10128.00
2	26	Y	1203.0	0.448	9980.00
2	27	Y	1203.0	0.449	9780.00
2	28	Y	1203.0	0.448	9558.00
2	29	Y	1203.0	0.450	9746.00
2	30	Y	1203.0	0.448	9656.00
2	31	Y	1203.0	0.448	9644.00

