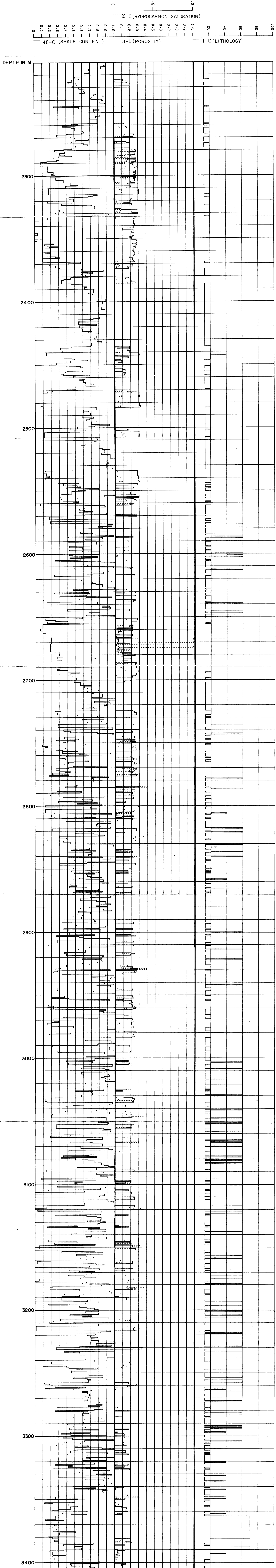


BASKER SOUTH-1 PETROPHYSICAL EVALUATION



LITHOLOGY LEGEND

- 13 Shale
- 20 Sand
- 40 Dolomitic Sandstone
- 60 Coal
- 70 Volcanics

Basker/South-1. W.C.R. SDA 582

SHELL-AUSTRALIA E.&P. OIL AND GAS. GIPPSLAND BASIN	BASKER SOUTH-1 PETROPHYSICAL EVALUATION	
	DEPT. NAT. RES. & ENV. PEG01243	Author: EPE/2 Report No.: SDA 582